

New Mexico Riparian Habitat Map

NMRipMap

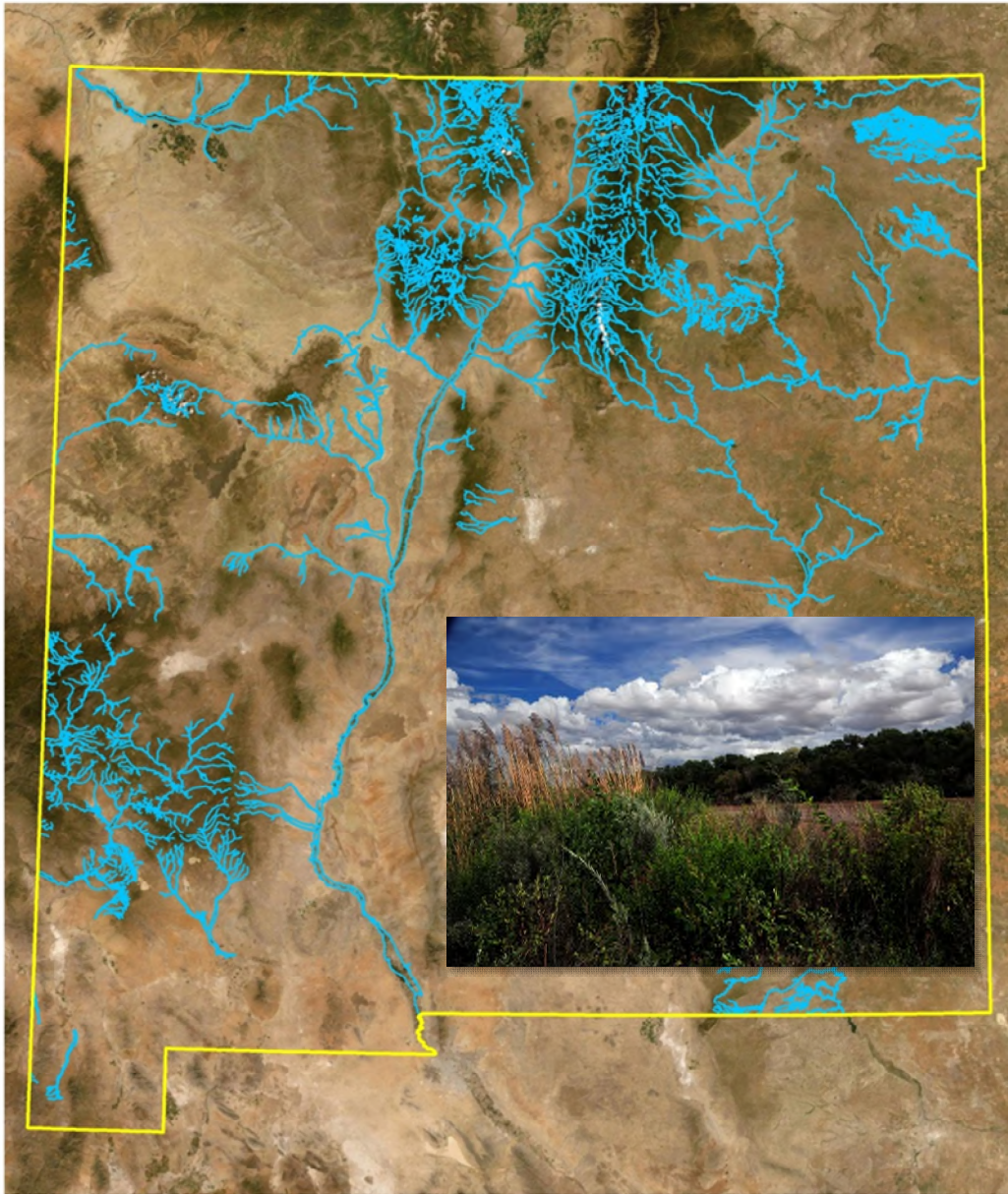
A public map resource to support
conservation and restoration
in the Middle Rio Grande, New Mexico.

Esteban H. Muldavin, Elizabeth R. Milford, Corrie Gonzalez
Natural Heritage New Mexico, University of New Mexico,
Albuquerque, NM

And

Matt Wunder

New Mexico Department of Game and Fish, Santa Fe, NM

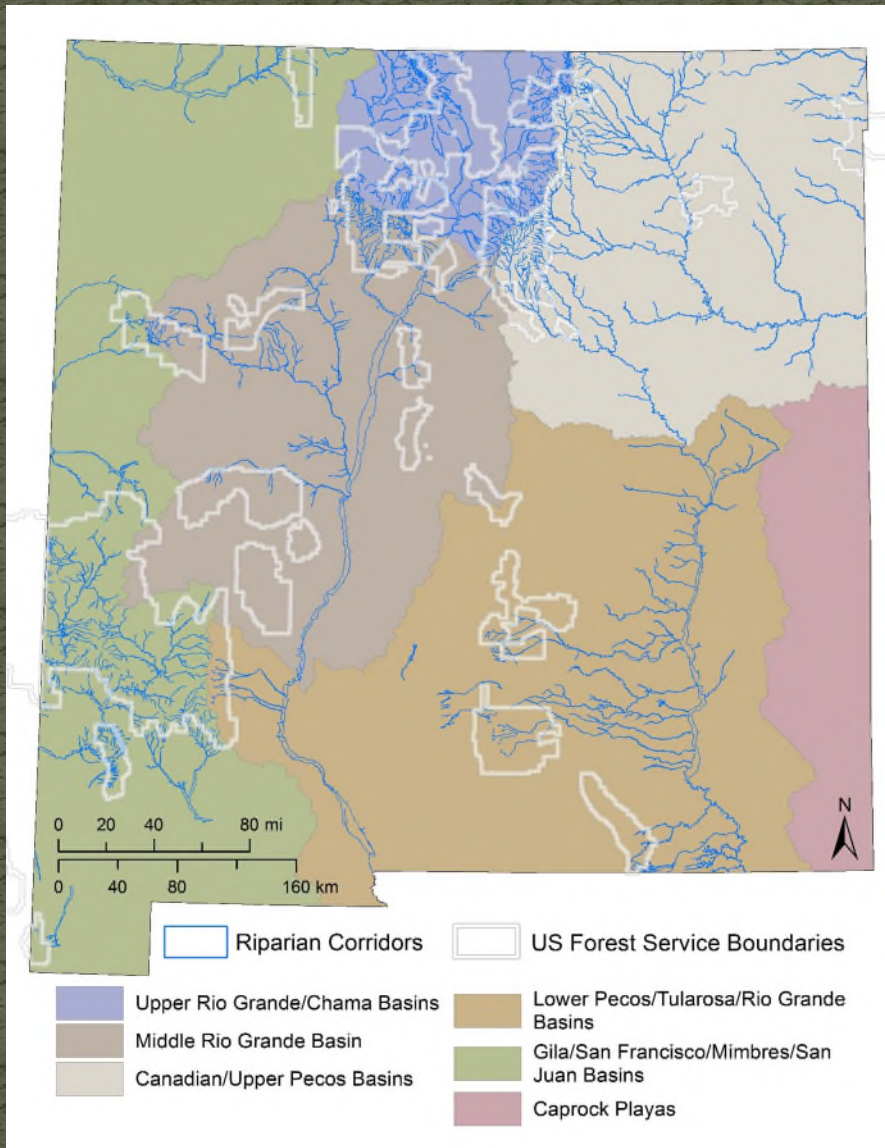


New Mexico Riparian Habitat Map

NMRipMap

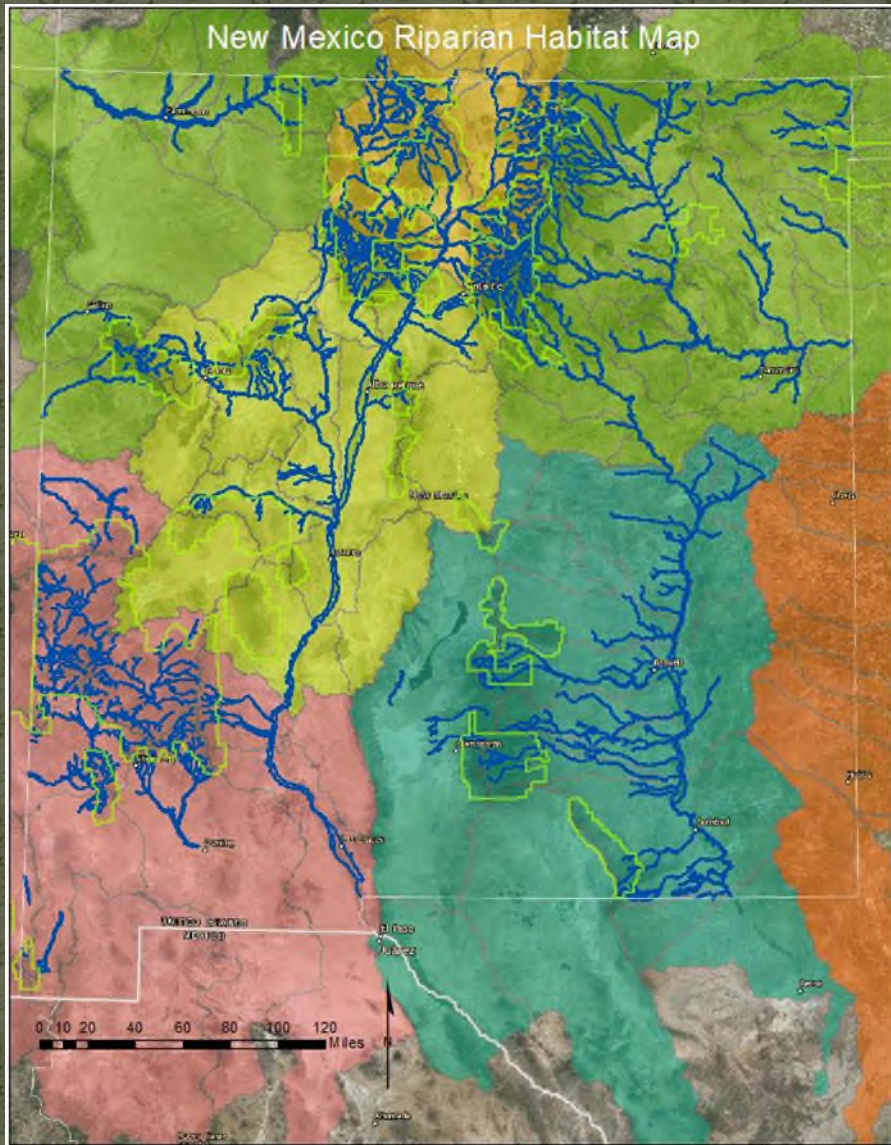
State-wide collaborative mapping project (2017-2023)

- **New Mexico Game and Fish (NMDGF)**
 - Virginia Seamster
- **United State Forest Service (USFS)**
 - Jack Triepke (Regional Ecologist, Reg. 3)
 - Adam Clark, Geospatial Technology Applications Center (GTAC)
- **Natural Heritage New Mexico (NHNM)**
 - Amy Urbanovsky, Amanda Kennedy, Grace MaCartha, Yvonne Chauvin, Sarah Cherne, and Kyle Gonterman
- **Missouri Resource Assessment Partnership (MoRAP)**
 - Dave Diamond, Lee Elliot, and Phillip A. Hanberry



<https://nhnm.unm.edu/riparian/nmripmap>





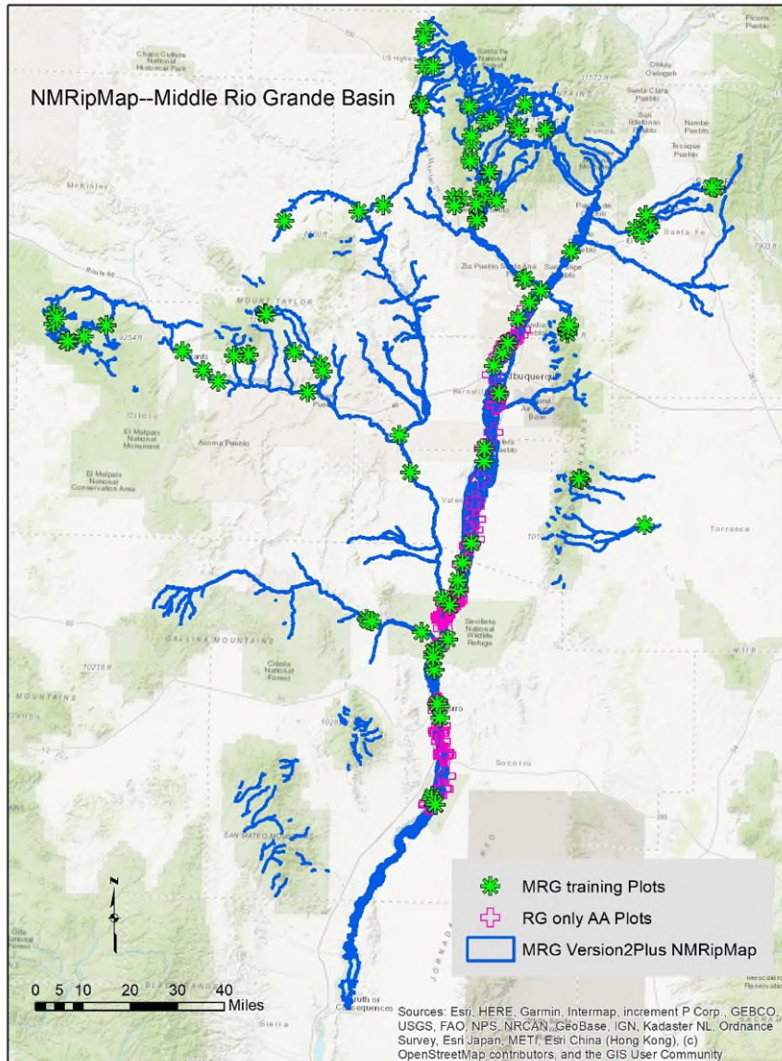
New Mexico Riparian Habitat Map (NMRipMap)

- Statewide, comprehensive, wall-to-wall map inside the riparian corridor
- Vegetation composition, cover, and structure of along New Mexico's perennial streams and rivers
- Fine-scale (1:6,000) 0.1 ha (2.5 ac) to be evaluate habitat at a stand level relevant to wildlife and understanding ecosystem patterns as a whole.

<https://nhnm.unm.edu/riparian/nmripmap>



NMRipMap Production Middle Rio Grande



- Developed 2016 NAIP aerial imagery and 2016 LiDAR
- Used eCognition and RandomForest classification followed by heads-up editing for quality control
- Used 132 field plots for training
- 102 validation plots along the Rio
- Three-tiered hierarchical legend linked to the US National Vegetation Classification
 - Cowardin 1979 upper levels (NWI); macrogroups groups, alliances and plant associations at lower levels (NPS)
 - 48 Level 3 units state wide, 30 in the MRG

Forests and Woodlands

| | | | |
|---|---------------------|--|--|
| I | FOREST and WOODLAND | | |
| | IB | Lowland Riparian Forest and Woodlands | |
| | | IB1 | Lowland Native Deciduous Riparian Forest |
| | | IB3 | Lowland Native-Introduced Russian Olive Deciduous Riparian Forest |
| | | IB4 | Lowland Native-Introduced Tamarisk Deciduous Riparian Forest |
| | | IB5 | Lowland Native-Introduced Russian Olive - Tamarisk Deciduous Riparian Forest |
| | | IB6 | Lowland Native Evergreen Dry Riparian Forest |
| | | IB7 | Lowland Native Evergreen-Deciduous Riparian Forest |
| | IC | Lowland Introduced Riparian Woodland and Scrub | |
| | | IC1 | Russian Olive Introduced Riparian Woodland and Scrub |
| | | IC2 | Tamarisk Introduced Riparian Woodland and Scrub |
| | | IC3 | Russian Olive-Tamarisk Introduced Riparian Woodland and Scrub |
| | | IC4 | Mixed Introduced Forest and Scrub |
| | IE | Semi-Natural Riparian Woodland and Scrub | |
| | | IE1 | Semi-Natural Riparian Forest and Scrub |

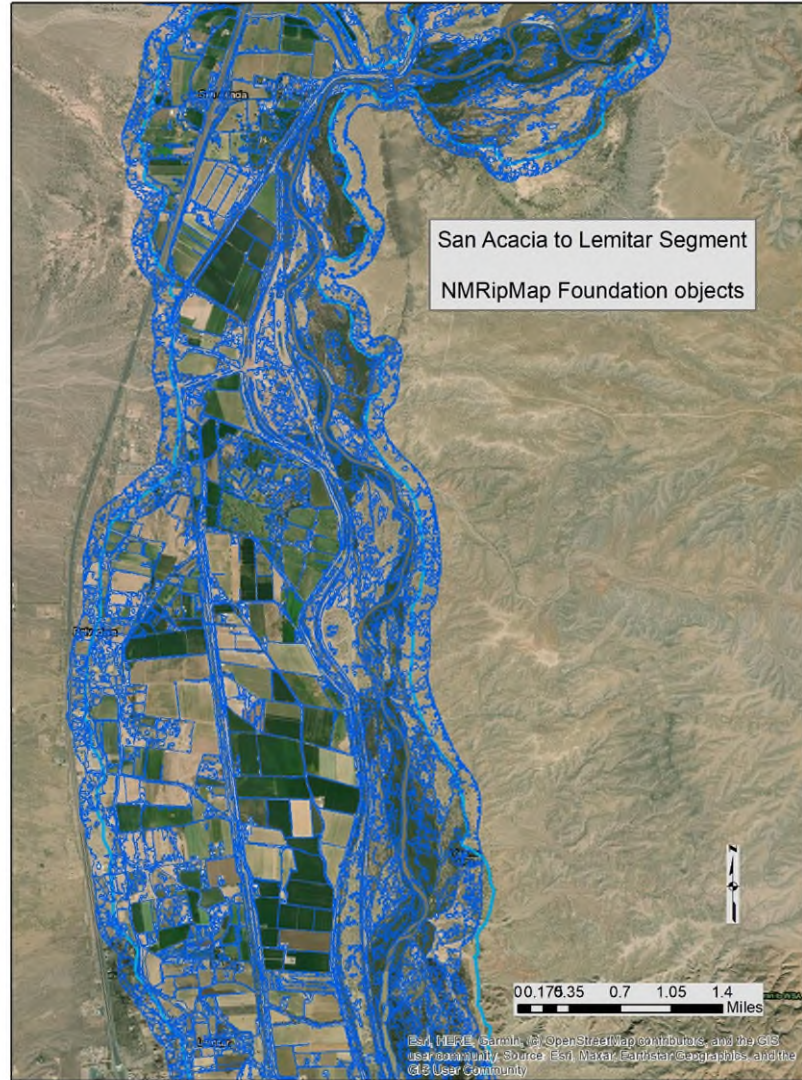
Shrublands and Herbaceous Vegetation

| | | | |
|-----|-----------------------|------------------------------------|--|
| II | SHRUBLAND | | |
| | IIB | Lowland Riparian Shrubland | |
| | | IIB1 | Lowland Wet Riparian Shrubland |
| | | IIB2 | Lowland Dry Riparian Shrubland |
| | | IIB3 | Desert Alkaline-Saline Wet Shrubland |
| | | IIB4 | Lowland Native-Introduced Russian Olive Riparian Scrub |
| | | IIB5 | Lowland Native-Introduced Tamarisk Riparian Scrub |
| | | IIB6 | Lowland Native-Introduced Russian Olive-Tamarisk Riparian Woodland and Scrub |
| III | HERBACEOUS VEGETATION | | |
| | IIIB | Lowland Marshes and Wet Meadows | |
| | | IIIB1 | Western Lowland Marsh |
| | | IIIB3 | Arid West Lowland Wet Meadow |
| | IIID | Lowland Dry Meadow and Grassland | |
| | | IIID1 | Western Lowland Salt Meadow and Dry Grassland |
| | IIIE | Semi-natural Herbaceous Vegetation | |
| | | IIIE1 | Ruderal Forb Meadow |
| | | IIIE2 | Pasture Wetlands |

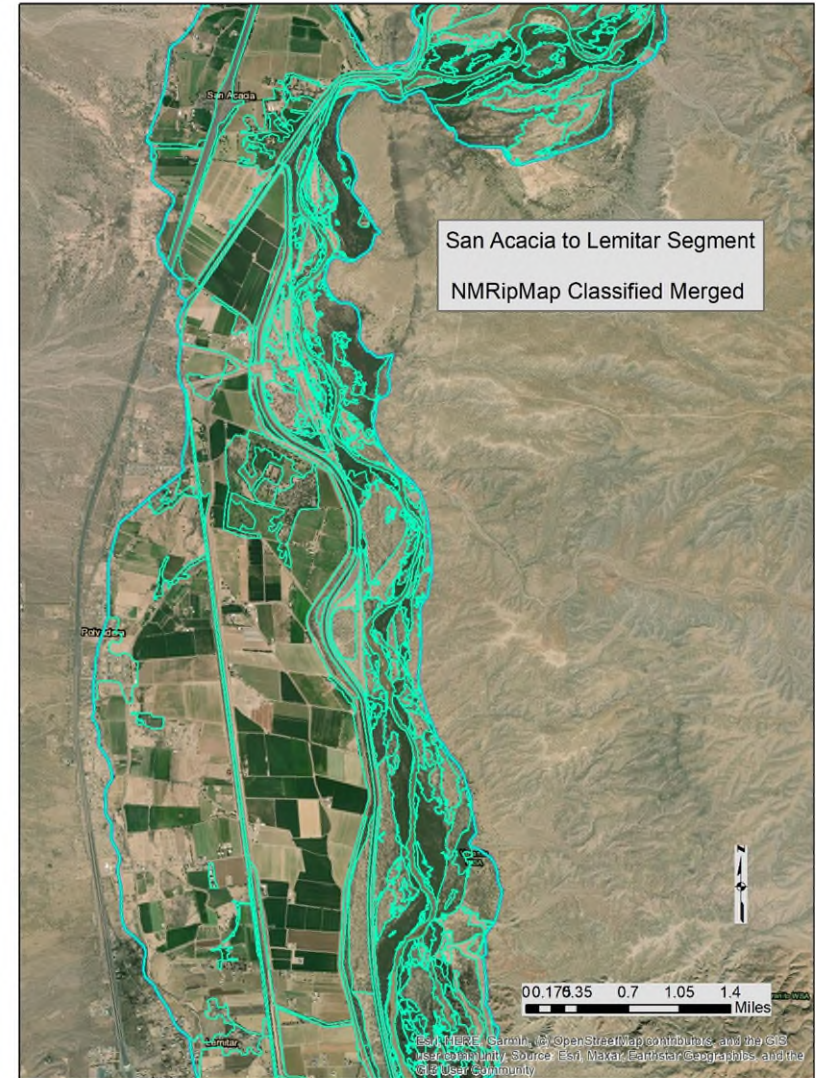
Miscellaneous Land Cover types

| IV | MISCELLANEOUS LAND TYPES | | |
|----|--------------------------|----------------------|---|
| | IVA | Bare Unvegetated | |
| | | IVA1 | Riparian Bare Ground/Rockland [non-channel] |
| | IVB | Water/Channel | |
| | | IVB1 | Open Channel Riverwash/Water/Unvegetated bars |
| | IVC | Shadow | |
| | | IVC1 | Shadow |
| | IVD | Agriculture | |
| | | IVD1 | Agriculture - cultivated crops |
| | | IVD2 | Agriculture - Hay/Pasture |
| | IVE | Urban/Built-Up Areas | |
| | | IVE1 | Development/Disturbed ground |
| | IVF | Roads | |
| | | IVF1 | Roads |
| | IVG | Upland Unvegetated | |
| | | IVG1 | Upland Bare Ground/Rockland |

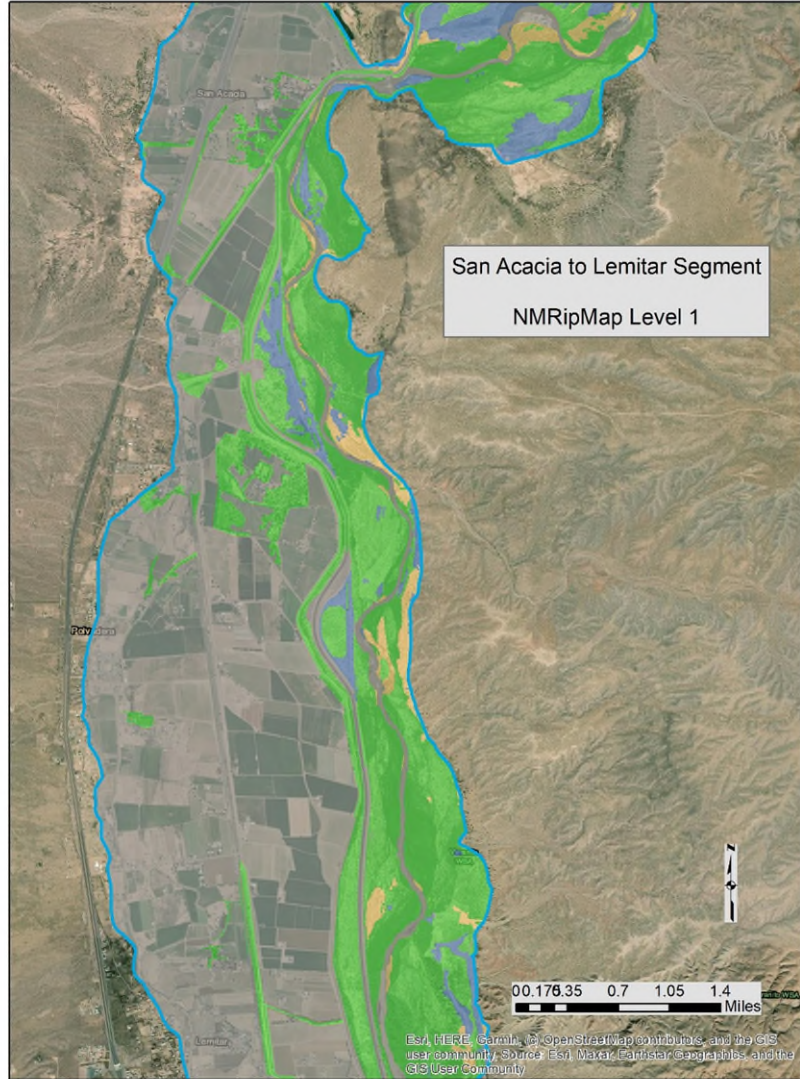
eCognition object polygons



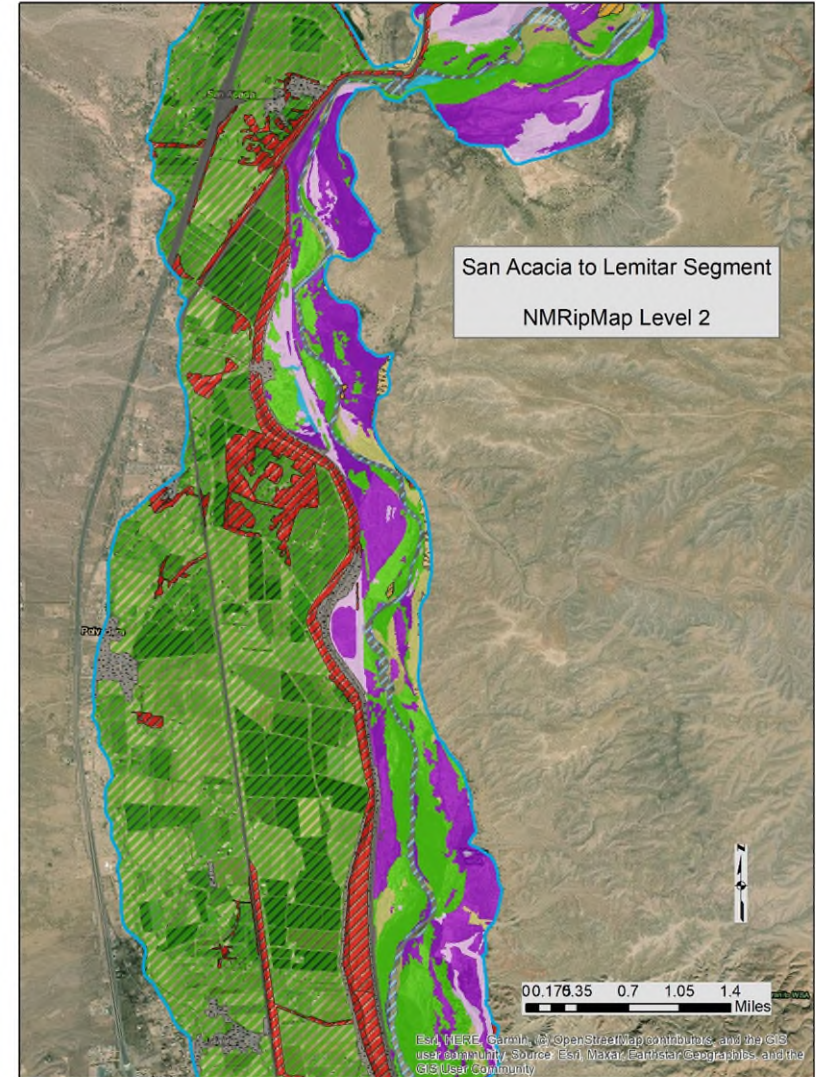
RF classified, merged, edited



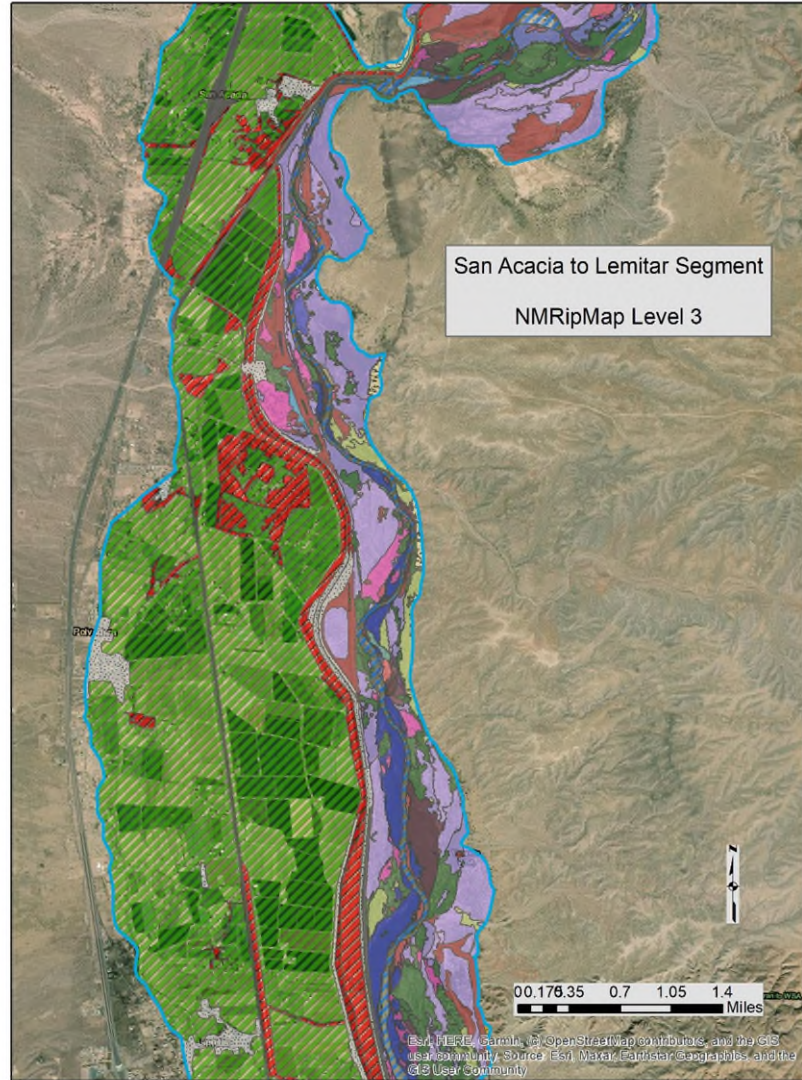
NMRipMap Level 1



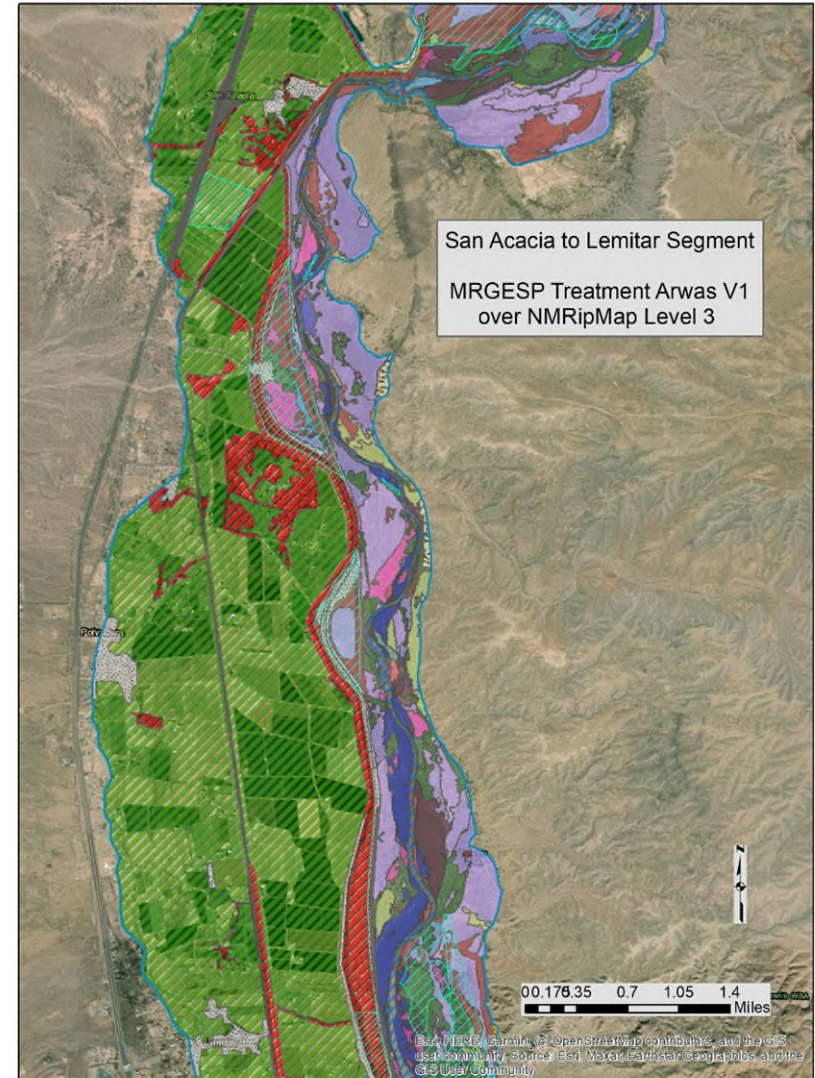
NMRipMap Level 2



NMRipMap Level 3



NMRipMap Level 3 Treatments



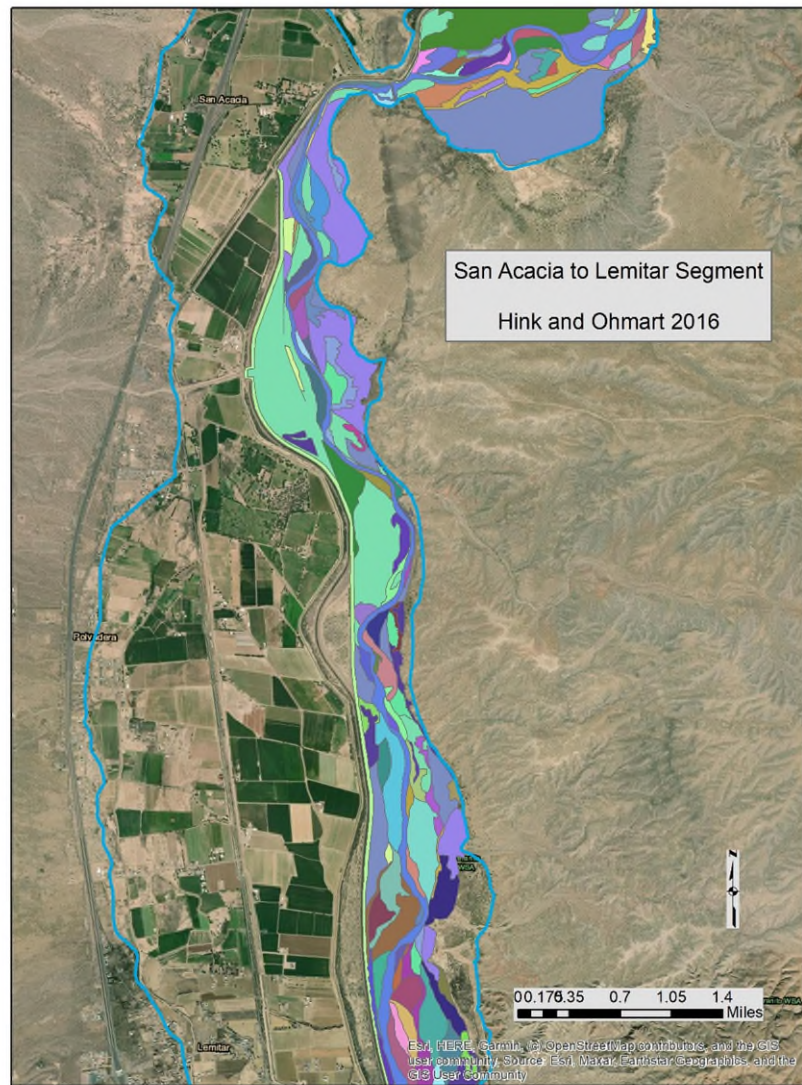
NMRipMap Attributes



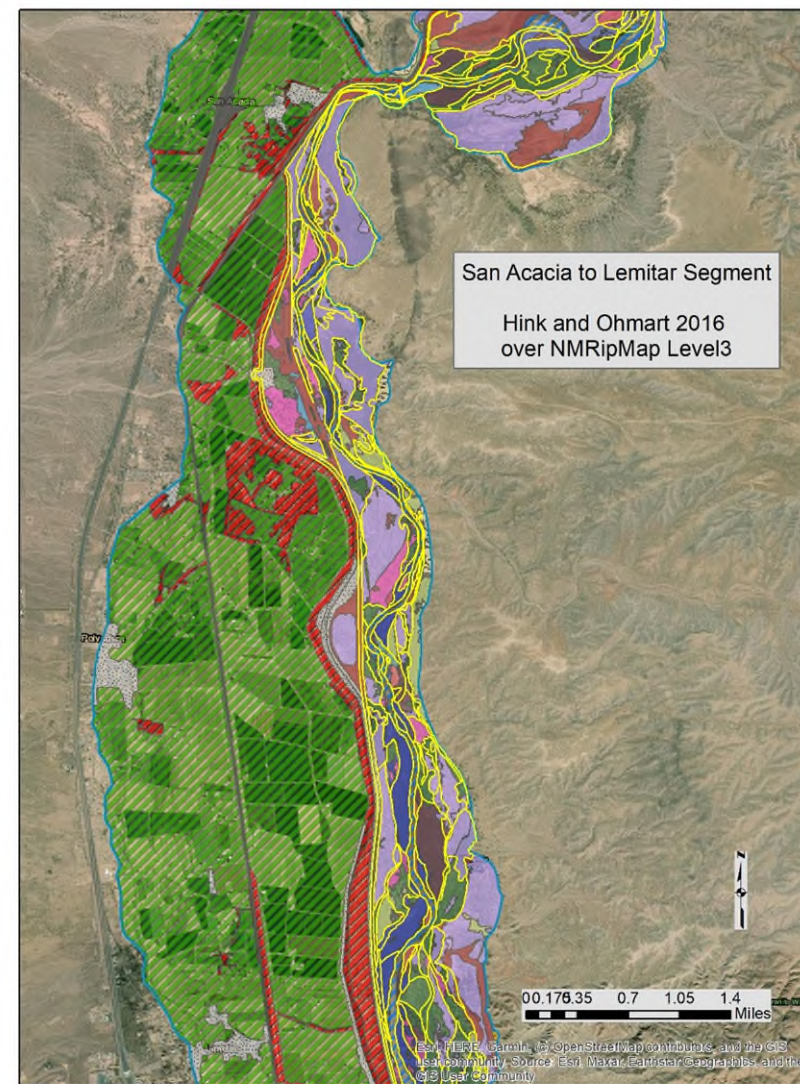
27 Attributes

- Legend levels and names, modifiers (18)
- US National Vegetation Classification x-walk to MacroGroup, Group, and Alliance levels
- Cover
 - Tree > 16- 40 ft (5- 12 m), >40 ft (>12 m)
 - H&O 20-40 ft and >40ft
 - Tall Shrubs 10-16 ft (3-5 m)
 - H&O 0-15 ft
 - Short Shrub 3-10 ft (1-3 m)
 - Dwarf Shrubs 1.5-3 ft (0.5-1 m)
 - Herbaceous <0.5 (<1.5 ft)
 - H&O 0-5 ft

Hink and Ohmart 2016

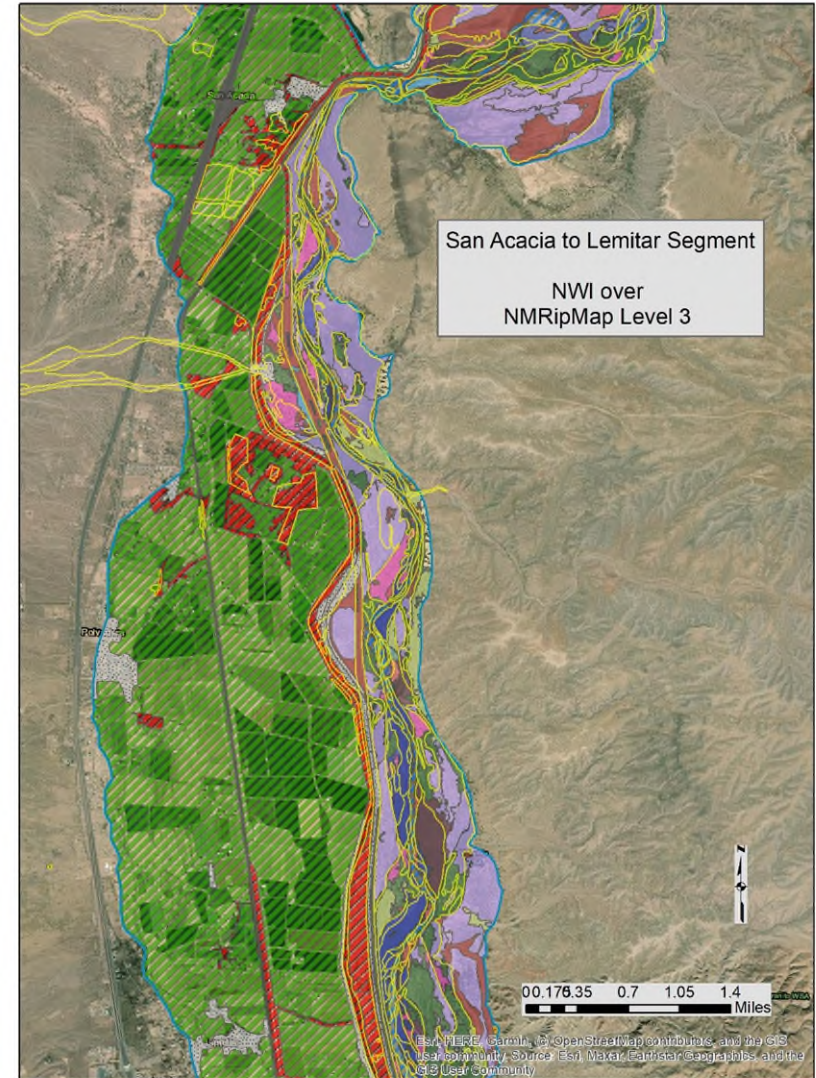
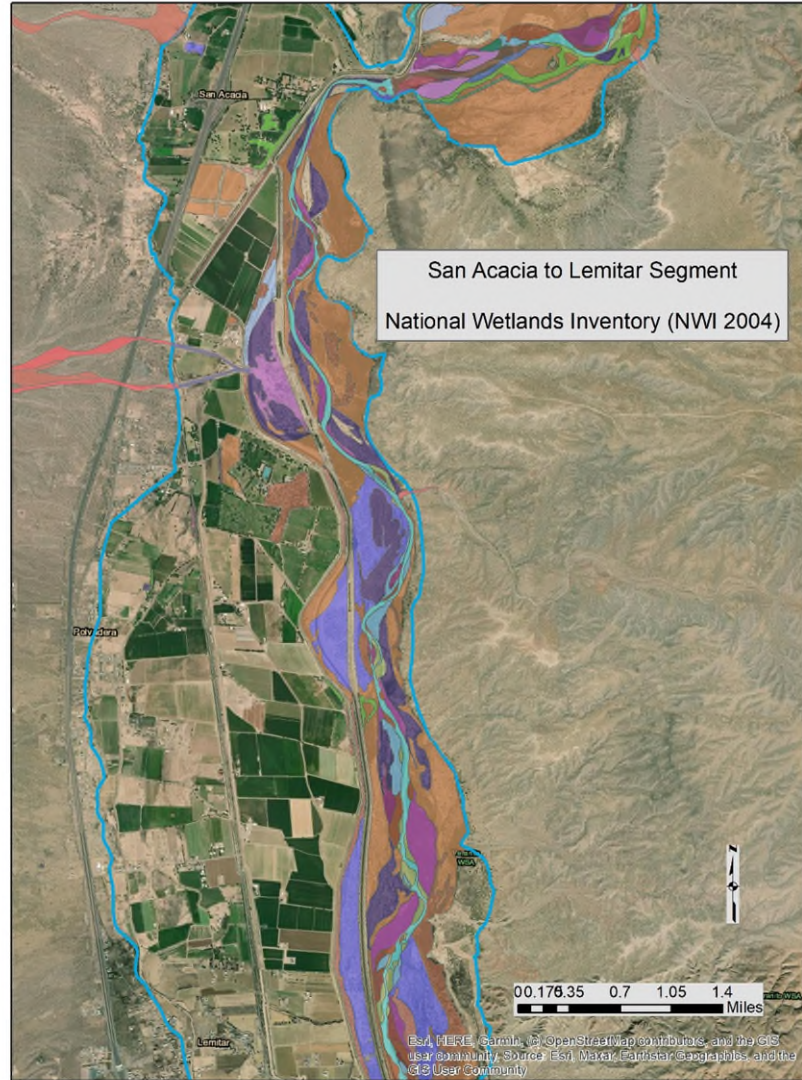


H&O over NMRipMap Level 3



National Wetlands Inventory 2004

NMRipMap Level 3 over NWI



NMRipMap Applications

A report card for the **Upper Rio Grande Basin**



Riparian Conservation Opportunity Areas *A Toolkit for Riparian Conservation and Restoration* in the *Upper Rio Grande* Version 2.0



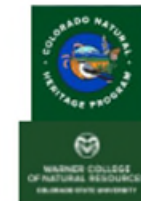
Upper Rio Grande Riparian Ecological Assessment



Middle Rio Grande Conservation Action Plan



Framework and Status Assessment



Version 1.2
October, 2019



[HOME](#)

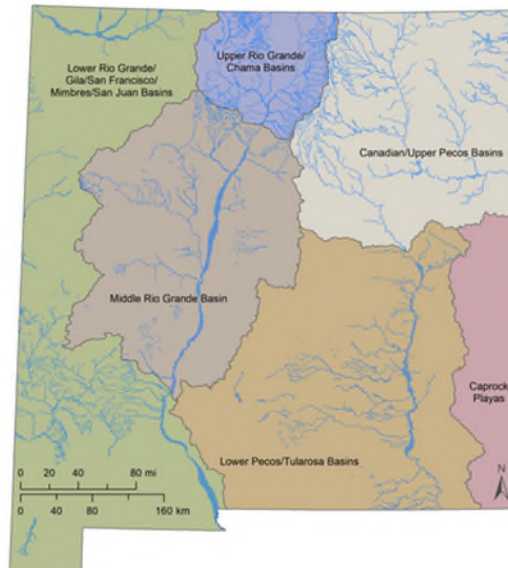
New Mexico Riparian Habitat Map

Version 2.0 Plus is available!

The New Mexico Riparian Habitat Map (NMRipMap) Version 2.0 Plus is a comprehensive, fine-scale spatial view of the composition, cover, and structure of riparian and wetland vegetation along New Mexico's perennial streams and rivers (see [User's Guide](#) for details).

NMRipMap is designed to serve wildlife habitat management, wetland and riparian conservation and restoration planning, non-native species management, riparian monitoring design, identification of refugia, and more.

Project Areas



Explore the Map



NMRipMap Agency Sponsors



NMRipmap Products and Data

- [User Guide](#)
- [Legend](#)
- [Annotated Legend](#)
- [Attribute List](#)
- [NVC Alliance Look-up](#)

NMRipmap Map Downloads

- Canadian Upper Pecos Version 2.0 Plus [geodb](#) WFS
- Gila Region San Juan Version 2.0 Plus North [geodb](#) WFS
- Gila Region San Juan Version 2.0 Plus South [geodb](#) WFS
- Lower Pecos Version 2.0 Plus [geodb](#) WFS
- Middle Rio Grande Version