

Middle Rio Grande Endangered Species Collaborative Program's

Science & Adaptive Management Tool : Interactive Mapper



Shay Howlin, WEST Inc.

3 December 2020

Program Support Team presentation for 2020 Science Symposium

MRGESCP Website - Resources

[Events](#)[About ▾](#)[Resources ▾](#)[Science Symposiums ▾](#)[Contact Us](#)[Login](#)

Check Out the FY19 Annual Report

The MRGESCP FY19 Annual Report has been released! The report gives you a quick overview of the Program and lets you know what Program-related activities took place in 2019.

[Check It Out](#)

Sign Up for the 2020 Science Symposium

The 2020 MRGESCP Science Symposium is scheduled for December 1-3, 2020. Click the link to register for the event! Find more information under the Science Symposiums tab above.

[Register](#)

MIDDLE RIO GRANDE ENDANGERED SPECIES COLLABORATIVE PROGRAM

The Middle Rio Grande Endangered Species Collaborative Program (MRGESCP or Program) is a partnership of 17 federal, state, tribal, local, and non-profit signatory agencies and organizations

MRGESCP Website – Program Portal



[Home](#) [Events](#) [About](#) [Resources](#) [Science Symposiums](#) [Contact Us](#) [Login](#)

Check Out the FY19 Annual Report

The MRGESCP FY19 Annual Report has been released! The report gives you a quick overview of the Program and lets you know what Program-related activities took place in 2019.

[Check It Out](#)

Sign Up for the

The 2020 MRGESCP Science Symposium 2020. Click the link to register for the Science Symposiums tab

MIDDLE RIO GRANDE ENDANGERED SPECIES PROGRAM

The Middle Rio Grande Endangered Species Collaborative Program (MRGESCP) is a partnership of 17 federal, state, tribal, local, and non-profit signatory agencies and organizations

[Documents](#)

[Data](#)

[Interactive Map](#)

DATA SETS

[Habitat Restoration \(RioRestore\)](#)

[Rio Grande Silvery Minnow Monitoring](#)

[RGSM Rescue](#)

[RiverEyes](#)

[River Miles](#)

[River Reaches](#)

[Vegetation](#)

HYDROLOGY

[New Mexico Drought Monitor](#)

[3 Month Outlook](#)

[River Basin Storage](#)

[SNOTEL Interactive Map](#)

MRGESCP Website – Program Portal

- ❑ Funded by U.S. Army Corps of Engineers

Lynette Giesen

- ❑ Developed by USGS

- ❑ Coordinated by Many



MRGESCP Website – Program Portal

- ❑ Funded by U.S. Army Corps of Engineers
- ❑ Developed by USGS
Toby Welborn Florence Thompson
Shannon Watermolen Chad Fanguy
- ❑ Coordinated by Many



MRGESCP Website – Program Portal

- ❑ Funded by U.S. Army Corps of Engineers
- ❑ Developed by USGS
- ❑ Coordinated by Many

Micky Porter

Program Support Team



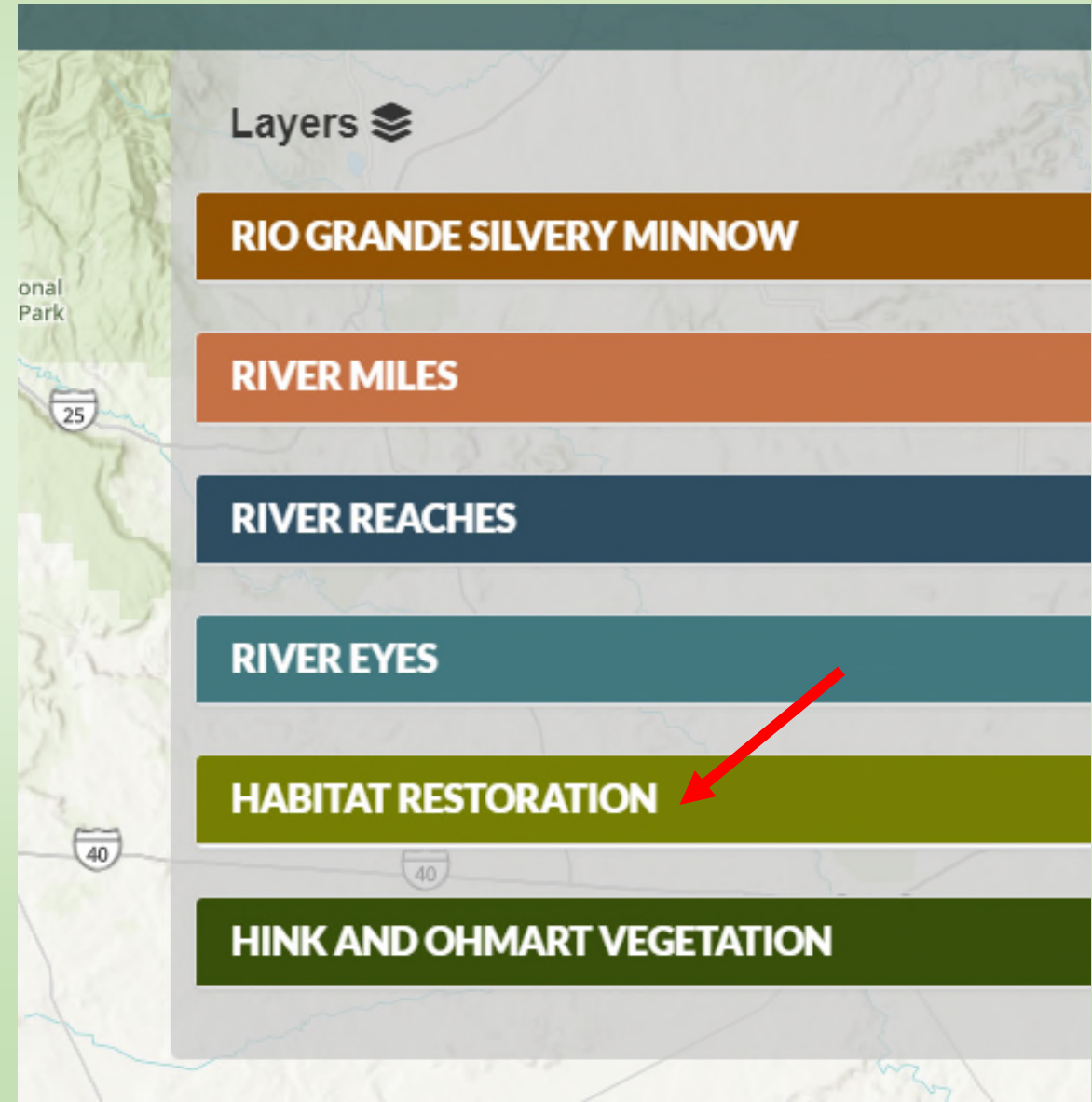
Program Portal Newest Feature: Interactive Map

- ☐ Visual Demonstration
- ☐ Recent/Updated Information
- ☐ All data available as downloads for use in desktop GIS

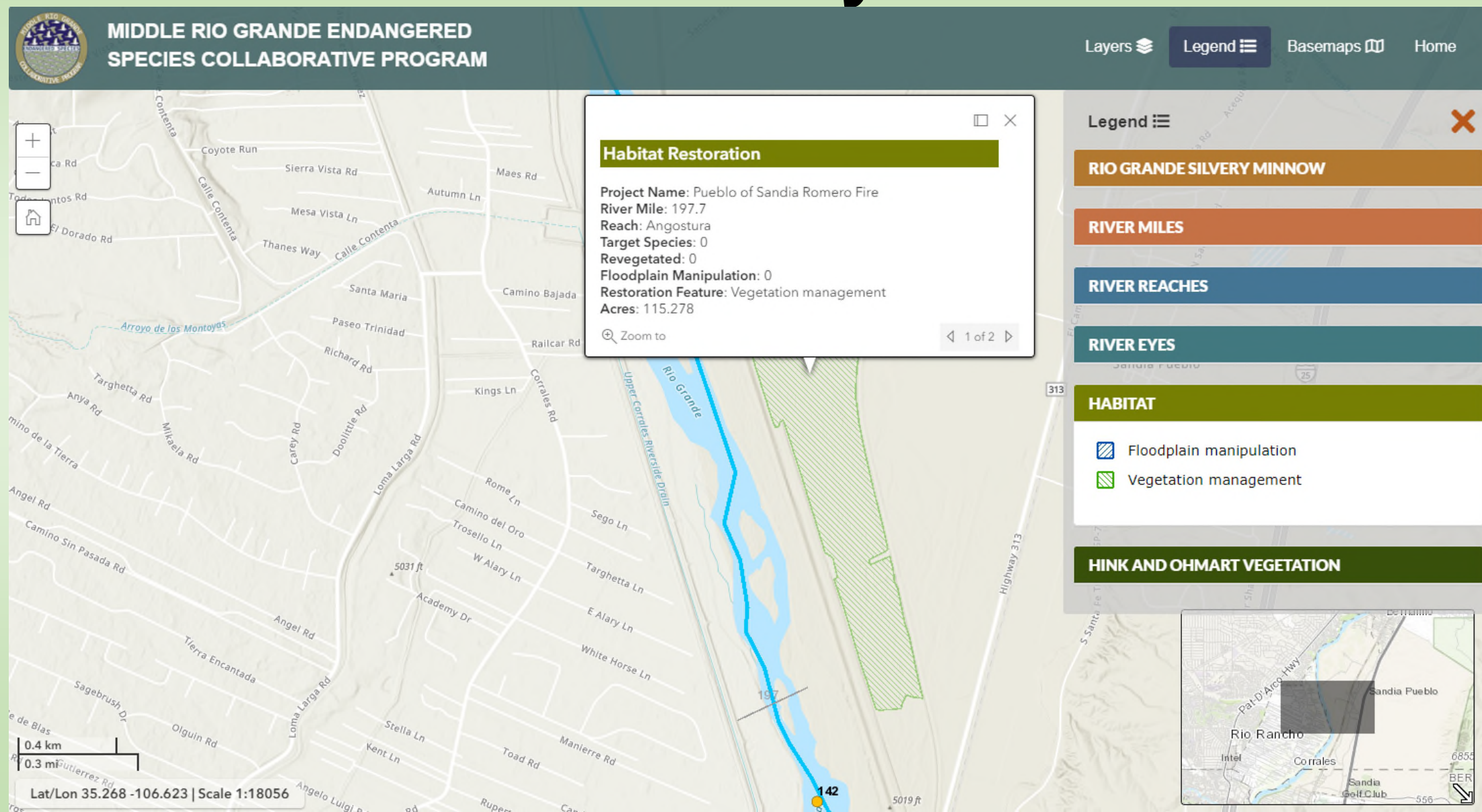


Program Portal Newest Feature: Interactive Map

- ☐ Visual Demonstration
- ☐ Recent/Updated Information
- ☐ All data available as downloads for use in desktop GIS



Habitat Restoration Layer



[Events](#)[About ▾](#)[Resources ▾](#)[Science Symposiums ▾](#)[Contact Us](#)[Login](#)

Habitat Restoration (RioRestore)

The New Mexico Interstate Stream Commission (NMISC) contracted GeoSystems Analysis (GSA) to create a new comprehensive MRG habitat restoration geo-database (named RioRestore) that consolidates information from prior geo-spatial datasets, develops a standard nomenclature and attribution structure (e.g. data dictionary) for describing specific implementation activities and goals.

Data Contact

Chad McKenna

GeoSystems Analysis, Inc.


Metadata and Zip File

Metadata


 [Rio Restore Memo](#)

Zip File

Download metadata, datasets, and current report in a zip file.

 [Download Zip File](#)

Data Sets

 [Rio Restore Domains and Schema](#)

 [Habitat Restoration Geospatial Data](#)

For archived data sets, contact the person listed under "Data Contact" above.

Reports

Current Report

Current report is not available.

Related Reports

The button below links to a list of all related reports.

 [Related Reports](#)

Data Description

The RioRestore tool also populates information into this standardized data structure (as available), and identifies and integrates project sites that are not included in previous geodatabases. The HRGDB developed by GSA under this project specifically includes HR sites constructed between Cochiti Dam on the upstream end and Elephant Butte Reservoir on the downstream end between the late 1990's and present as the first phase with the recognition that some projects may be outside that boundary and can be included at a later date. Although every effort was made to include all