


2023 MRGESCP Portal Workplan

<https://webapps.usgs.gov/MRGESCP/>

**WELCOME TO THE PROGRAM PORTAL**

[Events](#) [About](#) [Resources](#) [Science Symposiums](#) [Contact Us](#) [Login](#)

View the 2021 Annual Report!

The 2021 MRGESCP Annual Report gives you an overview of the Program's 2021 accomplishments and outlook for 2022. You can also read 2021 Signatory Highlights! Click this [Link](#) to view all MRGESCP Annual Reports.

[Read Out More](#)

Check Out the August Newsletter!

Check out the newsletter to find out what's happening in the MRGESCP! You can read about the uncertainty of monsoons, see the winner of the photo contest, learn about upcoming events in the MRG, and more! Click the [Link](#) to view all newsletters.

[Check It Out](#)

Watch the Collaborative Seminars!

Chavez, McColough, & Shaw presented on the Deep Dark Woods fire on Aug 11. Dudley presented on the 2021 RDSM Pop Mon Program on Aug 23. Click the link below to view both! Click this [Link](#) to view all seminar PPTs.

[Watch the Seminars](#)

Fill Out the Poll!

This Collaborative Poll is on managing vegetated islands and bars. Your responses will inform the upcoming workshop on October 4-5, 2022! Click the [Link](#) for results from all Collaborative Polls.

[Fill It Out](#)

MIDDLE RIO GRANDE ENDANGERED SPECIES COLLABORATIVE PROGRAM

The Middle Rio Grande Endangered Species Collaborative Program (MRGESCP or Program) is a partnership of 16 federal, state, tribal, local, and non-profit signatory agencies and organizations working together to support the recovery of endangered species in the Middle Rio Grande.

MRGESCP Mission

The MRGESCP provides a collaborative forum to support scientific analysis and implementation of adaptive management to the benefit and recovery of the listed species pursuant to the Endangered Species Act within the Program Area, and to protect existing and future water uses while complying with applicable state, federal and tribal laws, rules and regulations.

Upcoming Events

8 Sep**EXECUTIVE COMMITTEE MEETING**

Thursday 9:00am - 12:00pm

26 Sep**S&T AD HOC GROUP: RDSM HYPOTHESES DEVELOPMENT AD HOC MEETING**

Tuesday 1:00pm - 2:30pm

Recent Publications

Date Published: 2022/08/01

Final Rio Grande Silvery Minnow Annual Augmentation Plan 2023-2028

Archibakarion T.

Date Published: 2022/06/24

Rio Grande Silvery Minnow Population Monitoring During May 2022


New Mexico Meadow Jumping Mouse

Photo Credit: U.S. Fish and Wildlife Service


Pecos Sunflower

Photo Credit: U.S. Fish and Wildlife Service


Yellow-Billed Cuckoo

Photo Credit: Andy Reago and Chrissy Mc Claren


Southwestern Willow Flycatcher

Photo Credit: Shannon Caruso


Rio Grande Silvery Minnow

Photo Credit: Joel Luck

Funding for new development

The portal has been in its current form for about two years.

USGS has new funding from USACE for support and development of the portal through calendar year 2023.

Stakeholder input

Two stakeholder meetings were held in September and November of 2022 to evaluate the MRGESCP portal and refine the scope of work for the coming year.

The September meeting focused on

- How people use the portal (desktop and mobile)
- Data sets
- The interactive map
- External resources

The November meeting focused on potential new features.

Document library

- Speed up search tool
- Provide alternate method to find documents (list/table)
- Add messages and instructions to the search interface to improve the user experience

WELCOME TO THE PROGRAM PORTAL [Events](#) [About](#) [Resources](#) [Science Symposiums](#) [Contact Us](#) [Login](#)

MRGESCP Documents

[Acronyms & Abbreviations](#)

Search Options

Use the search menu to search and filter documents or use the buttons below to see a predefined list of documents.

Currently, **966** documents are in the document library.

Searches that produce a large list of results may take several seconds to display.

[View All Reports](#) [View All Rio Grande Silvery Minnow Reports](#)

Search Title by Keyword or Phrase

Search by Date

Start Date End Date

Document Type

☐ Agenda
☐ Data
☐ Memo
☐ Minutes
☐ MOA/MOU

WELCOME TO THE PROGRAM PORTAL [Events](#) [About](#) [Resources](#) [Science Symposiums](#) [Contact Us](#) [Login](#)

MRGESCP Documents

[Acronyms & Abbreviations](#)

Search Options

Search Title by Keyword or Phrase

Search by Date

Start Date End Date

Document Type

☐ Agenda
☐ Data
☐ Memo

2022/08/23

Collaborative Seminar (Dudley): 2021 RGSM Population Monitoring

Dudley R.K.

Document Type: Presentation [Related Documents](#)

Species: Rio Grande Silvery Minnow

Groups: Collaborative Seminar

2022/04/12

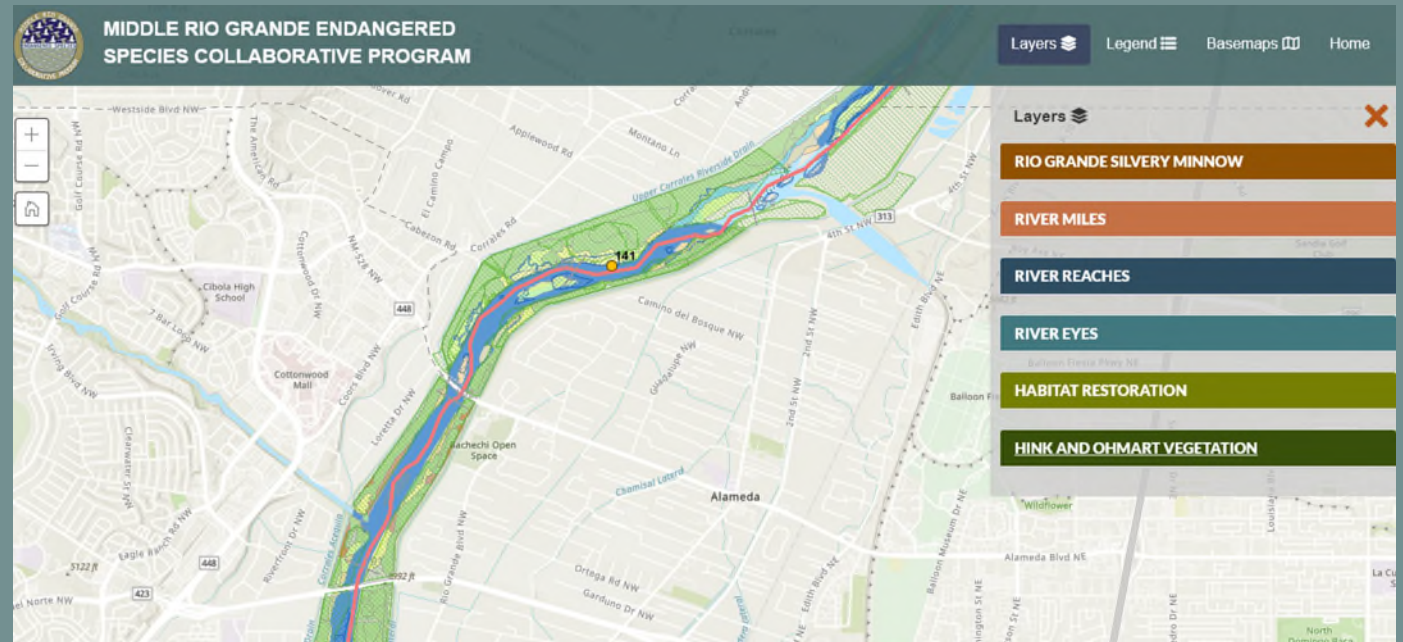
2022 April 12 Science and Adaptive Management Committee Meeting Materials

MRGESCP

Document Type: Agenda, Minutes, Read-Ahead, Charter/Charge, Draft, MRGESCP Plan, Follow-Up [Related Documents](#)

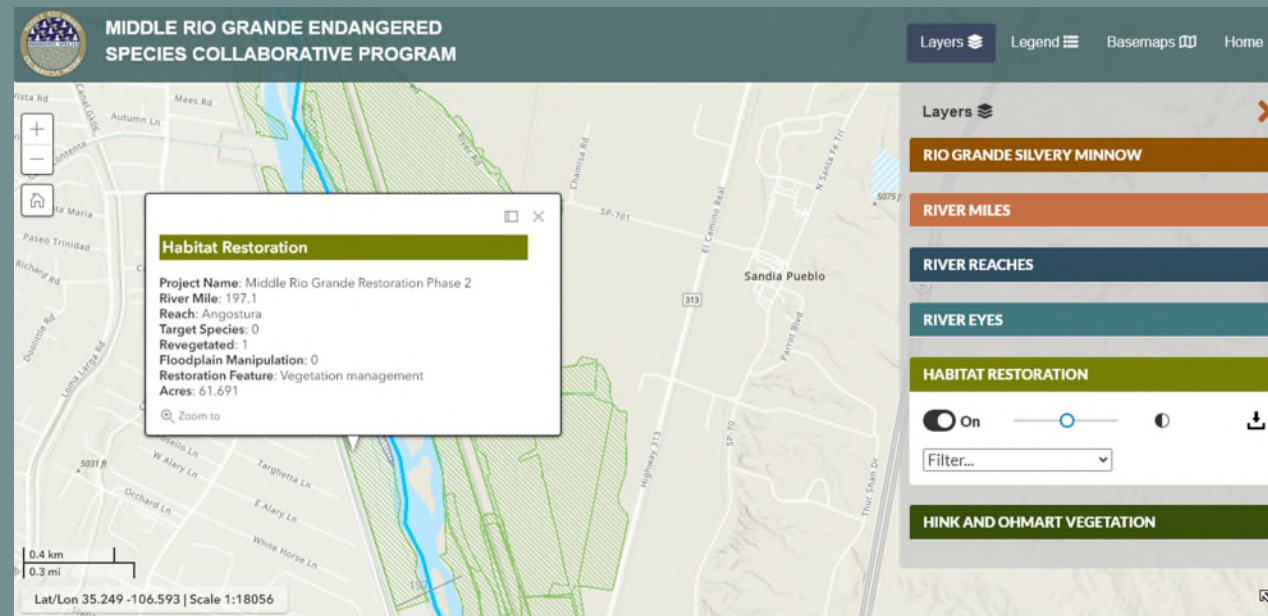
Interactive map – new or updated datasets

- 2022 River Miles
- Landmarks
- Vegetation (H&O, etc.)
- BEMP data
- Habitat Restoration
- Rescue data (RGSM)
- Augmentation data (RGSM)
- Population monitoring data (RGSM)
- USGS gages, real-time streamflow
- Critical habitat
- River Eyes
- Snow depth
- Soil moisture
- Additional map data suggestions welcome



Interactive map framework

- Migrate from ESRI JavaScript API to Leaflet
- Make the map more mobile friendly
- Improve filters and pop ups
- Create documentation for using MRGESCP map services in ArcGIS Online, ArcMap, ArcGIS Pro, QGIS, etc.



Add information about program partners

- Add logo, link, and description about the program partners and what MRGESCP projects they are working on.

16 SIGNATORIES



External resources page

Add page with links and short descriptions for external resources.

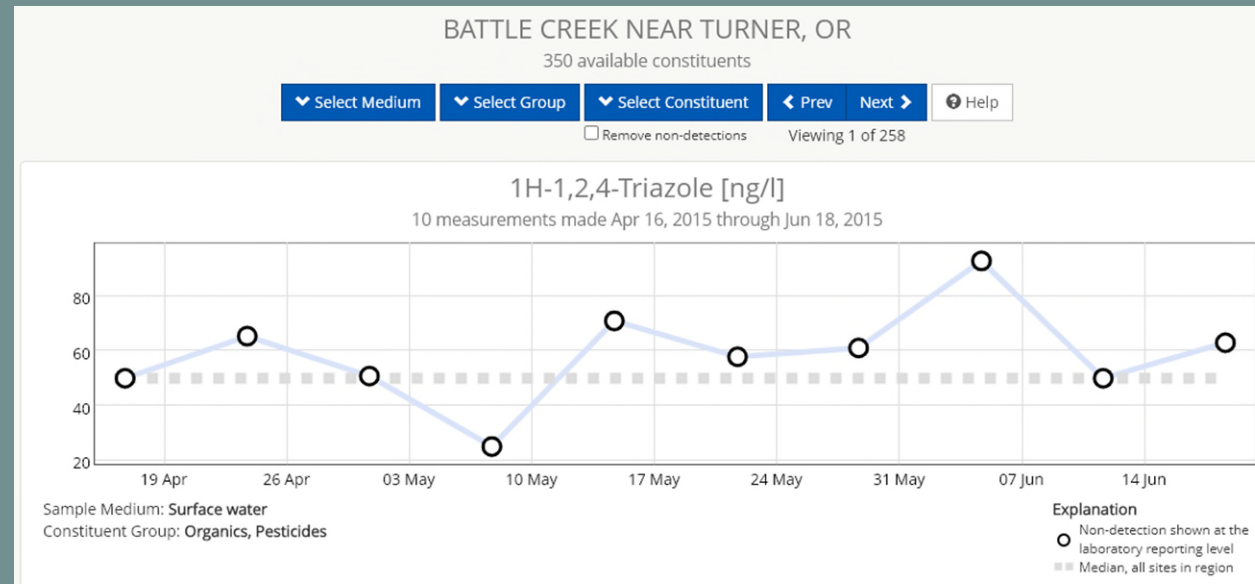
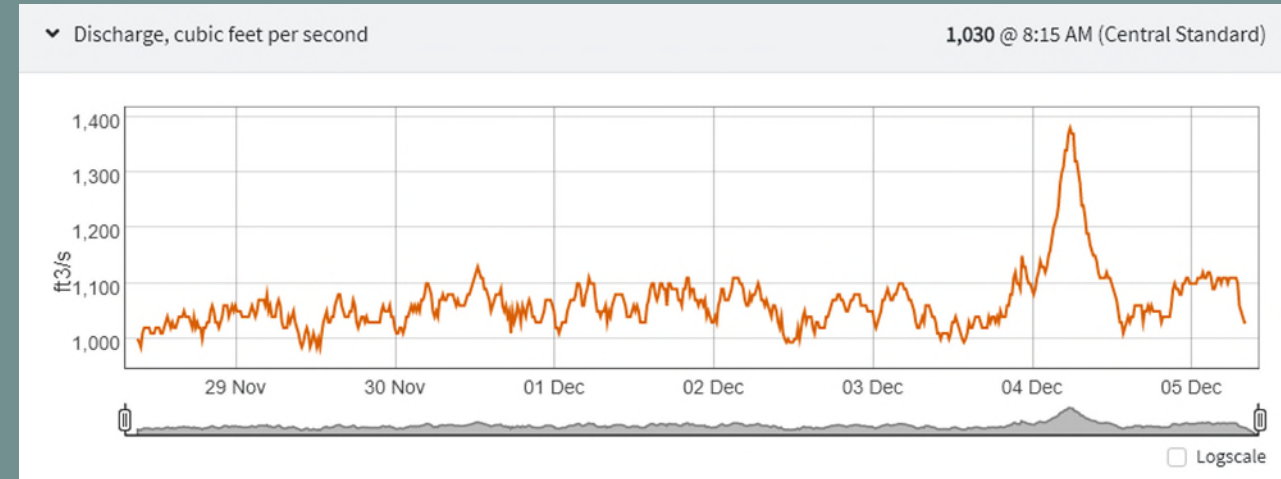
- State Wildlife Action Plan
- New Mexico Riparian Map
- Biota Information System of New Mexico
- USGS Water Dashboard
- Water Quality Portal
- Reclamation Reservoir Map
- USGS Surface Water for the Nation
- BEMP
- University of New Mexico
- Scientific literature and GIS data
- FWS endangered species pages
- Additional resource suggestions welcome

Review and improve website organization and user experience

- Fewer clicks to get to data
- Make site more engaging
- Make site more intuitive, easier to navigate (organization, sitemap, story map)
- Add more pictures
- Add descriptions for datasets, links, program partners
- Add key highlights from previous year
- Add instructions on how to get new data added to the map and the data pages, who to contact, how to request new features
- Provide examples, wireframes
- Test with users

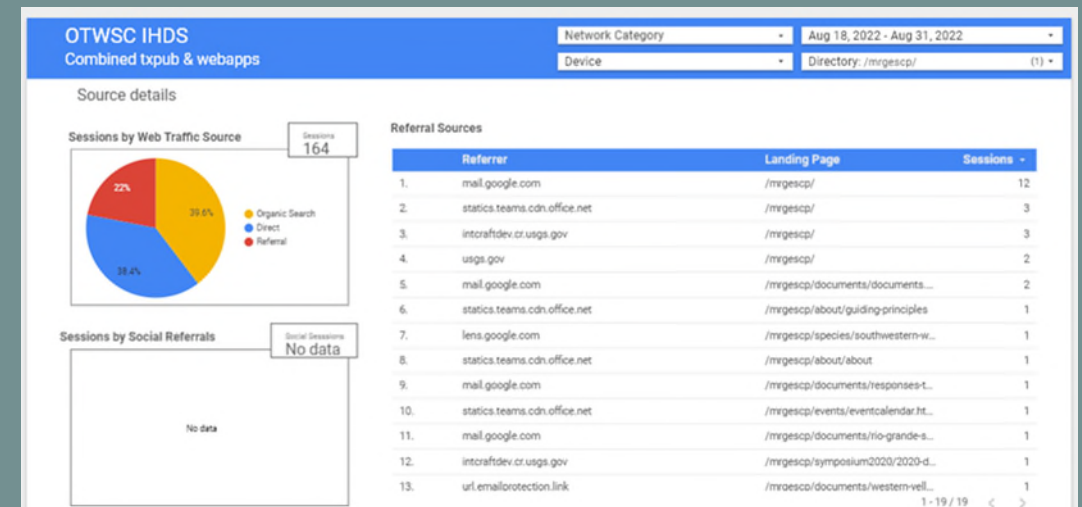
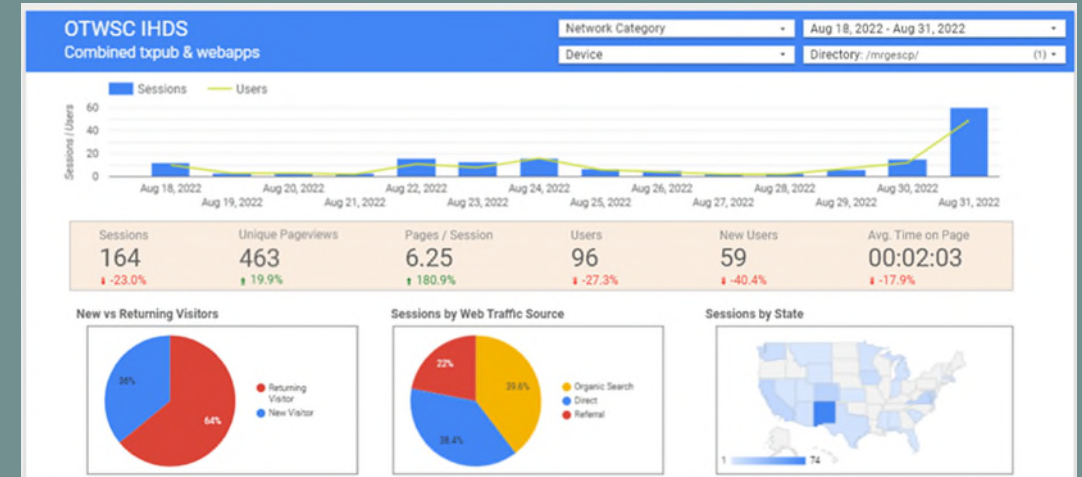
Explore time series options

- Create examples to demo
- Outline requirements for adding data to time series



Analytics

- Segregate analytics from WEST and USGS users
- Track downloads
- Track map layer usage
- Meet to discuss options for
 - Usage heat maps
 - Custom analytics reports



Additional tasks

- General site maintenance and user support
- Update the site database
- Update the content management system
- Migrate map services to newer formats, etc.
- Troubleshoot technical problems
- Maintain servers

Schedule

- Document library search –winter 2023
- External resources page and signatory logo page, spring 2023
- UX improvement- winter/spring 2023
- Time series dev/workshop- spring 2023
- Analytics- winter 2023
- Interactive map migration to Leaflet – winter 2023
- Interactive map- new data and data updates – spring/summer 2023

Next steps

- Think about long term funding. Current funding from USACE goes through calendar year 2023.
- Contribute data, documents, and ideas. Reach out to WEST and they will share it with the development team.
- Participate in the workshop for developing time series visualizations.
- Please help us make the portal a better product!

Questions?

<https://webapps.usgs.gov/MRGESCP/contact/contactus.html>

Contact Us

What is the nature of your inquiry?

Choose One

First Name

First Name

Last Name

Last Name

Email address

Enter email

We'll never share your email with anyone else.

Phone Number

XXX-XXX-XXXX

Leave us a message

Submit

