

Executive Committee Meeting
April 17, 2014

Meeting Materials:

Meeting Agenda

Meeting Minutes

Work Group Update Summary

Species Update

Minnow Action Team Update



**Middle Rio Grande Endangered Species
Collaborative Program
EXECUTIVE COMMITTEE
MEETING AGENDA
Thursday, April 17, 2014
9:00am – 12:00pm**

Location: ISC, State Engineer Office, 5550 San Antonio Dr. NE, Albuquerque, NM

- | | |
|---|-------------------|
| 1. INTRODUCTIONS AND REVIEW OF PROPOSED AGENDA* | <i>10 minutes</i> |
| 2. <i>DECISION</i> – APPROVAL OF March 27, 2014 EC MEETING SUMMARY* | <i>5 minutes</i> |
| 3. AGENCY FISCAL AND POLICY PLANNING UPDATES | <i>30 minutes</i> |
| A. US Army Corps of Engineers (<i>K. Schafer</i>) | |
| B. Bureau of Reclamation (<i>M. Hamman</i>) | |
| C. US Fish and Wildlife Service (<i>M. Shaughnessy</i>) | |
| D. Non-Federal update (<i>TBD</i>) | |
| E. Collaborative Program Projects (<i>CC Co-chairs</i>) | |
| i. CC transition work plan table | |
| 4. OTHER ACTIVITIES | <i>15 minutes</i> |
| A. Hydrology Forecast (<i>M. Hamman/USACE</i>) | |
| B. Species Update (<i>USFWS</i>) | |
| BREAK | <i>15 minutes</i> |
| 5. MAT 2014 RECOMMENDATIONS AND OPTIONS FOR POTENTIAL SPAWN AND RECRUITMENT FLOWS (<i>G. Haggerty</i>) | <i>60 minutes</i> |
| 6. OTHER ACTIVITIES | <i>15 minutes</i> |
| A. Report/update on Population Monitoring (CPUE) workshop planning meeting (<i>TBD</i>) | |
| | <i>5 minutes</i> |
| 7. MEETING SUMMARY | |
| 8. PUBLIC COMMENT | |
| 9. ANNOUNCEMENTS | |
| 10. <i>DECISION</i> - NEXT SCHEDULED EC MEETING May 15, 2014 | |

**denotes read ahead*

Members

ABCWUA
ISC
NMDA
Sandia Pueblo
UNM

APA
Isleta Pueblo
NMGF
Santa Ana Pueblo
USACE

CABQ
NMAGO
MRGCD
Santo Domingo Tribe
USFWS
Reclamation

Middle Rio Grande Endangered Species Collaborative Program
Executive Committee Meeting
April 17th, 2014 – 9:00am to 11:15am

ISC, State Engineer Office
5550 San Antonio Dr. NE,
Albuquerque, NM

Decisions

- The March 27th, 2014 EC meeting summary was approved for finalization with a spelling correction on page 6.

Actions

- Non-federal partners are reminded to submit their 2013 Non-Federal Cost Share to Rhea Graham (and copied to Ali Saenz) as soon as possible. Please use the Cost Share Reporting Template (Document ID: 4187) on the database.

Requests/Recommendations

- Some attendees requested that the joint Reclamation and Service Response Letter to the Wildearth Guardian's Notice of Intent be posted to the database. – *complete*; (Database Document Title: EC Handout 04/17/14 – NOI Response Letter and Attachments, Document ID: 6209)
- In addition to the provided Spawning Spike for Egg Collection Flow Options graphs, some attendees requested the MAT include a graph/plot of what the flow scenarios would look like with no actions. – *complete*; Database Document Title: EC Handout 04/17/14 – MAT Update Revised; Document ID: 6291)

Announcements

- Beginning in April, the Program Management Team (PMT) will consist of 2 Reclamation staff positions – the Interim Program Manager and the Program Assistant.
- The State Land Office will be having an Earth Day “Tree Planting” media event on Wednesday, April 23rd from 9:00am to 11:00am. For more information please contact Karin Stangl, Assistant Commissioner of Communication New Mexico State Land Office (505) 699-1018 cell (505) 827-5739 work. Please R.S.V.P. your attendance to Marti Niman at 505-827-3650.

Next Meeting: May 15th, 2014 from 9:00am to 1:00pm TENTATIVELY at ISC

- Tentative agenda items include: (1) Decision – Approval of 2014 MAT Emergency Actions; (2) Update on Spawning Spike & Egg Collection efforts; (3) CC 2014 Work Plan and Work Group Transition Period Recommendation Table; (4) Review of 2012 and 2013 Program Annual Reports;
- Potential Future Agenda Items: (1) Discussion on chartering (if/when) of MAT;

Upcoming Dates and Deadlines:

- April 23rd – State Land Office Earth Day Media Event “Tree Planting”, 9:00am to 11:00am
- April 29th – MAT meeting, 9:00am to 11:00am at Reclamation
- May 6th – MAT meeting, 9:00am to 11:00am at Reclamation
- May 7th – CC meeting, 9:00am to 11:00am at Reclamation
- May 13th – 15th – Corps' Stream Restoration Workshop
- May 15th – EC meeting, 9:00am to 1:00pm at ISC
- May 20th – HRW meeting, 12:30pm to 3:30pm at ISC
- May 27th – MAT meeting, 9:00am to 11:00am at Reclamation

Meeting Summary

Introductions and agenda approval: Rick Billings brought the meeting to order and introductions were made. A quorum was confirmed and the agenda was approved with no changes.

Approval of the March 27th, 2014 EC Meeting Summary:

- The March 27th, 2014 meeting summary was approved for finalization with a spelling correction on page 6:
 - Under the *COE Habitat Restoration Monitoring for Fish* section, the word “duel” was corrected to “dual.”

Agency Fiscal and Policy Planning Updates:

- *U.S. Army Corps of Engineers (USACE or the Corps):*
 - The Corps’ actions from the March 27th meeting have been addressed.
 - The Corps’ Biological Assessment (BA) revisions are underway. However, due to schedule constraints, resources have had to be switch to other projects at this time. This may result in time delays on the BA process.
- *Bureau of Reclamation (Reclamation):*
 - Reclamation and the Fish and Wildlife Service (Service) have just finalized a joint response to the Wildearth Guardian’s Notice of Intent (NOI). The response letter includes description of the agencies (and the Program’s) past and continuing efforts to meet all the needs while being more flexible. The current and recent hydrologic conditions are highlighted in the letter and it is explained what a potential lawsuit would actually “target” if brought forward. A description of the transition to the Recovery Implementation Program (RIP) and the additional tools this could provide is also in the response letter. (*Database Document Title: EC Handout 04/17/14 – NOI Response Letter and Attachments; Database ID: 6209*)
- *Non-Federal Update:*
 - Representatives of the non-federal agencies met with members of congress and their staff to discuss the RIP, details about the current situations and current work efforts. They advocated for continued support for the RIP as a solution even with the potential lawsuits and other conflicts. Also discussed was the “gap” between the expectations of increased work load versus decreased funding. Senator Udall asked for a letter that he could distribute to agencies requesting support for the RIP.
 - The Senator’s Office is proposing a National Science Academy study on the Rio Grande Basin issues and will include review of short term actions.
 - An authorization bill is being put forth in California to address drought issues. The non-federal representatives were asked to provide some possible language on options for NM (ex. irrigation efficiency improvements, diversions, storage, etc.).
 - Middle Rio Grande Conservancy District (MRGCD or District) is holding informational meetings for their constituency (farmers) on the water situation. Different perspectives and attitudes have been observed in the different counties – from “resigned to the situation” to “where’s my water?”
 - New Mexico First convened a two-day town hall that brought together nearly 350 people from around the state to develop practical recommendations on water use and policy. Town hall participants focused on key issues including: meaningful long-range and crisis water planning, NM’s aging water infrastructure, conservation and reuse and water

development. New Mexico First is expected to issue a press release on the event. Interestingly, it was observed by some participants that there seems to be a very clear distinction between people who strongly support Endangered Species Act and conservation issues and those who strongly do not.

- *Collaborative Program Projects:*
 - *Coordination Committee (CC) Update:* The CC has been focused on development of a joint 2014 CC work plan that includes the actions and activities of the standing work groups. The CC is finishing the transitional plan for chartered work groups – including recommendations on which groups should be meeting and contributing during the transition and which groups can be suspended through the transition. The CC has also begun discussing how to move forward on adaptive management and formation of the Adaptive Management Committee (AMC) with the intent of providing some recommendations and constructive guidance to the Executive Committee (EC), Executive Director, and Science Coordinator. The CC will be reviewing the Draft Final 2012 and 2013 Program Annual Reports as well.

Other Activities:

- *Hydrology Forecast:*
 - The April 1 forecast is similar to the March 1 forecast, but a little more pessimistic. However, as time passes, there are more confidences in the stream flow forecasts.
 - *Heron Reservoir:* Southern Colorado remains in fairly cool temperatures, so there are not many diversions into Heron yet. The total San Juan/Chama inflow is at 6,426 ac-ft. San Juan/Chama allocations are dependent on this year's runoff - so those allocations might not be made until into or past the run off period.
 - *El Vado Reservoir:* There is 16,416 ac-ft of native water in El Vado right now. If the snow melts off quickly, then initial modeling indicates that up to 25,000 ac-ft could be stored. However, if the snow melt is slow that amount may be less than 20,000 ac-ft in storage.
 - *Abiquiu Reservoir:* Abiquiu is at 100% and the majority is MRGCD's San Juan/Chama storage.
 - Water releases for the minnow did start at the beginning of the month – 4,303 ac-ft of supplemental water has been released to date.
 - The remaining snow pack is at high elevation. Most of the mid- and lower elevation snow either ran off already or wasn't there to begin with. If the snow melts of slowly and late, there will not be much of a spring peak on the main stem.
 - In response to a question regarding the 4th consecutive poor years, it was shared that there was a period of 3 consecutive dry years back in the 1950s, but no known 4 consecutive years are in the history of records. The initial Upper Rio Grande Water Operations Model (URGWOM) runs indicated that everyone can be expected to run out of water by the end of June or early July.
- *Species Update:*
 - March 2014 data from the New Mexico Fish and Wildlife Conservation Office (NMFWCO) for the Angostura reach indicates that the minnow densities (fish/100m²) have decreased from 0.28 fish/100m² to 0.07 fish/100m².
 - Species richness in March decreased compared to February. In February species richness ranged from 3 to 8, with an average of 4.2, and in March species richness ranged from 2 to 6 with an average of 3.4.

- Total fish density of all fish species decreased from 46.8 fish/100 m² in March 2013 to 17.1 fish/100m² in March 2014.

Minnow Action Team (MAT) 2014 Recommendations and Options for Potential Spawn and Recruitment Flows

- The Minnow Action Team (MAT) ad hoc group of the EC has been meeting regularly. The meetings have been very collaborative and cooperative with many individuals attending, reviewing data, and working toward creative options and solutions for 2014.
- The Biology ad hoc Subgroup met to discuss the needs of the silvery minnow and identify biological options. The Hydrology ad hoc Subgroup then took the biology subgroup recommendations to see what possible hydrological scenarios might be achieved given the current unknowns, conditions, and forecasts for spring runoff.
- In summary, the Biology ad hoc Subgroup has recommended the following option(s) as most prudent for 2014:
 - Maximize potential for minnow egg production and collection during the 2014 spring runoff. It is acknowledged that there may not be a good recruitment this year, but if the wild minnow spawn in the river then as many eggs as possible can be collected to (1) replenish the broodstock at the propagation facilities to maintain genetic diversity and (2) rear any remaining eggs for augmentation back to the river in the fall. And hopefully, there will be some recruitment in the river.
 - To optimize the chance for a recruitment flow, the biologists strongly encourage increased flow for a 7-day period, with a sharp ascending limb and gradual receding limb. This would produce mostly in-channel wetting and habitat and not really any overbanking.
 - After trying to create conditions expected to encourage spawning and the collection of as many of the eggs as possible, MAT would recommend attempting to create and support conditions that are favorable to juvenile fish development for as long as possible.
 - Juvenile fish can be salvaged after approximately July 15th, when they are of sufficient size to be caught. However, the biologists recommend trying to maintain wetted conditions for as long as possible.
 - Higher flows tend to result in better recruitment (more habitat, longer periods of inundation, possibly better juvenile rearing habitat, sometimes longer periods of wetted river); and conversely, lower flows have been correlated with poorer recruitment as indicated in the October census. However, more eggs are collected in the spring when flows are low. For comparison purposes, it was shared that in 2013 a small spike in flow from the Isleta Diversion Dam resulted in the collection of 60,000 eggs; 50% of which survived. Prior to that, very few eggs were being collected. The most eggs collected have been 80,000, but that amount is rare.
- In summary, the Hydrology ad hoc Subgroup has recommended the following flow scenarios in response to the biology recommendations and the current forecasts:
 - Produce a spawning pulse through the Middle Rio Grande that results in flows of 1,500 cfs (Option 1) to 1,800 cfs (Option 2) at Central Avenue gage for a duration of 7 days with a 250 cfs per day receding limb through planned movements of ~12,000 ac-ft of San Juan/Chama and ~6,000 ac-f of Area Capacity (ACAP¹) water. Creation of a spawning pulse maintains compliance with 2003 Biological Opinion (BO).

¹ Sediment surveys are done on the Abiquiu Reservoir to determine changes in area capacity for different elevations and update the area capacity table. In the past, these have been done with cross-sections. This year, the sediment survey was completed

- Requirements to produce a spawning spike include a minimum native flow of 800 cfs at Otowi and 100 cfs at San Marcial. Right now, we believe the most likely time to have 800 cfs native flow at Otowi is going to be late April or early May.
- Considering that the 1st spawning spike pulse is likely to occur soon, there are some temperature concerns that not all the minnow will be gravid enough to actually spawn. There are observations that the fish can spawn in several “waves.” To maximize the egg collection, a second (or even third) small, short spawning spike has been suggested. Using changes in normal operations, these small “pulses” could trigger additional spawning. The second spawning pulse will have to occur 2 weeks after the 1st spawning spike.
- Caveats to keep in mind: we will possibly be out of water, both irrigation and supplemental, very quickly this year. There is nowhere near the 45,000 ac-ft of supplemental water that was used last year. Last year, we were bailed out with monsoons in July and storms in September.
 - It was suggested that the MAT document the difference between the modeling and proposed scenarios versus what actually occurs. This will help demonstrate any successes and which proposed actions worked.
- The suggested activities are based on the best technical assessment of the situation and given conditions. The MAT would like a general “acknowledgment” that they are moving in the right direction for 2014.
 - With no concerns or objections voiced, there was a “collective nod” from EC members that the MAT should continue.

Other Activities: The Population Monitoring (Catch Per Unit Effort – CPUE) Workshop

- The Population Monitoring (CPUE) Workshop planning is still underway. The structure of the workshop is still being negotiated, but the goal is that it will be similar to other workshops from other recovery programs. Between planning, funding, scheduling external scientists, and the field season, the workshop is not expected to take place until late fall.
 - In response to a concern regarding the use of “CPUE” in the workshop title, it was clarified that the workshop will be focused on trying to formulate the monitoring of the RIP, what the monitoring program should look like, and what tools are best suited to meet/address those needs. In this context, the CPUE becomes one of the many tools that the RIP can consider.
 - It is acknowledged that CPUE is what has been used in the past, is what is currently used, and the database for building the workshop happens to come from that CPUE data. The purpose of the workshop is to provide useful scientific information to the RIP in order to determine how to move forward with the monitoring program.
 - It was suggested that the acronym “CPUE” be taken out of the workshop title to help avoid the implications and concerns.

Meeting Summary: Brent Rhees provided a brief meeting summary:

- The EC approved today’s meeting agenda with no changes. A quorum was present.
- The March 27th, 2014 meeting summaries were approved for finalization with one spelling correction.
- Agency updates were provided. The non-federal partners are reaching out to congressmen and their water users with information on the drought situation.
- The hydrologic forecasts continue to be bleak and the species is doing poorly.

using a 3D digital elevation model which is more accurate. The result of the survey is that there is approx. 6,000 ac-ft more capacity behind the dam than original thought. By default, this “additional water” is considered native water.

- With cooperation and coordination, the MAT is exploring realistic options for this, the 4th consecutive poor water year. Everyone is working together and the MAT suggested activities to maximize minnow egg collection could replenish the broodstock for genetic diversity as well as possibly result in some wild recruitment in the river.
- The Population Monitoring Workshop is being planned for this fall.

Public Comment

- There was no public comment.

Announcements

- Beginning in April, the Program Management Team (PMT) will consist of 2 Reclamation staff positions – the Interim Program Manager and the Program Assistant.
- The State Land Office will be having an Earth Day “Tree Planting” media event on Wednesday, April 23rd from 9:00am to 11:00am. For more information please contact Karin Stangl, Assistant Commissioner of Communication New Mexico State Land Office (505) 699-1018 cell (505) 827-5739 work. Please R.S.V.P. your attendance to Marti Niman at 505-827-3650.

Next Meeting: **May 15th, 2014 from 9:00am to 1:00pm TENTATIVELY at ISC**

- Tentative agenda items include: (1) Decision – Approval of 2014 MAT Emergency Actions; (2) Update on Spawning Spike & Egg Collection efforts; (3) CC 2014 Work Plan and Work Group Transition Period Recommendation Table; (4) Review of 2012 and 2013 Program Annual Reports;
- Potential Future Agenda Items: (1) Discussion on chartering (if/when) of MAT;

Executive Committee Meeting Attendees April 17th, 2014

Attendees:

<i>Representative</i>	<i>Organization</i>	<i>Seat</i>
Brent Rhees	Bureau of Reclamation	Federal co-chair
Rick Billings (A)	Albuquerque/Bernalillo County Water Utility Authority	Non-federal co-chair
Steve Farris (P)	NM Attorney General’s Office	NMAGO
Jennifer Faler (A)	Bureau of Reclamation	Reclamation
Janet Jarrett (P)	Assessment Payers Association of the MRGCD	APA
Kris Shafer (A)	U.S. Army Corps of Engineers	Corps
Matt Schmader (P)	City of Albuquerque	COA
Rolf Schmidt-Petersen (A)	Interstate Stream Commission	ISC
Subhas Shah (P)	Middle Rio Grande Conservancy District	MRGCD
Michelle Shaughnessy (P)	U.S. Fish and Wildlife Service	Service
Tom Turner (P)	University of NM	UNM
Ryan Ward (P)	NM Department of Agriculture	NMDA
Matt Wunder (P)	NM Department of Game and Fish	NMDGF

Others

Jim Wilber	Bureau of Reclamation
Josh Mann	Bureau of Reclamation
Ryan Gronewold	U.S. Army Corps of Engineers
Beth Pitrolo	U.S. Army Corps of Engineers
William DeRagon	U.S. Army Corps of Engineers
John Vradenburg	U.S. Fish and Wildlife Service /BdA NWR

Stacey Stanford	U.S. Fish and Wildlife Service /Fisheries
Joel Lusk	U.S. Fish and Wildlife Service
Grace Haggerty	N.M. Interstate Stream Commission
Chris Shaw	NM Interstate Stream Commission
Rich Valdez	SWCA/for ISC
Eric Gonzalez	SWCA
Brooke Wyman	MRGCD
Kyle Harwood	BBD/City of Santa Fe
Rick Carpenter	BBD/City of Santa Fe
Marta Wood	Alliant Environmental (note taker)

Workgroup Update Summary
Middle Rio Grande Endangered Species Collaborative Program
Executive Committee Meeting
April 17, 2010

Project Management Team

The PMT continues to meet weekly to follow up on action items from the Coordinating Committee (CC) and the Executive Committee (EC), and to discuss and implement improvements to the Program.

Revised LTP Development

In keeping with the revised Long Term Plan (LTP) schedule, the third working CC meeting to further the development of the LTP with a focus on future Program activities was held on April 14. A long list of future Program activities (Table 7.0) to meet recovery plan priorities, elements, and Biological Opinion (BiOp) requirements has been developed, reviewed, revised, and prioritized by the workgroups. Most of the workgroup priority 1 activities have been identified and assigned to workgroup members to prepare an activity summary. Examples of past and future activities summaries were presented at the working CC meeting. Participants assisted in identifying those activities that appeared redundant or could be combined and/or sequenced with another activity. The Program has contracted additional administrative and technical support through GenQuest and TetraTech. Jean Burt and Barbara Portzline, GenQuest, continue to work on past Program activities, Table 7.0, and the revised LTP text. The revised LTP development will be a priority for the CC, the PMT, the workgroups, Water Consult and GenQuest for the next few months.

Adaptive Management

The CC reviewed and commented on a draft statement of work (SOW) for Adaptive Management Plan Development to include scientific facilitation and technical writing, which was provided to the Reclamation Contracting Officer (CO) on April 8.

On March 31, the CC was provided with the Habitat Restoration (HR) workgroup's 2010 annual work plan and 2009 workgroup accomplishments, and a draft Scientific Code of Conduct. The CC also reviewed a revised charter for the Species Water Management (SWM) workgroup. Jericho Lewis has been coordinating contractual activities related to the Effectiveness Monitoring Plan, the Gear Evaluation Study, the Adaptive Management Plan, and the revised LTP development. Diana Herrera has provided an updated quarterly financial report for the quarter ending March 31, 2010. Monika Mann is assisting the HR workgroup with LTP future activities by assigning the development of priority 1 activity summaries to workgroup members, working closely with the co-chair, and continuously reviewing and updating LTP Table 7.0. Amy Louise has agreed to also serve as the PMT liaison to, and technical member of, the PHVA ad hoc workgroup, continues to work with the Species Water Management (SWM) workgroup and the San Acacia Reach (SAR) ad hoc workgroup, provides regular updates on snowpack measurements to the PMT, and helped prepare for the non-federal appropriations request trip to Washington, D.C.. Stacey Kopitsch serves as the PMT liaison for the Science, Population Viability Analysis (PVA) and Monitoring Plan Team (MPT) workgroups, and has provided much needed assistance to the ScW in the prioritization and development of future activities summaries, especially with respect to Southwestern willow flycatcher activities. Stacey has also been the lead in compiling CC and workgroup comments on the draft Scientific Code of Conduct. Susan Bittick has been leading the U.S. Army Corps of Engineers (USACE) efforts to: award Task

Order #2 for the Database Management System (DBMS); review the table of future Program activities for the revised LTP; and coordinate a LIDAR presentation for the CC. The Program continues to receive much needed contracted support for Program administration from Jenae Maestas, GenQuest, and Cassie Brown, Marta Wood and Rachelle Schlupe, TetraTech. Marta had a baby boy named Matthew on April 2. Jenae has really stepped up to provide assistance on edits to Table 7.0 of the LTP. Reclamation will be advertising soon for a PMT replacement for Kathy Dickinson. Kathy is still involved in the reviews of the draft LTP and activities summaries.

Habitat Restoration Workgroup

The HRW met on March 16 to discuss several items including RM 83 report issues, the way forward, and changes in the schedule to meet report deadlines. Also discussed was HR's report deliverable process as well as status updates on the Los Lunas Fisheries Report. The workgroup continues to discuss and give input into the LTP Future Activities Table 7.0 including assigning activity priorities and developing summaries.

The River Maintenance Workshop has been scheduled for September 21, replacing the regular HR monthly meeting. The next meeting is April 20 from 12:00-3:00 pm, at USACE. Potential discussion items include RM83 workshop costs and peer review scope of work, the Environmental flow (E flow) workshop report, and volunteers for co-chair.

Monitoring Plan Team ad hoc Workgroup

Proposals for the effectiveness monitoring plan (EMP) Indefinite Delivery Indefinite Quantity (IDIQ) contract were received on March 22 and a Technical Proposal Evaluation Committee (TPEC) review followed on March 24 and 25. Additional information has been requested from the proposers, thus no contract award has been made yet. The MPT is therefore working on a "Plan B" in order to accomplish the low intensity monitoring for this spring. This will consist of a collaboration of efforts from several sources, including Reclamation, USACE and the U.S. Fish & Wildlife Service (USFWS). On April 5, reconnaissance visits were made to various habitat restoration sites along the Albuquerque Reach in support of this plan. A follow-up meeting was held on April 7 to further discuss scheduling of the low intensity monitoring.

Science Workgroup

The ScW held a regular meeting on March 16. The focus of the meeting was to assign priorities to the LTP future activities table. The workgroup is currently tasked with writing activity summaries for roughly 50 high priority projects. A special ScW meeting was held on April 6, where the contractor, SWCA, presented a Fish Community Monitoring and Fish Sampling Methodology (Gear) Evaluation presentation. A preliminary study design for field sampling was also presented, and input from the workgroup is requested to be incorporated into the design. The next regularly scheduled Science meeting is April 20.

Species Water Management Workgroup

The SWM workgroup met on April 7 to discuss the LTP. SWM continues to provide information for the LTP future activities and is currently producing future activity summaries. The next meeting is scheduled for May 5 at BIA from 10:00 am – 12:00 pm.

San Acacia Reach ad hoc Workgroup

The SAR workgroup will meet on April 22 to review and clarify “Agency Response to Themes” in Socorro. SAR completed the LTP future activities consisting of:

- Develop White Papers on each agency’s/entity’s current authorizations and strategies to address resource management issues in the SAR;
- Analysis of floodplain encroachment problem areas in the SAR;
- Implement required studies/analyses of proposed improved strategies in the SAR; and
- Develop and perform external peer reviews on Recommendation Reports for new and/or improved strategies to address resource management issues in the SAR of the Rio Grande.

Population Viability Analysis (PVA)/Biology Workgroup

The PVA workgroup is continuing development of the PVA models. The workgroup is due to meet again for a full day May 4 and half a day on May 5. The assignment of a new co-chair is still pending, with volunteers and suggestions to take place via email. The draft PVA annual work plan and charter are also being reviewed by the workgroup via email and will be submitted for approval following the assignment of a new co-chair.

PHVA/Hydrology ad hoc Workgroup

Amy Louise is the new PMT liaison for this workgroup and will be present at the next meeting on May 18. Members are drafting SOWs for the FY10 funding allocated to PHVA modeling. Future activity summaries for 3 PHVA activities are being reviewed by the workgroup. The PHVA Decision Log has been updated and is ready for review by the PHVA workgroup members.

Public Information and Outreach Workgroup

The PIO met on April 8 and discussed the LTP future activities, changes to the PIO charter, the Program video link for the website and distribution. The PIO is drafting a press release, compiling the distribution list, and planning visits to show the video to workgroups and other groups. Members are also developing a Program “business card” and compiling significant documents related to each Program signatory. PIO may assist in the Route 66 ribbon cutting and will share the packets used for the Congressional visits with the group. The next meeting is May 12 from 10:30 am to 12:30 pm at Reclamation.

Database Management System ad hoc Workgroup

Task Order 2 has been awarded. The SOW includes hardware, software and backup; and development of the database as described in the Business Analysis and Needs Assessment Report. The workgroup will meet the week of April 26 to kickoff Task Order 2 and elect a chair and co-chair. The charter and work plan will be submitted to the CC subsequent to this meeting.

Species Update for Executive Committee (April 17, 2014)

- In March 2014, NMFWCO collected 2 hatchery-raised silvery minnow in the Angostura Reach, compared with 8 silvery minnow collected in February. Density (fish/100m²) of silvery minnow decreased from 0.28 fish/100m² to 0.07 fish/100 m² (Figure 1).
- Species richness in March decreased compared to February. In February species richness ranged from 3 to 8, with an average of 4.2, and in March species richness ranged from 2 to 6 with an average of 3.4.
- Total fish density of all fish species decreased from 46.8 fish/100 m² in March 2013 to 17.1 fish/100m² in March 2014.

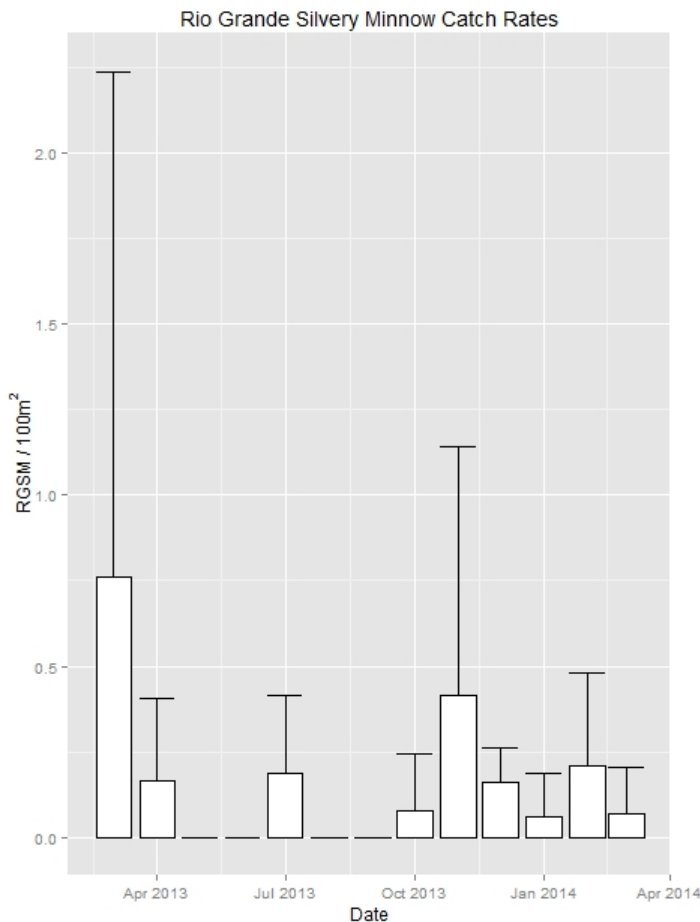


Figure 1. Rio Grande Silvery Minnow monthly catch rates during monitoring (March 2013-March 2014) by New Mexico Fish and Wildlife Conservation Office in the Middle Rio Grande. Bars represent the mean catch-per-unit-effort, and tails represent the standard deviation for that month.

Western yellow-billed cuckoo

- The Service has reopened the public comment period on the proposed rule to list the cuckoo as threatened. Comments will be accepted through April 25, 2014.

As a result of the current hydrologic conditions and forecast, the Minnow Action Team (MAT) is providing an update on the following biologically-based recommended actions during the Spring of 2014.

Biologic Recommendations for Rio Grande Silvery Minnow in 2014

- *Maximize potential for egg production by Silvery Minnow during the 2014 spring runoff*
 - Create conditions expected to encourage RGSM to release eggs -
 - Collect and transport up to 1,000,000 eggs to hatcheries
 - Create conditions to allow eggs to reach larval stage
 - Maintain habitat conditions favorable for juvenile fish development as long as possible, preferably through July 14
 - Monitor biological and physical parameters to evaluate affects

Hydrologic Recommendations for Silvery Minnow Spawning in 2014

- *Maintain continuous river to Elephant Butte prior to spawning events*
 - Use Supplemental water as needed
 - Conduct River Eyes
 - Pump from LFCC Pumping as necessary

- *Produce a spawning pulse through the MRG that results in flows of 1500 cfs (Option 1) to 1800 cfs (Option 2) at Central Avenue gage for duration of 7 days with a 250 cfs per day receding limb.*

Creation of a spawning pulse maintains compliance with 2003 BO.

 - Requires a minimum natural flow of approximately 800 cfs at Cochiti and 100 cfs at SM
 - Timing is expected to be late April to early May due to natural runoff conditions
 - Spawning pulse results from planned movements of SJC and ACAP Water to Elephant Butte reservoir totaling 18K AF. If additional water becomes available, higher flow (Option 2) may be possible
 - Supplemental water not to be used for spawning pulse, conserved for later use
 - LFCC Pumping can also be curtailed during the duration of the higher flows
 - Careful monitoring of flows and diversions during the spawning pulse

- *Produce one or more additional short duration spawning spikes in mid-May to June to ensure egg collection is maximized.*
 - Follows at least 2 weeks after initial spawning hydrograph
 - Achieved through coordination with MRGCD operations, no additional water required
 - Concentrate on Isleta Diversion with egg collection in Los Lunas and possibly San Acacia reaches
 - Duration of 1-2 days with Biopark in the lead for egg collection/volunteers may be needed

- *Ramp down from spawning hydrograph and support continuous flow through June 15, continue to maintain compliance with 2003 BO, if possible.*

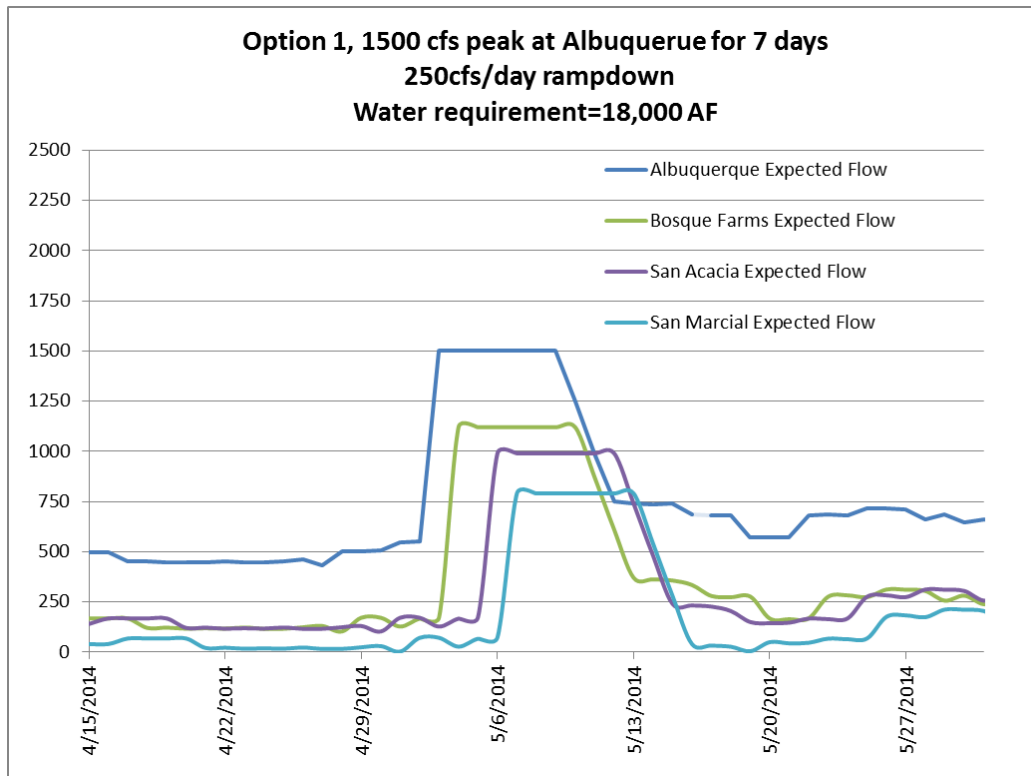


Figure 1. Spawning spike for egg collection and larval recruitment based on 18,000 ac-ft water requirement

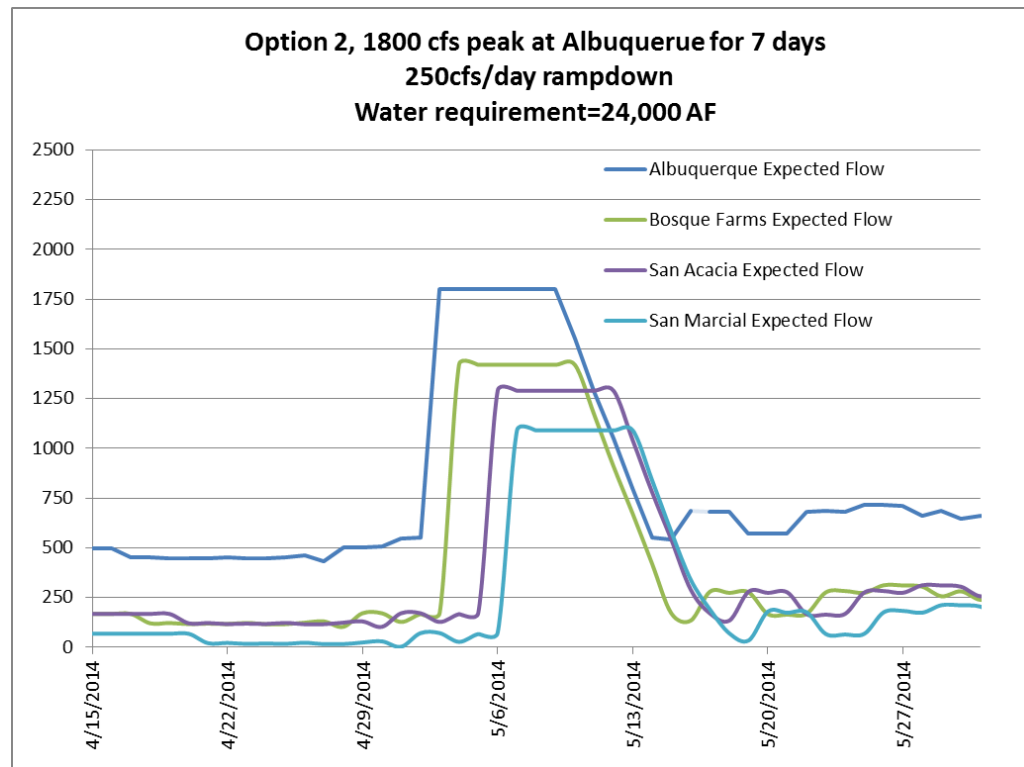


Figure 2. Spawning spike for egg collection and larval recruitment based on 24,000 ac-ft water requirement