

Coordination Committee Meeting
May 12, 2010

Meeting Materials:

Meeting Agenda

Meeting Minutes

Middle Rio Grande Endangered Species Collaborative Program
Coordination Committee Meeting
12 May, 2010 Meeting – 1:00 pm – 4:00 pm
Bureau of Reclamation

Draft Meeting Agenda

1. Introductions and Agenda Approval
2. Action Item Review (see below)
3. **Decision** - Approval of 04/28/10 CC meeting summary*
4. Ortho-Photography and LiDAR Presentation by John Peterson
5. Review Program By-Laws concerning signatories*
6. **Decision** - Review/Approve/Revise:
 - Database Management System (DBMS) draft charters*
 - DBMS 2010 work plan*
 - Population Viability Analysis (PVA) draft charter*
7. **Decision** - Review/Approve/Revise draft Peer Review Questions
 - RSGS Population Estimation *
 - RGSM Population Monitoring*
 - RGSM Genetics Monitoring and Assessment*
 - RM 83*
 - Albuquerque Reach A&R*

Next meeting – May 26, 2010 10:00 am -4:00 pm @ Reclamation

****denotes read ahead***

April 28, 2010 Actions

Brooke Wyman will send an email to Yvette McKenna requesting that the workgroups complete all LTP Future Activity summaries by May 21, 2010.

CC members will read the Program By-Laws for discussion at the May 12, 2010 CC meeting.

The CC would like Yvette McKenna to check the official list of signatories against the Program By-Laws. Yvette will pay special attention to the number of signatories and if there is currently a signatory that represents a significant portion of the environmental community.

Middle Rio Grande Endangered Species Collaborative Program
Coordination Committee Meeting
12 May, 2010 Meeting – 1:00 pm – 4:00 pm
Bureau of Reclamation

Decisions and Recommendations

The April 28, 2010 meeting summary was approved with no changes.

The Coordination Committee (CC) approved the draft Charter and 2010 Work plan for the Database Management System (DBMS) workgroup.

The Population Viability Analysis (PVA) draft Charter was approved with the change that the PVA will disband after the BA/BO(s) consultation process.

The CC recommends for peer review in order of priority (1) RGSM Population Estimation, (2) RM 83, (3) RGSM Population Monitoring, (4) RGSM Genetics Monitoring and Assessment, (5) PVA models.

The CC recommends that the two PVA models undergo peer review once functional formats/outputs become available.

The CC recommended that the Peer Review Report from the San Acacia A&R Report be used to evaluate the draft Albuquerque A&R Report.

Actions

The CC will review and submit comments on the draft peer review questions for reports and activities approved for peer review: RSGS Population Estimation comments are due May 21, 2010 to Jeanne Dye; RM 83 comments are due May 28, 2010 to Rick Billings; RGSM Population Monitoring* comments are due June 4, 2010 to Jeanne Dye; and RGSM Genetics Monitoring and Assessment comments are due June 11, 2010 to Jeanne Dye. ***All comments from any single agency should be consolidated into a single email.***

Jeanne Dye will modify the RGSM Genetics Monitoring and Assessment peer review questions after discussion at the Science workgroup (ScW) meeting (May 18, 2010) and distribute them to the CC for review.

Stacey Kopitsch will communicate the CC's recommendation for peer review of the PVA models for discussion at the next PVA meeting.

Rick Billings will communicate the CC's recommendation regarding the Albuquerque A&R Report for discussion at the next Habitat Restoration workgroup (HRW) meeting.

Next meeting – May 26, 2010 10:00 am-4:00 pm @ Reclamation

*Update: The timing of the peer review for this activity may change based on the outcome of another ScW study, and will be further discussed within the ScW and CC.

Meeting Summary

- **Introductions and Agenda Approval** - Amy Louise brought the meeting to order and introductions were made around the table. A quorum was present. Discussions on agency participation in the Database Management System workgroup (DBMS) and the Strengths Finder books were added to the agenda.

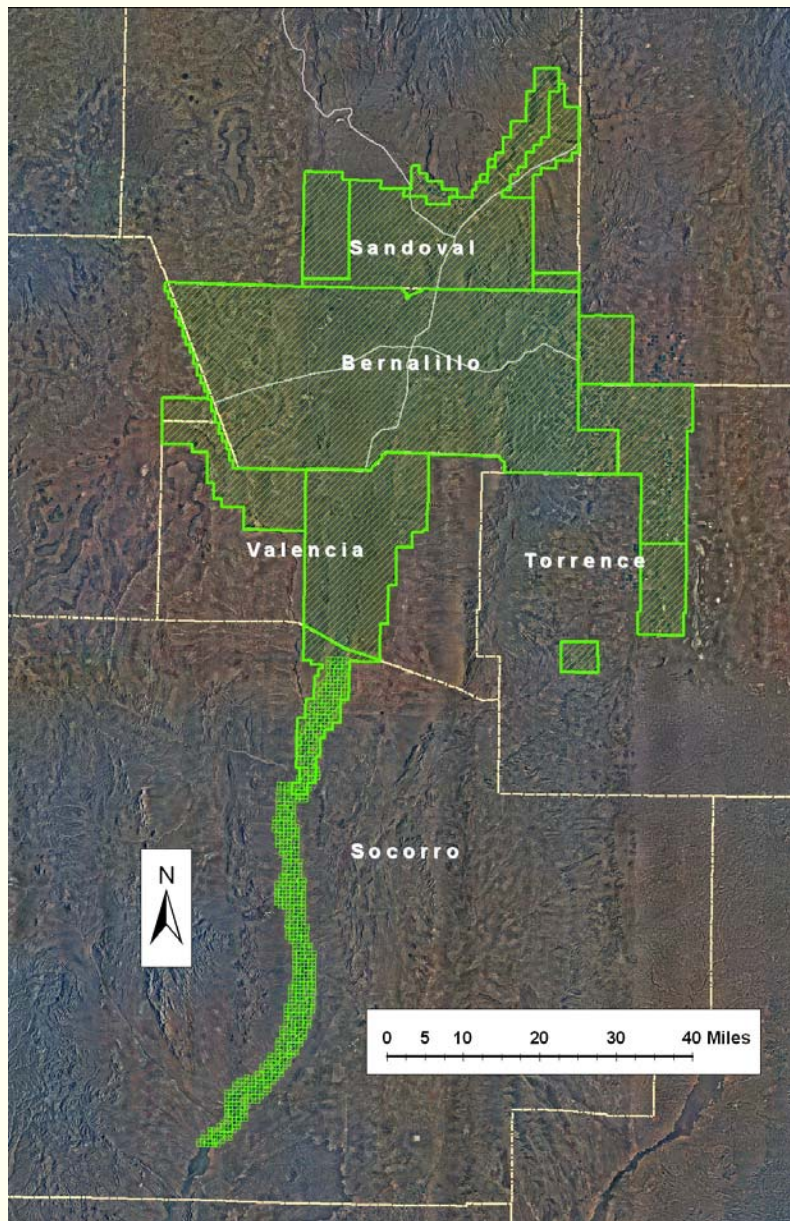
- **Action Item Review** – All April 28, 2010 action items were completed.
- **Approval of 04/28/10 CC meeting summary** – The April 28, 2010 CC meeting summary was approved with no changes.
- **Ortho-Photography and LiDAR Presentation** – The CC was shown a presentation, “*2010 Mid Rio Grande LiDAR/Ortho-Photography Project*” that summarized an Ortho-Photography and LiDAR data collection project. The project is a joint effort by the Mid-Region Council of Governments (MRCOG), U.S. Army Corps of Engineers (USACE)/ MRGES Collaborative Program, and U.S. Geological Survey (USGS). The reach between Cochiti and Mile 60 will be the area for which data is collected. The CC saw examples of products that will result from the project. Data has been collected except in areas with snow coverage. LiDAR products should be available in late August or early September of 2010, and Ortho-Photography products are not scheduled to be available until December 2010.
- **Review Program By-Laws concerning signatories** – Sixteen signatories are currently participating in the Program. There are 4 slots open for agencies interested in becoming a signatory; there is not currently a Program signatory that represents a significant portion of the environmental community.
- **Agency Participation in the DBMS** –The CC discussed agency participation in the DBMS. It was stated that all signatories need to have consistent representation on the DBMS workgroup.
- **DBMS draft charters and 2010 Work plan** - The CC approved the draft Charter and 2010 Work plan for the DBMS workgroup. FWS participation in the workgroup was requested and will be further discussed by Yvette McKenna and Lori Robertson.
- **Population Viability Analysis (PVA) draft charter** - The Population Viability Analysis (PVA) draft Charter was approved with the change that the PVA will disband after the BA/BO(s) consultation process.
- **Review/Approve/Revise draft Peer Review Questions** – At a previous meeting the CC recommended the Population Estimation report for peer review and requested that workgroups submit suggestions and draft peer review questions for additional reports. The reports suggested by the workgroups for peer review were RGSM Population Monitoring, RGSM Genetics Monitoring and Assessment, RM 83, and Albuquerque Reach A&R.
 - The current budget for peer review would allow for all the above mentioned reports to undergo peer review. The CC discussed which of the reports would benefit from peer review.
 - The RM 83 report would greatly benefit from peer review and was proposed by the HRW as their priority project.
 - It was asked if the Population Estimation, Population Monitoring, and Genetics reports should be reviewed simultaneously. Because the projects are at different stages, the reports will be peer reviewed independently.
 - Silvery minnow population monitoring has been peer reviewed in the past and could benefit from additional peer review. It was recognized that there is a long-standing record of data collected following a standard methodology. This serves as a base level of population monitoring and is important to continue into the future. Peer review may identify areas for improvement and these could potentially be implemented in addition to the base level.

- The RGSM Genetics Monitoring and Assessment peer review will be a review of the genetics program and its history, consisting of a review of several documents.
- The RSGS Population Estimation, RM 83, RGSM Population Monitoring, and the RGSM Genetics Monitoring and Assessment reports were recommended by the CC for peer review.
- The CC was briefed that the two PVA models are scheduled to be functional by the end of September. A suggestion was made that the PVA models should undergo peer review. Peer review of the PVA models would not interfere with evaluation of the Biological Assessments. The CC recommends that the two PVA models undergo peer review once functional formats/outputs become available. Stacey Kopitsch will communicate the CC's recommendation for peer review of the PVA models for discussion at the next PVA meeting.
- The Albuquerque Reach A&R report is a low priority for peer review. The CC recommended that the Peer Review Report from the San Acacia A&R Report be used to evaluate the draft Albuquerque A&R Report. Rick Billings will communicate the CC's recommendation regarding the Albuquerque A&R Report for discussion at the next Habitat Restoration workgroup (HRW) meeting.
- The CC prioritized the items for peer review.
 1. RGSM Population Estimation
 2. RM 83
 3. RGSM Population Monitoring
 4. RGSM Genetics Monitoring and Assessment
 5. PVA models
- The CC will review and submit comments on the draft peer review questions for the reports approved for peer review. A timeline of due dates for comments on the draft peer review questions was created.
 - RSGS Population Estimation comments are due May 21, 2010 to Jeanne Dye.
 - RM 83 comments are due May 28, 2010 to Rick Billings.
 - RGSM Population Monitoring comments are due June 4, 2010 to Jeanne Dye.
 - RGSM Genetics Monitoring and Assessment comments are due June 11, 2010 to Jeanne Dye.
 - ***All comments from any single agency should be consolidated into a single email.***
- **Strengths Finder Books** – Copies of the Strengths Finder books were distributed to primary and alternate CC members. The CC was reminded that the Strengths Finder workshop is scheduled for August 20, 2010; attendees are requested to set the entire day aside for the workshop. Workshop attendees should complete an on-line questionnaire that identifies an individual's top 5 strengths; the first section of the Strengths Finder book and a book insert explain what to expect and how to log on at the Strengths Finder website. Reading the book and completing the website questionnaire should be completed by mid-July.

CC Meeting Attendees**12 May 2010**

NAME	AFFILIATION	PHONE NUMBER	EMAIL ADDRESS
Monika Mann	COE	342-3250	Monika.mann@usace.army.mil
Amy Louise	ISC	383-4057	amy.louise@state.nm.us
Jericho Lewis	Reclamation	462-3622	jlewis@usbr.gov
Rick Billings	ABCWUA	796-2527	rbillings@abcwua.org
Lori Robertson (phone)	FWS	761-4710	lori_robertson@fws.gov
Nathan Schroeder	Pueblo of Santa Ana	771-6719	nathan.schroeder@santaana- nsn.gov
Susan Bittick	USACE	342-3397	Susan.M.Bittick@usace.army.m il
Ann Moore (phone)	NMAGO	222-9024	amoore@nmag.gov
Susan Kelly	UNM	277-0514	skelly@law.unm.edu
Hector Garcia	Reclamation	462-3550	hgarcia@usbr.gov
Julie Alcon	USACE	342-3281	Juli.a.alcon@usace.army.mil
Jeanne Dye	Reclamation	462-3564	jdye@usbr.gov
Terina Perez	COA	848-7174	tlperez@cabq.gov
Stacey Kopitsch	FWS	761-4737	stacey_kopitsch@fws.gov
Yvette McKenna	Reclamation	462-3640	ymckenna@usbr.gov
Jen Bachus	FWS	761-4714	Jennifer_bachus@fws.gov
Christine Sanchez	Tetra Tech	881-3188 ext. 139	christine.sanchez@tetrattech.co m

2010 Middle Rio Grande LiDAR/Ortho-Photography



In The Beginning (Circa 1923)



2010 Mid Rio Grande LiDAR/Ortho-Photography Project

- **Background of the effort**
- **Areas Covered**
- **Products to be Produced**
- **When Available**
- **Summary**



2010 Mid Rio Grande LiDAR/Ortho-Photography Project

- Background of the effort
- Areas Covered
- Products to be Produced
- When Available
- Summary



2010 Mid Rio Grande LiDAR/Ortho-Photography Project

- Partners & Roles In This Effort



- MRCOG: Northern Regional Area Contract Lead for Ortho & Lidar Collection & Contributing Partner



- Corps of Engineers/MRGES Collaborative Program: Northern Regional Area Contributing Partner & Southern Area Contract Lead



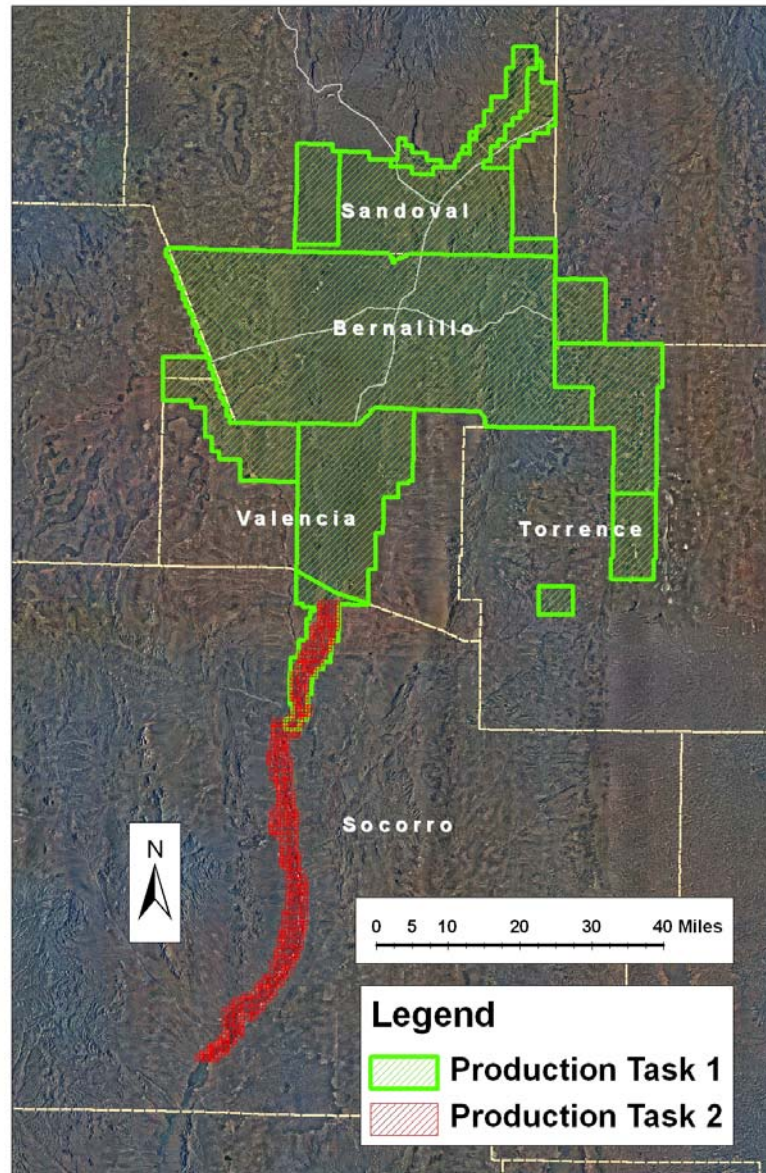
- USGS: Northern Regional Area Contributing Partner for LIDAR Collection

2010 Mid Rio Grande LiDAR/Ortho-Photography Project

- Background of the effort
- **Areas Covered**
- Products to be Produced
- When Available
- Summary

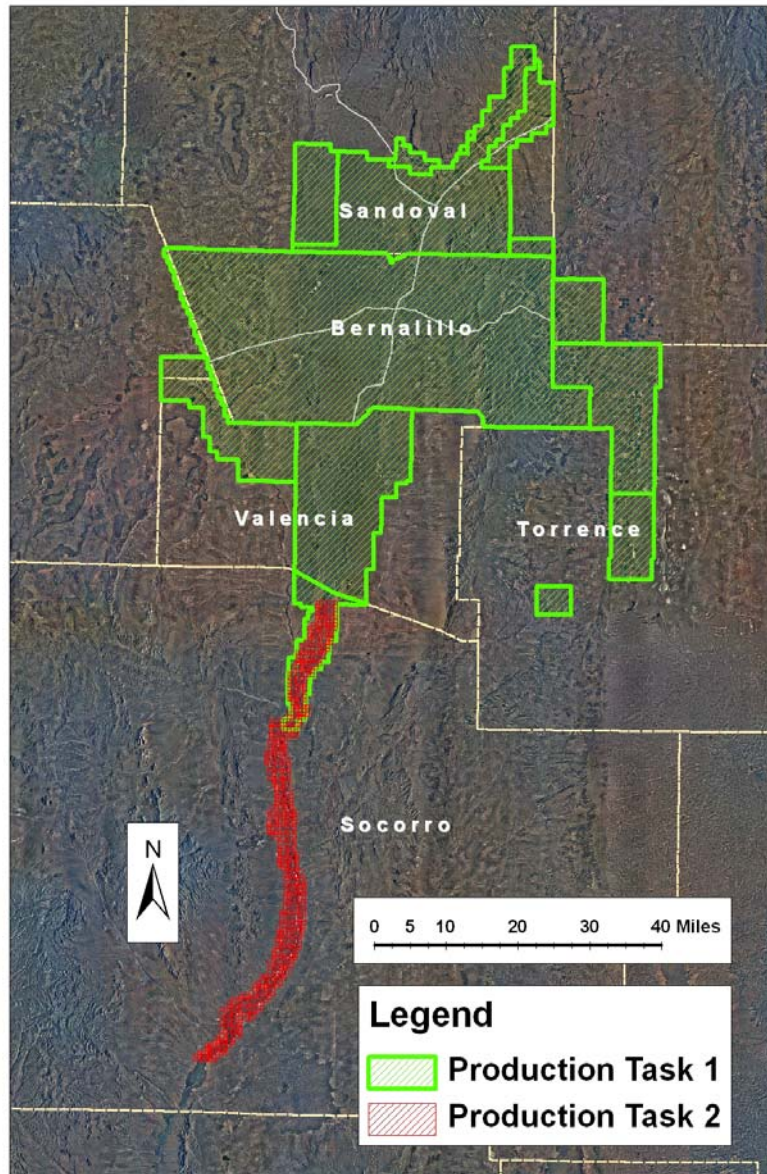


PRODUCTION TASK AREAS



- **Task 1 Northern Region: Covers River Reach from Cochiti to south of Belen (BOR Mile 138) + Metro Areas**
- **Task 2 Southern Region: Covers River Reach from south of Belen (BOR Mile 138) to just south of San Marcial (BOR Mile 60)**

PRODUCTION TASK DISTRIBUTION



Bohannon & Huston

- Task 1 Northern Region: Collection of MRCOG's area of interest (AOI)/(USACE's northern AOI) by Bohannon Huston through collaborative means and,

**WILSON
& COMPANY**
ENGINEERS & ARCHITECTS

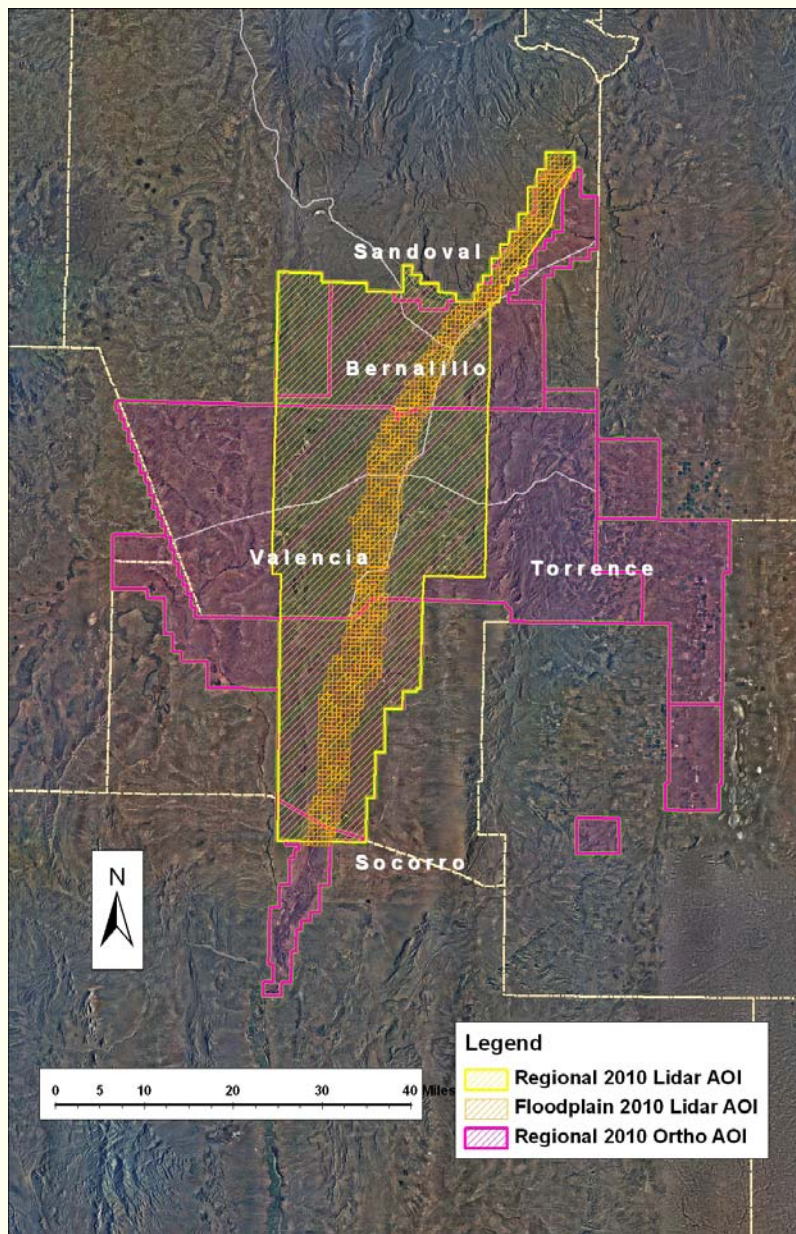
- Task 2 Southern Region: Collection of southern half of USACE's AOI through IDIQ contractor, Wilson Engineering.

2010 Mid Rio Grande LiDAR/Ortho-Photography Project

- Background of the effort
- Areas Covered
- **Products to be Produced**
- When Available
- Summary



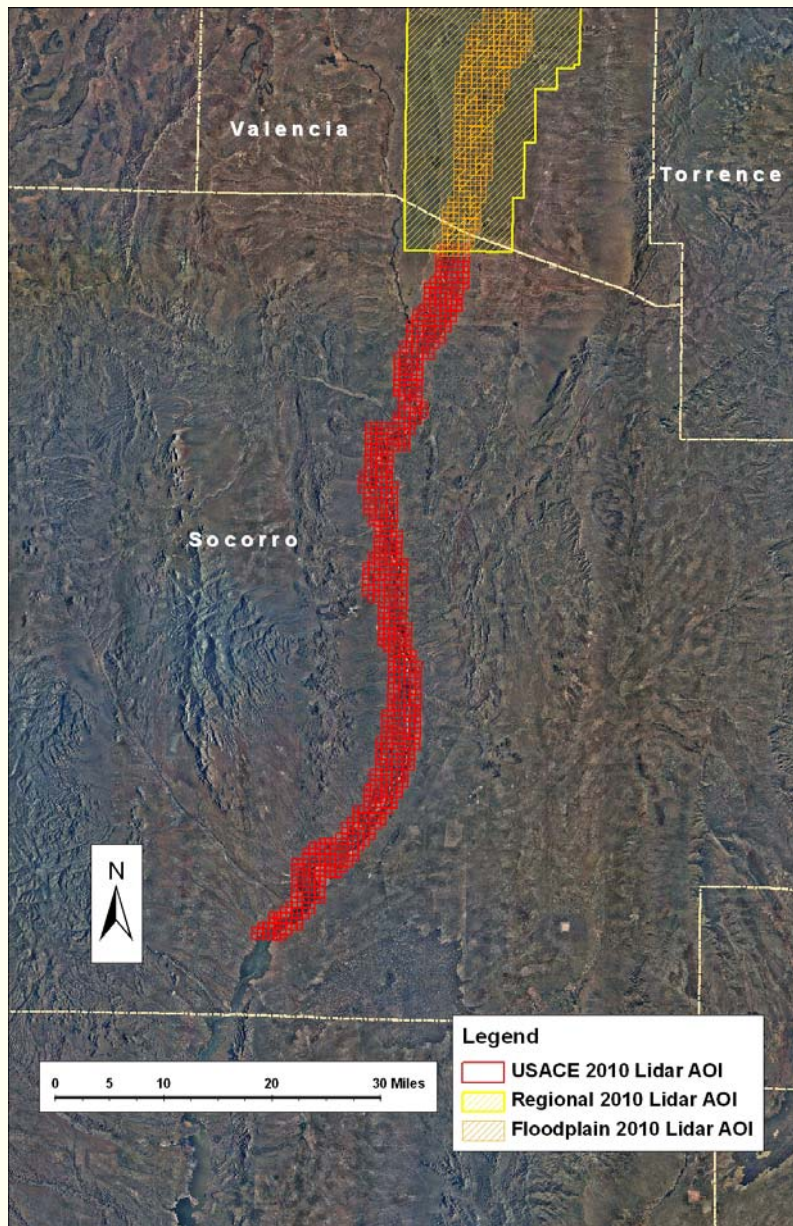
MRCOG/USACE/USGS COLLABORATIVE EFFORT



TASK 1 - NORTHERN REGIONAL TASK COMPONENTS

- Task 1a: Regional Ortho-Photography- 2,600 square miles of 6" resolution Ortho-Photography covering parts of 5 counties
- Task 1b: Regional-1,233 square miles of 2' Lidar Data
 - 2' contour equivalent Digital Elevation Model (DEM)
 - National Elevation Dataset (NED)- digital elevation dataset contribution to the USGS "National Map"
 - FEMA assessment procedures
- Task 1c: Middle Rio Grande Floodplain (~500 year)- 303 square miles
 - 1' contour equivalent Digital Terrain Model (DTM)
 - Additional break-line and surface modeling
 - Suitable for hydrologic/hydraulic modeling and geomorphic studies
 - FEMA assessment procedures

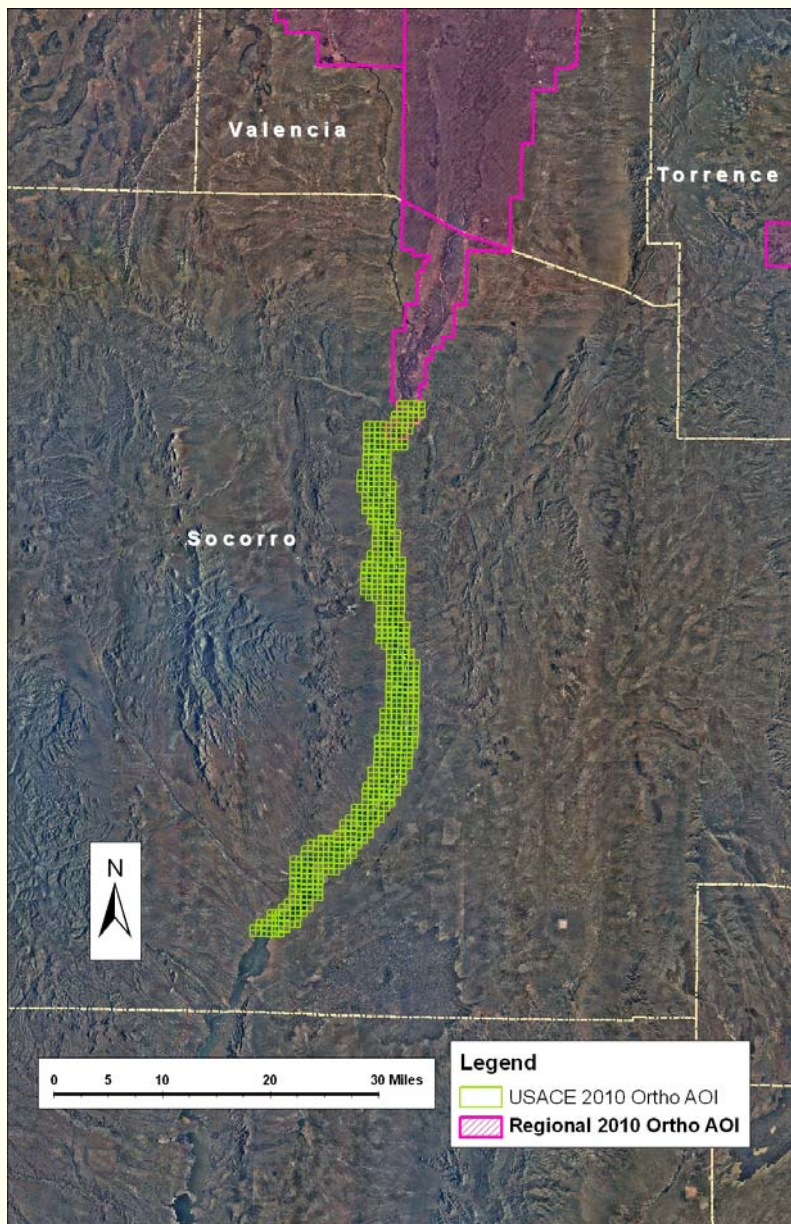
USACE LIDAR COLLECTION AREA



TASK 2 - SOUTHERN REGIONAL TASK COMPONENTS

- Task 2a: 78 miles of Floodplain (~500 year)- 280 square miles
 - 1' contour equivalent Digital Terrain Model (DTM)
 - Hill shades
 - Additional break-line and surface modeling
 - Suitable for hydrologic/hydraulic modeling and geomorphic studies
 - FEMA assessment procedures

USACE ORTHO COLLECTION AREA

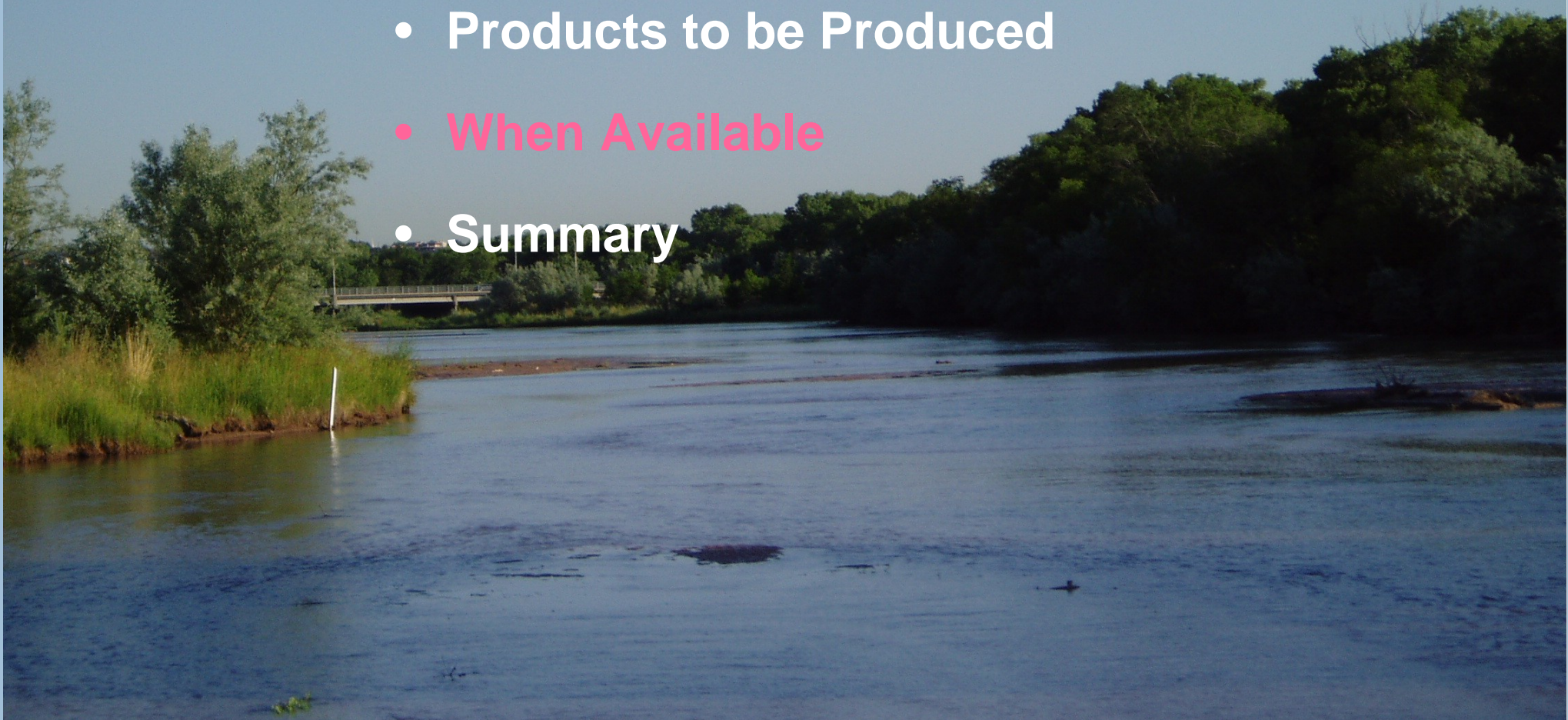


TASK 2 - SOUTHERN REGIONAL TASK COMPONENTS –cont.

- Task 2b: Ortho-Photography- 57 miles of 6" resolution Ortho-Photography

2010 Mid Rio Grande LiDAR/Ortho-Photography Project

- Background of the effort
- Areas Covered
- Products to be Produced
- When Available
- Summary



2010 Mid Rio Grande LiDAR/Ortho-Photography Project

- Background of the effort
- Areas Covered
- Products to be Produced
- When Available
- Summary

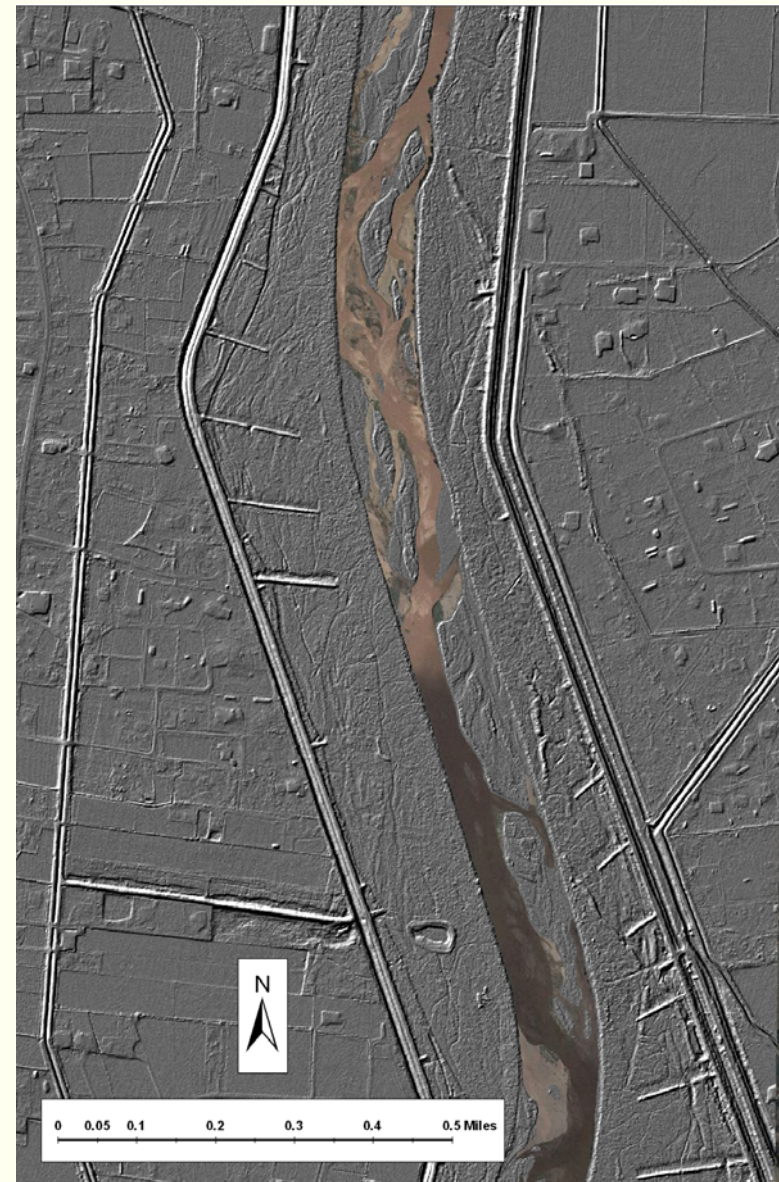
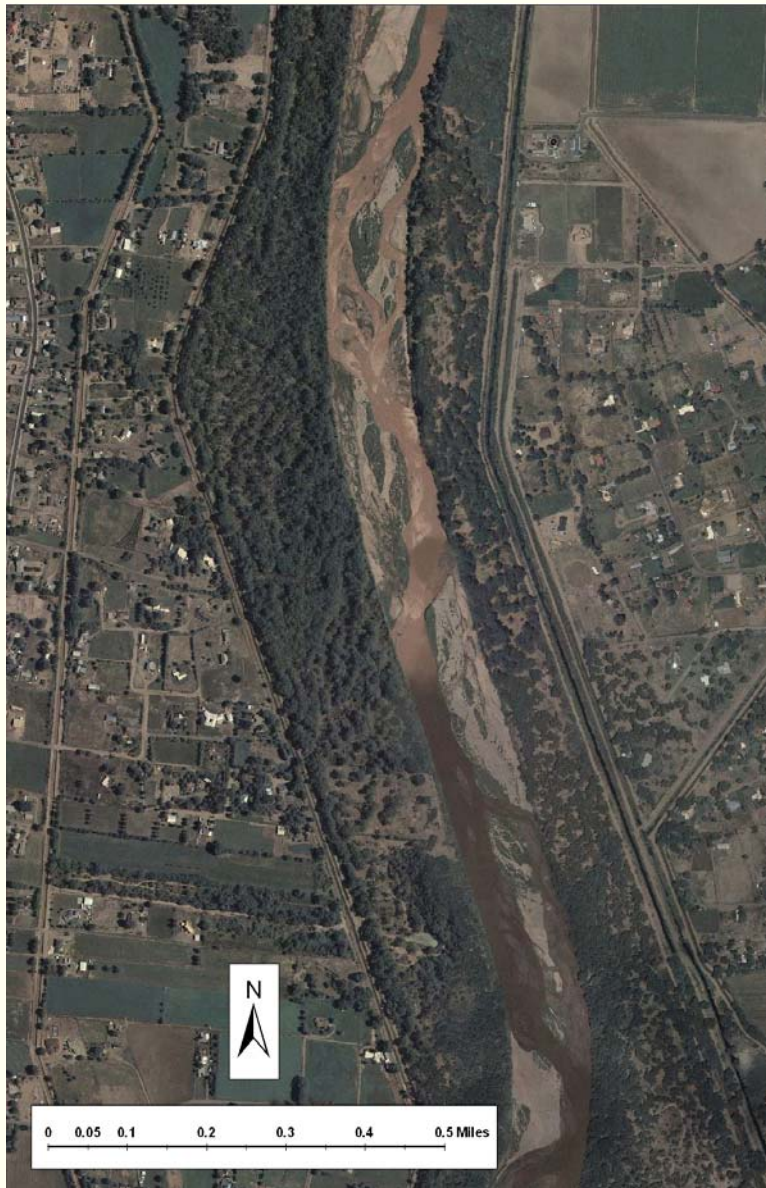


2010 Middle Rio Grande LiDAR/Ortho-Photography Summary:

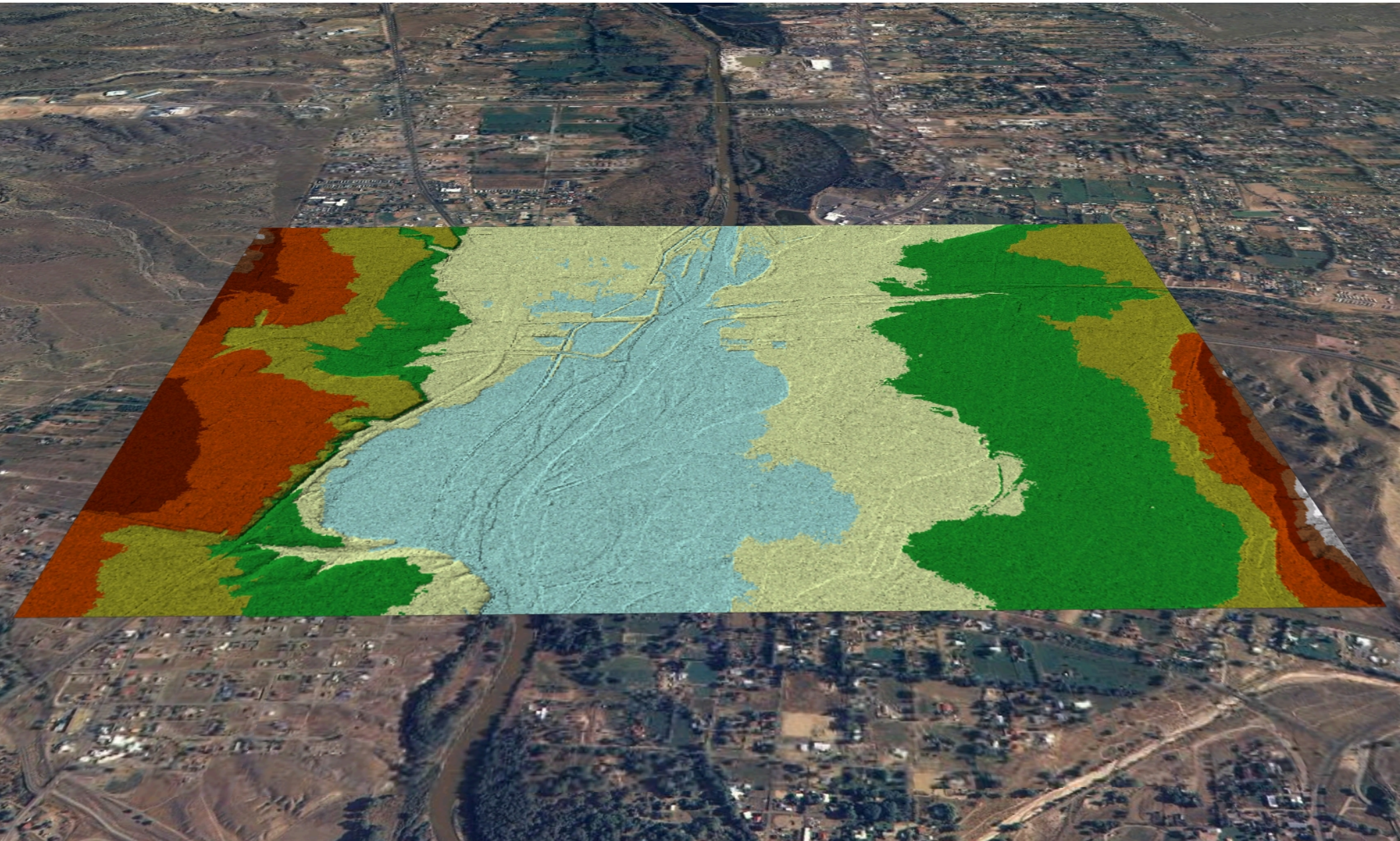
- **Product Uses**
 - **Habitat Restoration Projects**
 - **Geomorphologic Studies of the Floodway**
 - **Modeling & Floodplain Studies**
 - **Community Flood Control Projects**
 - **Levee Design**
 - **Small Community Base Mapping**
 - **ETC.**



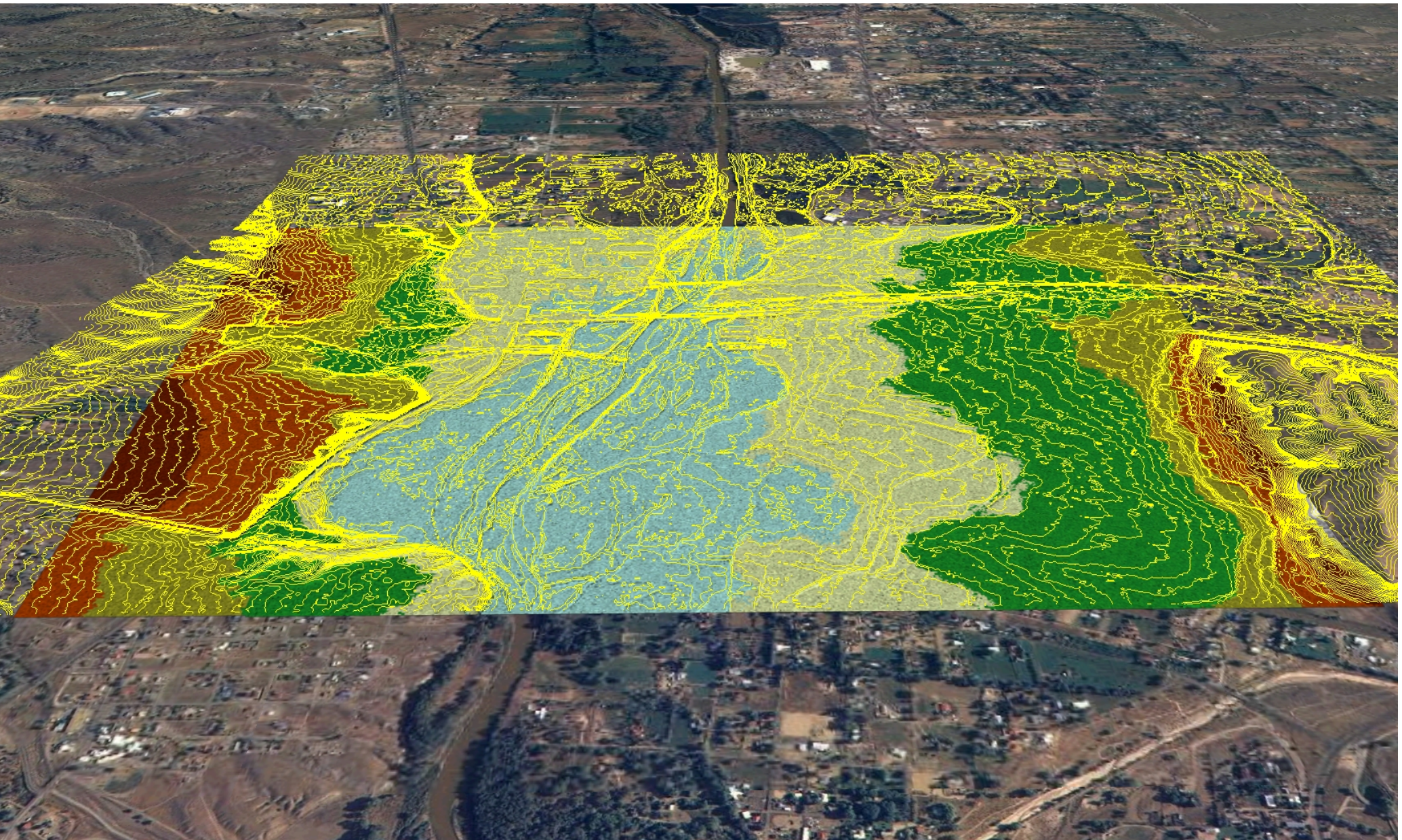
Channel Studies: Sample of 1ft. Surface Lidar Derived Hillshade



LIDAR Derived Terrain Surface



2ft. Contours Derived From Terrain Surface



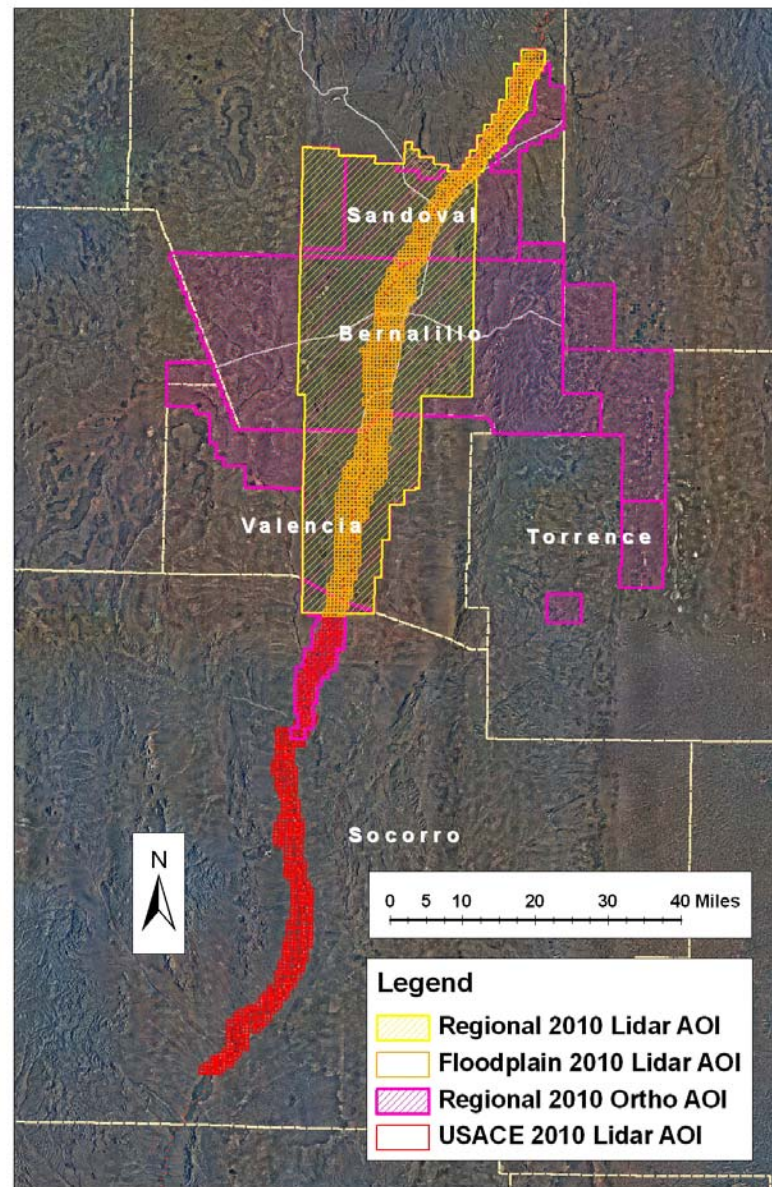
Hydrologic & Inundation Modeling



Hydrologic & Inundation Modeling



Questions?



DRAFT Criteria #1 - 2003 BIOP or Program-required Collaborative Program Activities for 2010

\$3,875 Million in Funding is Available in FY10 (Deobligated funds could increase this amount)

Contracting Method 1 awards funding through streamlined process - can be as early as March, 2010
Contracting Method 2 awards funding through an RFP or FOA process by End of August, 2010

FY10 Activity #	FY10 Projects and Activities	LTP Category	On-going?	2003 BIOP Requirement	Workgroup	Proposed FY10 Acquisition Method	FY09 Funds Provided	FY02-08 Unexpended Funds ¹	FY10 Estimated Cost	Running Total Est FY10 Cost	Date CC Rec Funding	Comments
1	USGS MRG River Gage O&M	1.3	Y	RPA A-D	SWM-1	IA mod	\$69,148	\$0	\$69,148	\$69,148	11/04/09	
3	Restoration of Experimental RGSW poles (Big Bend)	2	Y	RPA A-D	SWM-1	IA mod	\$149,690	\$57,431	\$100,000	\$165,000	11/04/09	2003 BIOP requires annual funding of 100K for this activity
4	Assessment and monitoring of RGSW genetics	2	Y	RPA A-D	SWM-1	IA mod	\$167,251	\$27,518	\$100,000	\$295,000	11/04/09	
26	FWS Augmentation and monitoring	9	Y	RPA A-D	SWM-1	IA mod	\$84,208	\$137,048	\$40,000	\$435,000	11/04/09	Funding from prior years reduced the need for FY10
27	COA Reamplification O&M	9	Y	RPA A-D	SWM-1	IA mod	\$74,460	\$22,249	\$60,000	\$605,000	11/04/09	
28	Restoration of O&M ISC naturalized refuge	9	Y	RPA A-D	SWM-1	IA mod	\$261,170	\$177,689	\$280,000	\$875,000	11/04/09	Facility increases fish propagation activities in this year
5	Implement 2-year Pilot HR Effectiveness monitoring plan	3	N	RPA S	M&T	new RFP	\$0	\$0	\$0	\$1,241,000	11/04/09	
6	San Antonio Fish Passage - complete air camp	3	Y	RPA R	HRW	BOB	\$724,578	\$0	\$219,000	\$1,460,000	11/04/09	
7	FWS RGSW Rescue efforts	4	Y	RPA 1.2.2.2	Science	IA mod	\$0	\$54,292	\$300,000	\$1,760,000	11/04/09	
8	RGSW Egg Monitoring in Canals	4	Y	RPA 2.1.2.2	Science	IA mod	\$70,345	\$37	\$19,000	\$1,789,000	11/04/09	Funds earned over from FY08 "wet" year to cover FY09 expenses
9	RGSW Spawning Monitoring	4	Y	RPA 2.2	Science	new RFP	\$92,760	\$1,910	\$100,000	\$1,899,000	11/04/09	
10	Water Quality Monitoring at Stone Bonnetts	5	Y	RPA EE	Science	IA mod	\$178,052	\$108,702	\$100,000	\$2,079,000	11/04/09	
13	Program technical & admin support - contracted	7	Y		PRAT	PRAT	\$264,665	\$23,882	\$280,000	\$2,359,000	11/04/09	Includes development of 2008 annual accomplishment report
14	CP Weirpool Holding & Maintenance	7	Y		PIO	PCOM	\$26,590	\$6,166	\$27,000	\$2,386,000	11/04/09	
39	CP Public Outreach	7	Y		PIO	CSA	\$15,000	\$0	\$15,000	\$2,401,000	11/04/09	
40	FWS Fish Biologist Program Management & Support	7	Y		PRAT	new IA	\$0	\$124,035	\$150,000	\$2,551,000	11/04/09	This individual is expected to be hired after the beginning of the fiscal year, October 1, 2009
TOTAL FOR CRITERIA 1							\$2,127,321	\$683,910	\$2,651,000			
DRAFT Criteria #2 - 2010 Activities that are Needed for new BA/BO Development												
15	URGCOM Modeling to support new HABS	6	Y		PHWA/TyD	new RFP	\$69,898	\$0	\$160,000	\$2,711,000	11/04/09	Additional model runs necessary
17	RGSW population estimation	12	Y		Science	PRAT	\$134,206	\$54,436	\$135,000	\$2,846,000	11/04/09	Need for additional data
22	Acquisition of Data for PVA models	12	Y		PVA	new RFP	\$20,000	\$0	\$38,000	\$2,884,000	11/04/09	
23	Develop adaptive management plan	12	N		PRAT	new RFP	\$0	\$0	\$50,000	\$2,934,000	11/04/09	Various activities in support of development of the plan
TOTAL FOR CRITERIA 2							\$254,204	\$54,436	\$383,000			
TOTAL FEDERAL AMOUNT CRITERIA 1 + CRITERIA 2							\$2,381,525	\$738,346	\$2,934,000			
DRAFT Criteria #3 - Workgroup Recommended Actions that Support the BIOP and/or Recovery for FY 2010												
Activities to be Considered for Funding if Additional FY10 Funds Become Available												
36	Water Resource A&R Report Finalization	Y			HRW	PRAT	\$126,631	\$1,428,093	\$350,000	\$3,282,500	11/04/09	
41	New Habitat Restoration Construction on Non-Federal lands	3	N	RPA S	HRW-1	new FOA	\$29,488	\$0	\$5,000	\$3,287,500	11/04/09	Could implement new projects if funds are available
37	San Antonio Reach ad hoc W&S activities	8	N		PRAT-1	new RFP	\$0	\$0	\$50,000	\$3,337,500	11/04/09	Public forums will be on a smaller scale
33	Independent Peer Review	12	Y		SWM-2	new RFP	\$29,960	\$0	\$100,000	\$3,437,500	11/04/09	Need will increase depending on type of services required
34	Waterbird Monitoring (climate change data inputs)	8	N		HRW-2	new FOA	\$0	\$172,902	\$250,000	\$3,687,500	11/04/09	
42	Coastal Reach Specific HR Plans on Pueblo Lands	10	N		HRW-2	new RFP	\$0	\$0	\$50,000	\$3,737,500	01/13/10	
45	Island Phase II HR Project (Design & Compliance)	3	Y		HRW	PRAT	\$125,000	\$3,100	\$50,000	\$3,787,500		
38	Habitat Restoration Design and Env Comp Services	3	N	RPA S	HRW-3	new RFP	\$0	\$0	\$150,000	\$3,937,500		
36	Reptilian Countdown Model	8	N		SWM-4	new RFP	\$0	\$0	\$150,000	\$4,087,500		
43	Development of integrated monitoring plan for W&S and fish health	11	N		Science-4	BOB/HRP	\$0	\$0	\$100,000	\$4,187,500		Under development
44	RGSW Movement Study (drying experiment)	12	N		Science-5	new RFP	\$0	\$0	\$100,000	\$4,287,500		Under development
TOTAL FOR CRITERIA 3							\$310,689	\$1,604,095	\$1,313,500			
TOTAL COMBINED FEDERAL AMOUNT							\$2,692,214	\$2,342,453	\$4,247,500			

NOTES: 1 Unexpended funds as of 9/30/09

2 On going means activity has been done in the past and needs to continue even if work needs to be re-completed