

Executive Committee Meeting
January 21, 2010

Meeting Materials:

Meeting Agenda

Meeting Minutes

Silvery Minnow Recovery Plan: Through the Lens of the Past Monitoring Data [presentation]

Status Report: Long Term Plan Development [presentation]

**Middle Rio Grande Endangered Species Collaborative Program
Executive Committee Meeting
January 21, 2010, 9:00 am to 1:00 pm
Bureau of Reclamation Rio Grande Conference Room
555 Broadway NE, Suite 100, Albuquerque, NM**

	1. Introductions and Changes to the Proposed Agenda (Dave Sabo)	<i>(5 minutes)</i>
*	2. Approval of December 17 EC Meeting Minutes (Dave Sabo)	<i>(10 minutes)</i>
	3. Jan 19 Meeting with non-federal partners (Estevan Lopez)	<i>(10 minutes)</i>
	4. Coordination Committee Report (Co-chairs)	<i>(20 minutes)</i>
*	5. Program Manager Update (Yvette McKenna) <i>Information: Workgroup updates</i> <i>Information: Revised FY09 Financial Report</i> <i>Information: Sharing Water, Building Relations course update</i> <i>Information: Meeting with UNM representatives</i> <i>Information: Program video update</i> <i>Information: LTP schedule</i>	<i>(20 minutes)</i>
	6. LTP Update (Tom Pitts) <i>Information: Comments on draft; path forward</i> <i>Information: Outline of proposed LTP implementation workshop</i>	<i>(45 minutes)</i>
	7. Update on new BA/BO ESA Consultation <i>Information: BA update (Consultation Team)</i> <i>Information: PVA/PHVA update (Jim Wilber)</i>	<i>(30 minutes)</i>
	8. BREAK	<i>(15 minutes)</i>
*	9. Proposed FY10 Program Funding (CC Co-chairs) <i>Information: Recommended project/funding changes</i>	<i>(20 minutes)</i>
	10. Public Comment	<i>(10 minutes)</i>
	11. Next Meeting: February 18, 2010	
* <i>Denotes read ahead material provided for this item</i>		

Silvery Minnow Recovery Plan: Through the Lens of Past Monitoring Data

Findings and Recommendations

January 21, 2010

SWCA
ENVIRONMENTAL CONSULTANTS

Sound Science. Creative Solutions.

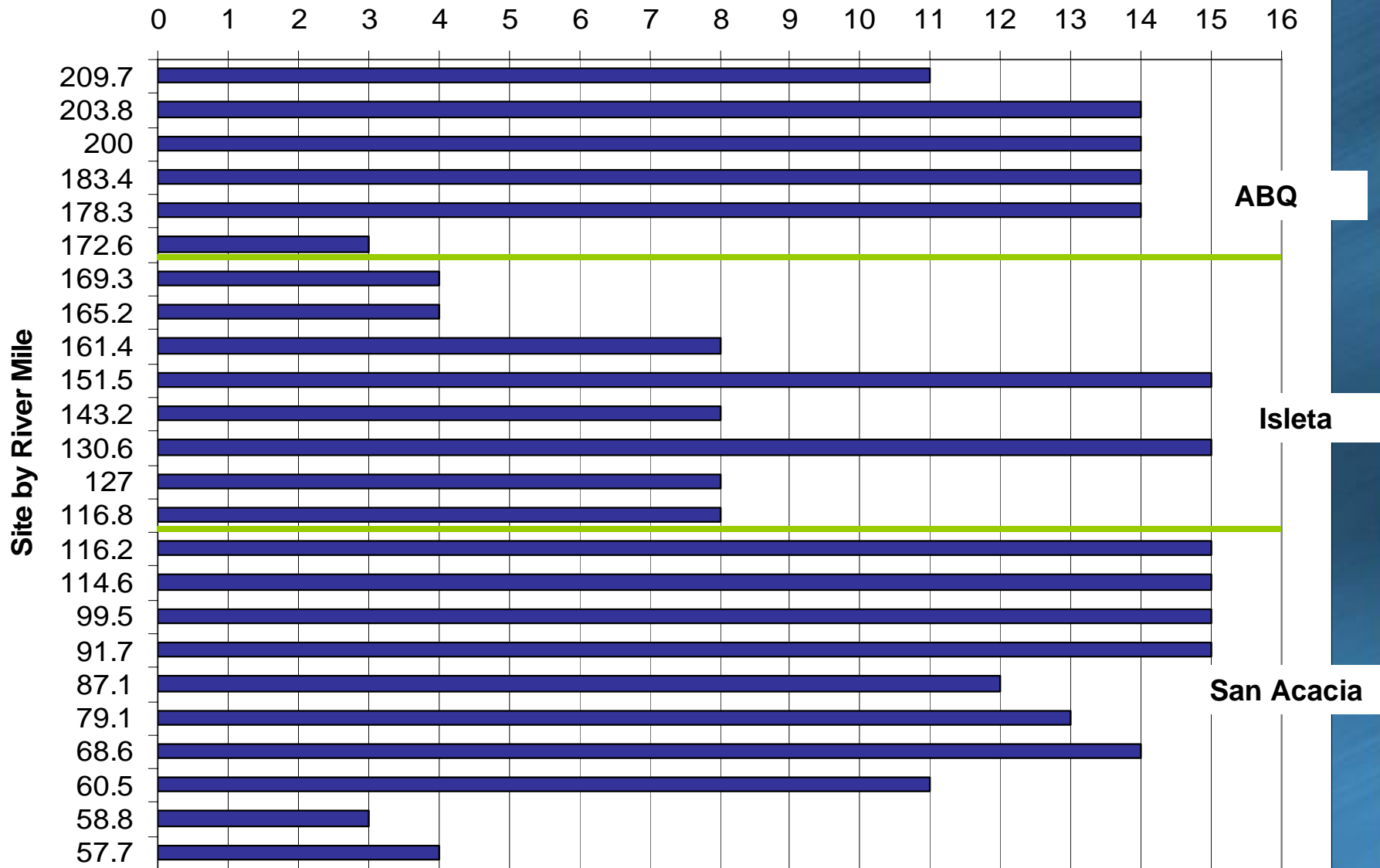
Lens of Analysis

- Past silvery minnow data 1993-2008 (July and October monitoring)
 - By sampling site
 - Young of Year (YOY) data
 - Catch per Effort (CPE) data
- 2009 Draft Revised Recovery Goals, Objectives, and Criteria
- Analyzed probability of meeting revised recovery criteria based on past 15 years.

Recovery Criteria

RECOVERY GOALS	RECOVERY OBJECTIVES	RECOVERY CRITERIA
1. Prevent extinction of silvery minnow.	1-A. A middle Rio Grande pop.	1-A-1. Silvery minnows at ¾ of sites per reach in Oct (>20 sites total).
		1-A-2. YOY at ¾ of sites per reach (>20 sites total).
	1-B. A captive pop.	1-B-1. A captive population of 50,000 to 100,000 RGSM.
2. Recover silvery minnow (downlist)	2-A. Three pops Two self-sustaining	2-A-1. CPE >5 fish/100 m² per site per reach ≥5 yrs (>20 sites).
		2-A-2. YOY at ¾ of sites per reach for ≥5 yrs (>20 sites total).
		2-A-3. Two added pops each with PE <10% within 50 yrs.
	2-B. Habitat sufficient to support three pops.	2-B-1. Base flow sufficient to generate survival for 2-A-1.
		2-B-2. Recruitment flows to generate pop growth for 2-A-1.
		2-B-3. Habitat of sufficient quantity and quality for 2-A-1.
		2-B-4. Improve water quality in occupied areas for 2-A-1.
	3. Recover Silvery minnow (delist)	3-A. Three self-sustaining populations
3-A-2. Three pops each with PE <10% within 100 yrs.		
3-B. Habitat sufficient to support three pops.		3-B-1. Base flows sufficient to generate survival for 3-A-1.
		3-B-2. Recruitment flows to generate growth for 3-A-1.
		3-B-3. Habitat of sufficient quantity and quality for 3-A-1.
		3-B-4. Improve water quality to support survival rates for 3-A-1.

No. of Sampling Visits per Site



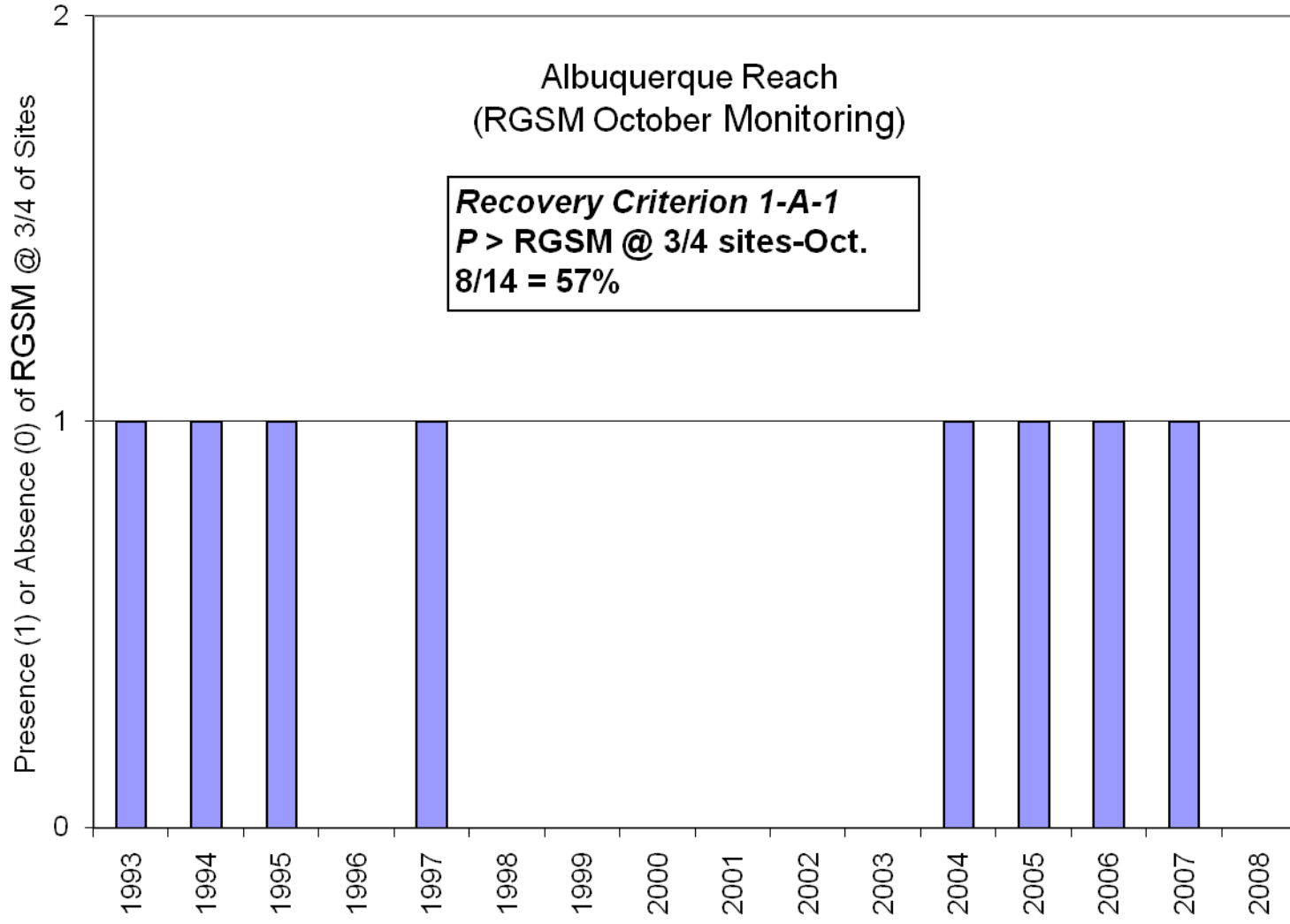
Recovery Goal 1: Prevent extinction

Probability Analysis (1993-2008)

Recovery Criteria	Demographic Criteria	ABQ	Isleta	San Acacia	All Reaches
1-A-1	Silvery minnow @ 3/4 of Sites	0.57	0.60	0.73	0.25
1-A-2	YOY @ 3/4 Sites	0.36	0.27	0.36	0.04
Recovery Goal 1	Both Criteria	0.21	0.16	0.27	0.01

Probability Analysis (2004-2008)

Recovery Criteria	Demographic Criteria	ABQ	Isleta	San Acacia	All Reaches
1-A-1	Silvery minnow @ 3/4 of Sites	0.80	0.80	0.60	0.38
1-A-2	YOY @ 3/4 Sites	0.40	0.60	0.60	0.14
Recovery Goal 1	Both Criteria	0.32	0.48	0.36	0.06



Recovery Goal 2: Downlist the Species

Probability Analysis (1993-2008)

Recovery Criteria	Demographic Criteria	ABQ	Isleta	San Acacia	All Reaches
2-A-1	CPE >5/100 m ² (5 yrs)	0.00	0.00	0.13	0.00
2-A-2	YOY @ 3/4 Sites (5 yrs)	0.00	0.00	0.00	0.00
Recovery Goal 2	Both Criteria	0.00	0.00	0.00	0.00

Probability Analysis (2004-2008)

Recovery Criteria	Demographic Criteria	ABQ	Isleta	San Acacia	All Reaches
2-A-1	CPE >5/100 m ² (5 yrs)	0.00	0.00	0.00	0.00
2-A-2	YOY @ 3/4 Sites (5 yrs)	0.00	0.00	0.00	0.00
Recovery Goal 2	Both Criteria	0.00	0.00	0.00	0.00

Recovery Goal 2: another interpretation

5-year running average (1993-2008)

Recovery Criteria	Demographic Criteria	ABQ	Isleta	San Acacia	All Reaches
2-A-1	CPE >5/100 m ² (5 yrs)	0.00	0.00	0.17*	0.00
2-A-2	YOY @ 3/4 Sites (5 yrs)	0.00	0.00	0.00	0.00
Recovery Goal 2	Both Criteria	0.00	0.00	0.00	0.00

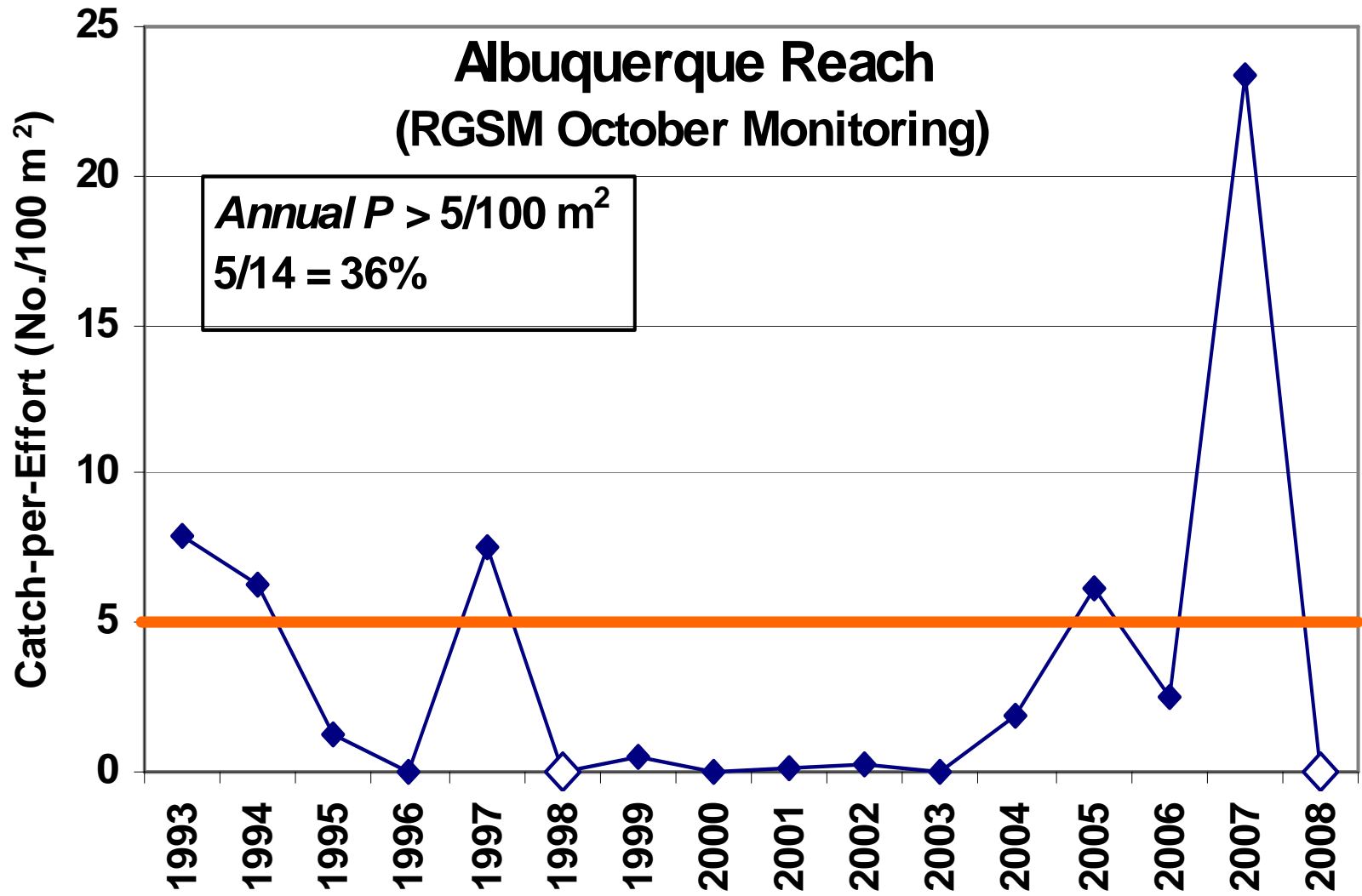
5-year running average (2004-2008)

Recovery Criteria	Demographic Criteria	ABQ	Isleta	San Acacia	All Reaches
2-A-1	CPE >5/100 m ² (5 yrs)	0.00	0.00*	0.00*	0.00
2-A-2	YOY @ 3/4 Sites (5 yrs)	0.00	0.00	0.00	0.00
Recovery Goal 2	Both Criteria	0.00	0.00	0.00	0.00

* Indicates criteria could be met in 2009



Sound Science. Creative Solutions.

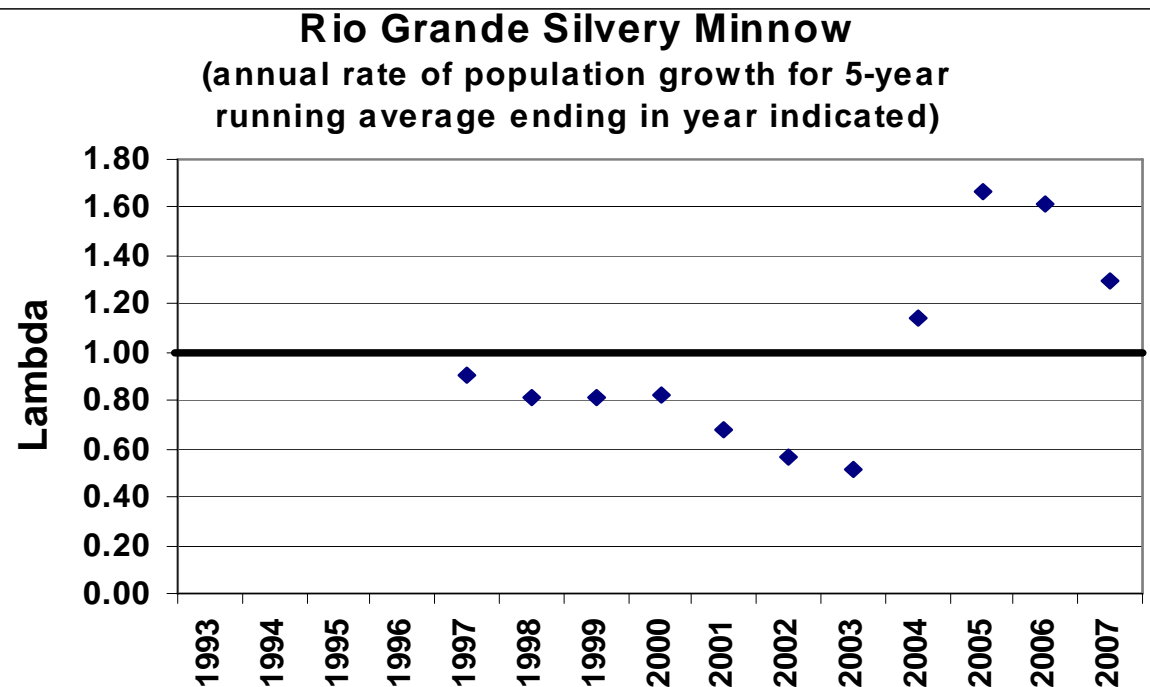
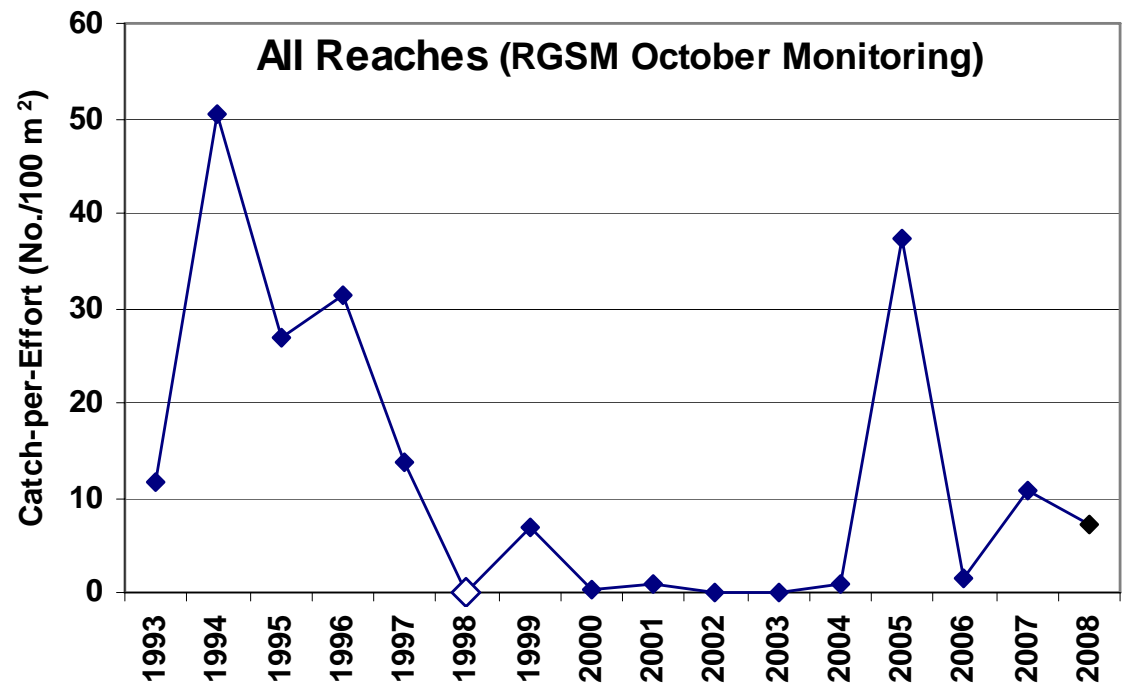


Lambda (λ)—intrinsic annual population growth rate

Mean Annual CPE →

5-Year Lambda →

λ of 1.0 = stable pop.



Recommendations

1. At least 20 sites must be monitored each year consistently
2. Possibly re-evaluate the current monitoring sites for improved distribution among reaches

River Mile	No. of Occurrences	% Exceedance
209.7	2	33.3%
203.8	6	60.0%
200	5	45.5%
183.4	1	11.1%
178.3	1	16.7%
172.6	0	0.0%
169.3	2	50.0%
165.2	2	50.0%
161.4	3	42.9%
151.5	4	30.8%
143.2	2	50.0%
130.6	1	14.3%
127	2	50.0%
116.8	1	25.0%
116.2	6	50.0%
114.6	5	41.7%
99.5	9	69.2%
91.7	7	58.3%
87.1	3	33.3%
79.1	4	50.0%
68.6	4	40.0%
60.5	3	42.9%
58.8	1	50.0%
57.7	0	0.0%

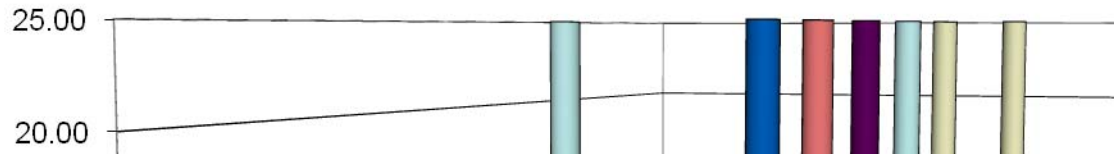
Recommendations/Observations

3. YOY age class must be monitored each year with consistent methods
4. Calculations associated with criteria should be clearly stated in Recovery Plan
5. Recovery criteria language does not seem to be based on biological significance (doesn't support clumped distribution of species)
6. >5 CPE threshold at all sites does not allow for any late season drying

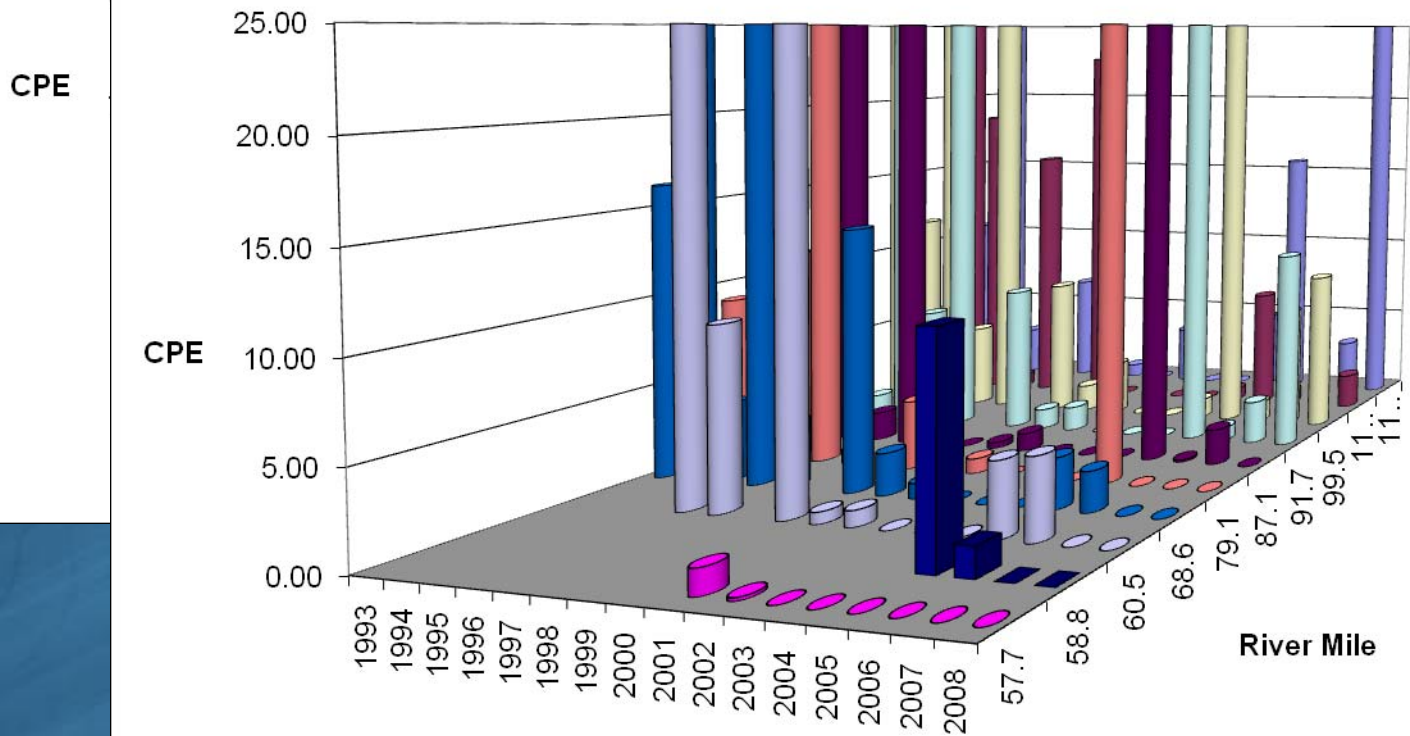
October CPE for ABQ Reach



October CPE for Isleta Reach



October CPE for San Acacia Reach



**MIDDLE RIO GRANDE COLLABORATIVE
PROGRAM**

EXECUTIVE COMMITTEE

STATUS REPORT:

LONG TERM PLAN DEVELOPMENT

JANUARY 21, 2010



TODAY'S PRESENTATION:

LTP:

- Update on Revised Approach to LTP
- Revised Schedule
- ESA Compliance Guidelines
- Feedback from Coordination Committee, January 20

TAOS RETREAT: EC Agreed on Approach to LTP Update

- **Purpose of LTP**
- **Relationship of LTP to:**
 - **Species Recovery Plans**
 - **ESA Compliance**
 - **Annual Budget and Work Plan**

ORGANIZATION OF THE LTP

- **1.0 Introduction**
- **2.0 Middle Rio Grande Collaborative Program**
- **3.0 Long Term Plan**
- **4.0 Relationship to Species Recovery Plans**
- **5.0 The Long Term Plan and ESA Compliance**
- **6.0 Program Elements**
- **7.0 Program Priorities, Activities, and Schedule**

7.0 PROGRAM ACTIVITIES

7.1 Physical Habitat Restoration and Management

- A. Silvery Minnow**
- B. Southwest Willow Flycatcher**
- C. Multi-species**

7.2 Water Management

- A. Silvery Minnow**
- B. Southwest Willow Flycatcher**
- C. Multi-species**

7.3 Predator Control

- A. Silvery Minnow**
- B. Southwest Willow Flycatcher**
- C. Multi-species**

7.0 PROGRAM ACTIVITIES

7.4 Population Augmentation/Propagation (RGSM only)

A. Silvery Minnow

7.5 Water Quality Management (RGSM only)

A. Silvery Minnow

7.6 Research, Monitoring, and Adaptive Management

A. Silvery Minnow

B. Southwest Willow Flycatcher

C. Multi-species

7.7 Policies and Laws

A. Silvery Minnow

B. Southwest Willow Flycatcher

C. Multi-species

- 7.8 Public Outreach

7.9 Program Management

LTP STATUS

- **Activities to date (December 7 in draft) included only activities from FY08, FY09, and FY10**
- **Program activities from 2001-2007 need to be added**
- **Considerable difficulty in describing and categorizing these activities due to inconsistencies in documentation**

NON-PROGRAM ACTIVITIES

- **Coordination Committee advised that “non-Program” activities “benefitting species” should be included**
- **List provided through 2006**

NON-PROGRAM ACTIVITIES

(cont)

- **65 Projects**
- **2006 Cost: \$19.6 Million++**
- **By federal, state, local agencies, tribes, NGOs**
- **No descriptions available**
- **Not updated since 2006**

FUTURE ACTIVITIES

- **Current draft does not include future activities.**
- **Future activities are key to defining activities providing ESA compliance.**
- **LTP will focus on identifying future activities**
 - **for the next 5-7 year period**
 - **that support recovery of the species and ESA compliance by the Program.**

CONCLUSIONS

- **Current level and availability of documentation does not allow completion of LTP on original schedule**
- **Additional effort and time will be required to develop documentation of 2001-2010 Program and Non-Program activities**
- **Current schedule cannot be met**

CONCLUSIONS (cont.)

- **Identification of future activities consistent with recovery plans will require:**
 - **Understanding of past activities to benefit species**
 - **Working with the Coordination Committee to identify future Program activities**

CONCLUSIONS (cont.)

- **Approach needs to be restructured:**
 - **Staff work needed to document past activities**
 - **Future activities identified with Coordination Committee**

CONCLUSIONS (cont.)

- Meetings with:
 - Executive Committee to report on significant milestones and seek input
 - Coordination Committee on CC's regular schedule
 - Non-feds: Milestone meetings in conjunction with Executive Committee meetings

CONCLUSIONS (cont.)

- Schedule:
 - Schedule will be adjusted
 - Completion target: likely about July 30
 - Timely regarding consideration of LTP for ESA compliance when developing new BiOp

ESA COMPLIANCE (cont.)

- **At Taos, discussed need for procedures describing ESA compliance**
- **Provides relationship among:**
 - the Program and ESA compliance,**
 - LTP,**
 - role of the Service, and other Program partners**

ESA COMPLIANCE

- **December 7 LTP provides ESA compliance draft**
- **Draft being reviewed by Region 2**
- **Available to CC/EC soon for comment**

ESA COMPLIANCE (cont.)

- ESA Compliance:
 - Applies to BOs on individual projects or programmatic
 - FWS first considers LTP activities for providing compliance

ESA COMPLIANCE (cont.)

–If LTP can't serve -

- FWS identifies new activities needed in LTP**
- Program decides: do/don't do**
- If can't do, back to Project sponsors**

–Service assesses compliance annually

COORDINATION COMMITTEE REVIEW JANUARY 20

- **Comments of Coordination Committee**