

RECEIVED

DEC 4 1986

SURVEY DIVISION

STATE OF OKLAHOMA  
DEPARTMENT OF HIGHWAYS  
SURVEY DIVISION

Survey Division  
Form No. 16  
Rev. Dec. 2, 1974

FLOOD INFORMATION FORM

To be used in obtaining and transmitting flood water elevations for Survey Division office record files. This information to be obtained by all Chiefs of Party or others in their vicinity in times of unusual high water, or at any time available from a reliable source. The elevations can be recorded by level reading, by measurement from bridge floor, in relation to a house, above roadbed or any other dependable, clear manner that fits the situation, the highest order possible to be used. Separate report to be made on each crossing or place obtained.

County Wagoner Date highwater occurred October 1, 1986

Highway number US 64 Name of stream Concharty Creek

Direction and distance from nearest town, village or store Approx. 0.4 mile southeast  
of Stone Bluff, Oklahoma.

Section, Township and Range Section 8, T16N, R15E

Description of Location Located in the SE4NE4 just south of Stone Bluff Baptist Church

Elevation \_\_\_\_\_ Source of levels \_\_\_\_\_

Method obtained Fennel Level Date obtained October 6, 1986

Did it appear to be  normal  medium  extreme  do not know

Was highwater mark obtained from actual water, drift, local resident, U. S. Engineers, etc.? Actual water marks and residue.

Explanatory Remarks Water was 2.7 feet below top of parapet wall at the southwest  
corner of bridge.

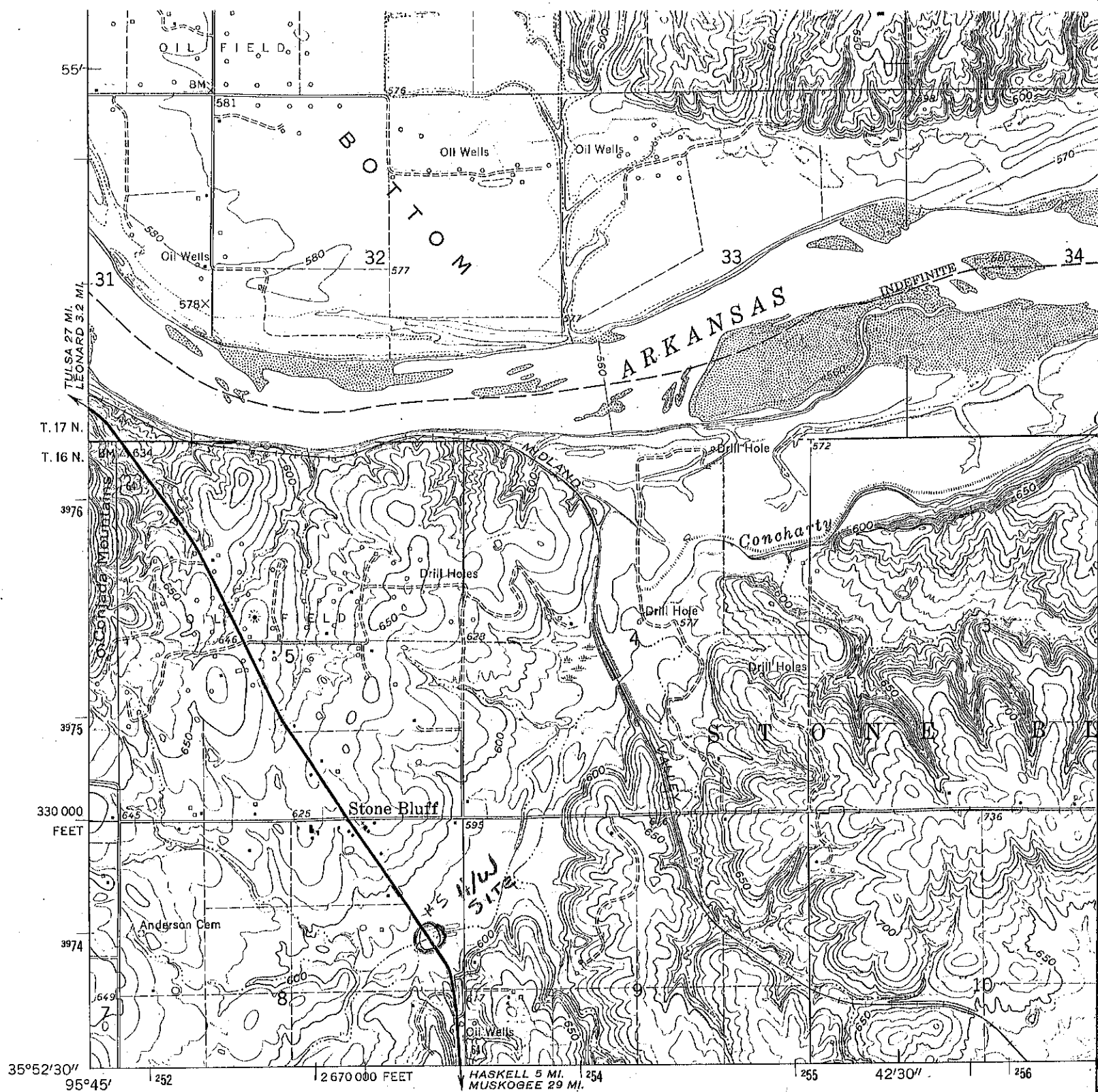
Location to be shown on back of this sheet as a check.

Field Note: To be sent to  
Survey Engineer

*James Wayne Dejeu*  
Location Engineer

October 9, 1986  
Date

LOCATION No. 32



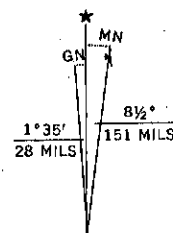
Mapped, edited, and published by the Geological Survey

Control by USGS and USC&GS

Topography by photogrammetric methods from aerial photographs taken 1962. Field checked 1963

Polyconic projection. 1927 North American datum  
 10,000-foot grid based on Oklahoma coordinate system, north zone  
 1000-meter Universal Transverse Mercator grid ticks, zone 15, shown in blue

Fine red dashed lines indicate selected fence and field lines where generally visible on aerial photographs. This information is unchecked



UTM GRID AND 1963 MAGNETIC NORTH DECLINATION AT CENTER OF SHEET

FOR SALE BY U. S. A FOLDER D

SEE 1:125,000