



OKLAHOMA DEPARTMENT OF TRANSPORTATION
SURVEY DIVISION

FLOOD INFORMATION FORM

Division #:	1 X 2 <input type="checkbox"/> 3 <input type="checkbox"/> 4 <input type="checkbox"/> 5 <input type="checkbox"/> 6 <input type="checkbox"/> 7 <input type="checkbox"/> 8 <input type="checkbox"/>
County:	Wagoner
Date Highwater occurred:	4/10/ 2008
Highway Number:	SH 51
Name of Stream:	Unknown
Direction and distance from nearest town, or highway junction	2.0 miles NW of the jct. of SH 72 and SH51
Section, Township, Range:	Section 35 T-18-N, R-15-E
Description of Location:	
Highwater Elevation:	646.88
Level Datum & Source:	NAVD 88 Datum
Method used:	RTK
Date Elevation Obtained:	4/10/ 2008
Apparent Magnitude:	Normal <input type="checkbox"/> Medium X Extreme <input type="checkbox"/> Don't Know <input type="checkbox"/>
Was Highwater Mark obtained from actual water, drift, local resident, or other source?	Drift
Explanatory Remarks:	

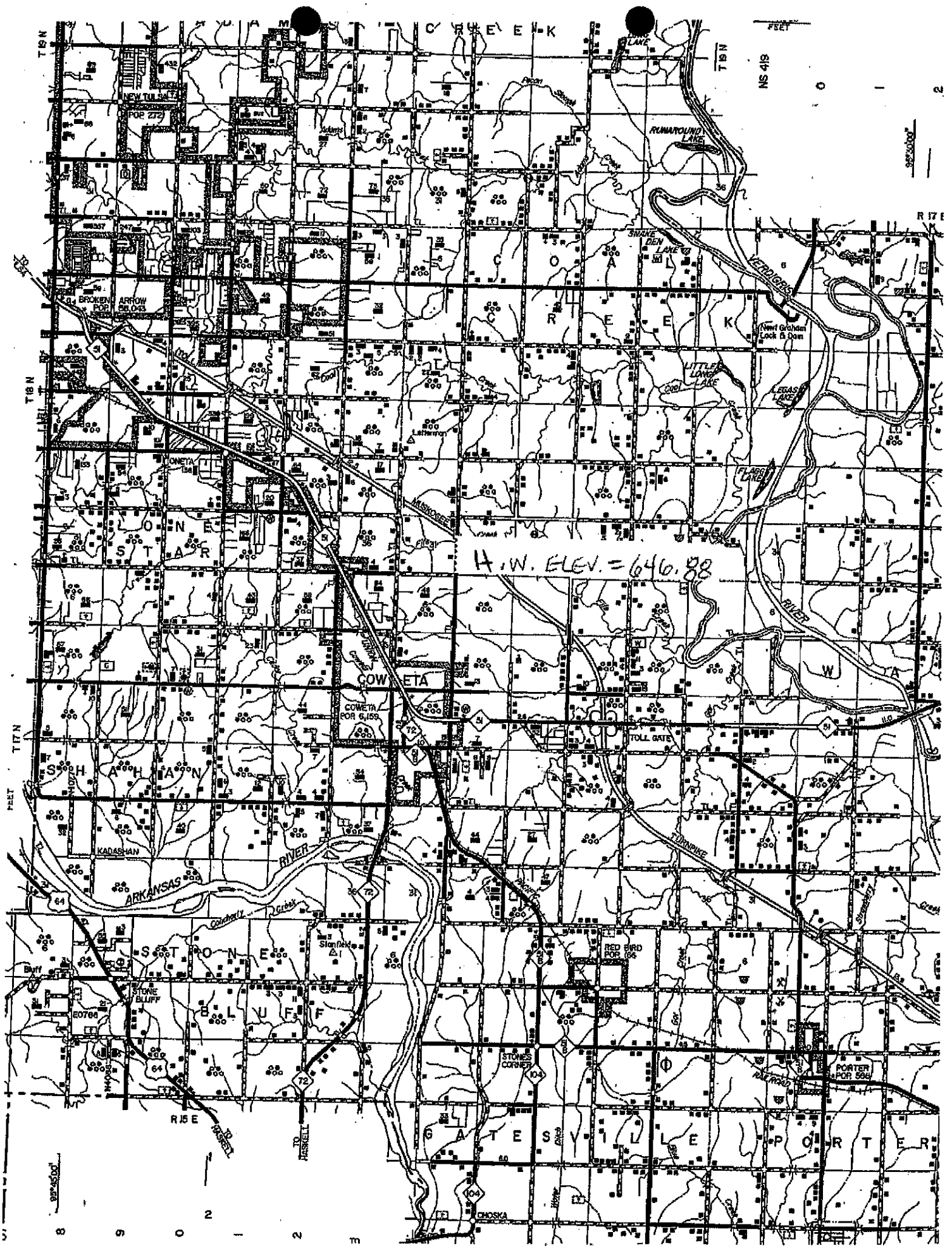
Note: Show Vicinity Map on back of form

Name (signature) _____

Name (Printed)

Date: 4/15/2008


Darin K. Stratton



H.W. ELEV. = 640.88

COWETA

SETON

BLUFF

STONES CORNER

PORTER

ATKINSVILLE

PORTER

GOSHKA

T 19 N

T 18 N

T 17 N

T 16 N

T 15 N

T 14 N

T 13 N

T 12 N

T 19 N

T 18 N

T 17 N

T 16 N

T 15 N

T 14 N

T 13 N

T 12 N

R 17 E

R 16 E

R 15 E

R 14 E

R 13 E

R 12 E

R 11 E

FEET

NS 418

0

1

2

8253000

8253000

8

9

0

1

2

m

R 15 E

TO HASKELL

ATKINSVILLE

PORTER

PORTER

PORTER

GOSHKA

ATKINSVILLE

PORTER

PORTER

PORTER

PORTER

ATKINSVILLE

PORTER

PORTER

PORTER

PORTER

PORTER

STONES CORNER

PORTER

PORTER

PORTER

PORTER

PORTER

SETON

PORTER

PORTER

PORTER

PORTER

PORTER

ARIZONA

PORTER

PORTER

PORTER

PORTER

PORTER

SOUTH ARIZONA

PORTER

PORTER

PORTER

PORTER

PORTER

COWETA

PORTER

PORTER

PORTER

PORTER

PORTER

ARIZONA

PORTER

PORTER

PORTER

PORTER

PORTER

MONETA

PORTER

PORTER

PORTER

PORTER

PORTER

BROKEN POINT

PORTER

PORTER

PORTER

PORTER

PORTER

ARROW POINT

PORTER

PORTER

PORTER

PORTER

PORTER

NEW TULSA

PORTER

PORTER

PORTER

PORTER

PORTER

POE 277

PORTER

PORTER

PORTER

PORTER

PORTER

CREEK

PORTER

PORTER

PORTER

PORTER

PORTER

CREEK

PORTER

PORTER

PORTER

PORTER

PORTER

GOSHKA

ATKINSVILLE

PORTER

PORTER

PORTER

PORTER

SETON

PORTER

PORTER

PORTER

PORTER

PORTER

ARIZONA

PORTER

PORTER

PORTER

PORTER

PORTER

SOUTH ARIZONA

PORTER

PORTER

PORTER

PORTER

PORTER

COWETA

PORTER

PORTER

PORTER

PORTER

PORTER

ARIZONA

PORTER

PORTER

PORTER

PORTER

PORTER

MONETA

PORTER

PORTER

PORTER

PORTER

PORTER

BROKEN POINT

PORTER

PORTER

PORTER

PORTER

PORTER

ARROW POINT

PORTER

PORTER

PORTER

PORTER

PORTER

NEW TULSA

PORTER

PORTER

PORTER

PORTER

PORTER

POE 277

PORTER

PORTER

PORTER

PORTER

PORTER

CREEK

PORTER

PORTER

PORTER

PORTER

PORTER

CREEK

PORTER

PORTER

PORTER

PORTER

PORTER

GOSHKA

ATKINSVILLE

PORTER

PORTER

PORTER

PORTER

SETON

PORTER

PORTER

PORTER

PORTER

PORTER

ARIZONA

PORTER

PORTER

PORTER

PORTER

PORTER

SOUTH ARIZONA

PORTER

PORTER

PORTER

PORTER

PORTER

COWETA

PORTER

PORTER

PORTER

PORTER

PORTER

ARIZONA

PORTER

PORTER

PORTER

PORTER

PORTER

MONETA

PORTER

PORTER

PORTER

PORTER

PORTER

BROKEN POINT

PORTER

PORTER

PORTER

PORTER

PORTER

ARROW POINT

PORTER

PORTER

PORTER

PORTER

PORTER

NEW TULSA

PORTER

PORTER

PORTER

PORTER

PORTER

POE 277

PORTER

PORTER

PORTER

PORTER

PORTER

CREEK

PORTER

PORTER

PORTER

PORTER

PORTER

CREEK

PORTER

PORTER

PORTER

PORTER

PORTER

GOSHKA

ATKINSVILLE

PORTER

PORTER

PORTER

PORTER

SETON

PORTER

PORTER

PORTER

PORTER

PORTER

ARIZONA

PORTER

PORTER

PORTER

PORTER

PORTER

SOUTH ARIZONA

PORTER

PORTER

PORTER

PORTER

PORTER

COWETA

PORTER

PORTER

PORTER

PORTER

PORTER

ARIZONA

PORTER

PORTER

PORTER

PORTER

PORTER

MONETA

PORTER

PORTER

PORTER

PORTER

PORTER

BROKEN POINT