

STATE OF OKLAHOMA
DEPARTMENT OF HIGHWAYS
PLANS AND SURVEY DEPARTMENT

FLOOD INFORMATION FORM

To be used in obtaining and transmitting flood water elevations for Plans & Survey office record files. This information to be obtained by all Chiefs of Party in their vicinity in times of unusual high water, or at any time available from a reliable source. The elevations can be recorded by level reading, by measurement from bridge floor, in relation to a house, above roadbed or any other dependable, clear manner that fits the situation, the highest order possible to be used. Separate report to be made on each crossing or place obtained.

County Rogers Date highwater occurred October 5, 1959

Highway number US 66 Name of stream Verdigris River

Direction and distance from nearest town, village or store 9 miles south of Claremore
or 2 miles north of Catoosa

Section, Township and Range Sec. 16, T-20-N, R-15-E.

Description of Location On US 66 at the Verdigris River Bridge 9 miles south of Claremore.

Method obtained Field Observation

Elevation 12.8 Ft. below N end Conc Source of levels conc pav., North end New Bridge on
Floor New Bridge on East Lane. East lane traffic.

Was highwater mark obtained from actual water, drift, local resident, U. S. Engineers, etc? From water and silt marks left on west lane pavement after water had receded .3 of a ft.

Explanatory Remarks High-ater elevation obtained in the field on Oct. 5, 1959 by Rees Day Moran, Jr., Chief of Party and Gale Buck McMurphy, Rodman.
Hi-Water reached its highest level at noon Oct. 5, 1959 however the West Lane of traffic was blocked for a week. The east lane was used for both lanes of traffic.

Location to be shown on back of this sheet as a check.

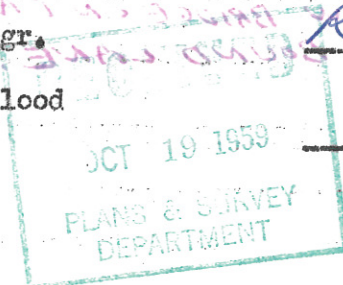
Field Note: To be sent to Engr. of Plans & Survey (1 copy).

Office Note: To be filed in Flood Information by Counties.

Rees Day Moran, Jr.
Chief of Party

October 17, 1959

Date



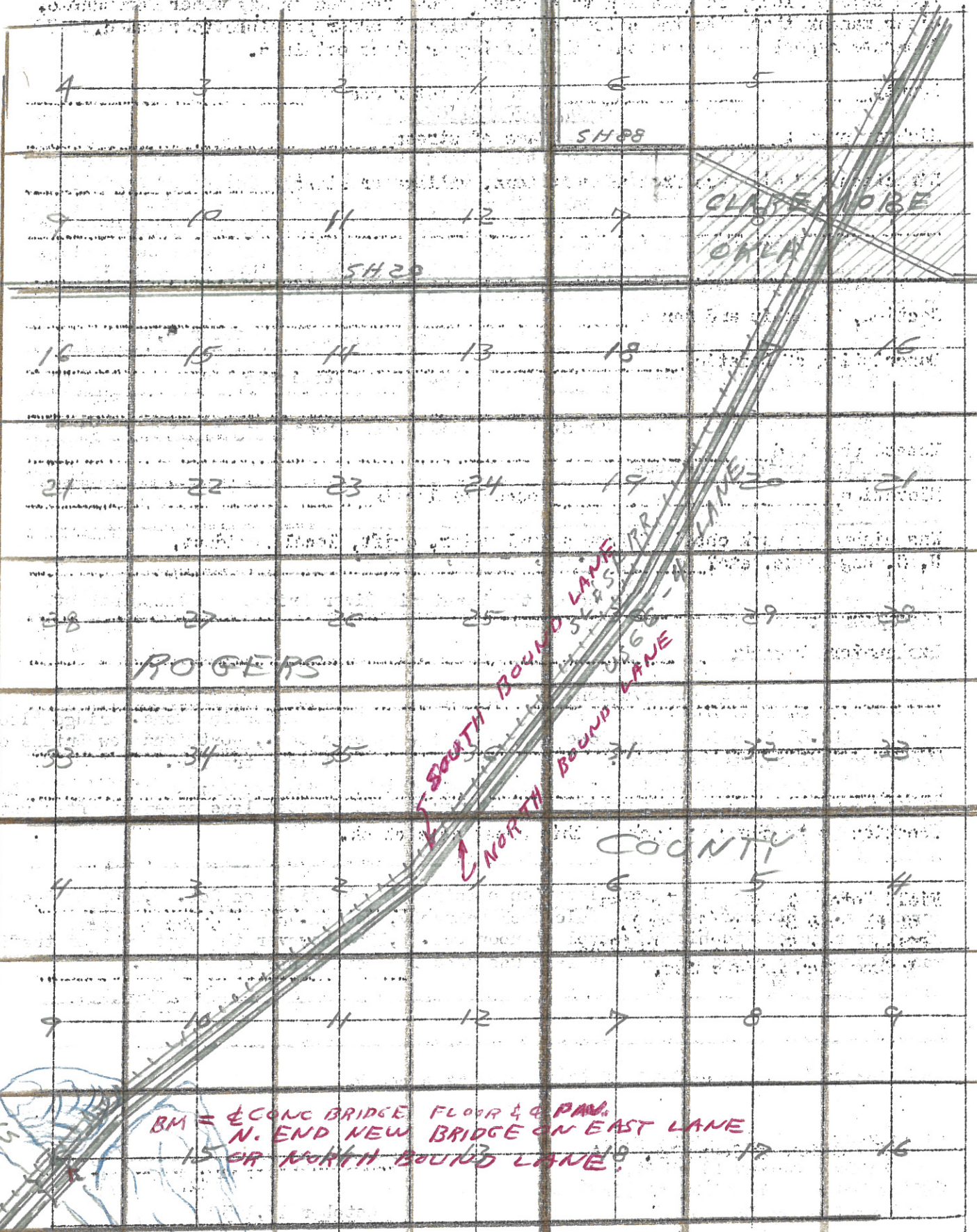
B-15-E

R-16-E

T 22 N

T 21 N

T 20 N



BM = & CONG BRIDGE FLOOR & PAV.
 N. END NEW BRIDGE ON EAST LANE
 15 OR NORTH BOUND LANE.