

RECEIVED

JUN 7 1993

SURVEY
DIVISION

STATE OF OKLAHOMA
DEPARTMENT OF HIGHWAYS
SURVEY DIVISION

Survey Division
Form No. 16
Rev. Sept. 10, 1961

FLOOD INFORMATION FORM

To be used in obtaining and transmitting flood water elevations for Survey Division office record files. This information to be obtained by all Chiefs of Party or others in their vicinity in times of unusual high water, or at any time available from a reliable source. The elevations can be recorded by level reading, by measurement from bridge floor, in relation to a house, above roadbed or any other dependable, clear manner that fits the situation, the highest order possible to be used. Separate report to be made on each crossing or place obtained.

County PAWNEE Date highwater occurred 5-10-93

Highway number N-S 343 Name of stream BLACK BEAR CREEK

Direction and distance from nearest town, village or store 3 MI. NORTH &
2 MI. EAST OF LELA

Section, Township and Range SEC. 28, T22N-R4E

Description of Location COUNTY BRIDGE, WEST SIDE SEC. 28^{of}

Elevation _____ Source of levels _____

Method obtained ENGR. LEVEL & ROD Date obtained 5-20-93

Did it appear to be normal medium extreme do not know

Was highwater mark obtained from actual water, drift, local resident, U. S. Engineers, etc.? DRIFT

Explanatory Remarks HIGHWATER - 6.2' ABOVE SE. BRIDGE SEAT

Location to be shown on back of this sheet as a check.

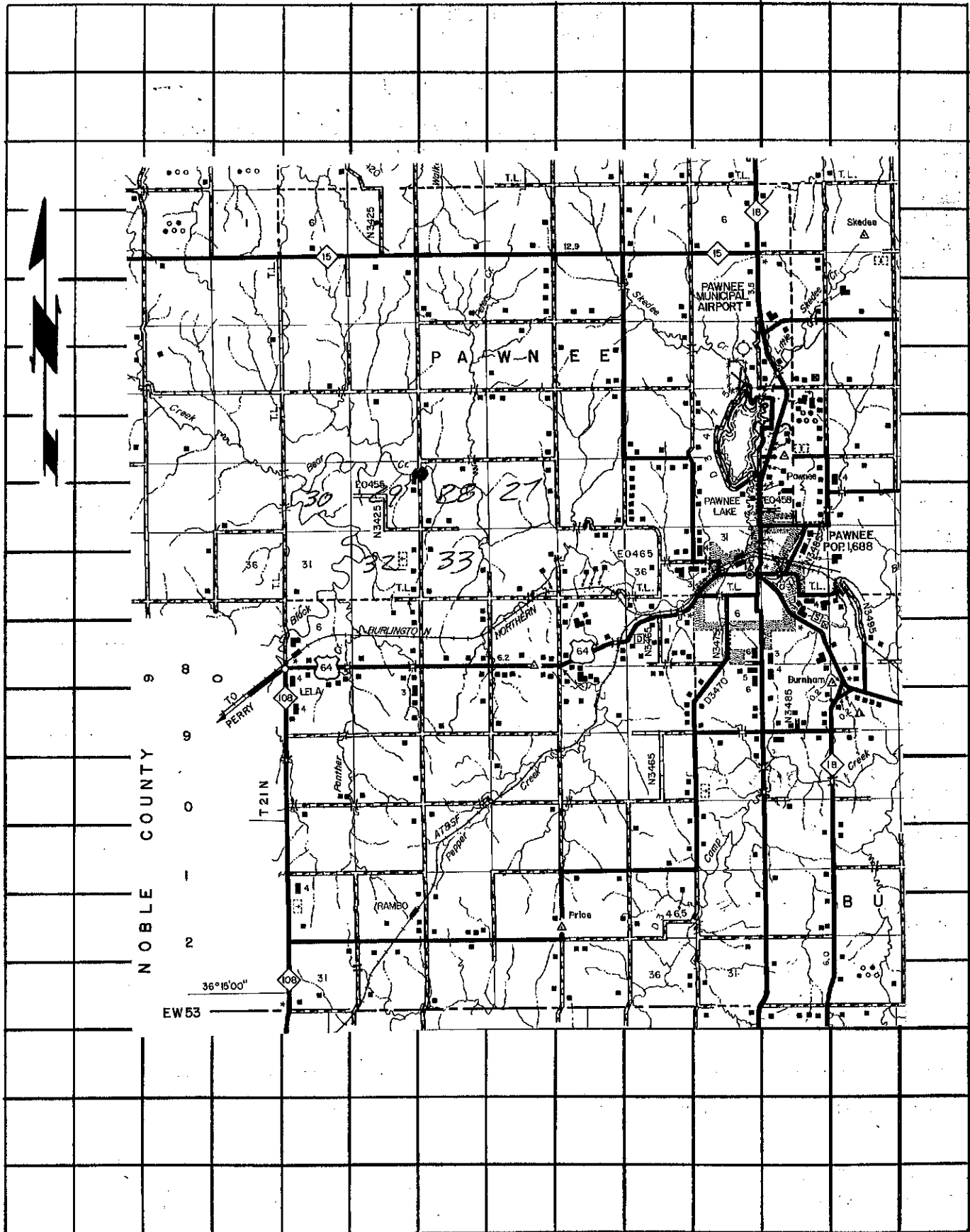
Field Note: To be sent to
Survey Engineer

Ronald D. Seim
Chief of Party

5-24-93
Date

Copy to Bridge 6-8-93

LOCATION No. 18



NOBLE COUNTY

9
8
9
0
1
2

36°15'00"
EW 53

P A W N E E

PAWNEE MUNICIPAL AIRPORT

PAWNEE LAKE

PAWNEE POP. 1,688

BURLINGTON

NORTHERN

BURNHAM

B U

TO PERRY

T21N

RAMBO

Prloo

30

29

28

27

32

33

31

36

31

E0465

E0465

E0486

E0486

E0465

E0465

E0455

E0455

E0455

E0455

E0455

E0455

E0455

E0455

E0455

E0455

E0455

E0455

36

31

31

31

31

31

31

31

31

31

31

31

31

31

6

6

6

6

6

6

6

6

6

6

6

6

6

6

4

4

4

4

4

4

4

4

4

4

4

4

4

4

4

4

4

4

4

4

4

4

4

4

4

4

4

4

108

31

31

31

31

31

31

31

31

31

31

31

31

31

31

31

31

31

31

31

31

31

31

31

31

31

31

31

31

31

31

31

31

31

31

31

31

31

31

31

31

31

31

31

31

31

31

31

31

31

31

31

31

31

31

31

31

31

31

31

31

31

31

31

31

31

31

31

31

31