

STATE OF OKLAHOMA
DEPARTMENT OF HIGHWAYS
PLANS AND SURVEY DEPARTMENT

FLOOD INFORMATION FORM

To be used in obtaining and transmitting flood water elevations for Plans & Survey office record files. This information to be obtained by all Chiefs of Party in their vicinity in times of unusual high water, or at any time available from a reliable source. The elevations can be recorded by level reading, by measurement from bridge floor, in relation to a house, above roadbed or any other dependable, clear manner that fits the situation, the highest order possible to be used. Separate report to be made on each crossing or place obtained.

County Ottawa Date highwater occurred July 16, 1954
Highway number U.S. 66 Name of stream Neosho River
Direction and distance from nearest town, village or store On Neosho River
Bridge in Miami

Section, Township and Range Sec 31-128-R23E

Description of Location At Sta 745 NRM 8A on Neosho
River Br. in Miami

Method obtained Wye Level

Elevation 779.56 Source of levels U.S.G.S. G.S.

Was highwater mark obtained from actual water, drift, local resident, U. S. Engineers, etc? Actual Mark

Explanatory Remarks This HW. Was obtained by Carl Brown
Resident Engineer's field party. This information
was written up from plans handed to me
by Carl Brown

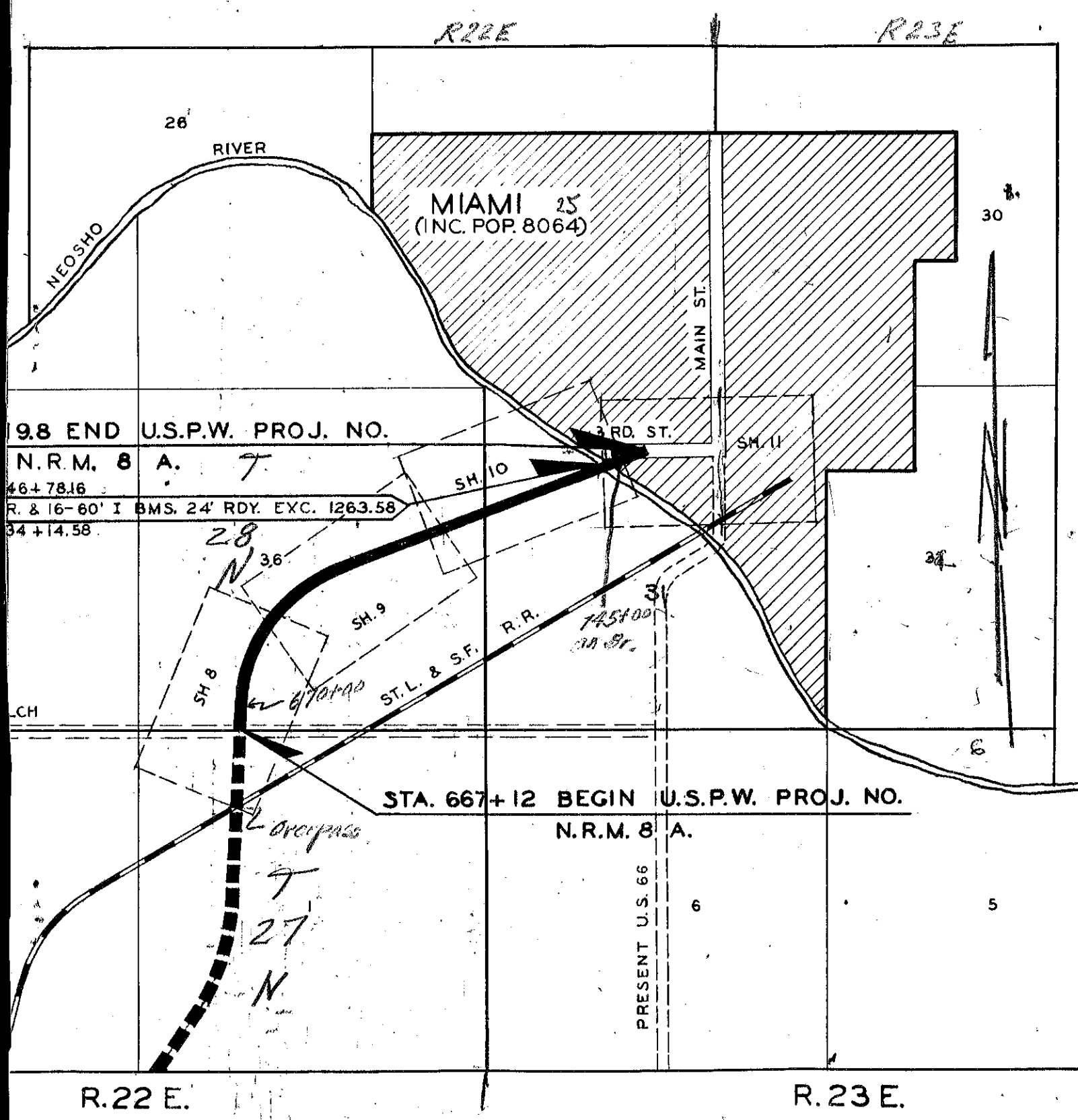
Location to be shown on back of this sheet as a check.
See Attached Map for Location

Field Note: To be sent to Engr.
of Plans & Survey (1 copy).
Office Note: To be filed in Flood
Information by Counties.

A. B. [Signature]
Asst Eng Chief of Party Plans & Survey
Feb 21, 1952
Date

U.S. HIGHWAY NO. 66

OTTAWA COUNTY



9.8 END U.S.P.W. PROJ. NO.
 N.R.M. 8 A. 7
 46+78.16
 R. & 16-60' I BMS. 24' RDY. EXC. 1263.58
 34+14.58

STA. 667+12 BEGIN U.S.P.W. PROJ. NO.
 N.R.M. 8 A.

R.22 E.

R.23 E.