

STATE OF OKLAHOMA  
DEPARTMENT OF HIGHWAYS  
SURVEY DIVISION

Survey Division  
Form No. 16  
Rev. Dec. 2, 1974

OCT 04 1993

FLOOD INFORMATION FORM

To be used in obtaining and transmitting flood water elevations for Survey Division office record files. This information to be obtained by all Chiefs of Party or others in their vicinity in times of unusual high water, or at any time available from a reliable source. The elevations can be recorded by level reading, by measurement from bridge floor, in relation to a house, above roadbed or any other dependable, clear manner that fits the situation, the highest order possible to be used. Separate report to be made on each crossing or place obtained.

County OTTAWA Date highwater occurred SEPTEMBER 27, 1993

Highway number U.S. 69 Name of stream NEOSHO RIVER

Direction and distance from nearest town, village or store AT WEST EDGE OF MIAMI, OKLA.

Section, Township and Range SECTION 31, T28N, R23E

Description of Location \_\_\_\_\_

Elevation \_\_\_\_\_ Source of levels \_\_\_\_\_

Method obtained WILD LEVEL Date obtained SEPTEMBER 27, 1993

Did it appear to be  normal  medium  extreme  do not know

Was highwater mark obtained from actual water, drift, local resident, U. S. Engineers, etc.? ACTUAL WATER

Explanatory Remarks WATER WAS 7.69 feet BELOW A BRASS CAP SET BY THE US ARMY CORP  
OF ENGINEERS SET ON THE NORTHEAST WINGWALL AT THE NORTHEAST COR. OF THE NEOSHO  
RIVER BRIDGE.

Location to be shown on back of this sheet as a check.

Field Note: To be sent to  
Survey Engineer



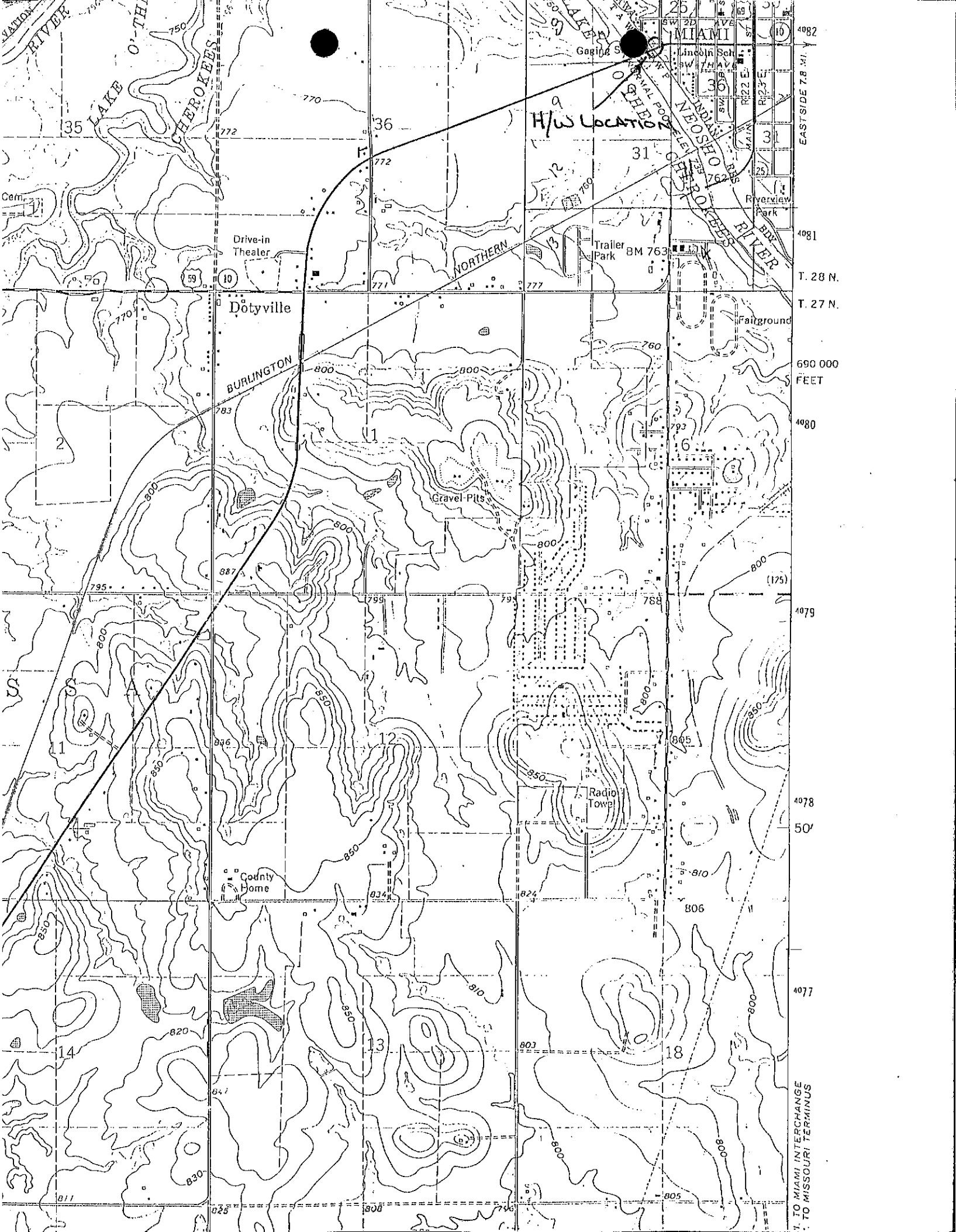
Location Engineer

SEPTEMBER 28, 1993

Date

Copy to Bridge 10-6-93

LOCATION No. 3



H/W Location

Dotyville

BURLINGTON

Gravel-Pits

Trailer Park

BM 763

Radio Tower

County Home

TO MISSOURI INTERCHANGE  
TO MISSOURI TERMINUS

T. 28 N.  
T. 27 N.  
690 000  
FEET

EAST SIDE T. 8 MI.

4082  
4081  
4080  
4079  
4078  
50'  
4077

4078  
4077

MIAMI

31

13

760

792

788

805

824

803

805

35

36

31

12

760

792

788

805

824

803

805

795

783

799

795

788

14

13

18

811

825

808

796

805

Cem.

Drive-in Theater

Riverview Park

Fairground

810

806

803

805

Cem.

Drive-in Theater

Riverview Park

Fairground

810

806

803

805

Cem.

Drive-in Theater

Riverview Park

Fairground

810

806

803

805