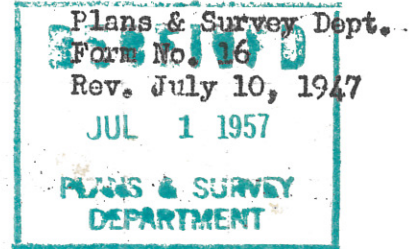


STATE OF OKLAHOMA
DEPARTMENT OF HIGHWAYS
PLANS AND SURVEY DEPARTMENT

FLOOD INFORMATION FORM



To be used in obtaining and transmitting flood water elevations for Plans & Survey office record files. This information to be obtained by all Chiefs of Party in their vicinity in times of unusual high water, or at any time available from a reliable source. The elevations can be recorded by level reading, by measurement from bridge floor, in relation to a house, above roadbed or any other dependable, clear manner that fits the situation, the highest order possible to be used. Separate report to be made on each crossing or place obtained.

County Tulsa Date highwater occurred May 17, 1957

Highway number SH 51 US 64 Name of stream Arkansas River

Direction and distance from nearest town, village or store 1/2 miles south of Sand Springs on US 64.

Section, Township and Range Sec 14 T 19 N R 11 E

Description of Location Concrete bridge over Arkansas River

Method obtained Wye Level

Elevation 12.4 below B.M. Source of levels B.M.- Centerline of floor on south end of bridge.

Was highwater mark obtained from actual water, drift, local resident, U. S. Engineers, etc? Actual water observed in the field by H. G. Uselton.

Instrumentman and G. E. Davis, Chainman on this party.

Explanatory Remarks This Hi-water occurred after intermittent rain the months of April and May.

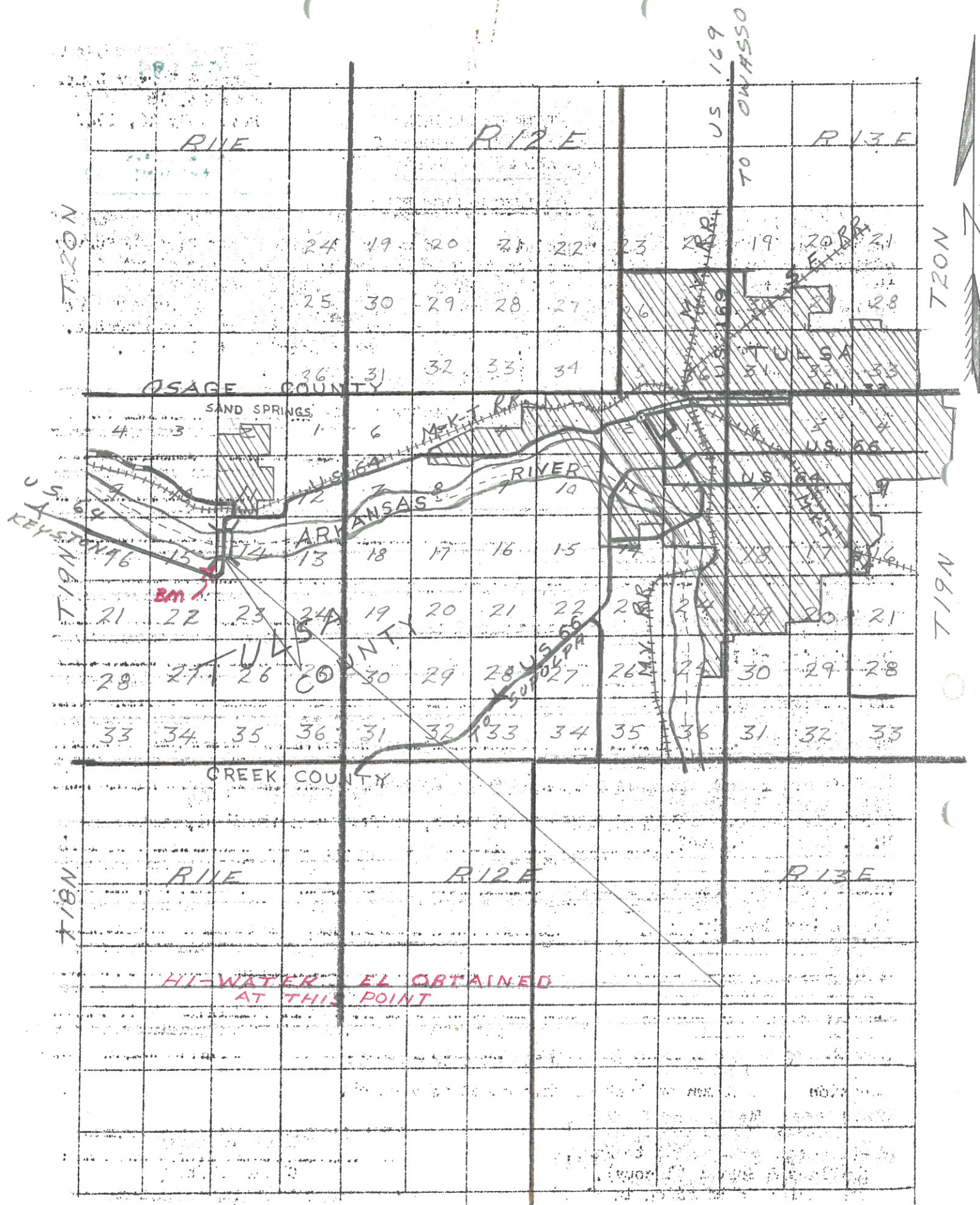
Location to be shown on back of this sheet as a check.

Field Note: To be sent to Engr. of Plans & Survey (1 copy).
Office Note: To be filed in Flood Information by Counties.

Reas. Ray Moran
Chief of Party

May 23, 1957
Date

LOCATION NO. 9



HI-WATER EL OBTAINED
AT THIS POINT

U.S. 169
TO OWASSO

T20N

T20N

T19N

T19N

T18N

OSAGE COUNTY

SAND SPRINGS

ARIZONA RIVER

CREEK COUNTY

RIVE

R12E

R13E

U.S. 64
TO KEYSTONE

RR

RR

RR

RR

RR

RR

RR

RR

RR

RR

RR

RR

RR

RR

RR

RR

RR

RR

RR