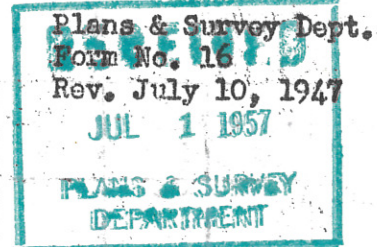


STATE OF OKLAHOMA
DEPARTMENT OF HIGHWAYS
PLANS AND SURVEY DEPARTMENT

FLOOD INFORMATION FORM



To be used in obtaining and transmitting flood water elevations for Plans & Survey office record files. This information to be obtained by all Chiefs of Party in their vicinity in times of unusual high water, or at any time available from a reliable source. The elevations can be recorded by level reading, by measurement from bridge floor, in relation to a house, above roadbed or any other dependable, clear manner that fits the situation, the highest order possible to be used. Separate report to be made on each crossing or place obtained.

County Tulsa Date highwater occurred May 17, 1957

Highway number 11 Name of stream Bird Creek

Direction and distance from nearest town, village or store 2 miles north of Skiatook on State Highway 11.

Section, Township and Range Sec 12 T 22N R 12 E

Description of Location Concrete bridge over Bird Creek.

Method obtained Wye Level

← Elev. 648.12

Elevation 10.5 below B.M. Source of levels concrete bridge.

B.M. - Northeast end of

Was highwater mark obtained from actual water, drift, local resident, U. S. Engineers, etc? Actual water observed in the field by H. G. Uselton,

Instrumentman and G. E. Davis, Chairman on this party.

Explanatory Remarks This Hi-water occurred after intermittent rain the months of April and May.

Location to be shown on back of this sheet as a check.

Field Note: To be sent to Engr. of Plans & Survey (1 copy).

Office Note: To be filed in Flood Information by Counties.

Russ Oay Moran
Chief of Party

May 23, 1957

Date

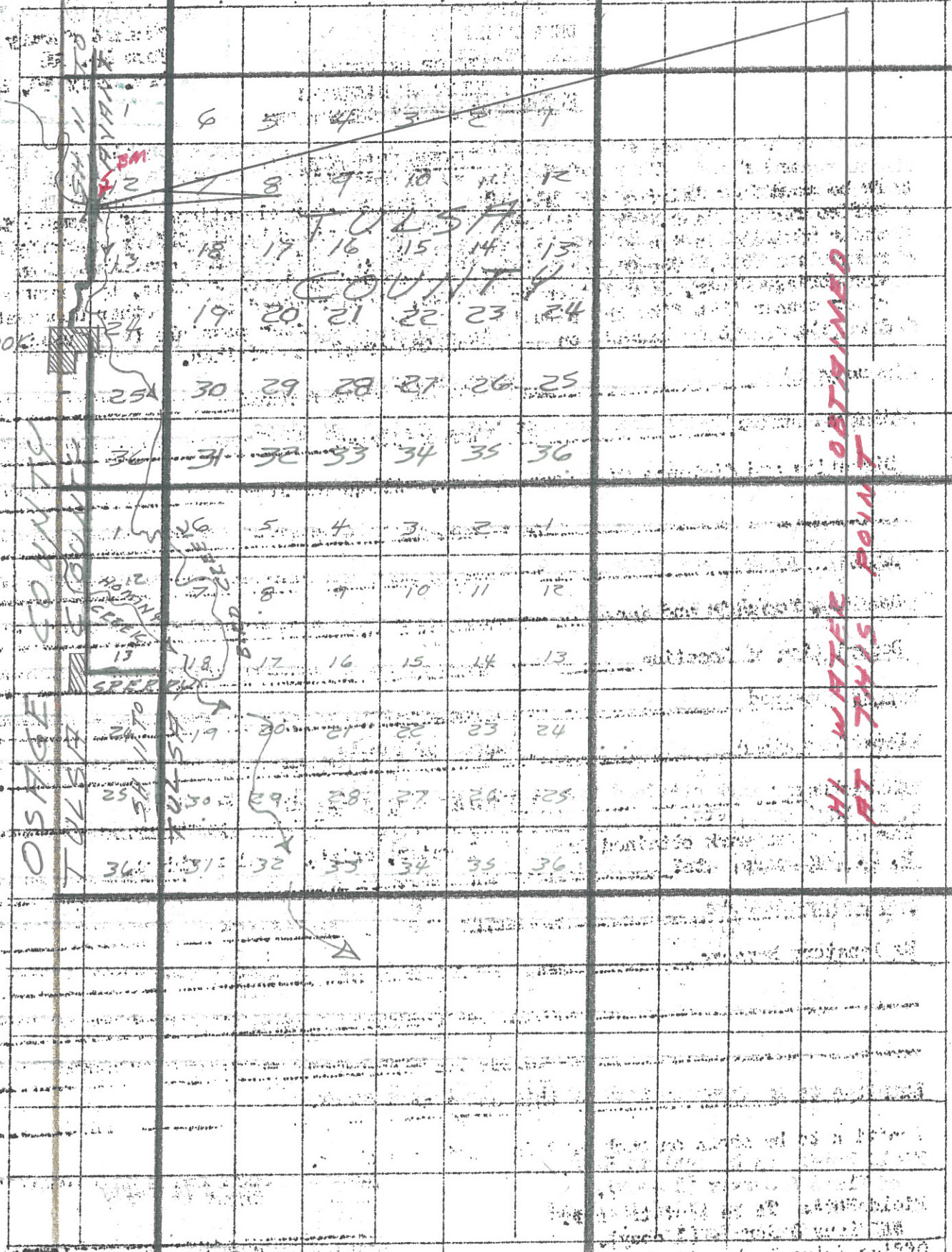
Location No. 18

R 13 E

R 14 E

T 22 N
SKIATOOK

N 22 L



OSAGE COUNTY
TULSA COUNTY

WATER
SINK

R 13 E

R 14 E

N 12 L