

STATE OF OKLAHOMA
DEPARTMENT OF HIGHWAYS
SURVEY DIVISION

FLOOD INFORMATION FORM

To be used in obtaining and transmitting flood water elevations for Survey Division office record files. This information to be obtained by all Chiefs of Party or others in their vicinity in times of unusual high water, or at any time available from a reliable source. The elevations can be recorded by level reading, by measurement from bridge floor, in relation to a house, above roadbed or any other dependable, clear manner that fits the situation, the highest order possible to be used. Separate report to be made on each crossing or place obtained.

County Tulsa Date highwater occurred May 9 1970

Highway number Broken Arrow Expressway Name of stream Mingo Creek

Direction and distance from nearest town, village or store Approx. 1450 ft. S.E. of the intersection of 129 th. E. Ave. and Broken Arrow Expressway.

Section, Township and Range Sec. 33, T-19-N, R-14-E.

Description of Location Approx. 1450 ft. South East along Broken Arrow Expressway from the intersection of 129 th. E. Ave. and Broken Arrow expressway and 55 ft. north of the expressway.

Elevation 709.7 Source of levels USC&GS

Method obtained Engineering level & rod Date obtained Aug. 12, 1970

Did it appear to be normal medium extreme do not know

Was highwater mark obtained from actual water, drift, local resident, U. S. Engineers, etc.? Drifts and Water marks

Explanatory Remarks Heavy rain in the immediate vicinity and in the upper water shed of mingo creek. center line of roadway at bridge approx. 1850 ft. S.E. along Broken Arrow. Expressway from the intersection of 129 th. E. Ave. and Broken Arrow Expressway. Center line of road Elev. = 711.1 .

Location to be shown on back of this sheet as a check.

Field Note: To be sent to
Survey Engineer

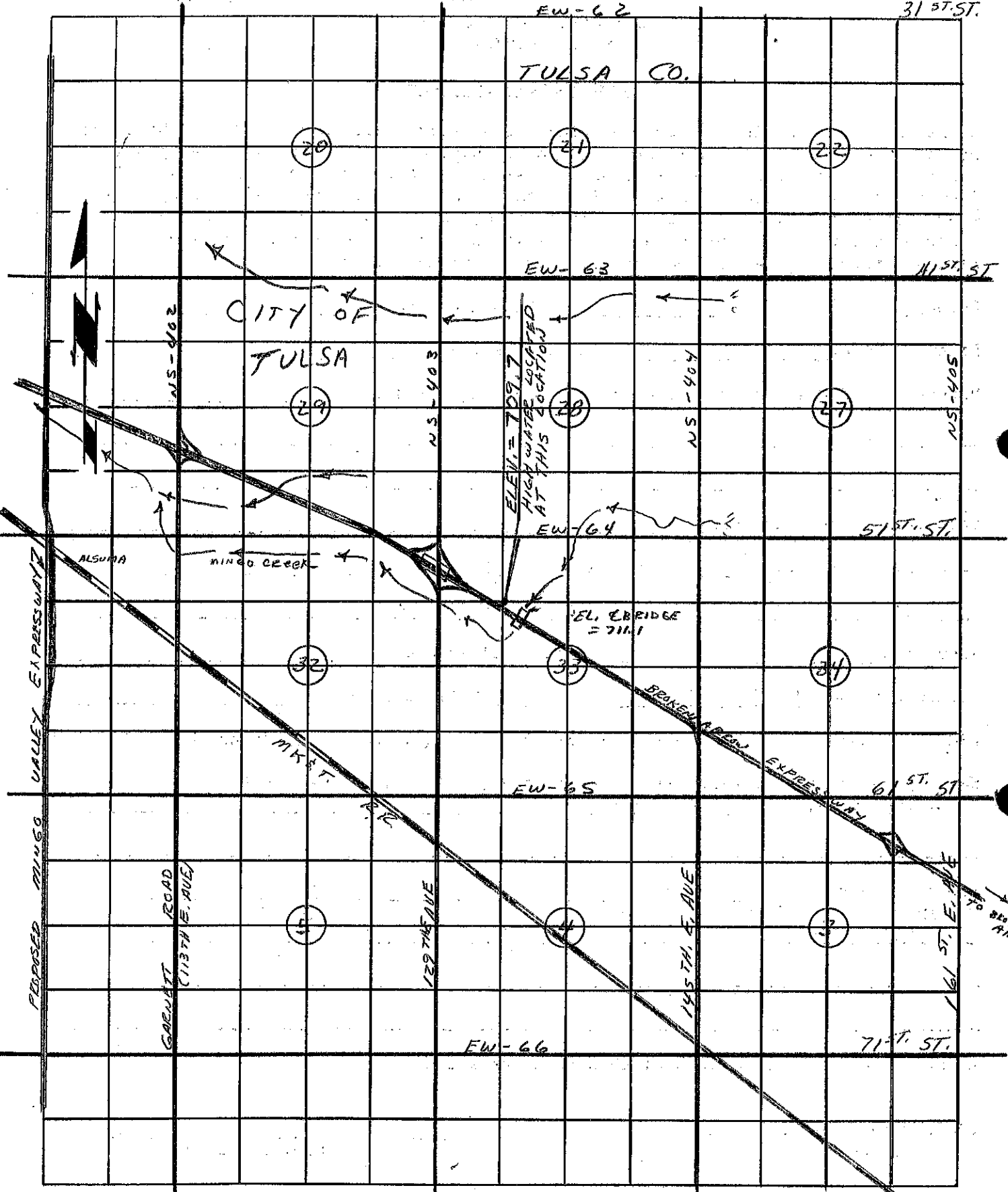
Rees Day Morant
~~Chief of Party~~
Location Engineer
Aug. 13, 1970
Date

Location No. 29

EW-62

31 ST. ST.

TULSA CO.



CITY OF TULSA

ELEV. = 709.7
HIGH WATER LOCATED
AT THIS LOCATION

ELEV. EBIDGE = 711.1

T 19 N

T 18 N

TO BAKEN AREA

PROPOSED VALLEY EXPRESSWAY

GARNETT ROAD
(11374 E. AVE)

129 TH AVE

145 TH E. AVE

161 ST. E. AVE

NS-402

NS-403

NS-404

NS-405

EW-63

111 ST. ST.

EW-64

51 ST. ST.

EW-65

61 ST. ST.

EW-66

71 ST. ST.

