

SURVEY DIVISION	
✓ GHS	6-29-70
WV	
RS	
GVP	
✓ OCC	6/30/70
✓ ROC	6-30-70
GP	
SDD	
RDA	
DP	
IF	

STATE OF OKLAHOMA
DEPARTMENT OF HIGHWAYS
SURVEY DIVISION

Survey Division
Form No. 16
Rev. Sept. 10, 1961
RECEIVED
JUN 29 1970
SURVEY DIVISION
for Survey Division

FLOOD INFORMATION FORM

To be used in obtaining and transmitting flood water elevations office record files. This information to be obtained by all Chiefs of Party or others in their vicinity in times of unusual high water, or at any time available from a reliable source. The elevations can be recorded by level reading, by measurement from bridge floor, in relation to a house, above roadbed or any other dependable, clear manner that fits the situation, the highest order possible to be used. Separate report to be made on each crossing or place obtained.

County Tulsa Date highwater occurred May 9, 1970

Highway number I-44 Name of stream Joe Creek

Direction and distance from nearest town, village or store Approx. 1400' West and 321' North of the intersection of 51 st. St. and Harvard Ave. (Tulsa Co.)

Section, Township and Range Sec. 29 & 32, T-19-N, R-13-E.

Description of Location Approx. 1400' West and 321' North of the S.E. cor. sec. 29, T-19-N, R-13-E. In the vicinity where Joe creek crosses I-44 Expressway (Sta. 303+64 Skelly bypass)

Elevation see map on back Source of levels USC&GS - Mean Sea Level

Method obtained Engineering Level & Rod Date obtained June 11, 1970

Did it appear to be normal medium extreme do not know

Was highwater mark obtained from actual water, drift, local resident, U. S. Engineers, etc.? Drifts & actual water as marked by the Soil Conservation Personnel.

Explanatory Remarks BRIDGE DEPT. & U.S.G.S. Soil Conservation Personnel marked and requested.

(Reference to instruction from Mr. Oscar C. Curnutt Survey Division.)

Highwater elev. at these locations. Highwater due to heavy rain in Joe creek water shed area. (See map on back for additional high water elevations.)

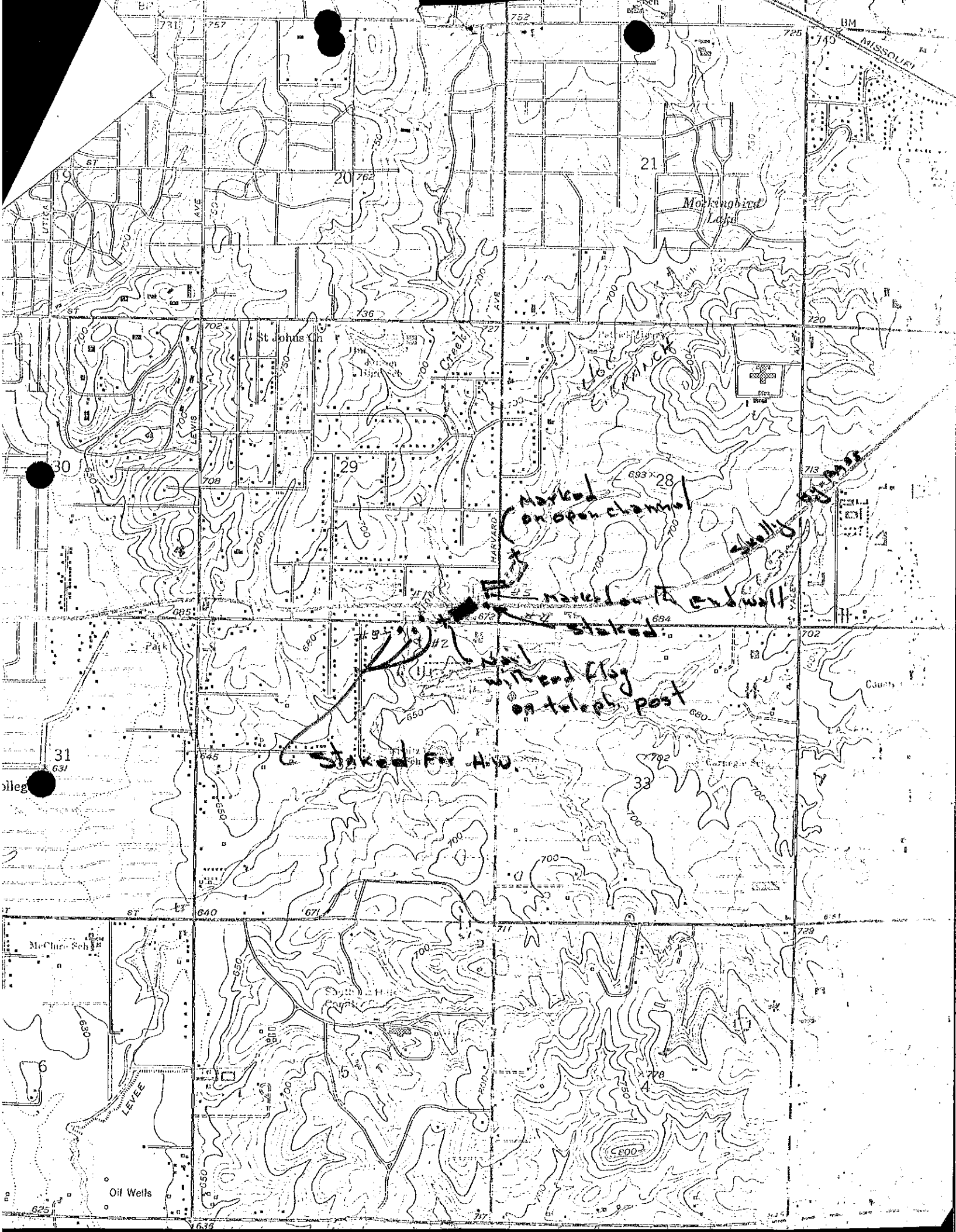
Location to be shown on back of this sheet as a check.

Field Note: To be sent to Survey Engineer

Ben J. Moran
Rex Rex Rex Rex
Location Engineer
June 22, 1970
Date

FILE: TULSA Co. FLOOD FILE
MC: BRIDGE DIV.

Location No. 33



Marked on open channel

Staked for A.W.

Need flag on teleph. post

Staked for A.W.

21

29

30

31

Mockingbird Lake

St. Johns Ch.

LEVEE

Oil Wells

BM

MISSOURI

County

McClure Sch

693-28

672

654

670

660

670

670

670

670

670

670

670

670

670

670

670

670

731

757

752

725

740

762

736

700

700

700

700

700

700

700

700

700

700

700

700

700

700

700

700

700

700

700

700

700

700

700

700

700

700

10

10

10

10

10

10

10

10

10

10

10

10

10

10

10

10

10

10

10

10

10

10

10

10

10

10

10

10

10

10

10

10

10

10

10

10

10

10

10

10

10

10

10

10

10

10

10

10

10

10

10

10

10

10

10

10

10

10

10

10

10

10

10

10

10

10

10

10

10

10

10

10

10

10

10

10

10

10

10

10

10

10

10

10

10

10

10

10

10

10

10

10

10

10

10

10

10

10

10

10

10

10

10

10

10

10

10

10

10

10

10

10

10

10

10

10

10

10

10

10

10

10

10

10

10

10

10

10

10

10

10

10

10

10

10

10

10

10

10

10

10

10

10

10

10

10

10

10

10

10

10

10

10

10

10

10

10

10

10

10

10

10

10

10

10

10

10

10

10

10

10

10

10

10

10

10

10

10

10

10

10

10

10

10

10

10

10

10

10

10

10

10

10

10

10

10

10

10

10

10

10

10

10

10

10

10

10

10

10

10

10

10

10

10

10

10

10

10

10

10

10

10

10

10

10

10

10

10

10

10

10

10

10

10

10

10

10

10

10

10

10

10

10

10

10

10

10

10

10

10

10

10

10

10

10

10

10

10

10

10

10

10

10

10

10

10

10

10

10

10

10

10

10

10

10

10

10

10

10

10

10

10

10

10

10

10

10

10

10