

STATE OF OKLAHOMA  
DEPARTMENT OF HIGHWAYS  
SURVEY DIVISION

FLOOD INFORMATION FORM

To be used in obtaining and transmitting flood water elevations for Survey Division office record files. This information to be obtained by all Chiefs of Party or others in their vicinity in times of unusual high water, or at any time available from a reliable source. The elevations can be recorded by level reading, by measurement from bridge floor, in relation to a house, above roadbed or any other dependable, clear manner that fits the situation, the highest order possible to be used. Separate report to be made on each crossing or place obtained.

County Tulsa Date highwater occurred October 1, 1986

Highway number County Road Name of stream Coal Creek

Direction and distance from nearest town, village or store Approx. 0.3 miles east  
of the intersection of US 75 and SH 67 1 mile south of Glenpool

Section, Township and Range Between Sections 14 & 23, T17N, R12E

Description of Location \_\_\_\_\_

Elevation \_\_\_\_\_ Source of levels \_\_\_\_\_

Method obtained Fennel Level Date obtained October 6, 1986

Did it appear to be  normal  medium  extreme  do not know

Was highwater mark obtained from actual water, drift, local resident, U. S. Engineers, etc.? Actual water marks and residue

Explanatory Remarks Water was 0.2 over road at the centerline of bridge and was 0.7  
foot deep over road approx 150' west of bridge.

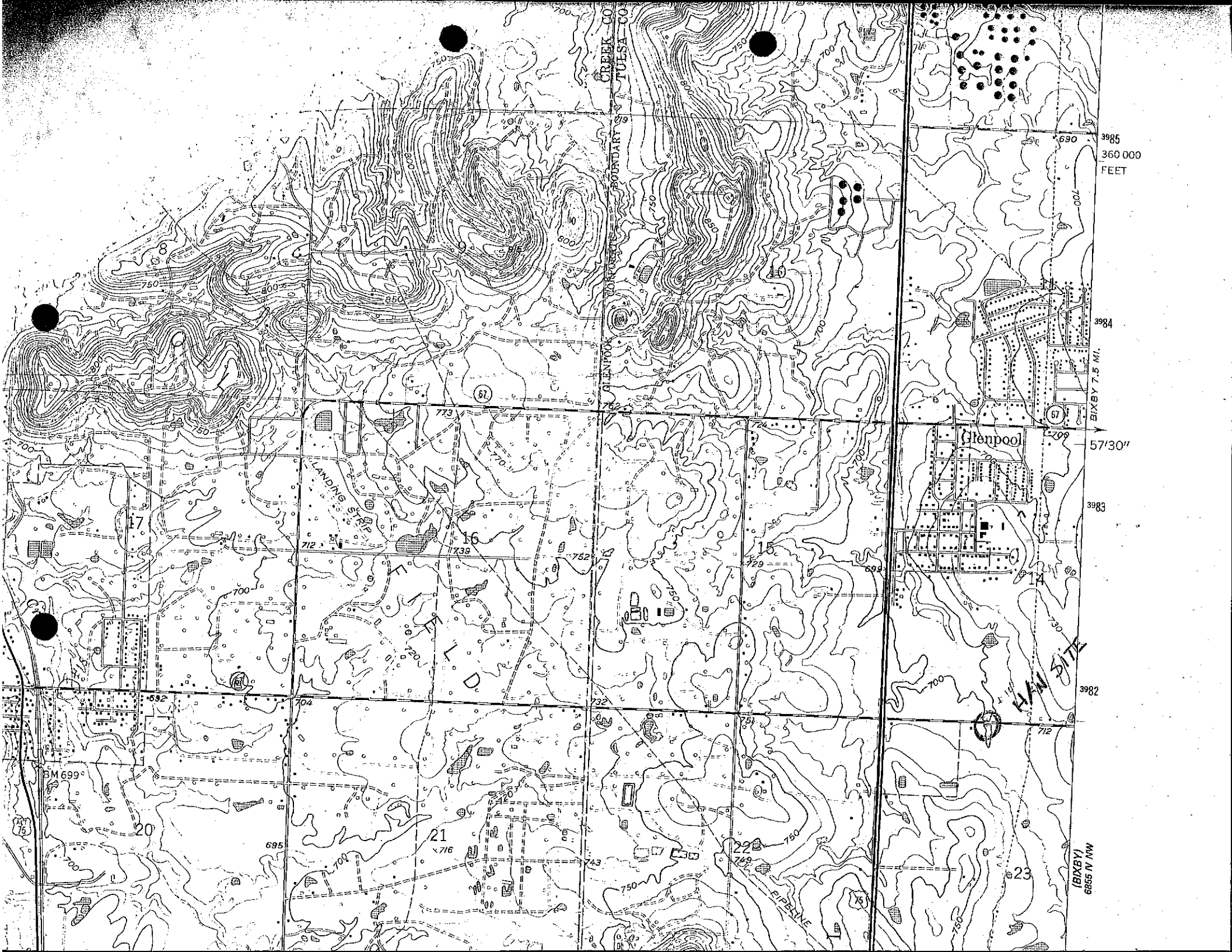
Location to be shown on back of this sheet as a check.

Field Note: To be sent to  
Survey Engineer

*James Wayne Rogers*  
Location Engineer

October 9, 1986  
Date

LOCATION No. 82



CREEK CO  
TULSA CO  
GLANPOOL BOUNDARY

3985  
360 000  
FEET

3984  
SIXBY 7.5 MI.

57°30"

3983

3982

(BIXBY)  
6655 N MW

Glenpool

HAW SITE

LANDING STRIP

PIPELINE

17

16

15

21

22

23

BM 699

739

773

772

776

752

732

743

729

722

742

699

730

750

709

730

712

750

690

700

700

700

700

700

700

700

750

750

750

750

750

750

750

750

750

750

700

700

700

700

700

700

700

700

700

700

700

700

700

700

700

700

700

700

700

700

700

700

700

700

700

700

700

700

700

700

700

700

700

690

700

700

700

700

700

700

700

750

750

739

773

772

776

752

732

743

729

722

742

699

730

750

709

730

712

750

690

700

700

700

700

700

700

700

750

750

750

750

750

750

750

750

750

750

750

700

700

700

700

700

700

700

700

700

700

700

700

700

700

700

700

700

700

700

700

700

700

700

700

700

700

700

700

700

700

700

700

700

690

700

700

700

700

700

700

700

750

750

739

773

772

776

752

732

743

729

722

742

699

730

750

709

730

712

750

690

700

700

700

700

700

700

700

750

750

750

750

750

750

750

750

750

750

750

700

700

700

700

700

700

700

700

700

700

700

700

700

700

700

700

700

700

700

700

700

700

700

700

700

700

700

700

700

700

700

700

700

690

700

700

700

700

700

700

700

750

750

739

773

772

776

752

732

743

729

722

742

699

730

750

709

730

712

750

690

700

700

700

700

700

700

700

750

750

750

750

750

750

750

750

750

750

750

700

700

700

700

700

700

700

700

700

700

700

700

700

700

700

700

700

700

700

700

700

700

700

700

700

700

700

700

700

700

700

700

700

690

700

700

700

700

700

700

700