

RED ROCK 0577

Plans & Survey Dept.  
Form No. 16  
Rev. July 10, 1947

STATE OF OKLAHOMA  
DEPARTMENT OF HIGHWAYS  
PLANS AND SURVEY DEPARTMENT

FLOOD INFORMATION FORM

To be used in obtaining and transmitting flood water elevations for Plans & Survey office record files. This information to be obtained by all Chiefs of Party in their vicinity in times of unusual high water, or at any time available from a reliable source. The elevations can be recorded by level reading, by measurement from bridge floor, in relation to a house, above roadbed or any other dependable, clear manner that fits the situation, the highest order possible to be used. Separate report to be made on each crossing or place obtained.

County Noble Date highwater occurred November 18, 1964

Highway number US 77 Name of stream Red Rock Creek

Direction and distance from nearest town, village or store 5.5 miles West  
and 0.5 mile South of Red Rock Oklahoma,

Section, Township and Range Between Sections 22 & 23, T-23-N, R-1-W

Description of Location At Red Rock Creek bridge on US 77 0.5 mile South of  
junction of US 77 and SH 15. 5.5 miles West and 0.5 mile South of Red Rock Okla.

Method obtained Y-Level

Elevation None Source of levels None

Set-BM( Square) NW corner of NW Wingwall of bridge,  
Was highwater mark obtained from actual water, drift, local resident,  
U. S. Engineers, etc? ~~XX~~ Actual Highwater as

Marked by Oklahoma Highway Dept. Maintenance Crew on Nov. 18, 1964, 6.55 below  
bridge floor North End bridge Or 7.48 below (Square on NW cor, NW Wingwall)  
Explanatory Remarks Highwater as shown was taken from actual highwater as marked

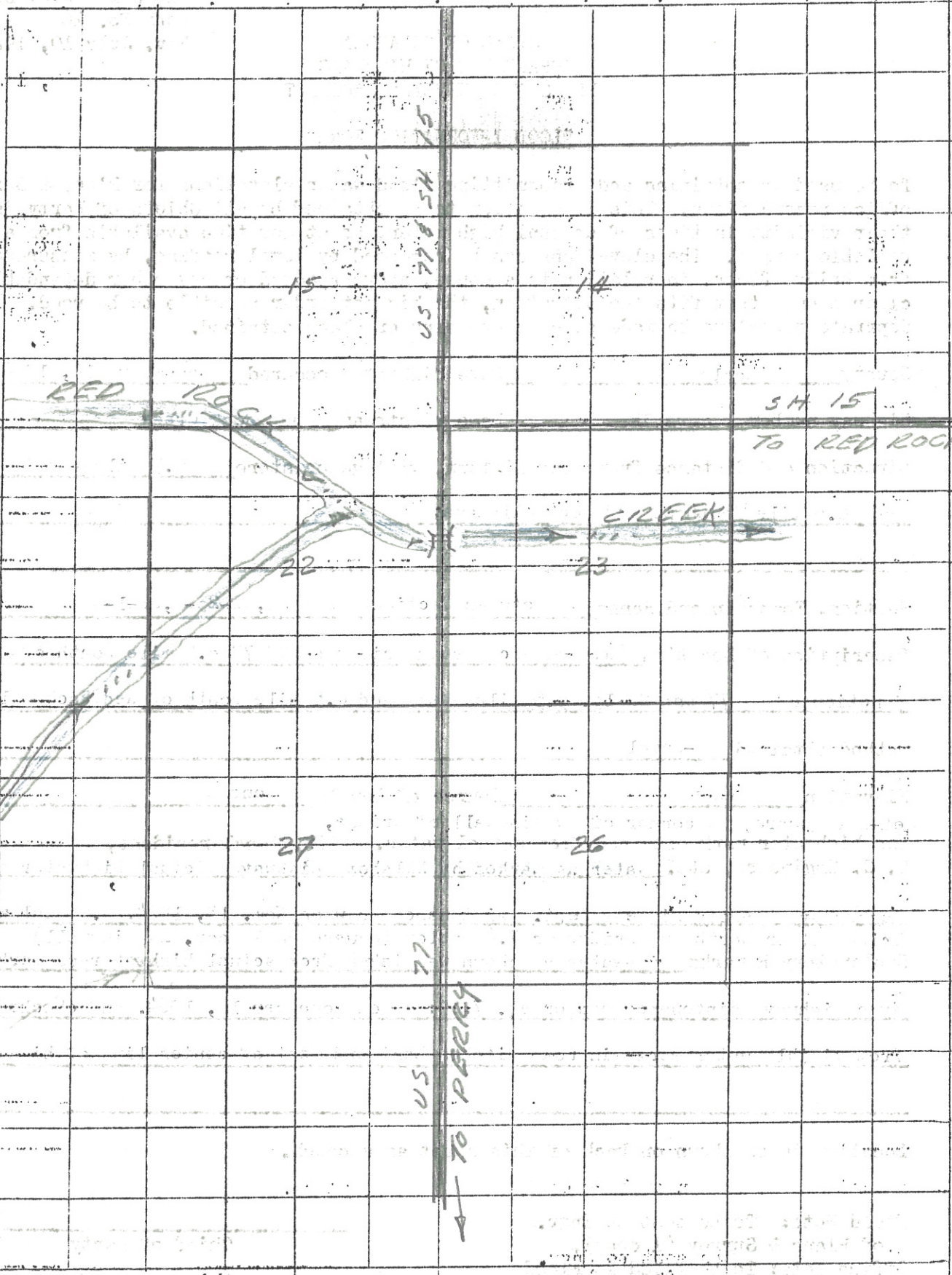
by a Highway maintenance member at. 7.00: AM on November 18, 1964. and checked  
from visibly water marks in road ditches East and West of center line of highway.

Location to be shown on back of this sheet as a check.

Field Note: To be sent to Engr.  
of Plans & Survey (1 copy).  
Office Note: To be filed in Flood  
Information by Counties.

Chas L. Diller  
Chief of Party  
December 15, 1964  
Date

R-1-W



T  
2  
3  
N

US 77 SH 15

SH 15  
TO RED ROCK

A - TO PERRY

RED ROCK

CREEK

15

14

27

26

22

23