

STATE OF OKLAHOMA
DEPARTMENT OF HIGHWAYS
PLANS AND SURVEY DEPARTMENT

FLOOD INFORMATION FORM

To be used in obtaining and transmitting flood water elevations for Plans & Survey office record files. This information to be obtained by all Chiefs of Party in their vicinity in times of unusual high water, or at any time available from a reliable source. The elevations can be recorded by level reading, by measurement from bridge floor, in relation to a house, above roadbed or any other dependable, clear manner that fits the situation, the highest order possible to be used. Separate report to be made on each crossing or place obtained.

County Noble Date highwater occurred October 2, 1959

Highway number US 77 Name of stream Branch of Red Rock Creek

Direction and distance from nearest town, village or store Approx 10 miles north of Perry

Section, Township and Range Between Sections 26 & 27, T23N, R1W

Description of Location At a 6 span Bridge approx. 0.7 miles south of Main Bridge over Red Rock Creek Bridge. This is the south bridge of the 4 bridges near Red Rock Cr.

Method obtained Cloth Tape measured down from Br. Seat

Elevation Highwater was down 0.9 ft. from south Bridge Seat.
~~Source of levels~~

Was highwater mark obtained from actual water, drift, local resident, U. S. Engineers, etc? Water Marks and drift on Bridge and near bridge

Explanatory Remarks The water flowing through this bridge was mostly overflow from Red Rock Creek. I also showed highwater on Red Rock Creek Main Bridge.

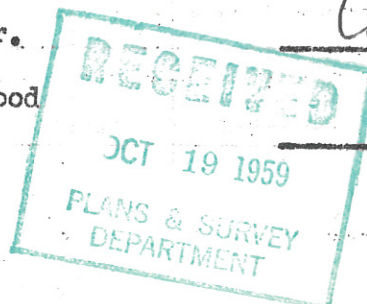
SEE OTHER SHEET FOR MAIN BRIDGE

Location to be shown on back of this sheet as a check.

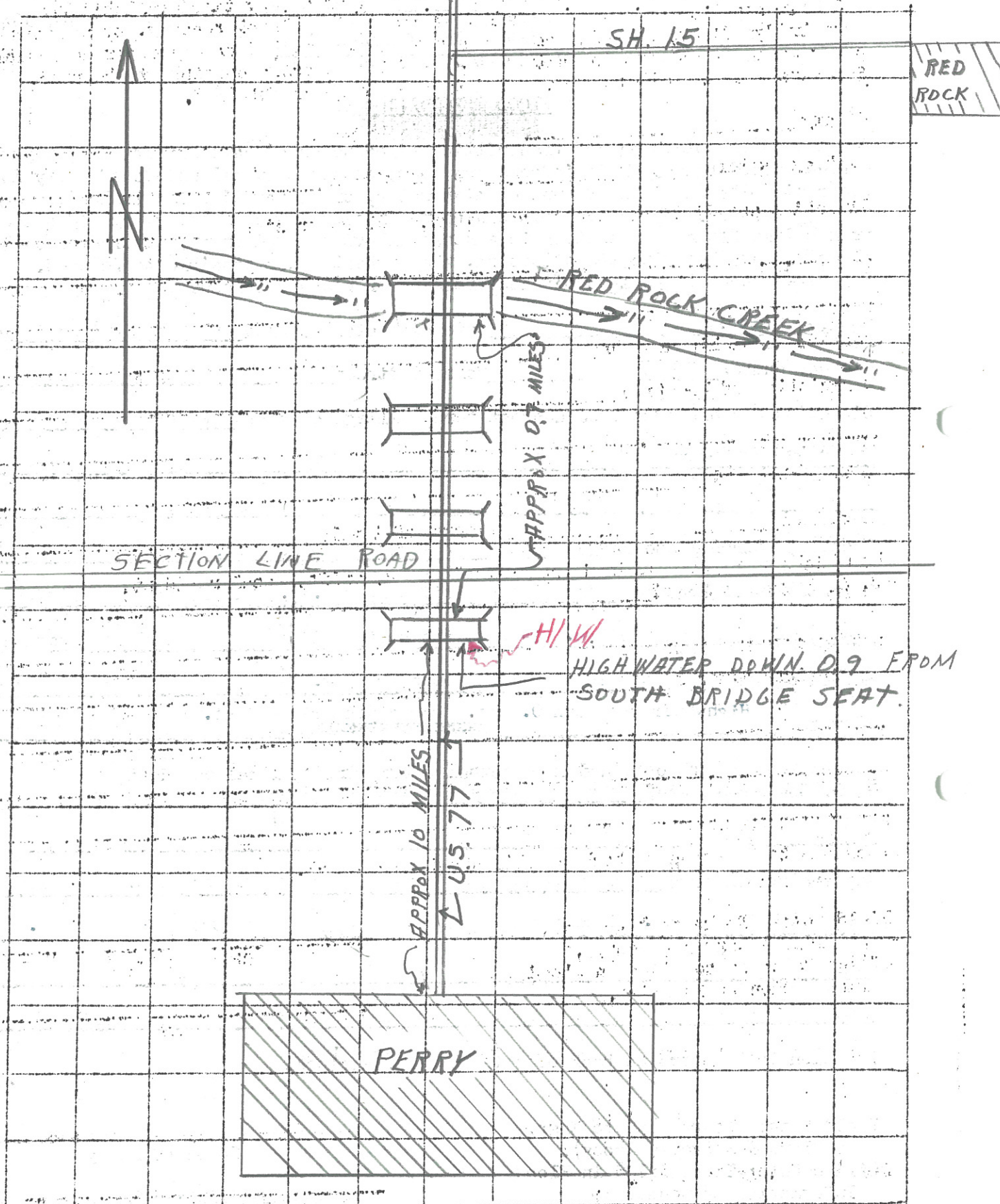
Field Note: To be sent to Engr. of Plans & Survey (1 copy).
Office Note: To be filed in Flood Information by Counties.

Carroll D. Son Chief of Party

October 5, 1959 Date



LOCATION NO. 6



SH. 15

RED
ROCK

RED ROCK CREEK

SECTION LINE ROAD

PERRY

APPROX 0.7 MILES

APPROX 10 MILES

U.S. 77

H/W
HIGH WATER DOWN D. 9 FROM
SOUTH BRIDGE SEAT.