

RECEIVED

JUL 28 1969

SURVEY DIVISION

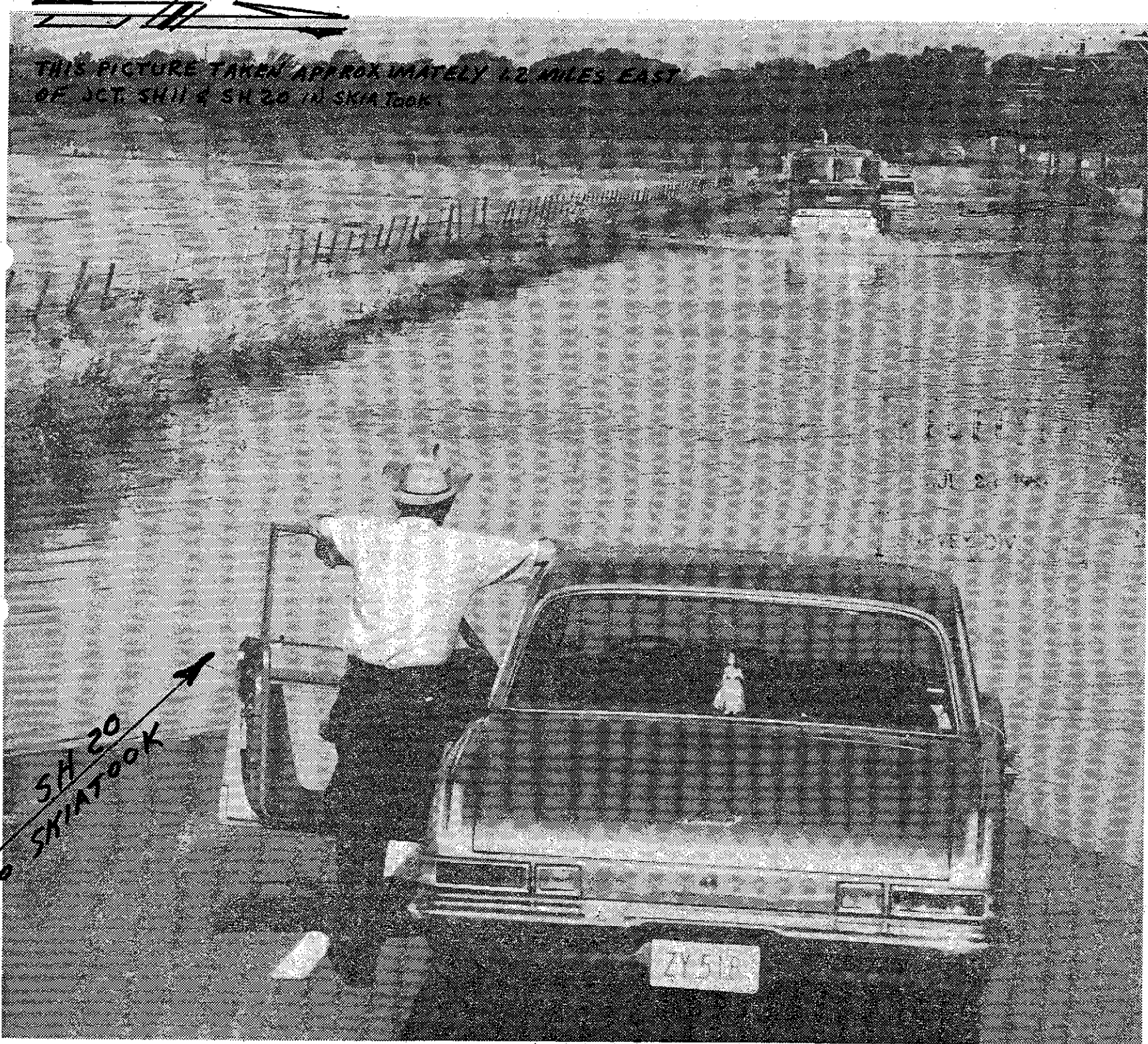
VOL. 75—NO. 150

The Tulsa Tribune

FINAL HOME ☆ ☆ ☆

TULSA, OKLAHOMA, SATURDAY, JUNE 28, 1969

28 PAGE



THIS PICTURE TAKEN APPROXIMATELY 12 MILES EAST OF JCT. SH 11 & SH 20 IN SKIATOOK.

SH 20
TO SKIATOOK

"UNDISPUTED RIGHT OF WAY"—An unidentified man, unable to drive his car through a stretch of highway blocked by the waters of Bird Creek, watches as a large truck fords the highway. This scene occurred on Oklahoma 20, near Bird Creek, which was swollen by recent rainfall in the northeastern

Oklahoma area. Waters from Bird Creek also covered portions of Oklahoma 11, making it impassable to motorists. At 8 a.m., Bird Creek was at 20.64 feet. Flood stage is 21 feet. (Tribune Photo by Lewis Jarrett)