

Very  
Confidentially

By E. W. M.

# The Broken Bow News

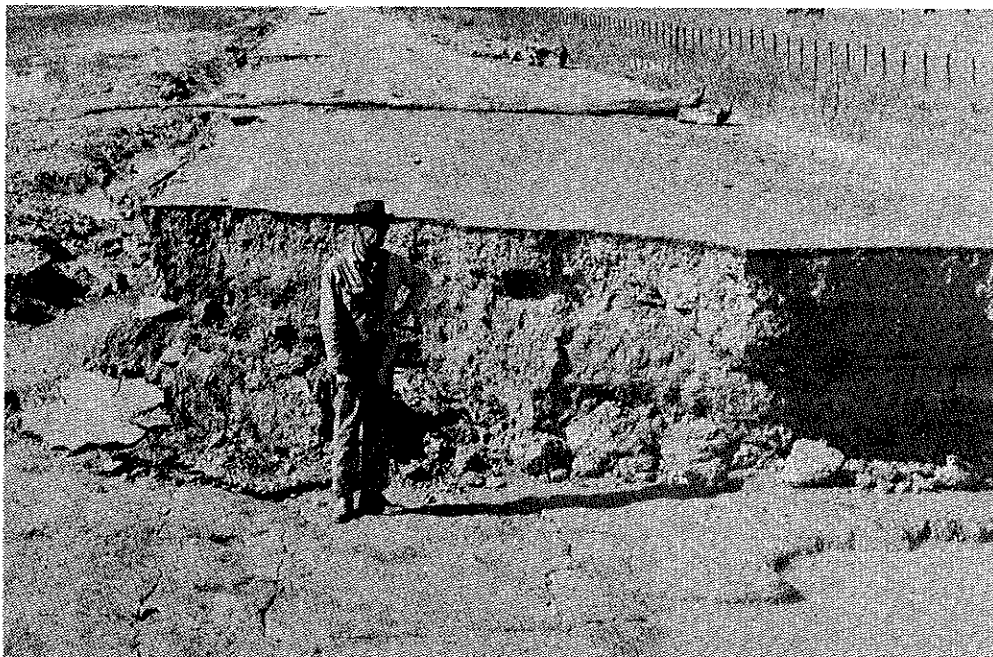
McCURTAIN COUNTY'S ORIGINAL OFFSET NEWSPAPER

SIXTIETH YEAR

BROKEN BOW, OKLAHOMA THURSDAY, NOVEMBER 9, 1972

NUMBER 48

The foliage in Southeastern Oklahoma is just about at its peak now...we have ridden around a little during the past week but the weather has been overcast almost all the time and the hues are not nearly so brilliant as they would be if the sun was bright and clear...never the less, if you want to get a good look we advise you to do it soon...Mother Nature will decide suddenly that fall has moved on out and it is time for all the hardwood leaves to turn brown leaving the only color to be seen the green of the pine trees...when we went across the mountains last week to Talihina we saw some colors which were outstanding but it was a foggy day and we missed out on part of the brilliance...last year the Acme Sand & Gravel was hit hard by the Glover flood as the water rose to a depth of 8 feet in their office...this year, with almost the same amount of water, the Acme crew was ready...their equipment had been moved to higher ground and their loss was far below last year's disastrous lick...cattle losses will be



FLOOD DAMAGE to the county highway between Broken Bow and Garvin was extensive and Ray Burris, county commissioner, is standing in a section of the dump which was washed away in the flood last week. When the water went over the top of the dump, it started an undercutting action which caused damage for a mile and a half section of the road then cut completely through in this 40 foot wide strip.

## No Cocktails For Sooners ; One Question Given Approval

## Nixon Rolls For Victory

President Nixon swept to re-election Tuesday, burying Democratic challenger George McGovern beneath one of history's greatest landslides.

But many Democrats withstood the Nixon tide in massive ticket-splitting.

The president has captured 335 electoral votes in 28 states and led for 105 more late Tuesday with 270 needed for election.

McGovern had carried only Massachusetts with 14 electoral votes, and the District of Columbia, with three.

Nixon trounced McGovern in some of the states where McGovern concentrated his cam-

paign. The President carried New York, Pennsylvania, and West Virginia, for example, all in the Democratic column four years ago.

He captured every one of the five Southern states which went to Alabama Gov. George C. Wallace in the 1968 election.

So, after suffering the narrowest of presidential defeats to John F. Kennedy 12 years ago and winning by a fraction over Hubert H. Humphrey in 1968, Nixon had his mandate.

He had for four years been a minority President, elected with 43.4 per cent of the vote in a three-way race. Now he had his "four more years."

The Nixons voted in