

### Aftermath Of Storm

Flood waters from Kingfisher Creek cover S.H. 33 between Kingfisher and Watonga after heavy rains covered the low land area Sunday. Farm lands were under several

feet of water and a bridge on the highway eight miles west of Kingfisher was washed out.

(Aerial Photo Service)

# Tornado, Hail Pound Stroud

A tornado ripped through Stroud Sunday night, damaging four houses and flipping an airplane.

Baseball-size hail smashed windows in the town and residents, shocked by a double murder earlier in the day, counted damage estimated up to \$150,000.

The twister hit the east edge of town about 8 p.m. as Oklahomans kept a wary eye on the skies.

It was the second straight day of tornado activity and forecasters Sunday night said more is on the way today.

Jim McMahon, Stroud civil defense director, said at least four houses were severely damaged as the twister cut a path about 2½ blocks long. He reported extensive window damage from the large hail.

No injuries were reported. Most residents had taken cover.

Many towns in the state's "tornado alley" had twister sightings Sunday.

Patrol troopers spotted one at Bethal Acres, five miles west of Shawnee. Twisters were confirmed at Lexington, Meeker, Prague and the Camp Creek Dam site near Tulsa as the storms moved out the state around midnight.

Bristow and Sapulpa had heavy thunderstorms before the cells moved on. Unstable weather is in the state forecast until Tuesday as cloudy skies and warm, moist air will cover most of the state.

The first death in the state resulting from a tornado in five years was recorded Saturday evening as Mrs. Angie Silvia, 22, and her three children were swept away as they tried to run for shelter on the Leonard Taylor farm three miles east of Hammon, 150 miles west of Oklahoma City.

Mrs. Silvia's husband, Charles, remained in criti-

## Weather

(Continued From Page 1)

cal condition in an Elk City hospital Sunday night. The Taylor and Silvia homes and a nearby barn were destroyed.

At Watonga, 110-mile-per-hour winds smashed an airplane hangar and destroyed two houses. The winds left houses and two aircraft damaged, as well as numerous broken windows. Almost four inches of rain fell there.

A tornado at Thomas, southwest of Watonga, demolished a service station, extensively damaged the school and gymnasium and overturned a house trailer.

A school, a store and several houses in Omega, 20 miles northwest of Oklahoma City, were hit by a twister, but no areas reported injuries other than the Hammon deaths.

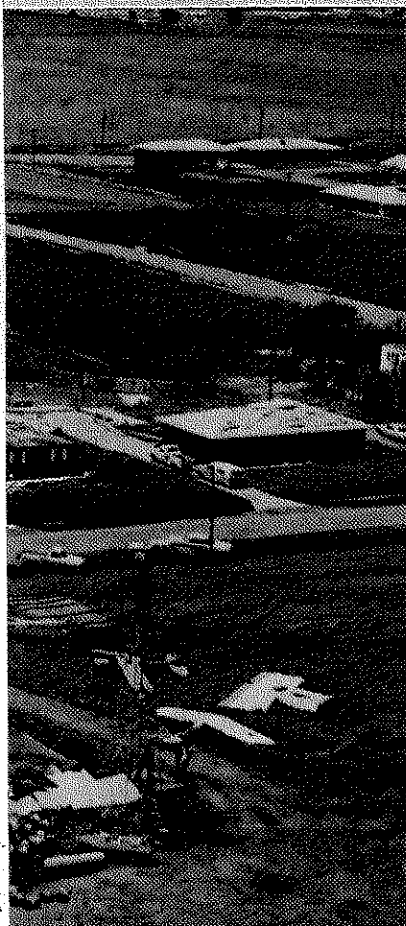
Many cars were damaged in northern Oklahoma City by hail ranging from the size of a pea to as big as baseballs. While tornadoes roared around most sections of northern Oklahoma flood conditions emerged as a result of the heavy rainfall in the Kingfisher-Watonga area.

Rampaging Kingfisher Creek swelled by heavy rains Saturday night erupted from its banks and closed traffic on S.H. 33 between Kingfisher and Watonga. Highway patrol officials reported a bridge washed out on the highway also but said traffic would be resumed if no more rain fell.

Heavy rainfall of five to six inches on the Verdigris and Caney River basins near Bartlesville caused light flooding near Lenapah. Brief overflows are expected at Dover Monday from heavy rains in the Cimarron basin.

SURVEY DIVISION	DATE
GHS	6-14-67
WVW	6-14-67
WNM	6-14-67
GWP	
OCC	6-14-67
GER	
SDD	
IDW	
DP	
BM	
CB	

STATE OF OKLAHOMA  
DEPARTMENT OF HIGHWAYS  
SURVEY DIVISION - JUNE 12, 1967  
SH 33 - WEST OF KINGFISHER  
FILE - KINGFISHER COUNTY  
FLOOD INFORMATION  
SEE SURVEY DIVISION SURVEY  
HIGHWAY INFORMATION  
OBTAINED ON JUNE 12, 1967



by residential area were also

(Aerial Photo Service)

See WEATHER, Page 2