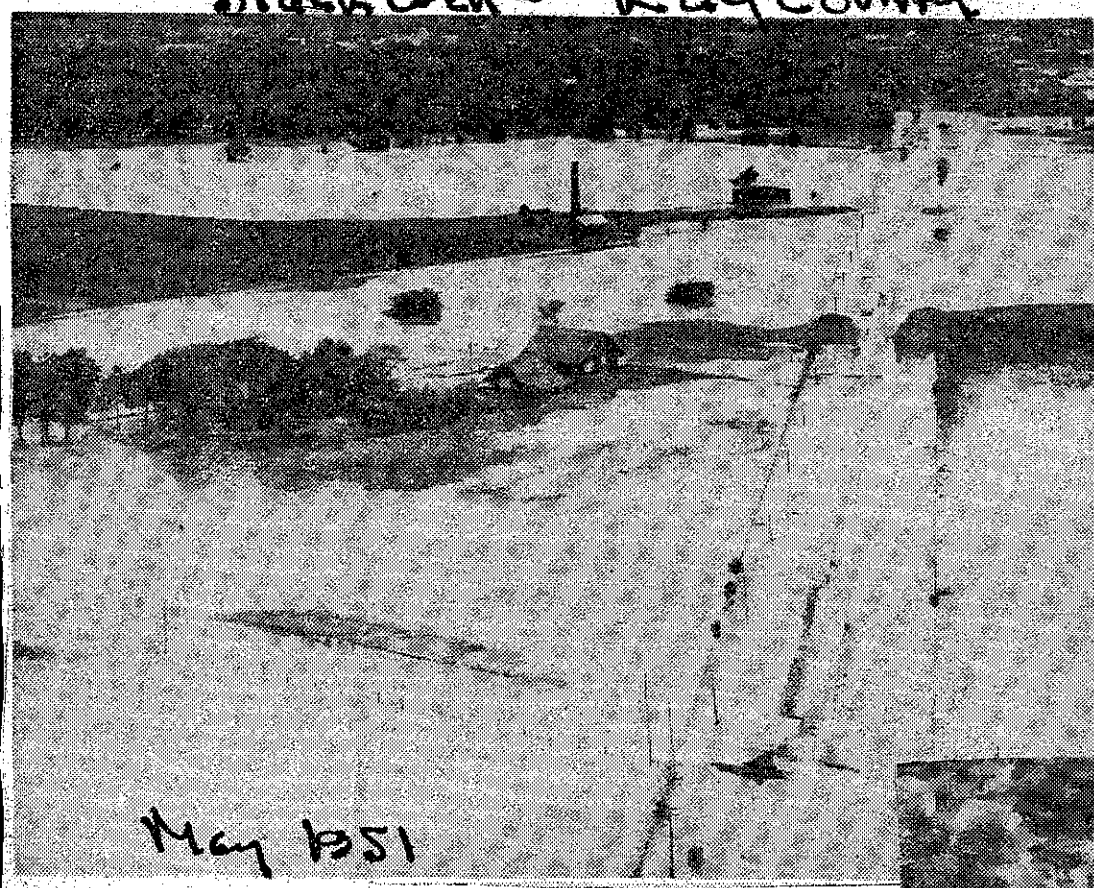


Floodwaters Spread Out

Blackwell - Kay County



May 1951

Floodwaters Saturday looked like this east of Blackwell, where a railroad track was barely distinguishable and a farm home was surrounded. More than 100 homes were flooded in Blackwell by the surging Chikaskia river.



May 1951
Kay County

... But Plenty's Left for Blackwell Area!
The Chikaskia river at Blackwell was falling slowly Saturday morning, as the stream poured into the Salt Fork of the Arkansas south of Tonkawa. The Salt Fork was out south of Ponca City closing U. S. 77. Above is a view of the U. S. 81 bridge on the north edge of Blackwell and of the flood that caused 100 families to be evacuated. (More Photos, Page 6.)