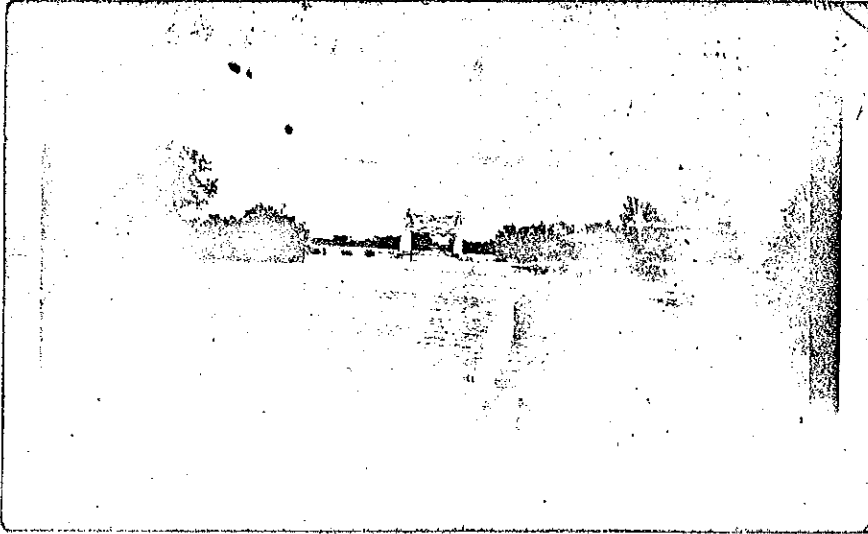


STATE OF OKLAHOMA
DEPARTMENT OF HIGHWAYS
SURVEY DIVISION
SEPTEMBER 27, 1962

SH 28 - MAYES COUNTY



THIS DEPICTS THE FLOOD ON BIG CABIN CREEK BRIDGE BETWEEN ADAIR AND PENSACOLA, STATION 396+ OF SWO 1900, AS IT OCCURRED ON MAY 23, 1943, CONSIDERED AS A RECORD FLOOD, REPRODUCED FROM A SNAPSHOT TAKEN BY AND THE PROPERTY OF MR. HARRY WHEELER OF ROUTE 1, BIG CABIN, OKLAHOMA.

REPRODUCED ON OUR ZEROX MACHINE AS IT COULD NOT BE REPRODUCED BY PHOTOGRAPHIC METHODS. THE ELEVATIONS CHECKED BY CHIEF OF PARTY MORAN ARE: BRIDGE FLOOR ELEV. 637.90, ELEV. OF HIGHWATER 641.7, THEREFORE WATER OVER BRIDGE FLOOR OF 3.8 FEET.

NOTE: ORIGINAL SNAPSHOT RETURNED TO MORAN ON SEPTEMBER 27, 1962.

MC: BRIDGE ENGINEER
MARKHAM RESERVOIR
SWO 1900
DIVISION ENGINEER
FLOOD INFORMATION FILE - MAYES COUNTY