

RECEIVED  
DEC 4 1986  
SURVEY DIVISION

STATE OF OKLAHOMA  
DEPARTMENT OF HIGHWAYS  
SURVEY DIVISION

Survey Division  
Form No. 16  
Rev. Dec. 2, 1974

FLOOD INFORMATION FORM

To be used in obtaining and transmitting flood water elevations for Survey Division office record files. This information to be obtained by all Chiefs of Party or others in their vicinity in times of unusual high water, or at any time available from a reliable source. The elevations can be recorded by level reading, by measurement from bridge floor, in relation to a house, above roadbed or any other dependable, clear manner that fits the situation, the highest order possible to be used. Separate report to be made on each crossing or place obtained.

County Mayes Date highwater occurred October 1, 1986

Highway number US 69 Name of stream Pryor Creek

Direction and distance from nearest town, village or store Approx. 1 mile south of Pryor

Section, Township and Range Section 24, T21N, R18E

Description of Location \_\_\_\_\_

Elevation \_\_\_\_\_ Source of levels \_\_\_\_\_

Method obtained Fennel Level Date obtained October 6, 1986

Did it appear to be  normal  medium  extreme  do not know

Was highwater mark obtained from actual water, drift, local resident, U. S. Engineers, etc.? Actual water marks

Explanatory Remarks Water was 12.1 down from the top of the parapet wall at the Southeast corner of the east bridge on US 69

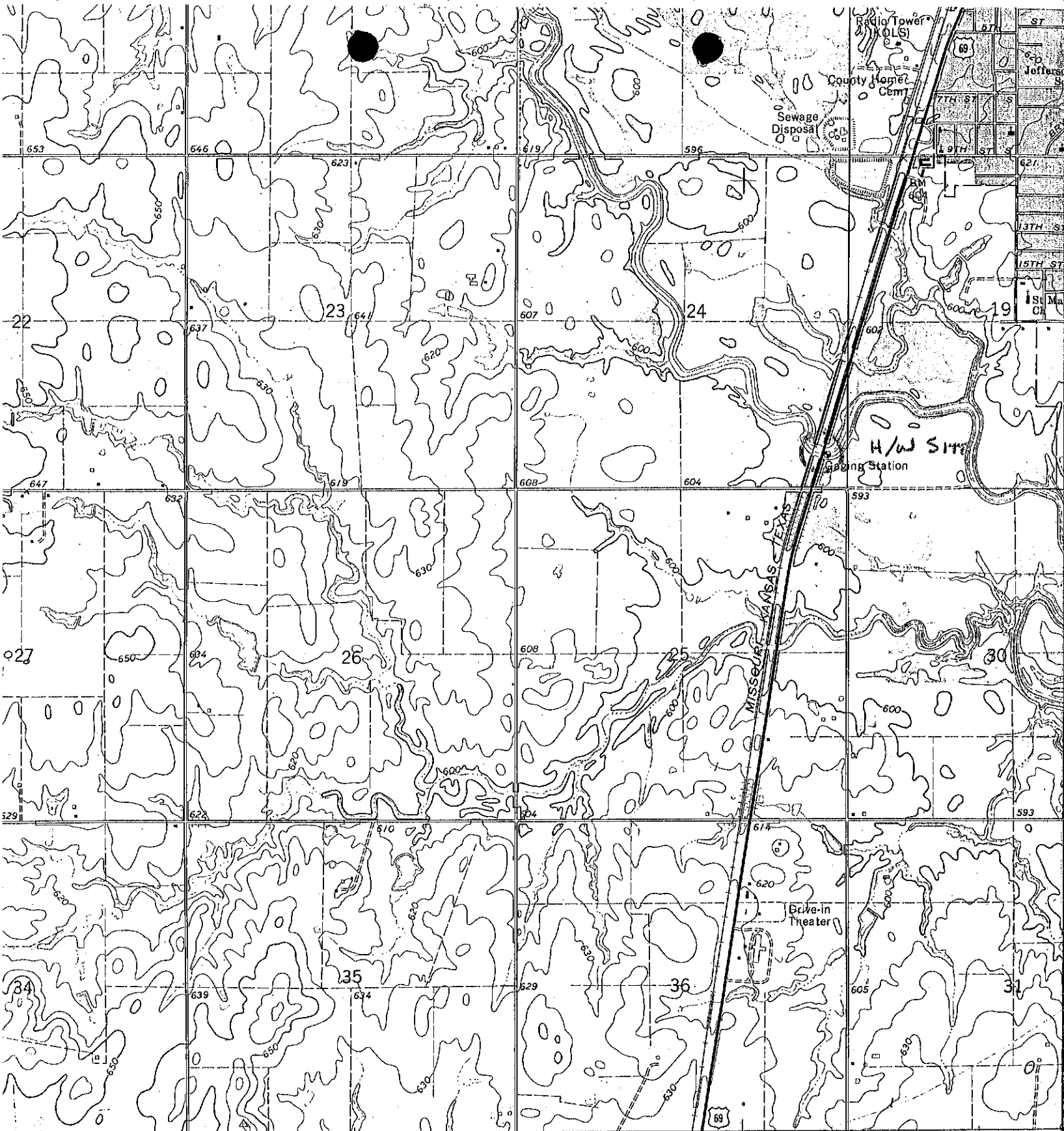
Location to be shown on back of this sheet as a check.

Field Note: To be sent to  
Survey Engineer

James Wayne Deegan  
Location Engineer

October 9, 1986  
Date

LOCATION No. 1



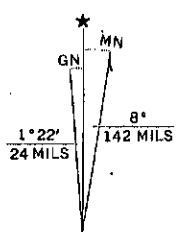
10" 287 288 2 780 000 FEET 289

CHOUTEAU 4.4 MI. WAGONER 21 MI. 20' R. 18 E. R. 19 E.

Map compiled, edited, and published by the Geological Survey in cooperation with the Oklahoma Highway Department, Oklahoma Water Resources Board, and Oklahoma State Soil Conservation Board.

Map compiled by USGS and USC&GS from photogrammetric methods from aerial photography taken 1968. Field checked 1970.

Map is on the 1927 North American datum. The UTM grid is based on Oklahoma coordinate system, north zone. The 600-meter Universal Transverse Mercator grid ticks, however, are based on the 1983 datum.



UTM GRID AND 1970 MAGNETIC NORTH DECLINATION AT CENTER OF SHEET



CONTOUR DATUM

THIS MAP COMPLIES WITH THE STANDARD MAP ACT OF 1946. FOR SALE BY U.S. GEOLOGICAL SURVEY.