

STATE OF OKLAHOMA
DEPARTMENT OF HIGHWAYS
PLANS AND SURVEY DEPARTMENT

FLOOD INFORMATION FORM

To be used in obtaining and transmitting flood water elevations for Plans & Survey office record files. This information to be obtained by all Chiefs of Party in their vicinity in times of unusual high water, or at any time available from a reliable source. The elevations can be recorded by level reading, by measurement from bridge floor, in relation to a house, above roadbed or any other dependable, clear manner that fits the situation, the highest order possible to be used. Separate report to be made on each crossing or place obtained.

County Logan Date highwater occurred May 19, 1949

Highway number U.S. 77 Name of stream Snake Creek

Direction and distance from nearest town, village or store U.S. 77 -

Snake Creek just at the south edge of Guthrie

Section, Township and Range Sec. 17-18-T16N-R2W

Description of Location At a bridge built at Sta 156+ F.A.P. 130E

Method obtained Wve level

Elevation 1.9 Higher than slab in center of R.C. Source of levels _____

Was highwater mark obtained from actual water, drift, local resident, U. S. Engineers, etc? Actual water line mark on Nail Filling Sta & Chipman Filling Sta

Explanatory Remarks This water was caused from a 7" Rain - Obtained by A.B. Stephens and O.D. Clifton

Location to be shown on back of this sheet as a check.

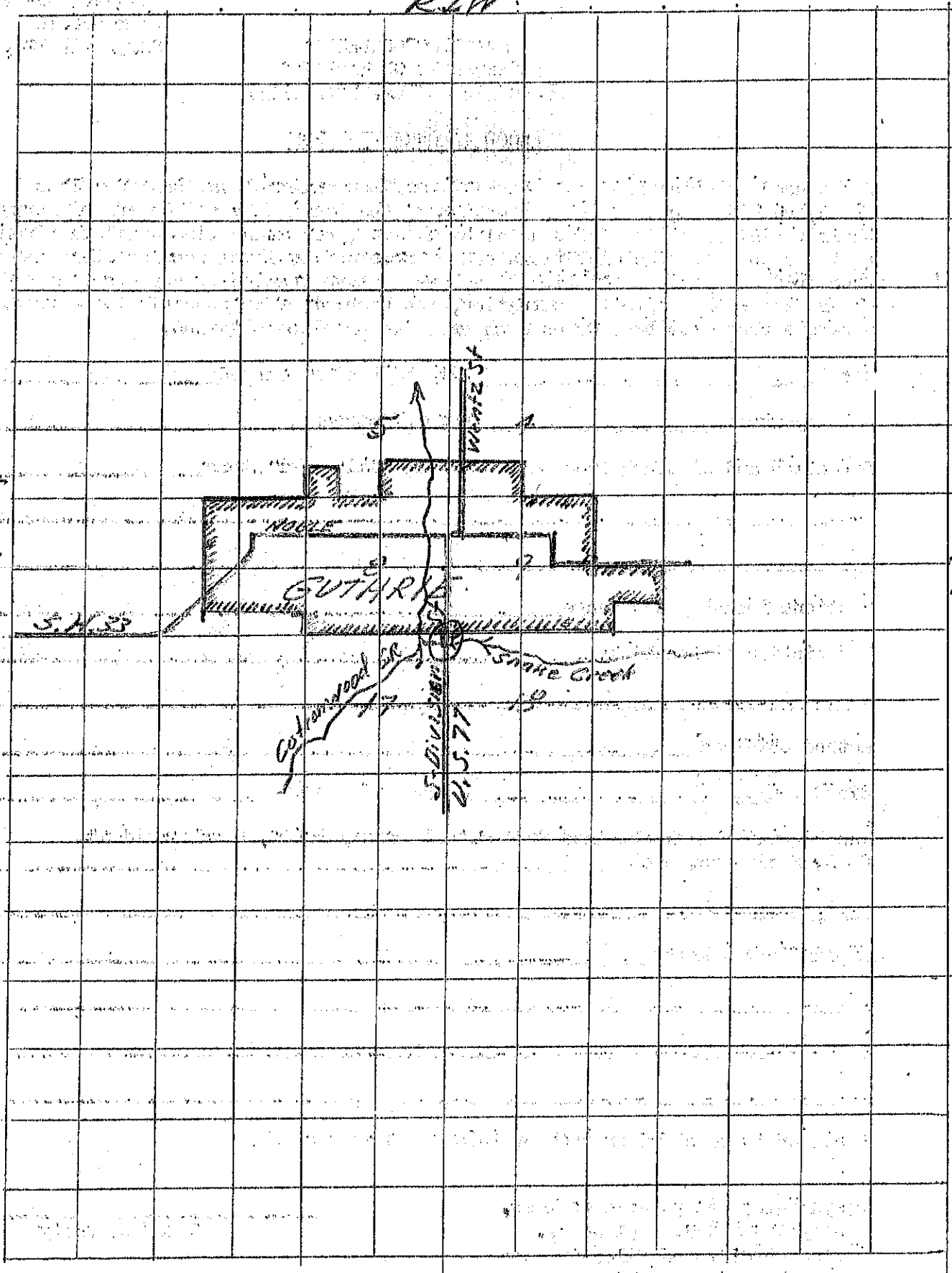
Field Note: To be sent to Engr. of Plans & Survey (1 copy).
Office Note: To be filed in Flood Information by Counties.

A.B. Stephens
RES. Chief of Party Engr.
May 29, 1949
Date

R. 24 W.

T
16
N

T
16
N



S. 1/4

Cottonwood St

21.5.77

Wentz St

GUTHRIE

HOLE

Snake Creek