

STATE OF OKLAHOMA
DEPARTMENT OF HIGHWAYS
PLANS AND SURVEY DEPARTMENT

FLOOD INFORMATION FORM

To be used in obtaining and transmitting flood water elevations for Plans & Survey office record files. This information to be obtained by all Chiefs of Party in their vicinity in times of unusual high water, or at any time available from a reliable source. The elevations can be recorded by level reading, by measurement from bridge floor, in relation to a house, above roadbed or any other dependable, clear manner that fits the situation, the highest order possible to be used. Separate report to be made on each crossing or place obtained.

County Logan Date highwater occurred 19 May 1949

Highway Number SH 33 Name of Stream Cottonwood Creek

Direction and distance from nearest town, village or store Western section of City of Guthrie

Section, Township and Range Sec 8 T 16 N R 2 W

Description of Location From west end of overpass over Santa Fe RR west to 13th Street on SH 74 through Guthrie

Method obtained Ran line of levels from northwest corner of overpass to highwater mark on house

Elevation 7.5' above Source of Levels

Was highwater mark obtained from actual water, drift, local resident, U.S. Engineers, etc.? Highwater mark left on house

Explanatory Remarks

Location to be shown on back of this sheet as a check.

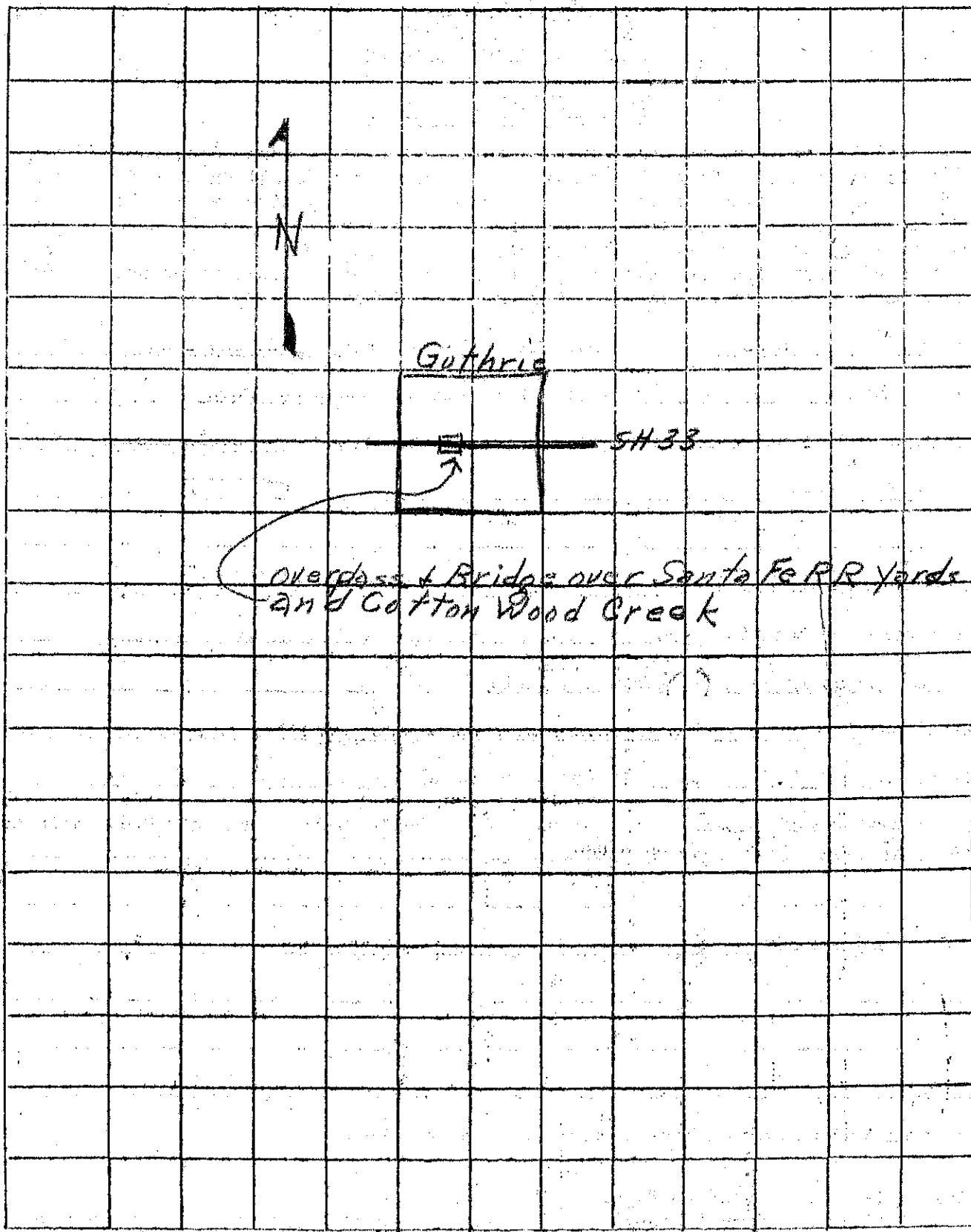
Field Note: To be sent to Engr. of Plans & Survey (1 copy).

Office Note: To be filed in Flood Information by Counties.

A. Montgomery
Chief of Party

Res Engr. 6/6/49
Date

Description of location



Guthrie

SH 33

Overpass & Bridges over Santa Fe RR yards
and Cotton Wood Creek