

SURVEY DIVISION	
CHS	MAY 28-1968
WVW	6-14-68
WNM	6-17-68
GWP	
OCC	6-24-68
GER	
SDD	
RDA	
HT	
OS	

RECEIVED

Survey Division
Form No. 16
Rev. Sept. 10, 1961
MAY 27 1968

STATE OF OKLAHOMA
DEPARTMENT OF HIGHWAYS
SURVEY DIVISION

FLOOD INFORMATION FORM SURVEY DIVISION

To be used in obtaining and transmitting flood water elevations for Survey Division office record files. This information to be obtained by all Chiefs of Party or others in their vicinity in times of unusual high water, or at any time available from a reliable source. The elevations can be recorded by level reading, by measurement from bridge floor, in relation to a house, above roadbed or any other dependable, clear manner that fits the situation, the highest order possible to be used. Separate report to be made on each crossing or place obtained.

County LeFlore Date highwater occurred May 13, 1968 (10:00 PM)

Highway number US 271 Name of stream Mountain Creek

Direction and distance from nearest town, village or store At west edge of Wister, Oklahoma.

Section, Township and Range Section 26, T-6-N, R-24-E

Description of Location On alignment of SWO 2537 (1) - Future US 271 crossing of Mountain Creek and present US 271 which is approximately 250 Ft. south of alignment SWO 2537 (1) and present US 271 Bridge. (Obtained 350 Ft. Rt Sta. 584+00 SWO 2537 (1))

Elevation 488.8 Feet Source of levels Mean Sea Level "USC & GS" (Taken from SWO 2537 (1))

Method obtained ^{High Cors} Wye Level Date obtained May 15, 1968

Did it appear to be normal medium extreme do not know

Was highwater mark obtained from actual water, drift, local resident, U. S. Engineers, etc.? Elevation obtained by Moran & two members of this party from actual water marks and silt left on trees etc.

Explanatory Remarks Flash flood caused from heavy rains near the upper Cavanal Mountain Range. - The rain gauge located at the State Highway Department Maintenance Office at Poteau measured 7.85 inches of rain which fell during the period of May 13th & 14th, 1968.

(For additional High Water elevations see map on back)

Location to be shown on back of this sheet as a check.

Field Note: To be sent to Survey Engineer

Ray Jay Moran
Location Engineer
May 23, 1968
Date

*SWO - 2537 (1)
Project - F-82 (9)*

LOCATION NO. 4

Placed in Level Books & on Plans 6-24-68

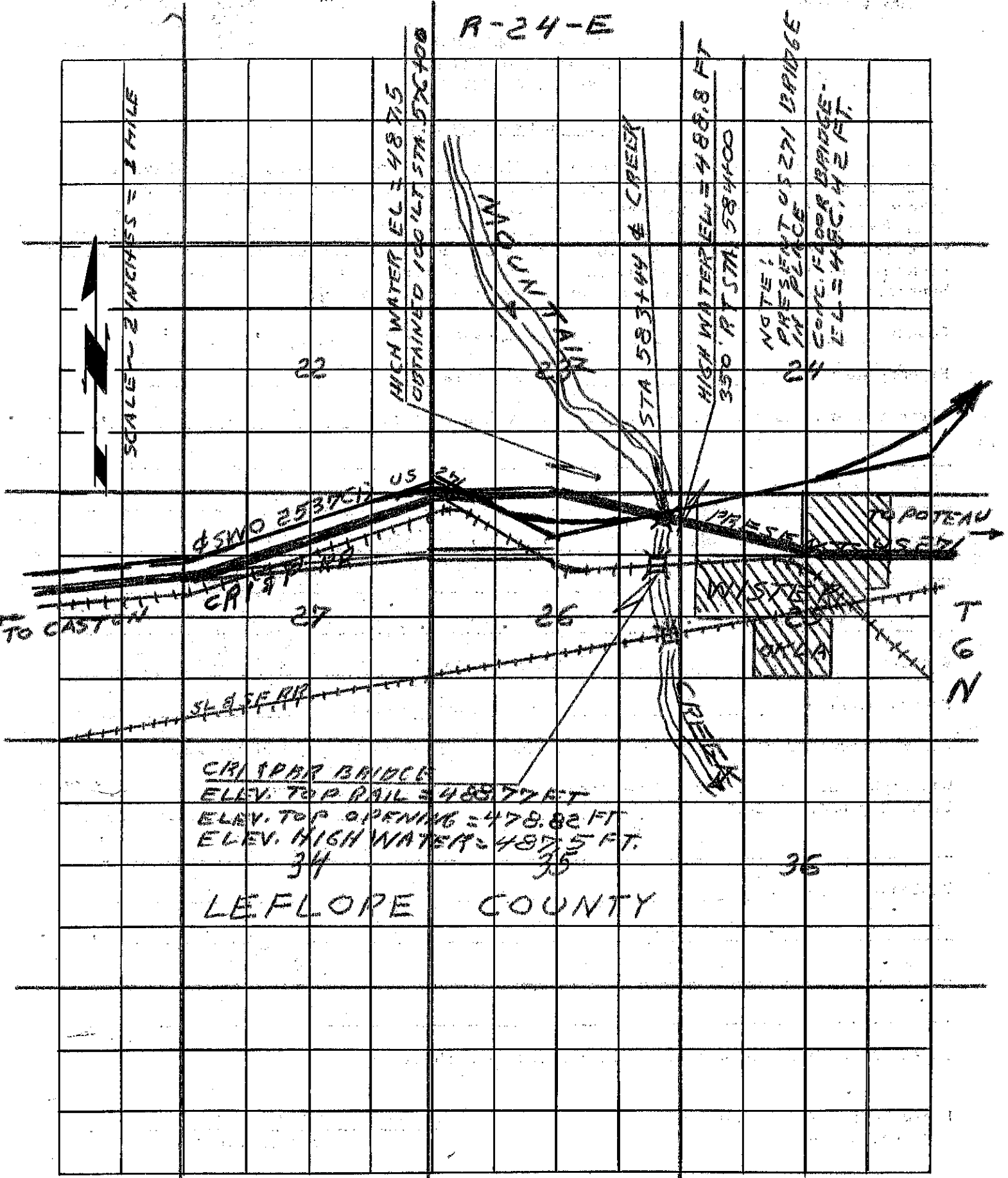
R-24-E

SCALE ~ 2 INCHES = 1 MILE

HIGH WATER EL = 487.5
OBTAINED 100 FT STA. 57X400

HIGH WATER EL = 488.8 FT
350 FT STA. 584400

NOTE:
NO PRESENT OF 271 BRIDGE
IN PLACE
CONC. FLOOR BRIDGE
EL = 480.42 FT.



CRIPPER BRIDGE
ELEV. TOP RAIL = 488.77 FT
ELEV. TOP OPENING = 478.82 FT
ELEV. HIGH WATER = 487.5 FT.

LEFLORE COUNTY

T
6
2