

RECEIVED
DEC 4 1986
SURVEY DIVISION

STATE OF OKLAHOMA
DEPARTMENT OF HIGHWAYS
SURVEY DIVISION

Survey Division
Form No. 16
Rev. Dec. 2, 1974

FLOOD INFORMATION FORM

To be used in obtaining and transmitting flood water elevations for Survey Division office record files. This information to be obtained by all Chiefs of Party or others in their vicinity in times of unusual high water, or at any time available from a reliable source. The elevations can be recorded by level reading, by measurement from bridge floor, in relation to a house, above roadbed or any other dependable, clear manner that fits the situation, the highest order possible to be used. Separate report to be made on each crossing or place obtained.

County LeFlore Date highwater occurred October 6, 1986

Highway number 9 Name of stream Poteau, River

Direction and distance from nearest town, village or store Approx. 1.2 miles west
of Pocola, Okla

Section, Township and Range Section 1 & 12, T9N, R26 E

Description of Location _____

Elevation _____ Source of levels _____

Method obtained Fennel Level Date obtained October 7, 1986

Did it appear to be normal medium extreme do not know

Was highwater mark obtained from actual water, drift, local resident,
U. S. Engineers, etc.? Actual water marks and residue

Explanatory Remarks Water was 20.4 below top of NE curb (Hubguard) of the Poteau
River Bridge.

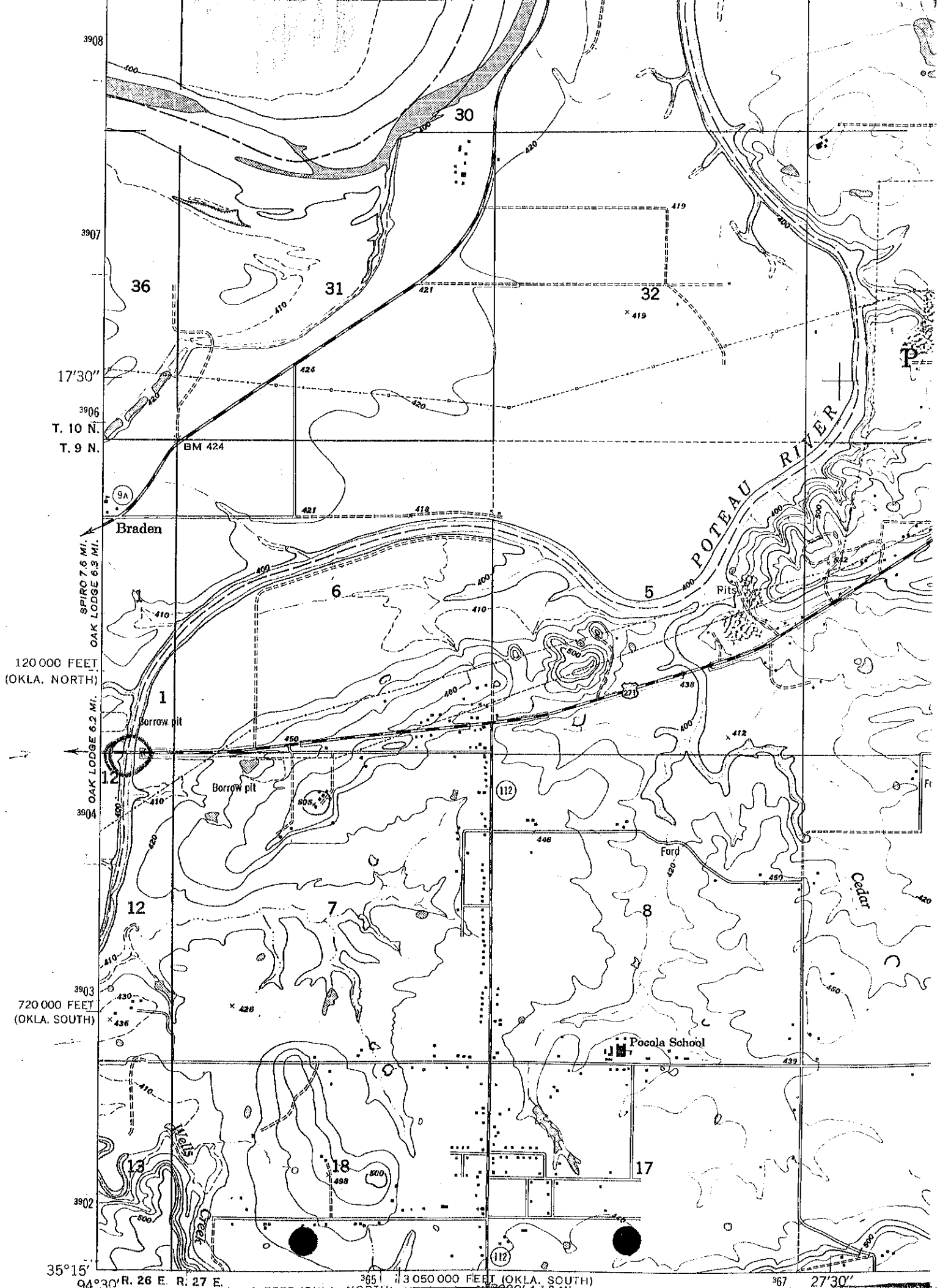
Location to be shown on back of this sheet as a check.

Field Note: To be sent to
Survey Engineer

James Wayne Rogers
Location Engineer

October 9, 1986
Date

LOCATION No. 7



3908

3907

17°30'

3906

T. 10 N.

T. 9 N.

BM 424

Braden

SPIRO 7.6 MI.
OAK LODGE 6.3 MI.

120 000 FEET
(OKLA. NORTH)

OAK LODGE 6.2 MI.

3904

3903
720 000 FEET
(OKLA. SOUTH)

3903

3902

35°15'
94°30' R. 26 E. R. 27 E.

365 | 3 050 000 FEET (OKLA. SOUTH)

367 27°30'

30

36

31

32

6

5

1

12

7

8

13

18

17

POTEAU RIVER

Borrow pit

Borrow pit

Ford

Pocola School

Cedar

9A

112

112

P

Ft

9A

9A

9A

9A

9A

9A

9A

9A

9A

9A

9A

9A

9A

9A

9A

9A

9A

9A

9A

9A

9A

9A

9A

9A

9A

9A

9A

9A

9A

9A

9A

9A

9A

9A

9A

9A

9A

9A

9A

9A

9A

9A

9A

9A

9A

9A

9A

9A

9A

9A

9A

9A

9A

9A

9A

9A

9A

9A

9A

9A

9A

9A

9A

9A

9A

9A

9A

9A

9A

9A

9A

9A

9A

9A

9A

9A

9A

9A

9A

9A

9A

9A

9A

9A

9A

9A

9A

9A

9A

9A

9A

9A

9A