

|                 |             |
|-----------------|-------------|
| SURVEY DIVISION |             |
| ✓ GHS           | MAY 28 1968 |
| ✓ WWV           | 6-14-68     |
| ✓ WNM           | 6-17-68     |
| ✓ CWD           |             |
| ✓ OCC           | 6-22-68     |
| GER             |             |
| SDD             |             |
| RDA             |             |
| HFJ             |             |
| GSS             |             |

Survey Division  
Form No. 16  
Rev. Sept. 10, 1961

STATE OF OKLAHOMA  
DEPARTMENT OF HIGHWAYS  
SURVEY DIVISION

FLOOD INFORMATION FORM

To be used in obtaining and transmitting flood water elevations for Survey Division office record files. This information to be obtained by all Chiefs of Party or others in their vicinity in times of unusual high water, or at any time available from a reliable source. The elevations can be recorded by level reading, by measurement from bridge floor, in relation to a house, above roadbed or any other dependable, clear manner that fits the situation, the highest order possible to be used. Separate report to be made on each crossing or place obtained.

County LeFlore Date highwater occurred May 13, 1968

Highway number US 59 Name of stream Poteau River

Direction and distance from nearest town, village or store Approximately 4 1/2 miles south of Poteau, Oklahoma.

Section, Township and Range Section 14, T-6-N, R-25-E.

Description of Location High water elevation obtained at west end of present US 59 Steel Truss, concrete floor bridge.

Elevation 7.6 Feet below BM (BM described below) ? Source of levels \_\_\_\_\_

Method obtained Wye Level Date obtained May 15, 1968

Did it appear to be  normal  medium  extreme  do not know

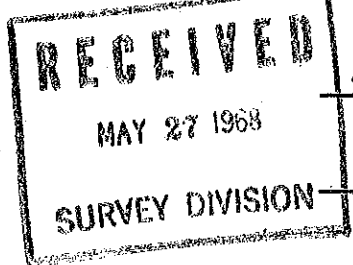
Was highwater mark obtained from actual water, drift, local resident, U. S. Engineers, etc.? Elevation obtained by Moran and two members of this party. Obtained from silt marks left on trees, etc., at west end of bridge approximately 50 feet north and, or south of end of bridge.

Explanatory Remarks Water overflowed present US 59 approximately 800 feet west of bridge in low spot on highway for a few hours. - The rain guage at the State Highway Department Maintenance Office at Poteau measured 7.85 inches of rain which fell during May 13th & 14th, 1968. Water was back within the river banks at the time this high water was obtained.

× BM = Box on SE Corner West Concrete Bridge Abutment, West end bridge. 3-13-73 - Location Engineer H. G. Uselton made level tie to this bench mark under SWO 2993(1). EL BM=463.42 EL Highwater=455.8

Location to be shown on back of this sheet as a check.

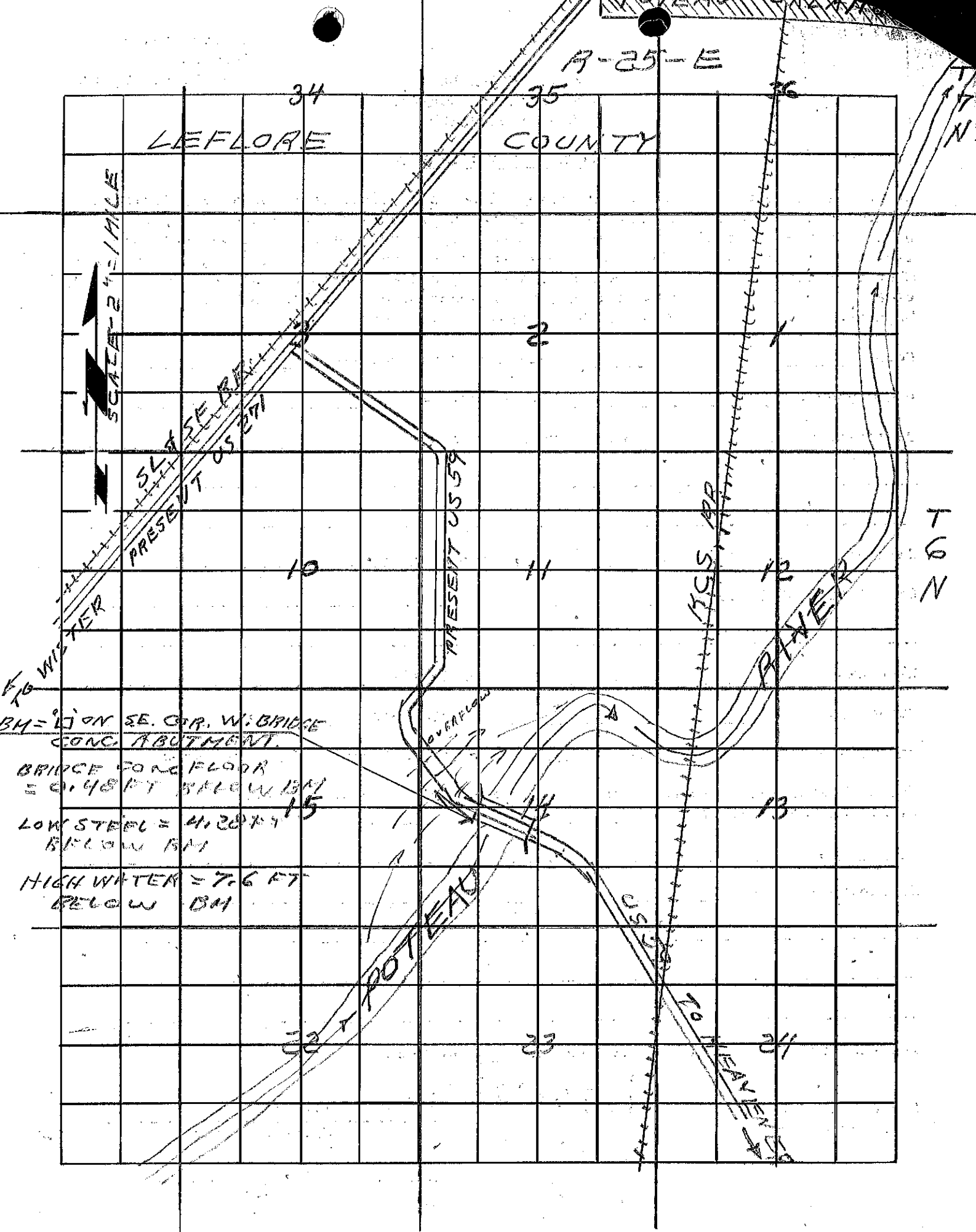
Field Note: To be sent to Survey Engineer



Russ Ray Moran  
Chief of Party  
Location Engineer  
May 24, 1968  
Date

SWO - NONE  
Project - SAP 1002 (1)

LOCATION NO 15



LEFLORE COUNTY

A-25-E

SCALE 2" = 1 MILE

BM = 11 ON SE. COR. W. BRIDGE  
 CONC. ABUTMENT.  
 BRIDGE CONC. FLOOR  
 = 0.48 FT BELOW BM  
 LOW STEEL = 4.28 FT  
 BELOW BM  
 HIGH WATER = 7.6 FT  
 BELOW BM

PRESENT US 271  
 SLIP SE. BRIDGE

PRESENT US 59

US 59

RIVER

POTEAU

US 59

US 59

T 26 N

T 27 N

34

35

36

10

11

12

15

13

20

21

2

OVERFLOW

TO WATER



USERTON CALLED

ELEV. MORAN B.M. 463.92

MORAN H.W. ELEV. 455.8

PROFILE - BETWEEN OVERFLOW SR.

|      |       |        |   |
|------|-------|--------|---|
| STA. | 0+00  | 458.63 | NORTH END 1ST<br>OVERFLOW STR. NO.<br>MAIN BRIDGE |
|      | 1+00  | 457.53 |   |
|      | 2+00  | 455.92 |   |
|      | 3+    | 454.49 |   |
|      | 4+00  | 453.33 |   |
|      | 5+00  | 453.20 |   |
|      | 6+00  | 452.91 |   |
|      | 7+00  | 452.61 |   |
|      | 8+00  | 452.74 |   |
|      | 9+00  | 452.67 |   |
|      | 10+   | 453.29 |   |
|      | 11-   | 454.36 |   |
|      | 12+00 | 456.19 |   |
|      | 13    | 457.41 |   |
|      | 14+00 | 458.46 |   |
|      | +13   | 458.61 | SOUTH END 2ND<br>OVERFLOW STR. NO.<br>MAIN BRIDGE |

THIS INFORMATION OBTAINED BY H.G. USERTON  
MARCH 12, 1973

FILE: SNO. 2993(1)