

STATE OF OKLAHOMA
DEPARTMENT OF HIGHWAYS
SURVEY DIVISION

Survey Division
Form No. 16
Rev. Dec. 2, 1974

FLOOD INFORMATION FORM

To be used in obtaining and transmitting flood water elevations for Survey Division office record files. This information to be obtained by all Chiefs of Party or others in their vicinity in times of unusual high water, or at any time available from a reliable source. The elevations can be recorded by level reading, by measurement from bridge floor, in relation to a house, above roadbed or any other dependable, clear manner that fits the situation, the highest order possible to be used. Separate report to be made on each crossing or place obtained.

County LeFlore Date highwater occurred 5/2/1990

Highway number U.S. 59 Name of stream Arkansas River

Direction and distance from nearest town, village or store Approx. 10 miles south of Sallisaw.

Section, Township and Range Sec 9 T10N R24E

Description of Location Below Robert S. Kerr Lock and Dam on south side Arkansas River and west side U.S. 59, approx 10 miles south of Sallisaw.

Elevation _____ Source of levels _____

Method obtained Fennel Level Date obtained 5/3/1990

Did it appear to be normal medium extreme do not know

Was highwater mark obtained from actual water, drift, local resident, U. S. Engineers, etc.? actual water

Explanatory Remarks top water was 2.6 below top 1/2" iron pin, Mon. Mo. L-40-212 west of SW cor. of bridge.

Location to be shown on back of this sheet as a check.

Field Note: To be sent to
Survey Engineer

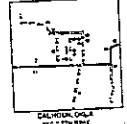
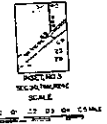
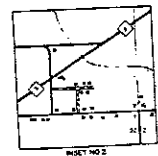
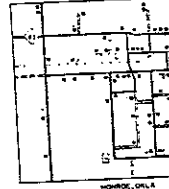
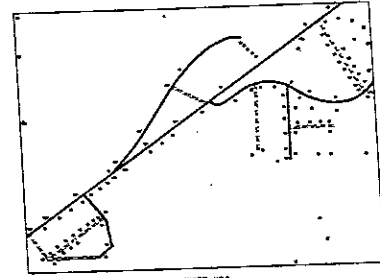
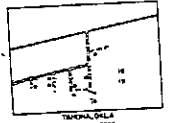
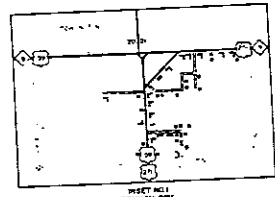
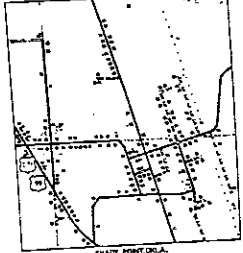
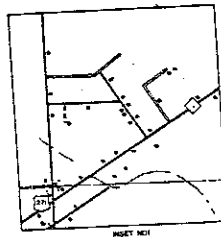
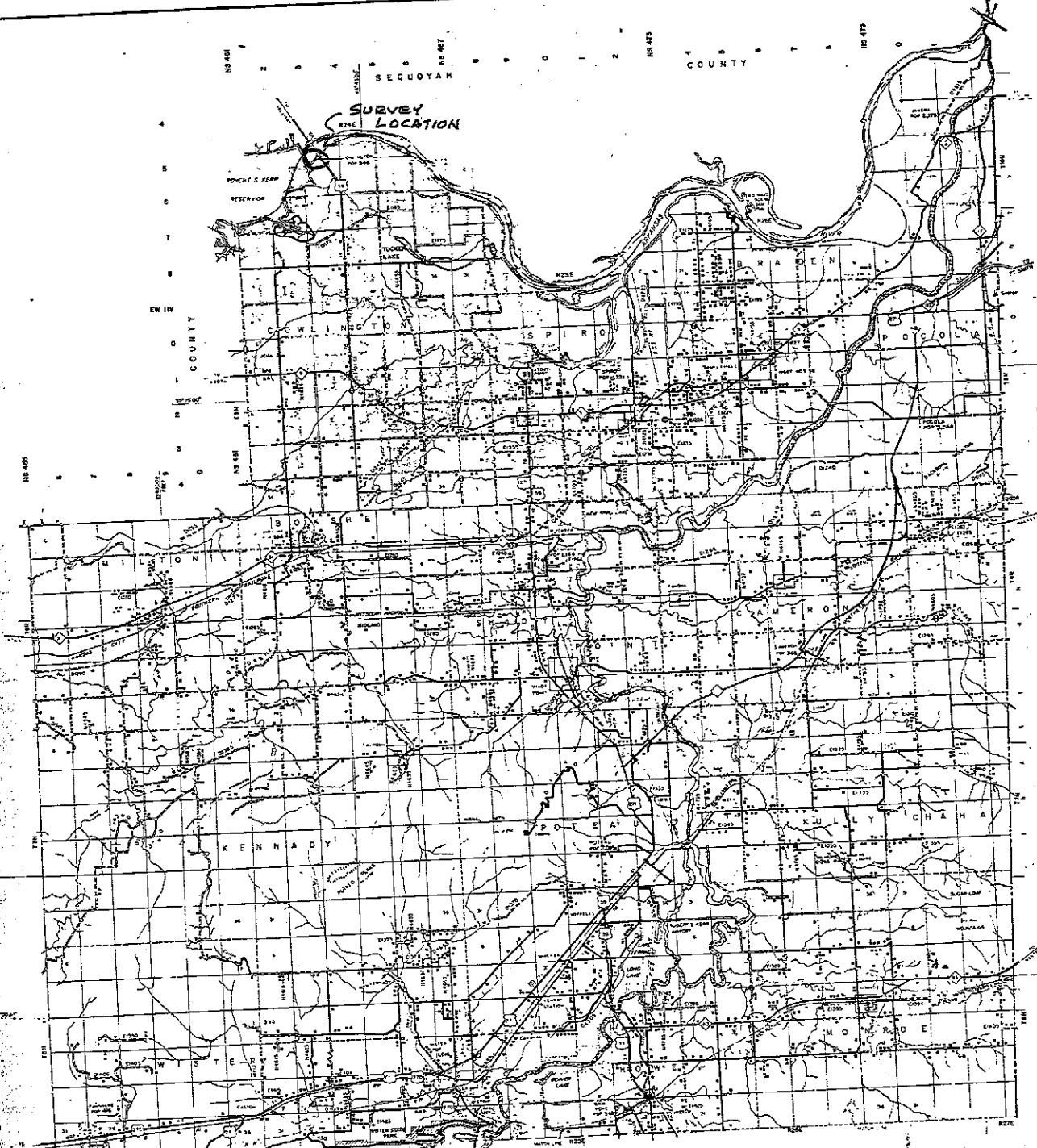
Jan R. [Signature]
Professional Land Surveyor

6/13/90
Date

Copy to Bridge Div. 6-19-90

Copy with map to Bridge 8-9-90

LOCATION NO. 21



NOT FOR RESALE GENERAL HIGHWAY MAP LE FLORE COUNTY OKLAHOMA

Copyright © 1968 by the State of Oklahoma, Department of Transportation, Oklahoma Highway Department. Printed and Sold by Oklahoma City Oklahoma 73109