

STATE OF OKLAHOMA  
DEPARTMENT OF HIGHWAYS  
SURVEY DIVISION

FLOOD INFORMATION FORM

To be used in obtaining and transmitting flood water elevations for Survey Division office record files. This information to be obtained by all Chiefs of Party or others in their vicinity in times of unusual high water, or at any time available from a reliable source. The elevations can be recorded by level reading, by measurement from bridge floor, in relation to a house, above roadbed or any other dependable, clear manner that fits the situation, the highest order possible to be used. Separate report to be made on each crossing or place obtained.

County KIOWA Date highwater occurred 10-20-83

Highway number S.H. 9 Name of stream RAINY MOUNTAIN CREEK

Direction and distance from nearest town, village or store EAST EDGE OF MOUNTAIN VIEW, OKLAHOMA

Section, Township and Range SECTION 12, T-7-N, R-15-W

Description of Location 7.9' ABOVE BRIDGE SEAT ON WEST END OF BRIDGE.

Elevation 1327.8 Source of levels FAP 271 -B PLANS

Method obtained HAND LEVEL Date obtained 10-25-83

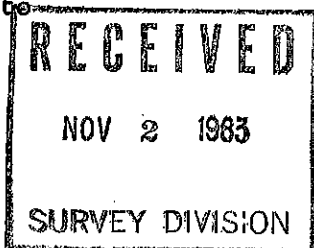
Did it appear to be  normal  medium  extreme  do not know

Was highwater mark obtained from actual water, drift, local resident, U. S. Engineers, etc.? DRIFT IN TREES BY END OF BRIDGE.

Explanatory Remarks EXTREME H.W. OCCURRED FROM APPROX. 12 " RAIN IN A 3 DAY PERIOD. PREVIOUS EXTREME H.W. MARK OCCURRED IN MAY 1949 - ELEV. 1326.4

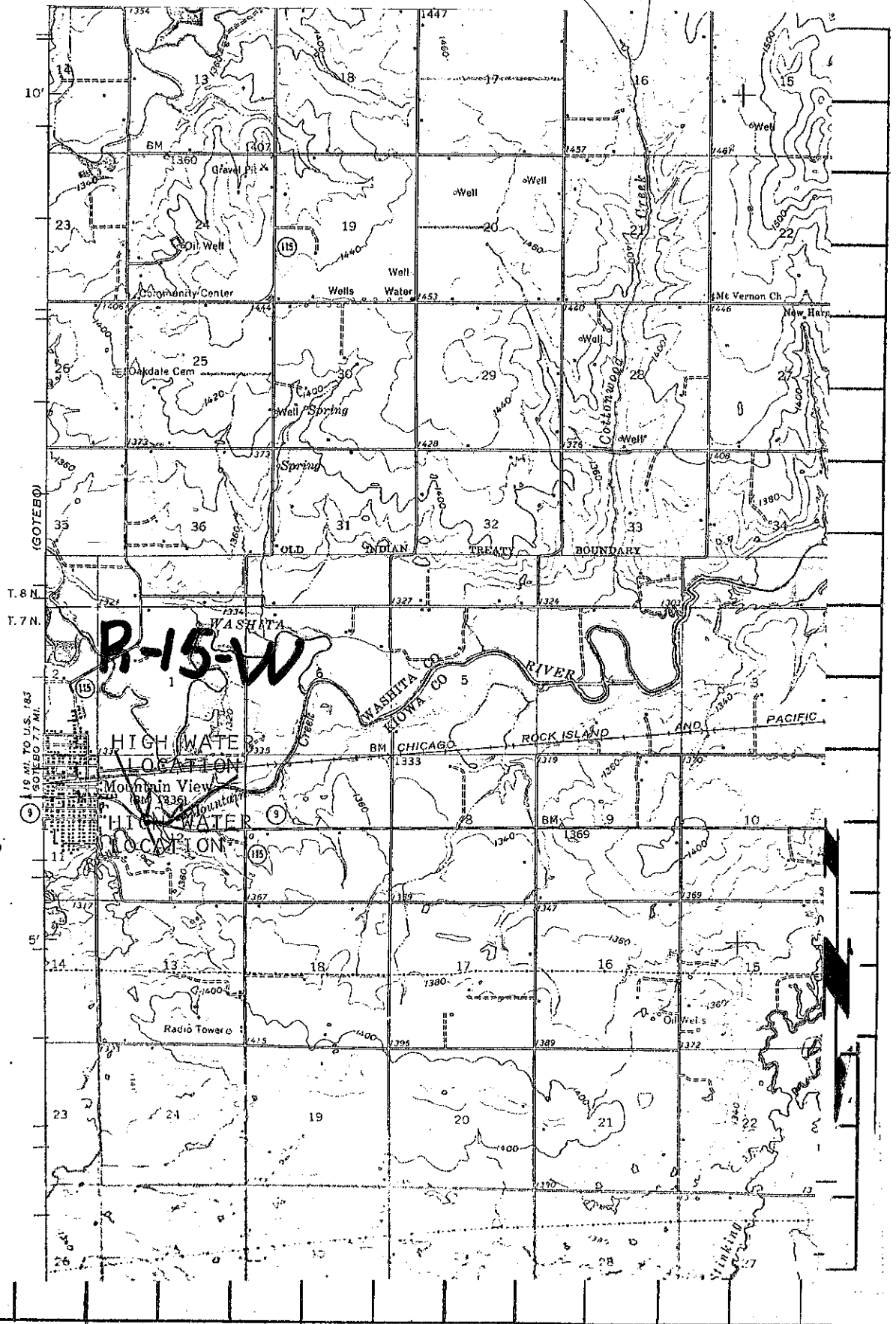
Location to be shown on back of this sheet as a check

Field Note: To be sent to  
Survey Engineer



*James Walden*  
Location Engineer

OCTOBER 26, 1983  
Date



T  
7  
N

R-15-W

HIGH WATER LOCATION

MOUNTAIN VIEW

HIGH WATER LOCATION

MOUNTAIN VIEW

10 MI. TO U.S. 183  
50 MI. TO U.S. 174