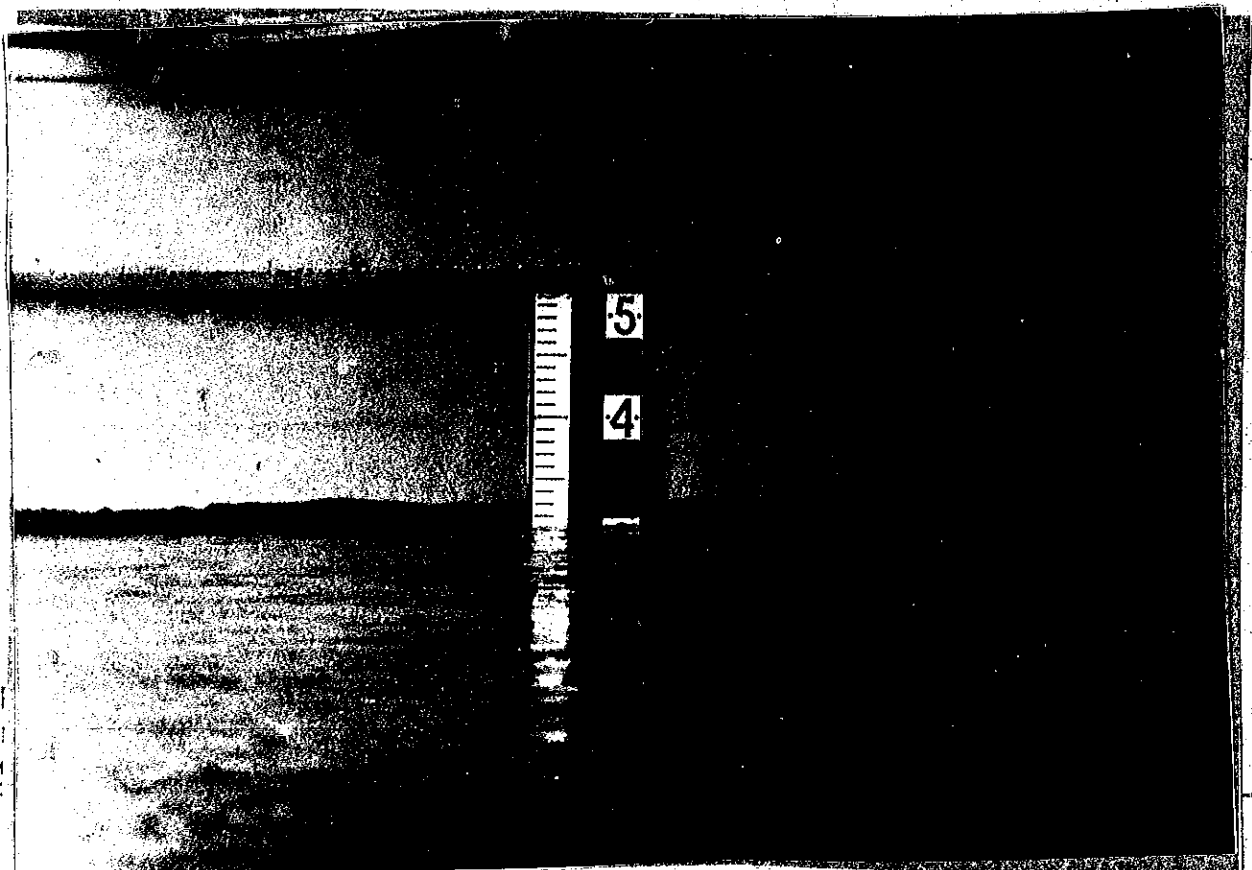


STATE OF OKLAHOMA
DEPARTMENT OF HIGHWAYS
SURVEY DIVISION

SD Form No. 40
12-18-69

THIS FORM IS FOR IDENTIFYING, EXPLAINING
AND RECORDING INFORMATIVE PHOTOGRAPHS.

1. Location KINFISHER CREEK BRIDGE ON U.S. 81 AT NORTH EDGE OF
KINGFISHER, OKLAHOMA. (PHOTO DEPICTES WATER CRESTING AT 23 FEET
ABOVE FLOOD STAGE)
2. Subject EXTREME HIGHWATER CRESTED AT THIS BRIDGE AT 2:00 PM ON
MAY 21, 1977.
3. Purpose NOTE: THIS HIGHWATER WAS CAUSED FROM 4" TO 8" RAINS IN AND
AROUND KINGFISHER OVERNIGHT ON MAY 20, 1977.
4. For Use KINGFISHER COUNTY'S FREE PRESS NEWSPAPER TOOK PHOTOGRAPH
AT 2:00 PM MAY 21, 1977. WATER ELEV. 1042.2
5. History and Explanations THIS HIGHWATER IS 3' BELOW BRIDGE SEAT
(SOUTH END OF BRIDGE) CREST ELEV. 1042.2
(LEVEL DATUM FROM S.A.P. NO. 927(2) - U.S. 81 PLANS)



DIST
Of
C
Inst

DEWAYNE WALDEN
LOC. ENGR.
6-9-77 Loc. No. 6