

Noted: INFO IN RED OBTAINED BY VAUGHAN & CIBENLITT 9/12/61

Plans & Survey Dept.
Form No. 16
Rev. July 10, 1947

STATE OF OKLAHOMA
DEPARTMENT OF HIGHWAYS
PLANS AND SURVEY DEPARTMENT

FLOOD INFORMATION FORM

To be used in obtaining and transmitting flood water elevations for Plans & Survey office record files. This information to be obtained by all Chiefs of Party in their vicinity in times of unusual high water, or at any time available from a reliable source. The elevations can be recorded by level reading, by measurement from bridge floor, in relation to a house, above roadbed or any other dependable, clear manner that fits the situation, the highest order possible to be used. Separate report to be made on each crossing or place obtained.

County Kingfisher Date highwater occurred SEPT. 13, 1961 & OCT. 4, 1955
Highway number SH 33 Name of stream UNCLE JOHNS CREEK
Direction and distance from nearest town, village or store ON SH 33 ON EAST SIDE OF KINGFISHER.

Section, Township and Range SEC. 15 - T16N R7W.

Description of Location _____

Method obtained WYE LEVEL

Elevation 1045.59 Source of levels USCEGS

Was highwater mark obtained from actual water, drift, local resident, U. S. Engineers, etc? DRIFT & SILT.

Explanatory Remarks obtained by G.H. Stout & W.N. McLaughlin
From clearly defined silt & drift, obtained Oct. 4, 1955
SEPT. 13, 1961 - OBTAINED FROM WELL DEFINED SILT MARKS.

Location to be shown on back of this sheet as a check.

Field Note: To be sent to Engr. of Plans & Survey (1 copy).
Office Note: To be filed in Flood Information by Counties.

W.N. McLaughlin
Chief of Party
Oct. 10, 1955
Date

Location No 3

R. 7 W

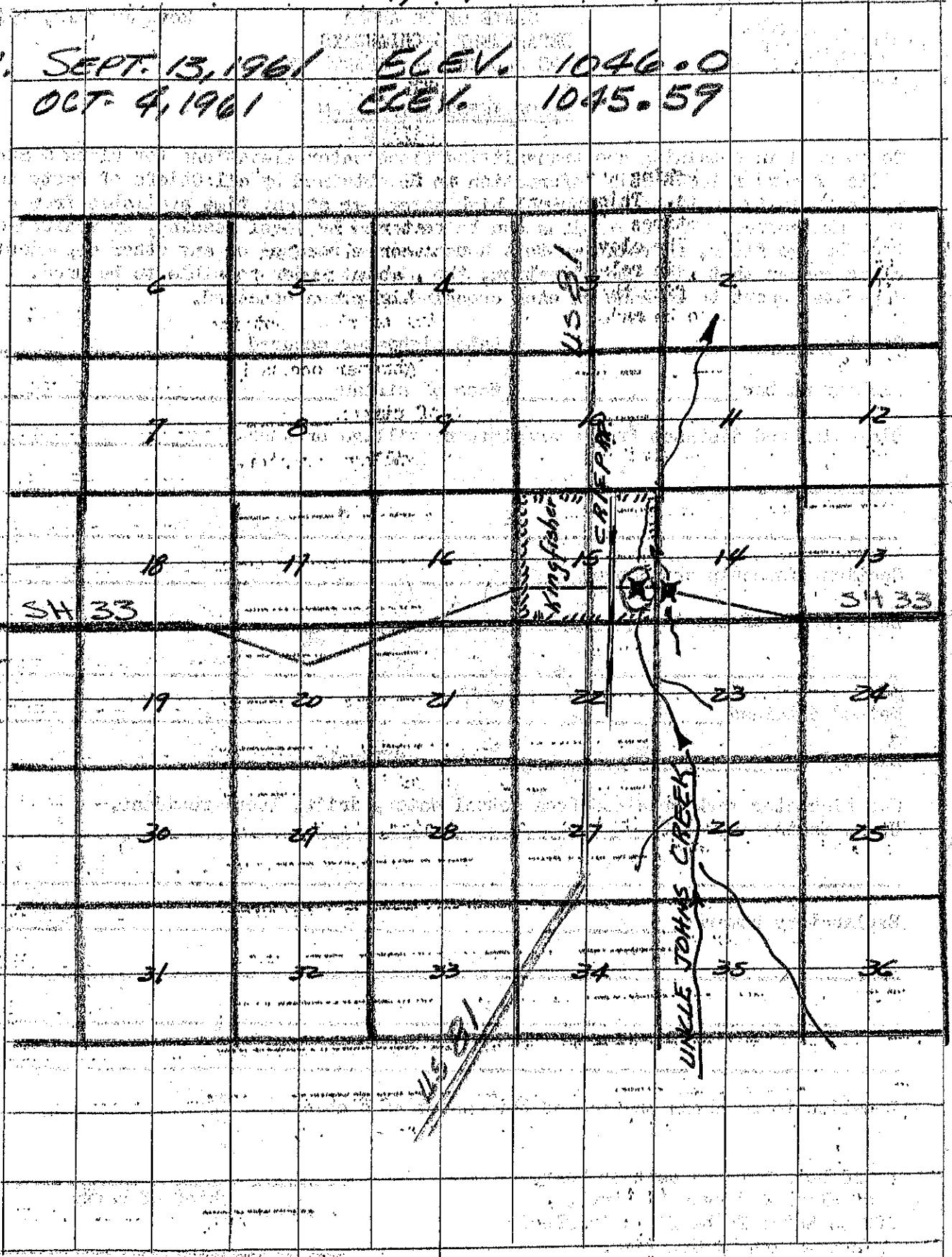
H.W.
H.W.

SEPT. 13, 1961
OCT. 4, 1961

ELEV. 1046.0
ELEV. 1045.59

T
16
N

T
16
N



R 7 W