

STATE OF OKLAHOMA  
DEPARTMENT OF HIGHWAYS  
SURVEY DIVISION

FLOOD INFORMATION FORM

To be used in obtaining and transmitting flood water elevations for Survey Division office record files. This information to be obtained by all Chiefs of Party or others in their vicinity in times of unusual high water, or at any time available from a reliable source. The elevations can be recorded by level reading, by measurement from bridge floor, in relation to a house, above roadbed or any other dependable, clear manner that fits the situation, the highest order possible to be used. Separate report to be made on each crossing or place obtained.

County Kingfisher Date highwater occurred 9/17/65

Highway number S.H. 33 Name of stream Campbell Creek

Direction and distance from nearest town, village or store 2 3/4 miles west of county line on S.H. 33

Section, Township and Range Section 27, 22, T16N, R5W

Description of Location Bridge over Campbell Creek, 2 3/4 miles west of county line on S.H. 33

Elevation "See remark s" Source of levels \_\_\_\_\_

Method obtained with wye level & Philadelphia rod Date obtained 9/29/65

Did it appear to be  normal  medium  extreme  do not know

Was highwater mark obtained from actual water, drift, local resident, U. S. Engineers, etc.? Drift & silt on bridge

Explanatory Remarks Highwater was 5.7 ft. below  $\bar{C}$  of bridge floor at the east end. The water was 0.5 ft. above the bridge floor on a small bridge approx  $\frac{1}{4}$  mile east of campbell creek. Highwater was caused from a rain of 8 to 10 inches over a period of approx. 12 hours. This information was obtained by A. W. Ziegelgruber and B. D. Roden.

Location to be shown on back of this sheet as a check.

Field Note: To be sent to Survey Engineer

A. W. Ziegelgruber  
~~Chief of Party~~ Chief of Party  
~~Location Engineer~~  
December 20, 1965  
Date

LOCATION NO 4

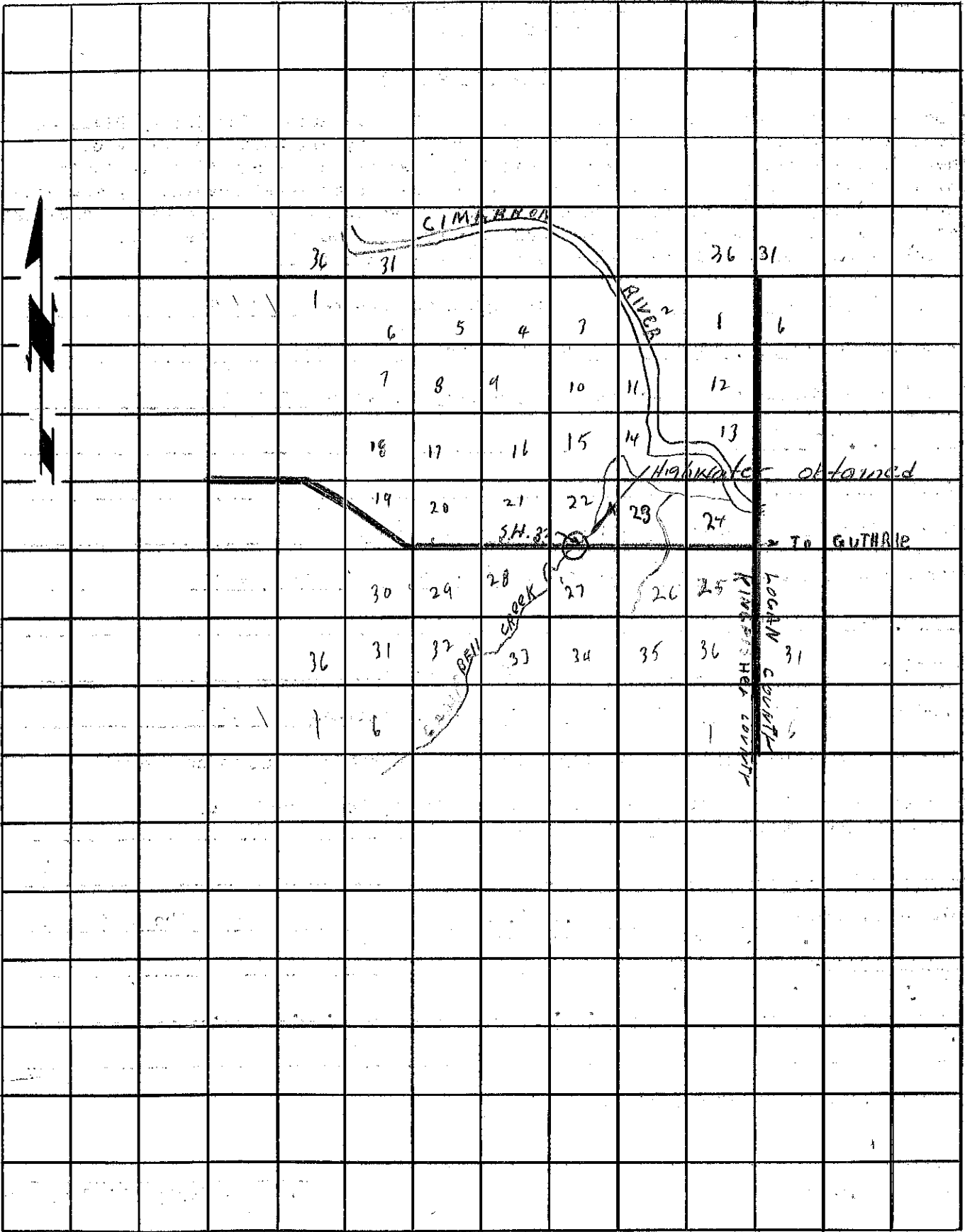
R 6 W

R 5 W

R 4 W

T 17 N

T 17 N



T 16 N

T 16 N

T 15 N

T 15 N

R 6 W

R 5 W

R 4 W