

INFO IN RED OBTAINED BY VAUGHAN & CURNUTT  
SEPT. 14, 1961

RECEIVED  
OCT 11 1961  
PLANS & SURVEY  
DEPARTMENT

Plans & Survey Dept.  
Form No. 16  
Rev. July 10, 1947

STATE OF OKLAHOMA  
DEPARTMENT OF HIGHWAYS  
PLANS AND SURVEY DEPARTMENT

FLOOD INFORMATION FORM

To be used in obtaining and transmitting flood water elevations for Plans & Survey office record files. This information to be obtained by all Chiefs of Party in their vicinity in times of unusual high water, or at any time available from a reliable source. The elevations can be recorded by level reading, by measurement from bridge floor, in relation to a house, above roadbed or any other dependable, clear manner that fits the situation, the highest order possible to be used. Separate report to be made on each crossing or place obtained.

County Kingfisher Date highwater occurred SEPT. 13, 1961  
OCT. 4, 1955

Highway number County Road Name of stream OVERFLOW FROM KINGFISHER CR.

Direction and distance from nearest town, village or store 0.50 NORTH  
of POST OFFICE at Kingfisher and 0.50 miles West.

Section, Township and Range at the sec. cor. Common to sec 9-10-15-16  
T 16 N R 7 W

Description of Location SEPT. 13, 1961 - SILT MARK ON CONC.  
BLOCK MILK HSE. 500' W. OF N.E.S.E.

Method obtained V. LEVEL  
SEPT. 13, 1961 = 1044.9  
Elevation 1042.63 Source of levels USCE & GS

Was highwater mark obtained from actual water, drift, local resident, U. S. Engineers, etc? WELL DEFINED SILT MARKS.

Explanatory Remarks obtained by G.H. STOUT, E.W.N. McLaughlin  
Oct. 4, 1955, from well defined drift.  
Water 3' deep at this sec. corner.

Location to be shown on back of this sheet as a check.

Field Note: To be sent to Engr. of Plans & Survey (1 copy).  
Office Note: To be filed in Flood Information by Counties.

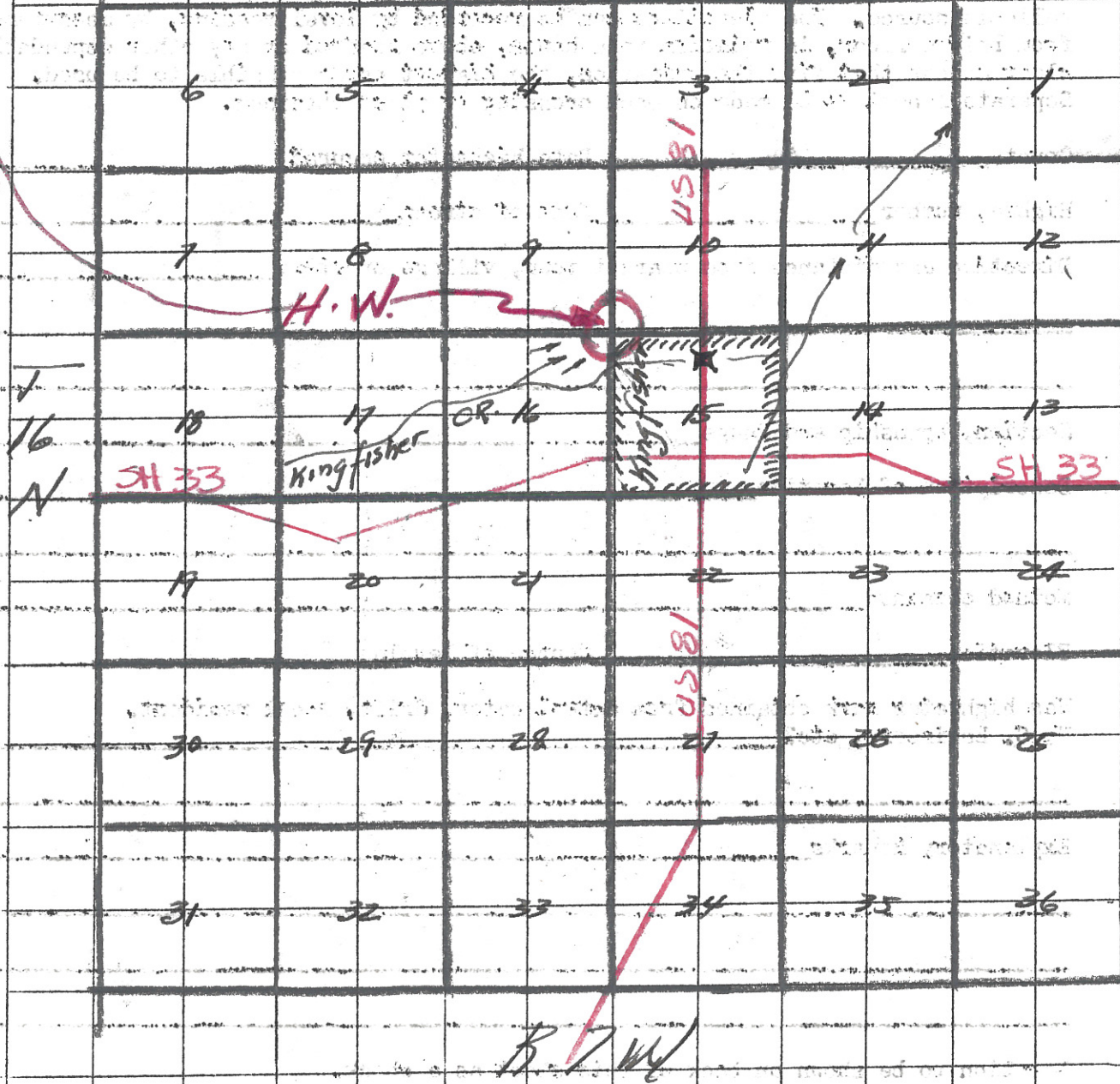
W.N. McLaughlin  
Chief of Party  
10-10-55  
Date

SEPT. 1961 H.W. OBTAINED BY VAUGHAN & CURNUTT 9/14/61

Location No. 6

SEPT. 13, 1961 H.W. ELEV. 1044.9  
OCT. 4, 1955 H.W. ELEV. 1042.63

B 7 W



T  
16  
N