



LOOKING EAST ON SH 11 IN CITY OF BLACKWELL, KAY  
COUNTY. STREET INTERSECTION IN PICTURE IS EAST  
BLACKWELL AVENUE AND SOUTH "F" STREET.  
NOTE: CHICKASKIA RIVER BRIDGE.

WATER WAS ON CENTER LINE OF STREET APPROX. 100' WEST  
OF INTERSECTION AT STA. 1+75.0, FAP 62(A). FLOOD  
WATER HAD BEGUN TO RESIDE AND WAS APPROX. 1.0 FEET  
BELOW MAXIMUM. PICTURE WAS TAKEN AT 1:30 PM NOV. 17,  
1964. HIGHWATER VIEWED BY G. H. STOUT, O.C. CURNUTT,  
AND R.C. POAGE. GENTLEMAN IN PICTURE IS G.H. STOUT,  
SURVEY ENGINEER.

FILE: KAY COUNTY FLOOD FILE



THIS VIEW LOOKING EAST ON FAS ROUTE 3109 TOWARD BRAMAN FROM TOP OF GRADE SEPARATION STRUCTURE OVER I-35 OVERLOOKING DRY CREEK. NOTE SILT ON PAVEMENT. WATER HAD RESIDED APPROX. 2.5' FROM MAXIMUM - PICTURE TAKEN APPROX. 2:50 PM.

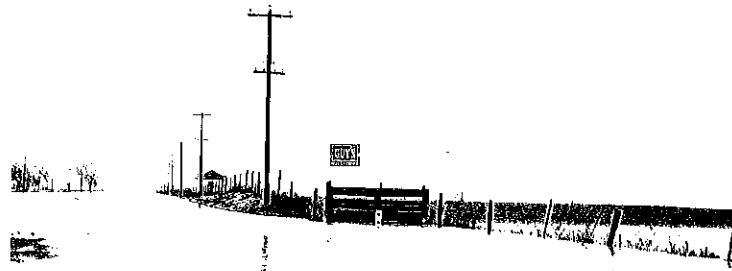


THIS VIEW LOOKING NORTH 45° E± FROM RAMP IN S.E. QUADRANT OF INTERCHANGE.

THESE PICTURES WERE TAKEN AT THE BRAMAN INTERCHANGE OF I-35 & FAS ROUTE 3109 APPROX. 0.75 MILE WEST OF BRAMAN, KAY, COUNTY. FLOOD OCCURRED ON NOVEMBER 17, 1964. PICTURES WERE TAKEN APPROX. 2:50 PM 11/17/64. FLOODING WAS CAUSED BY DRY CREEK OVERFLOW. ALL FOUR QUADRANTS OF INTERCHANGE WERE PARTIALLY INUNDATED. HIGHWATER VIEWED BY G.H. STOUT, O.C. CURNUTT AND R.C. POAGE.

INTERCHANGE WAS CONSTRUCTED AS 1456(4) & (5) INTERSECTION STATION 715+30.72.

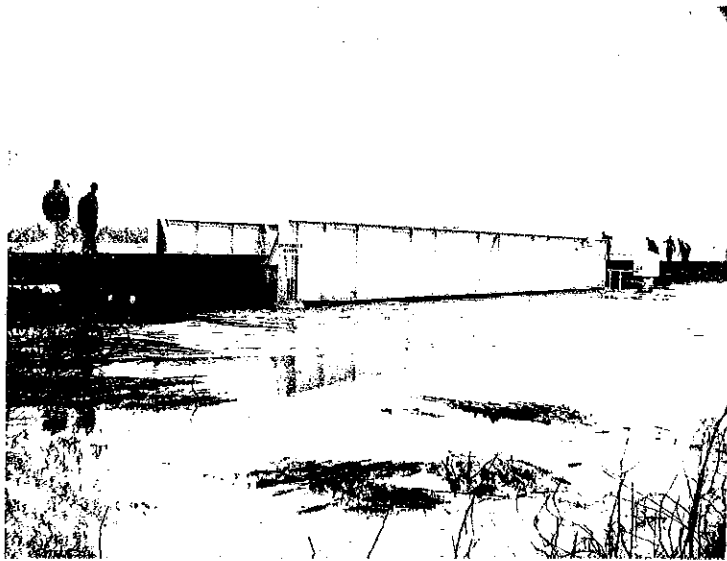
FILE: SWO 2154(1)  
KAY COUNTY FLOOD FILE



LOOKING EAST ON US 60 APPROX. 2.0 MI. E. OF TONKAWA, KAY COUNTY. HIGHWATER IS FROM CHICKASKIA RIVER OVERFLOW. THESE SCENES ARE BOTH TAKEN FROM APPROX. 800' EAST OF CHICKASKIA RIVER BRIDGE. NOTE R/W JOG IN LT. PICTURE ON RT. THIS IS END OF FAP 287(A) STATION 74+52. HIGHWATER WAS ON CENTER LINE PAVEMENT TO APPROX. 74+00.

EMPLOYEES OF THE CITY OF TONKAWA WATER DEPARTMENT, WHO WERE AT THE SCENE, REPORTED THAT WATER HAD NOT REACHED ITS PEAK AT THE TIME PICTURE WAS TAKEN, WHICH WAS 1:30 PM ON NOVEMBER 17, 1964. HIGHWATER VIEWED BY G. H. STOUT, O.C. CURNUTT AND R. C. POAGE.

FILE: KAY COUNTY FLOOD FILE

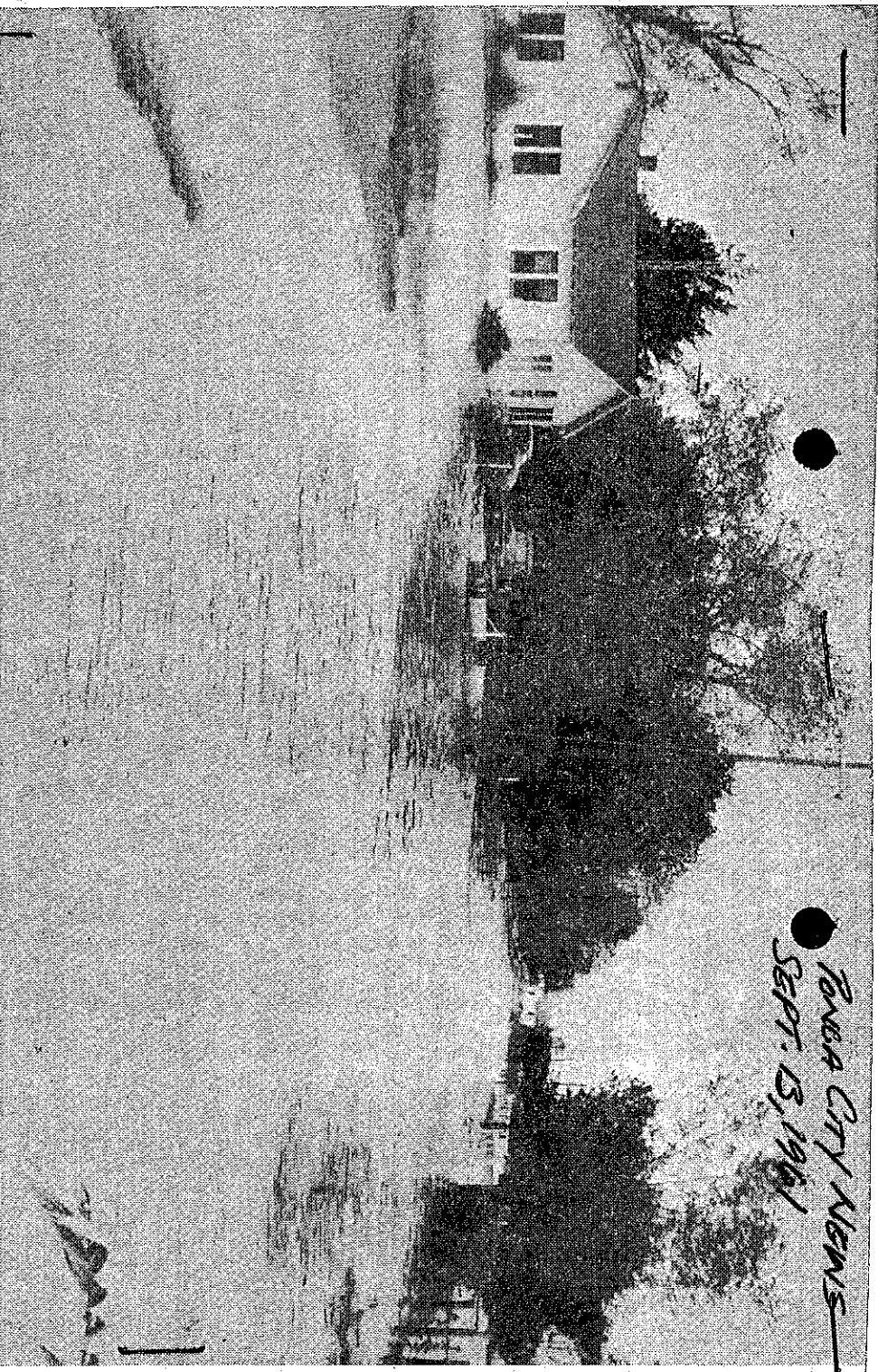


LOOKING N 65° E ± FROM NORTH D ST. AND  
S.L. & S.F. RR AT N.E. COR OF BLACKWELL,  
KAY COUNTY. WATER HAD RESIDED APPROX 1.5'  
FROM MAXIMUM HEIGHT AS REPORTED BY R.R.  
WORKMAN CLEARING DEBRIS FROM BRIDGE.  
THIS BRIDGE IS APPROX 1200' DOWNSTREAM  
FROM OUR PROPOSED FUTURE CROSSING OF  
CHICKASKI RIVER WITH SH 11 AS SURVEYED  
SWO 2299 (1). NOTE USGS GAGE ON BRIDGE  
AT RT. OF PICTURE. SEE PAGE 40 OF  
"FLOODS IN OKLAHOMA MAGNITUDE AND  
FREQUENCY", PUBLISHED BY USGS. IN  
COOPERATION WITH STATE HIGHWAY DEPT. &  
BUREAU OF PUBLIC ROADS FOR OTHER FLOOD  
INFORMATION. DATE OF THIS FLOOD AND  
PICTURE; 11/17/64, TIME 2:00 PM  
VIEWED BY G.H. STOUT, O.C. CURNUTT &  
R.C. POAGE.



LOOKING N 75° E ± FROM NORTH B STREET AND DOOLIN AVE  
AT N.E. COR. OF BLACKWELL, KAY COUNTY. HIGHWATER  
HAD RESIDED APPROX 1.5' FROM MAXIMUM. HIGHWATER  
OCCURRED 11/17/64, PICTURE TAKEN 11/17/64 APPROX. 2:15PM  
FRAME SHED IN VIEW IS 57' LT. OF STATION 2724 ± 20  
SWO 2299 (1). HIGHWATER VIEWED BY GAINES H. STOUT,  
O.C. CURNUTT, R.C. POAGE.

FILE : SWO 2299 (1)  
KAY COUNTY FLOOD FILE



POUCA CITY NEWS  
SEPT. 13, 1961

RIVERSIDE STREET in Bois d'Arc Addition lived up to its name this morning as heavy rains from the fringes of Hurricane Carla sent the creek over its banks in a flash rise. Residents said the stream

rose so swiftly they were unable to move their cars, trucks, tractors and livestock.

# Fast-Rising Flood Waters Force Some Residents From Homes in Bois d'Arc

Heavy rains falling in North Central Oklahoma overnight dumped 5.21 inches at Ponca City Airport and flooding caused the closing of several highways in the area this morning.

High winds accompanying the storm reached a velocity of 46 mph at 4 a.m., according to a report from the FAA Flight Service Station at the airport.

A few residents were forced to flee their homes in the Bois d'Arc Creek region of Ponca City early this morning.

The Arkansas River at Ponca City was rising steadily, and had reached flood stage by 9:30 a.m. The flood stage is 911.6 feet, and at 11 a.m. the river's elevation was past 914. The highest flood ever recorded was 920.45 feet.

This morning the Arkansas River was rising at the rate of a foot an hour.

Highways closed at mid-morning were S.H. 11 east of Blackwell; U.S.

177, both north and south of Blackwell; U.S. 177 south of Tonkawa; U.S. 60 west of Ponca City, and U.S. 77 north of Perry.

Flooding also caused other highways to be closed including U.S. 77, south of Ponca City to the 101 Ranch; U.S. 77 north of Newkirk, and the short cut between Ponca City and Blackwell.

### Stranded Men Rescued

Ponca City firemen rescued by boat two men who had gone to a Bois d'Arc pasture to rescue five head of cattle. They were Cecil Keen, Route 2, Newkirk, and his son Don. The cattle were believed to have been swept downstream into the Salt Fork River.

Bois d'Arc came up fast. Avery Harrel, who has lived near the creek on U.S. 60-77 for 35 years, said he awoke at 6 a.m. to see his horses knee-deep in water. Before he could dress, the horses were almost swimming. His yard was flooded, and his basement filled by water for the first time in 35 years.

The Bill Mitchell farmhouse, on the west bank of the creek, had water nearly halfway up the windows. The W. H. Gunn farmhouse had water to the windowsills.

In all, half a dozen houses were invaded by high water from the flash flooding in the Bois d'Arc community. The fire department reported that four families were forced from their homes.

### Cattle Stranded

Several automobiles, horses and cattle were stranded in the flooded area.

Boats were being used by the Ponca City Fire Department to help with the stranded stock.

Waves on Lake Ponca were reported at 2 1/4 to three feet this morning, and water was gushing over the spillway at a height of 18 inches.

Several boat docks have been ripped up, and the gate to the spillway was closed as a precaution.

At Lake Ponca Park picnic area, wooden picnic tables were washed down the creek. It was reported that water in the park had almost reached the shelterhouse.

The last report from Lake Ponca

officials stated that the lake waters were slowly falling.

The Chikaskia River at Blackwell had been rising steadily at the rate of a foot an hour. According to a report by Warren Backford, editor of the Blackwell Journal-Tribune, the river stage is expected to reach 26 to 28 feet by Thursday, which is over flood stage.

The Chikaskia at 6:30 this morning was measured at 22.75.

### Water at Fairgrounds

The folks at the Kay County Fair were having a difficult time. Water overflowed in a drainage ditch early this morning and flooded the livestock pens. A cleanup program was underway to clean the pens.

In some areas of North Central Oklahoma, the heavy rains forced schools to be closed. Among these were Kaw City, Red Rock and Braden.

FILE - FLOOD INFO

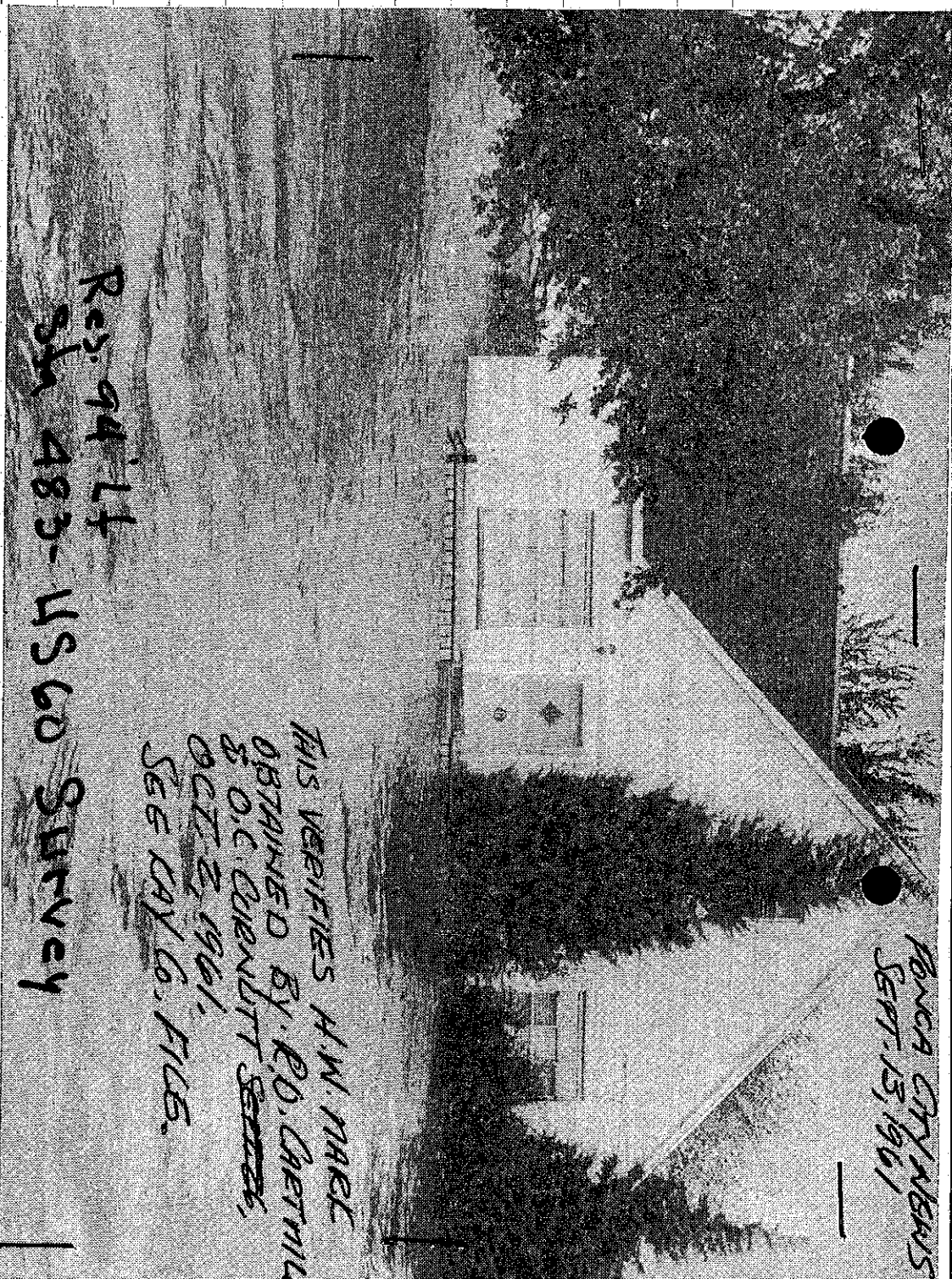
KAY Co,

SEE SWO 2325(1)

FOR ECEV.

GLEN'S TEXACO





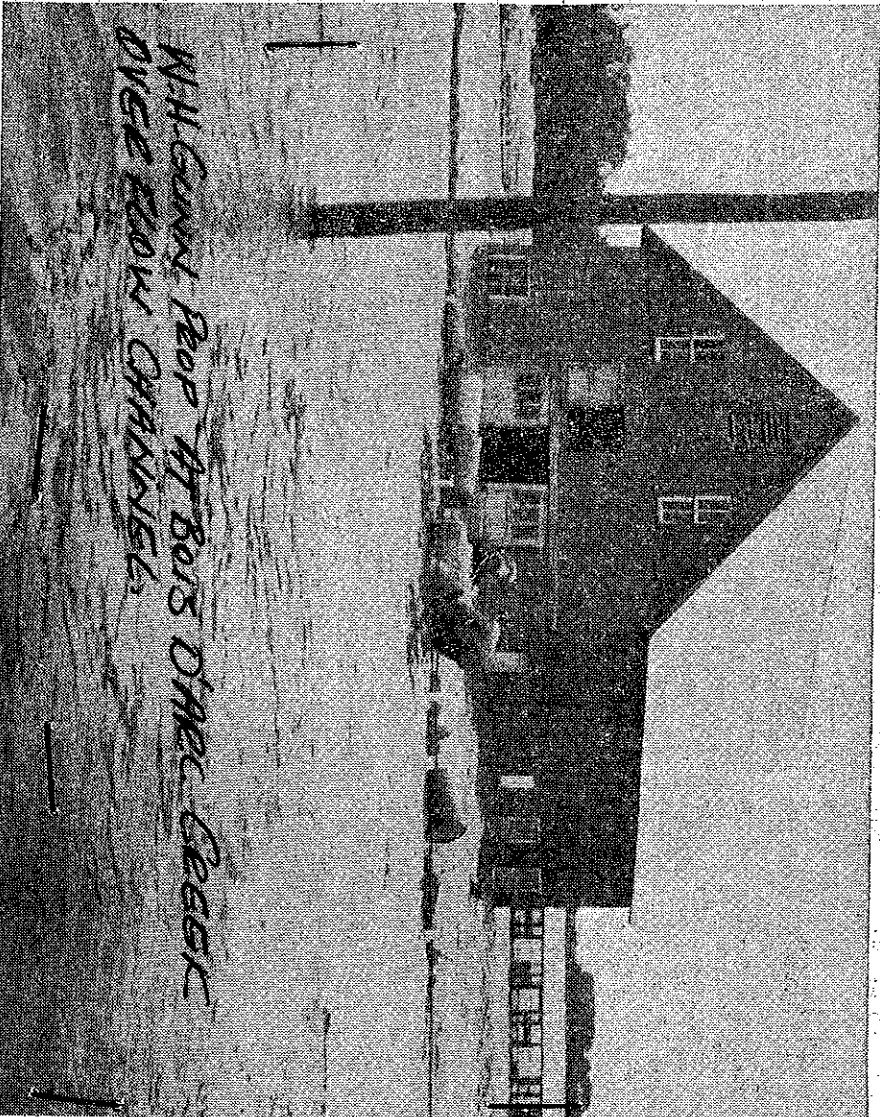
POWERS CITY NEWS  
SEPT. 15, 1961

THIS VERIFIES H.W. MARK  
OBTAINED BY R.D. CRETWILL  
801 C. QUENLITT ~~SEPT. 22,~~  
OCT. 2, 1961.  
SEE CAY CO. FILES.

REG. 94 LT  
SJA 483- US 60 SURVEY

WATER ROSE to the windowills of the W. H. Ginn farmhouse  
near Bois d'Arc Creek early this morning in the flash flooding along

U.S. 60-77, but was receding by 10 a.m. when this picture was taken.

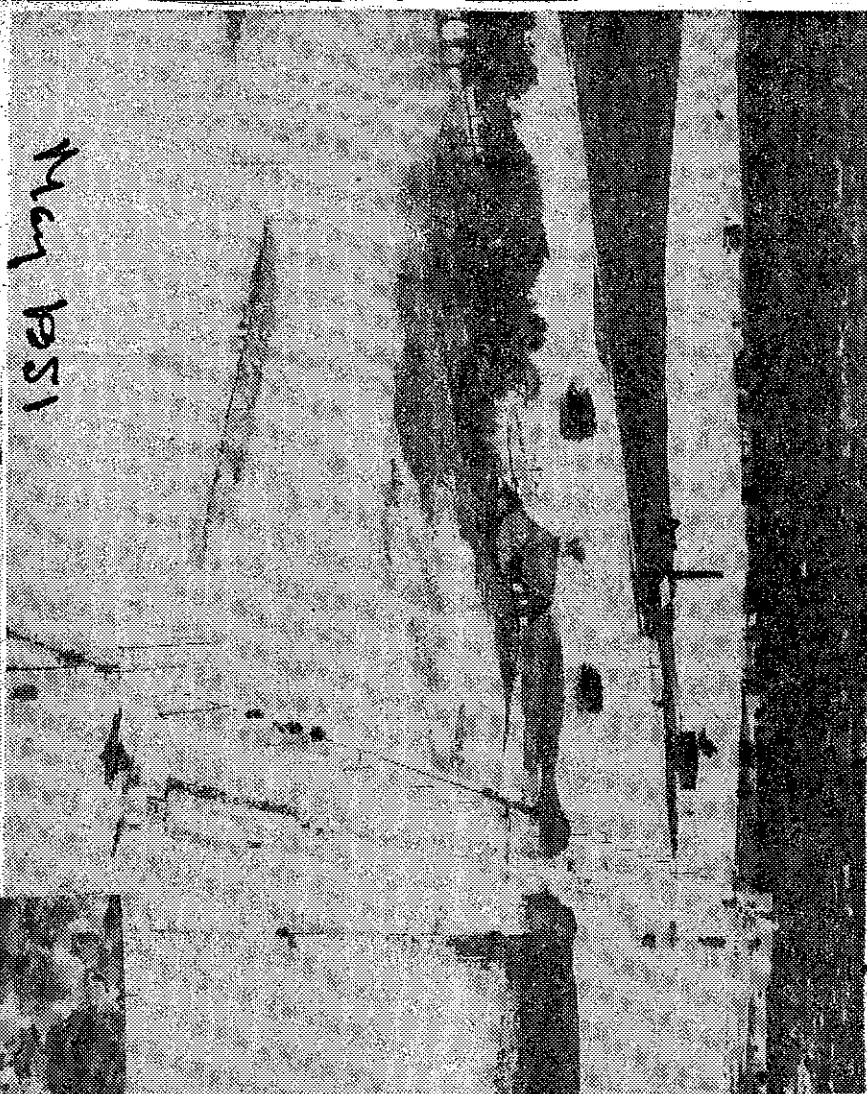


W.H. GINN'S POOP AT BOIS D'ARC CREEK  
DICE FLOW CHANNEL.

FILES: FLOOD  
RFD: Cay Co.  
FOR ELEV.  
SEE SWD: 33230

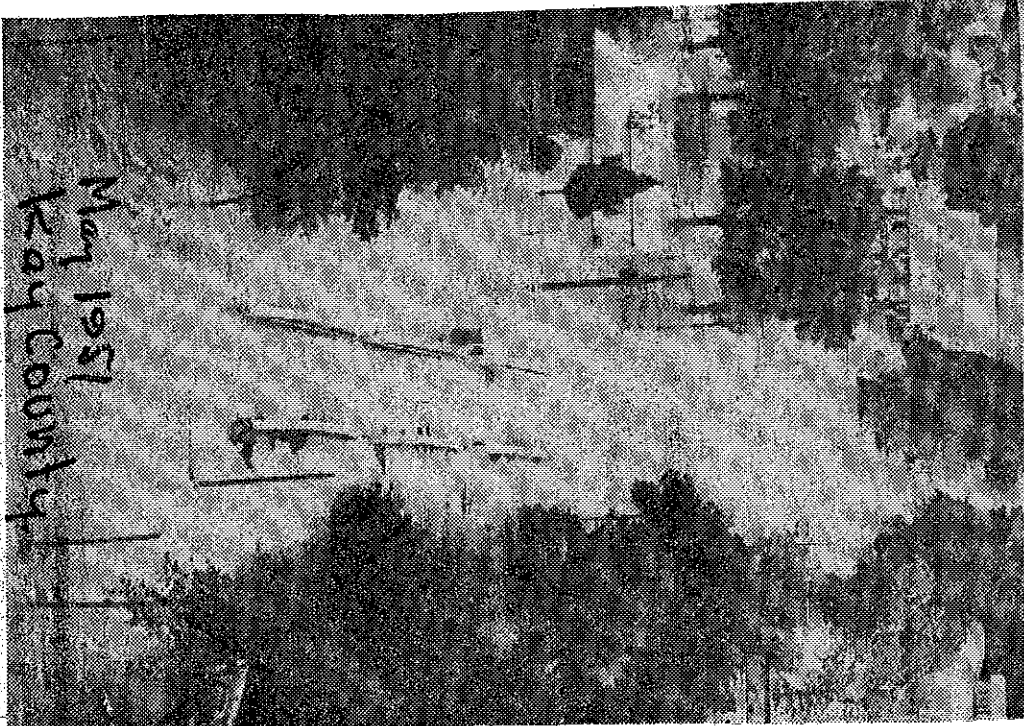
# Floodwaters Spread Out

Blackwell - Kay County



May 1951

Floodwaters Saturday looked like this east of Blackwell, where a railroad track was barely distinguishable and a farm home was surrounded. More than 100 homes were flooded in Blackwell by the surging Chikaskia river.



May 1951  
Kay County

## But Plenty's Left for Blackwell Area!

The Chikaskia river at Blackwell was falling slowly Saturday morning as the stream poured into the Salt Fork of the Arkansas south of Tonkawa. The Salt Fork was out south of Ponca City closing U. S. 77. Above is a view of the U. S. 81 bridge on the north edge of Blackwell and of the flood that caused 100 families to be evacuated. (More Photos, Page 6.)