

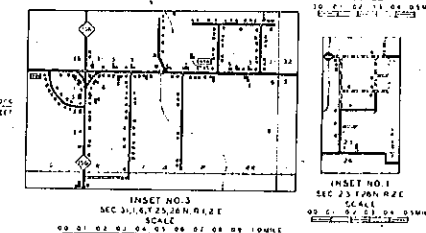
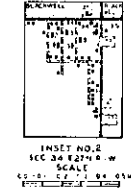
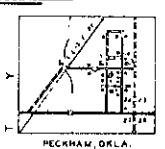
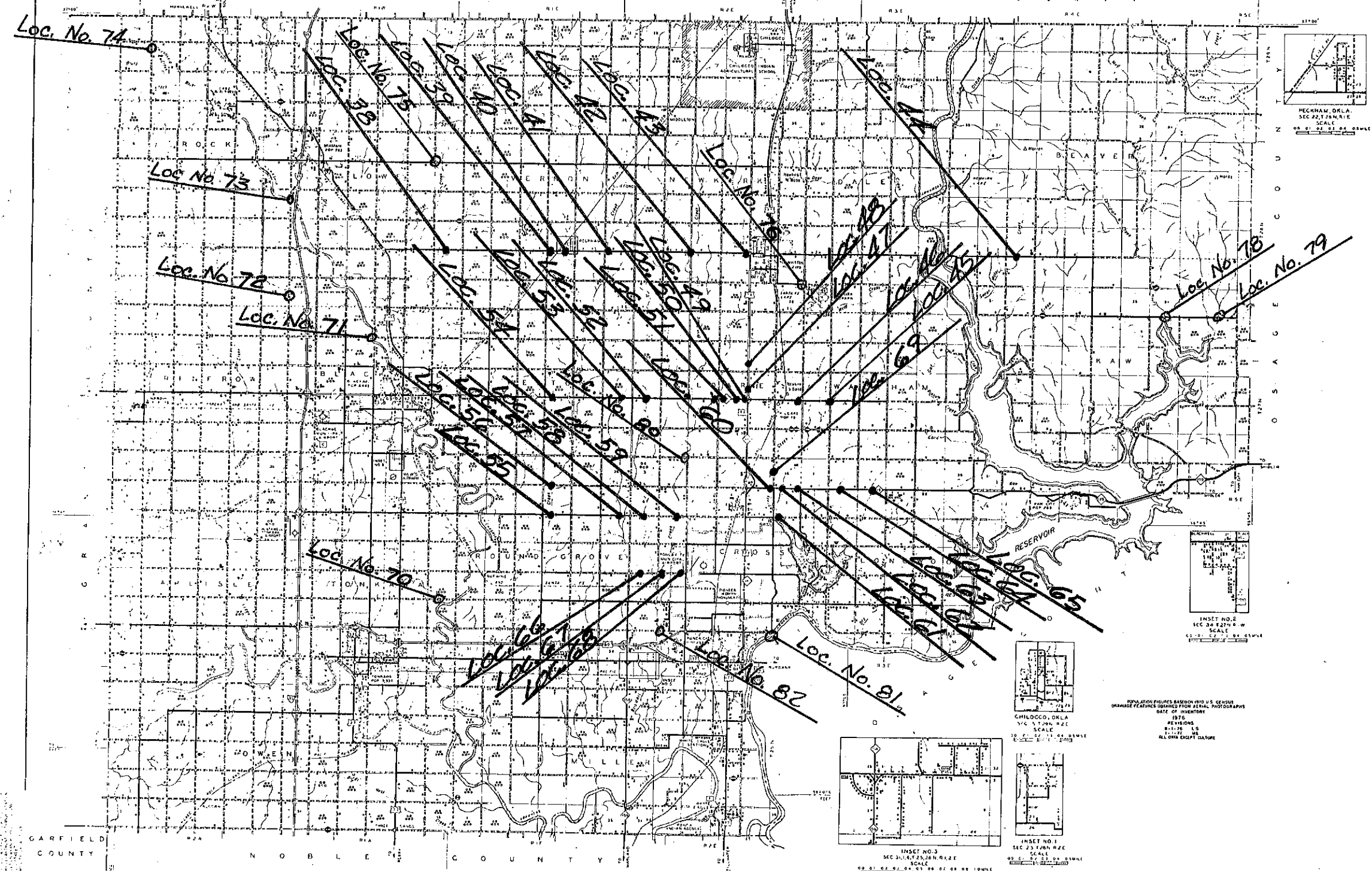
**GENERAL HIGHWAY MAP
KAY COUNTY
OKLAHOMA**

PREPARED BY THE
OKLAHOMA DEPARTMENT OF HIGHWAYS
PLANNING DIVISION
IN COOPERATION WITH THE
U.S. DEPARTMENT OF TRANSPORTATION
FEDERAL HIGHWAY ADMINISTRATION

SCALE: 1" = 1 MILE
LAMBERT CONFORMAL CONIC PROJECTION U. S. GEOLOGICAL SURVEY DATA BASED
FOOT AND BASELINES OF PLANE COORDINATE SYSTEM USING PROJECTION ZONE.

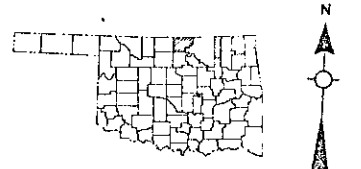
*Location No. 12 = Chickasaw River and SH 11 including overflow from US 177 east 1 mile and RE structures.

* Loc. No. 19



LEGEND

PAVED ROAD	UNPAVED ROAD	RAILROAD	WATER
...



**GENERAL HIGHWAY MAP
KAY COUNTY
OKLAHOMA**

OKLAHOMA DEPARTMENT OF TRANSPORTATION
PLANNING DIVISION
U.S. DEPARTMENT OF TRANSPORTATION
FEDERAL HIGHWAY ADMINISTRATION

ALL RIGHTS RESERVED