

SALT FORK
3. city limits Tonkawa

Plans & Survey Dept.
Form No. 16
Rev. July 10, 1947

STATE OF OKLAHOMA
DEPARTMENT OF HIGHWAYS
PLANS AND SURVEY DEPARTMENT

FLOOD INFORMATION FORM

To be used in obtaining and transmitting flood water elevations for Plans & Survey office record files. This information to be obtained by all Chiefs of Party in their vicinity in times of unusual high water, or at any time available from a reliable source. The elevations can be recorded by level reading, by measurement from bridge floor, in relation to a house, above roadbed or any other dependable, clear manner that fits the situation, the highest order possible to be used. Separate report to be made on each crossing or place obtained.

County KAY Date highwater occurred November 18, 1964

Highway number US 177 Name of stream Salt Fork of Arkansas River

Direction and distance from nearest town, village or store At South Corporate limits of Tonkawa Oklahoma.

Section, Township and Range Section 4, T-25-N, R-1-W. Kay County

Description of Location At. Salt Fork of Arkansas River South Corporate limits of Tonkawa Oklahoma on US 177.

Method obtained Y-Level

Elevation 951.97 Source of levels SWO 2214(1) FAP 887(1)S Plans

Was highwater mark obtained from actual water, drift, local resident, U. S. Engineers, etc? Actual highwater as observed on Nov. 18, 1964

SET- BM. (X) on NW corner of NW wingwall of bridge Lt. Sta. 203/40.16 Elev. 961.28
Highwater at US gaging station as recorded by Mr. Roy Lorg of Tonkawa City water dept. between 1:00 AM and 3:00 AM 11/18/64- Elev.- 952.12,

Explanatory Remarks Highwater on Salt Fork of Arkansas River 11/18/64, actual HW ~~XXXX~~ as observed by me. 8:00 AM Nov. 18, 1964

As recorded by Mr. Roy Lorg of Tonkawa City water dept. river crested between 1:00 and 3:00 AM on Nov. 18, 1964 at 21.90 feet. Elevation of Gaging Station 930.22 Ft. Highwater Elev. 952.12 Ft.

Location to be shown on back of this sheet as a check.

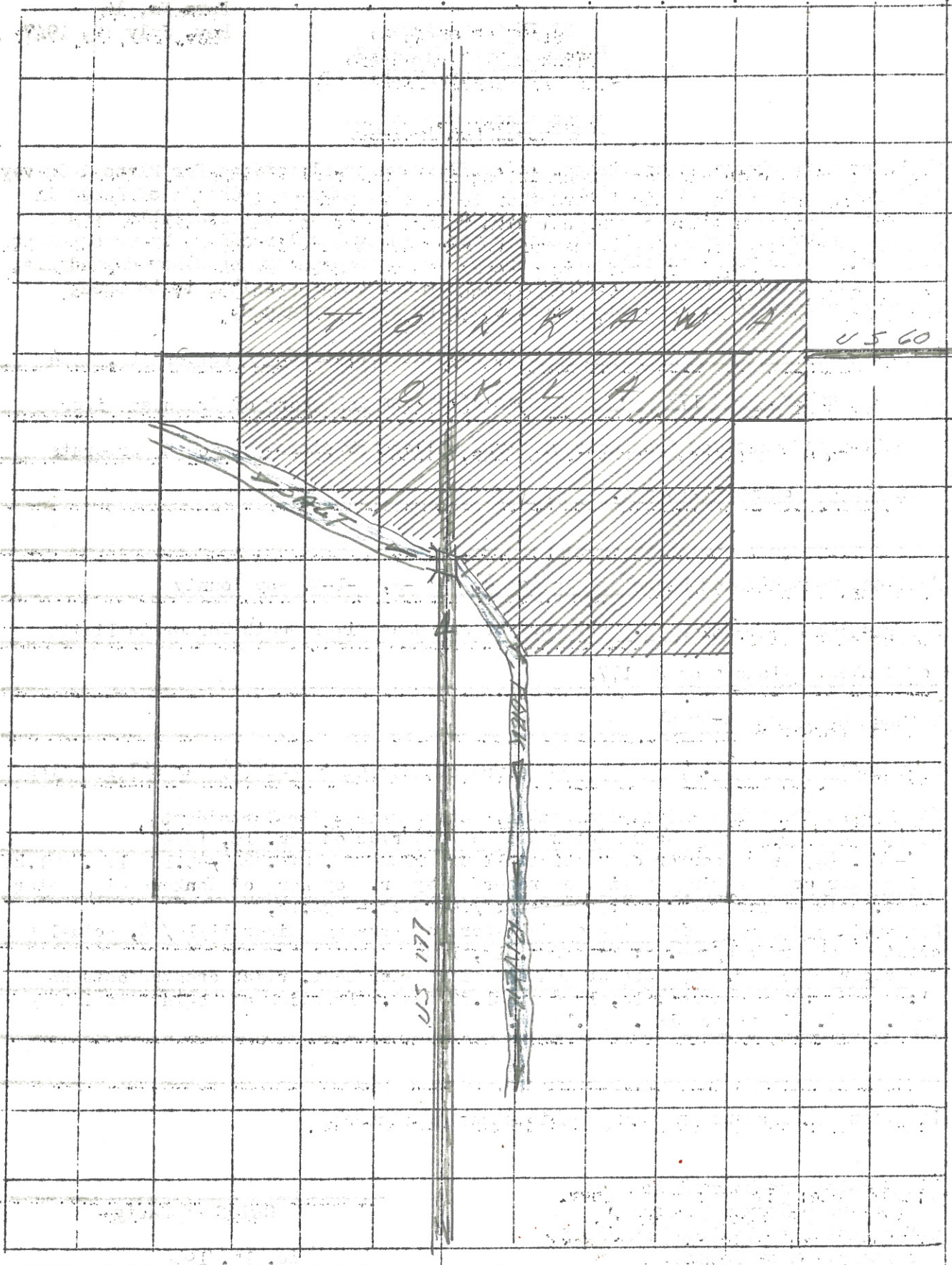
Field Note: To be sent to Engr. of Plans & Survey (1 copy).
Office Note: To be filed in Flood Information by Counties.

Chas. L. Miller
Chief of Party

Dec. 15, 1964
Date

LOCATION NO. 5A

R-1-W



T
2
5
4

