

STATE OF OKLAHOMA  
DEPARTMENT OF HIGHWAYS  
PLANS AND SURVEY DEPARTMENT

FLOOD INFORMATION FORM

To be used in obtaining and transmitting flood water elevations for Plans & Survey office record files. This information to be obtained by all Chiefs of Party in their vicinity in times of unusual high water, or at any time available from a reliable source. The elevations can be recorded by level reading, by measurement from bridge floor, in relation to a house, above roadbed or any other dependable, clear manner that fits the situation, the highest order possible to be used. Separate report to be made on each crossing or place obtained.

County Key Date highwater occurred October 4 - 5, 1959

Highway number US 177 Name of stream Salt Fork of Arkansas River

Direction and distance from nearest town, village or store Approx. 2 miles south of Tonkawa on US 177

Section, Township and Range Section 16, T25N, R1W

Description of Location Approx 2 miles south of the south edge of Tonkawa near the center of Section 16, where US 177 Highway rises above the flat land of the river

Method obtained Fennel Level

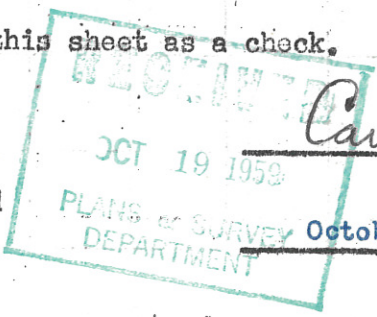
Elevation Down 7.5 ft. from top of Large Steel Corner Post on the  $\frac{1}{4}$  Section Line on the west side of US 177. Also drove a R.R. Spike in center of US 177 approx. 50 ft. south of  $\frac{1}{4}$  line fence on Highwater mark showing.

Was highwater mark obtained from actual water, drift, local resident, U. S. Engineers, etc? Water Marks and drift, Water was approx 1 ft. below high water when we arrived.

Explanatory Remarks Due to high water we were unable to obtain highwater from bridge. Local residents said this highwater was about the same highwater elevation that had occurred approx. 3 times in the last few years. This was the first time they could remember that it had occurred in the fall of the year though.

Location to be shown on back of this sheet as a check.

Field Note: To be sent to Engr. of Plans & Survey (1 copy).  
Office Note: To be filed in Flood Information by Counties.



Carroll D. Son  
Chief of Party

October 5, 1959  
Date



TO  
LARMONT

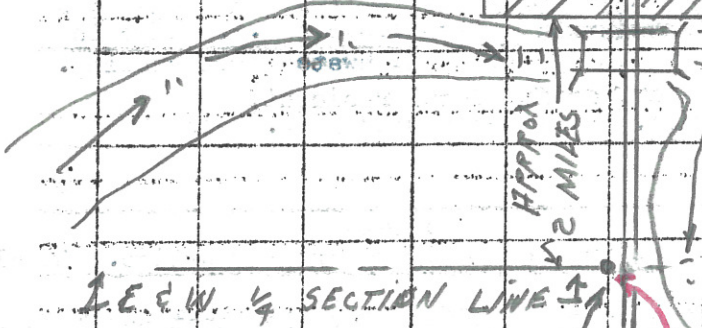
U.S. 607



TONKAWA

U.S. 607

TO  
PONCA  
CITY



HIGH WATER DOWN  
7.5 FROM LARBE  
STEEL POST ON  
WEST SIDE HIGH

SPR  
FORK OF ARKANSAS RIVER

TO  
BLACKWELL

U.S. 1777

U.S. 1777

TO  
PERRY