

SURVEY DIVISION	1-10-68						
	1-11-68						
	1-5-68						
	1-8-68						
GHS	WWW	WNM	GWP	OCC	GER	SDD	

Survey Division  
Form No. 16  
Rev. Sept. 10, 1961

STATE OF OKLAHOMA  
DEPARTMENT OF HIGHWAYS  
SURVEY DIVISION

FLOOD INFORMATION FORM

*Kay Co*

To be used in obtaining and transmitting flood water elevations for Survey Division office record files. This information to be obtained by all Chiefs of Party or others in their vicinity in times of unusual high water, or at any time available from a reliable source. The elevations can be recorded by level reading, by measurement from bridge floor, in relation to a house, above roadbed or any other dependable, clear manner that fits the situation, the highest order possible to be used. Separate report to be made on each crossing or place obtained.

County KAY Date highwater occurred JULY 25, 1967

Highway number North Leg Relocation US 60 F-283(7) Name of stream Bois D' Arc Creek

Direction and distance from nearest town, village or store \_\_\_\_\_

Approx. 3/4 mile SW of Ponca City

Section, Township and Range Section 32, T-26-N, R-2-E

Description of Location Well defined water marks on piers of structures # 53 & 54 of line "B" (North leg) relocation US 60 SWO 2323(1) F-283(7)

Elevation 948.9 Ft. Source of levels From SWO 2323(1) F-283(7)

Method obtained Y- Level Date obtained Dec. 26, 1967

Did it appear to be  normal  medium  extreme  do not know

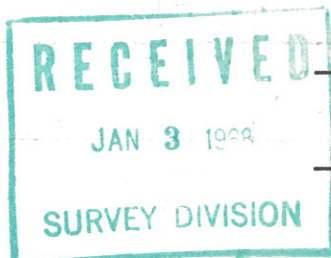
Was highwater mark obtained from actual water, drift, local resident, U. S. Engineers, etc.? Water marks on piers of structures

Explanatory Remarks Highwater was obtained from well defined water marks on piers of structures # 53 & 54 on SWO 2323(1) F-283(7) Line "B" or North leg- Relocation US 60

Location to be shown on back of this sheet as a check.

Field Note: To be sent to  
Survey Engineer

*Mc Bridge Div.  
Mc SWO 232*



*Chas. D. Hillis*

Chief of Party  
LOCATION ENGR.

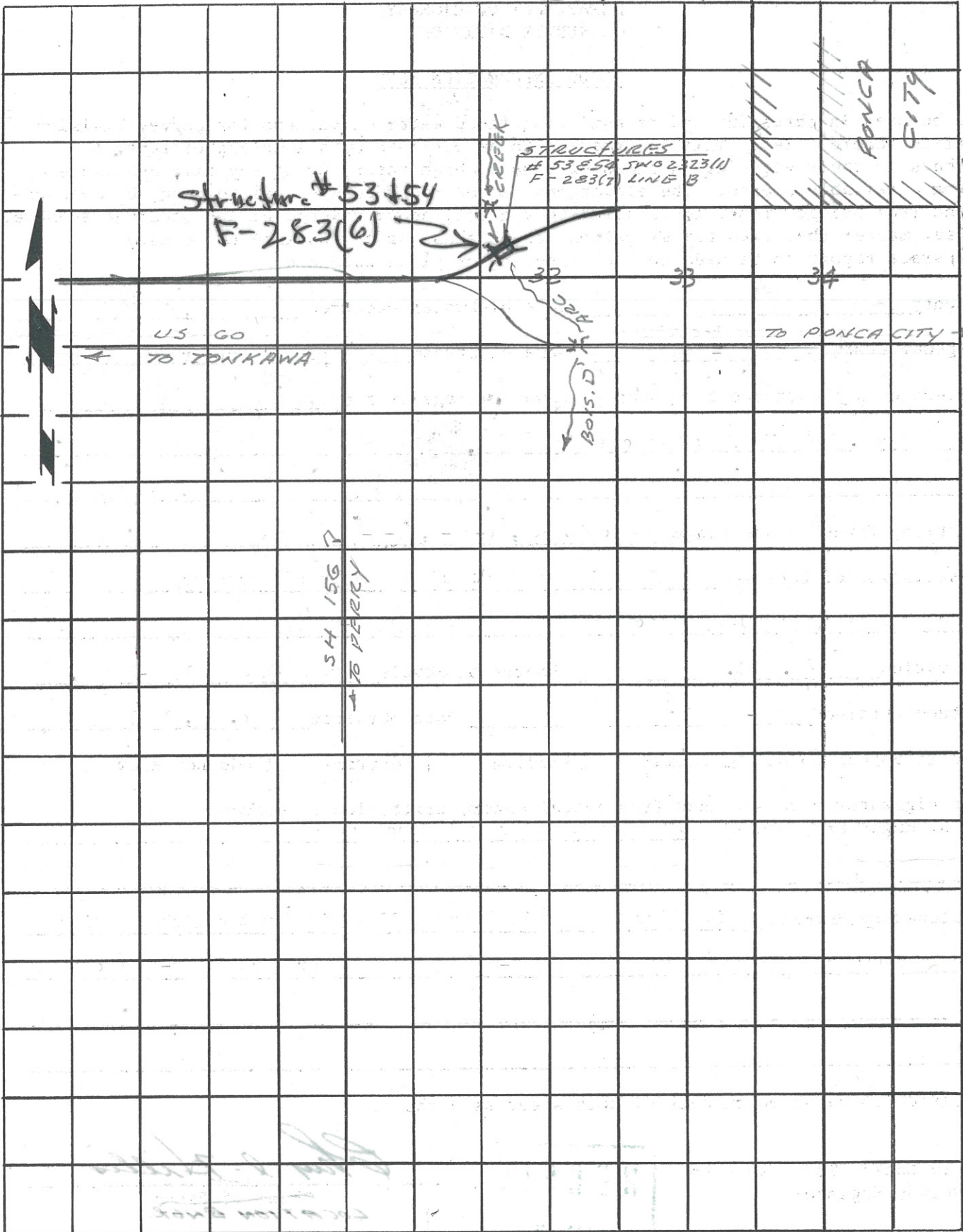
Dec. 26, 1967

Date

*LOCATION NO. 6*

R2E

R-2-E



APR 1983

APR 20 1983