

Plans & Survey Dept.
Form No. 16
Rev. July 10, 1947

STATE OF OKLAHOMA
DEPARTMENT OF HIGHWAYS
PLANS AND SURVEY DEPARTMENT

FLOOD INFORMATION FORM

To be used in obtaining and transmitting flood water elevations for Plans & Survey office record files. This information to be obtained by all Chiefs of Party in their vicinity in times of unusual high water, or at any time available from a reliable source. The elevations can be recorded by level reading, by measurement from bridge floor, in relation to a house, above roadbed or any other dependable, clear manner that fits the situation, the highest order possible to be used. Separate report to be made on each crossing or place obtained.

County KAY County Date highwater occurred November 17, 1964

Highway number US 177-F-165-1925 Name of stream None

Direction and distance from nearest town, village or store Drain 2.5 miles North and 0.5 West of Blackwell Oklahoma

Section, Township and Range Section 3, 27-N, R-1-W.

Description of Location Highwater over present US 177. at Sta. 140 of FAP 165 plan station (BM) Set. (X) on SW cor. of West Headwall culvert located at Sta. 142/00 of FAP 165-1925 plan stations. Elev.- 1007.12.

Method obtained Y-Level.

Elevation 1007.15 Source of levels FAP-F-165(4) plan Elev.

Was highwater mark obtained from actual water, drift, local resident, U. S. Engineers, etc? Water mark on center line of present US 177 as observed at location on November 17, 1964 by Me.

Explanatory Remarks Flood water from Chickaskia River extended North to sta. 140/00 of FAP 165 plan station- 1925 plans.

Location to be shown on back of this sheet as a check.

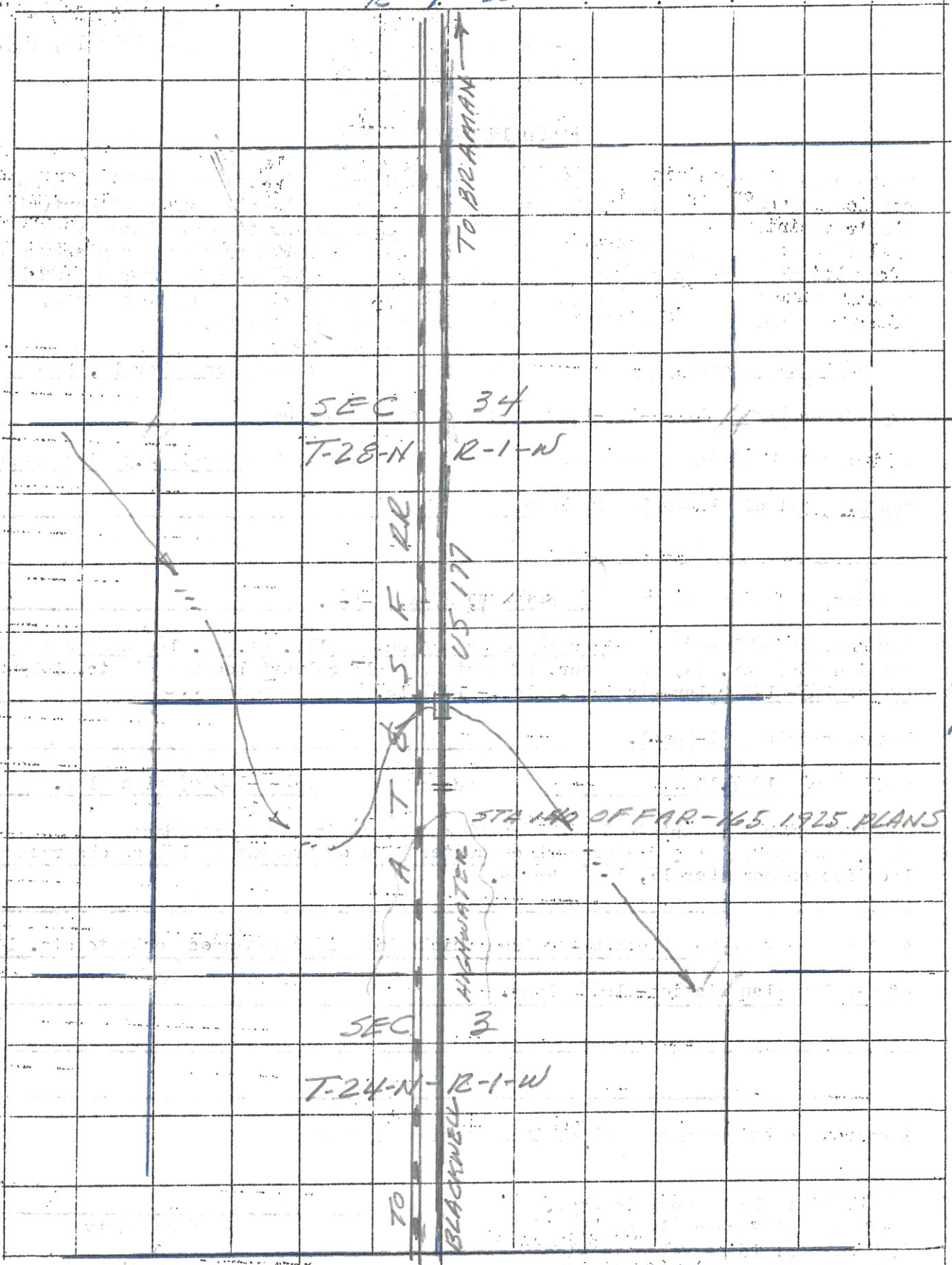
Field Note: To be sent to Engr.
of Plans & Survey (1 copy).
Office Note: To be filed in Flood
Information by Counties.

Chas. L. Hoover
Chief of Party

December 15, 1964
Date

LOCATION NO. 10

R-1-W



SEC 34
T-28-N R-1-W

S F RR
A T & S F RR

US 177

HIGHWAY

SEC 3
T-24-N R-1-W

TO

BLACKWELL

TO BRAMAN

T
28
N

STRAIGHT OF FAR-165 1925 PLANS