

STATE OF OKLAHOMA
DEPARTMENT OF HIGHWAYS
PLANS & SURVEYS DEPARTMENT

FLOOD INFORMATION FORM

To be used in obtaining and transmitting flood water elevations for Plans & Survey office record files. This information to be obtained by all Chiefs of Party in their vicinity in times of unusual high water, oratory time available from a reliable source. The elevations can be recorded by level reading, by measurement from bridge floor, in relation to a house, above roadbed or any other dependable, clear manner that fits the situation, the highest order possible to be used. Separate report to be made on each crossing or place obtained.

County KAY Date highwater occurred October 26, 1964

Highway number X~~MEXXX~~ SH 11 Name of stream Chickaskia River

Direction and distance from nearest town, village or store one mile East and 0.5 mile North of Blackwell Okla. At section corner common to sections 13, 14, 23 & 24, T-27-N, R-1-W. On S.W.O. 2299(1)

Section, Township and Range SECTION CORNER COMMON TO SECTION 13, 14, 23 & 24

T-27-N, R-1-W. Kay County

Description of Location At section corner common to section 13, 14, 23 & 24. 1

Mile East and 0.5 mile north of Blackwell. on ~~ME~~X SH 11. Back water from Chickaskia River.

Method obtained Y*LEVEL

Elevation 996.4 Source of levels S.W.O. 2299(1)

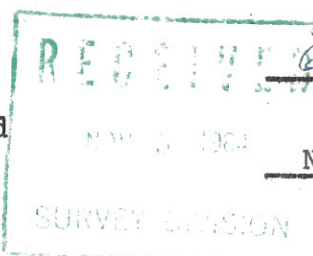
Was highwater mark obtained from actual water, drift, local resident, U. S.

Engineers, etc Actual highwater as observed by me at location on Oct. 26, 1964.

Explanatory Remarks _____

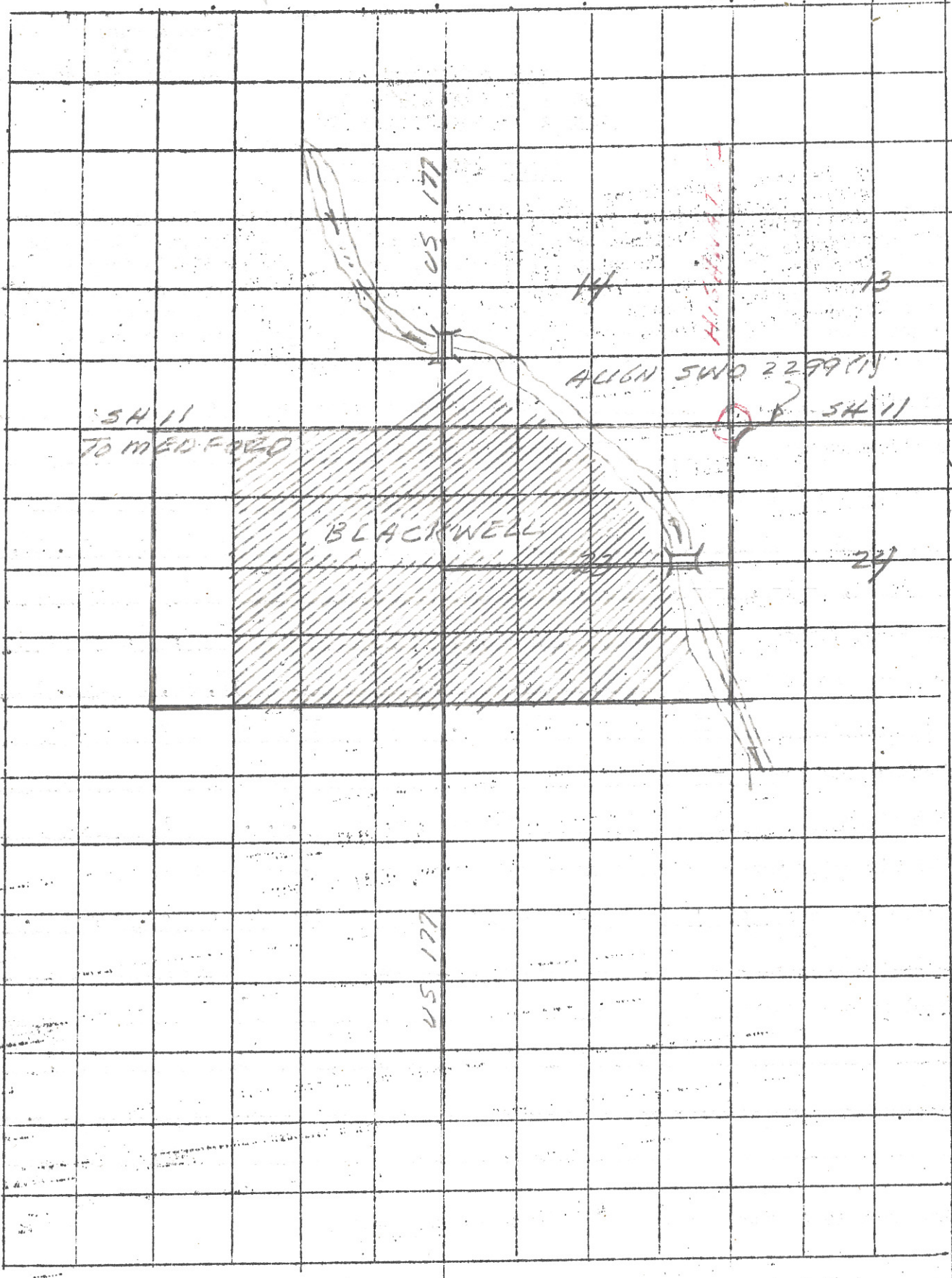
Location to be shown on back of this sheet as a check.

Field Note: To be sent to Engr. of Plans & Surveys (1 copy).
Office note: To be filed in Flood information by Counties.



Chas. L. Hester
Chief of Party
November 3, 1964
Date

Location No. 12₂



40 50
 100
 200
 300
 400
 500
 600
 700
 800
 900
 1000
 1100
 1200
 1300
 1400
 1500
 1600
 1700
 1800
 1900
 2000
 2100
 2200
 2300
 2400
 2500
 2600
 2700
 2800
 2900
 3000
 3100
 3200
 3300
 3400
 3500
 3600
 3700
 3800
 3900
 4000
 4100
 4200
 4300
 4400
 4500
 4600
 4700
 4800
 4900
 5000
 5100
 5200
 5300
 5400
 5500
 5600
 5700
 5800
 5900
 6000
 6100
 6200
 6300
 6400
 6500
 6600
 6700
 6800
 6900
 7000
 7100
 7200
 7300
 7400
 7500
 7600
 7700
 7800
 7900
 8000
 8100
 8200
 8300
 8400
 8500
 8600
 8700
 8800
 8900
 9000
 9100
 9200
 9300
 9400
 9500
 9600
 9700
 9800
 9900
 10000