

STATE OF OKLAHOMA
DEPARTMENT OF HIGHWAYS
PLANS & SURVEYS DEPARTMENT

FLOOD INFORMATION FORM

To be used in obtaining and transmitting flood water elevations for Plans & Survey office record files. This information to be obtained by all Chiefs of Party in their vicinity in times of unusual high water, oratory time available from a reliable source. The elevations can be recorded by level reading, by measurement from bridge floor, in relation to a house, above roadbed or any other dependable, clear manner that fits the situation, the highest order possible to be used. Separate report to be made on each crossing or place obtained.

County KAY Date highwater occurred October 26, 1964

Highway number SH 11 Name of stream CHICKASKIA RIVER

Direction and distance from nearest town, village or store East limits of Blackwell Oklahoma.

Section, Township and Range SECTION 23, T-27-N, R-1-W

Description of Location Northeast corner of East Abuttment of present bridge over Chickaskia River on SH 11 at East limits of Blackwell Oklahoma.

Method obtained Level Rod.

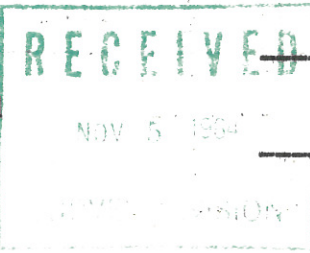
Elevation _____ Source of levels _____

Was highwater mark obtained from actual water, drift, local resident, U. S. Engineers, etc Actual Highwater as measured by me with level rod. Highwater was 5.6 feet below bridge seat at North end of East abuttment of present river bridge.

Explanatory Remarks _____

Location to be shown on back of this sheet as a check.

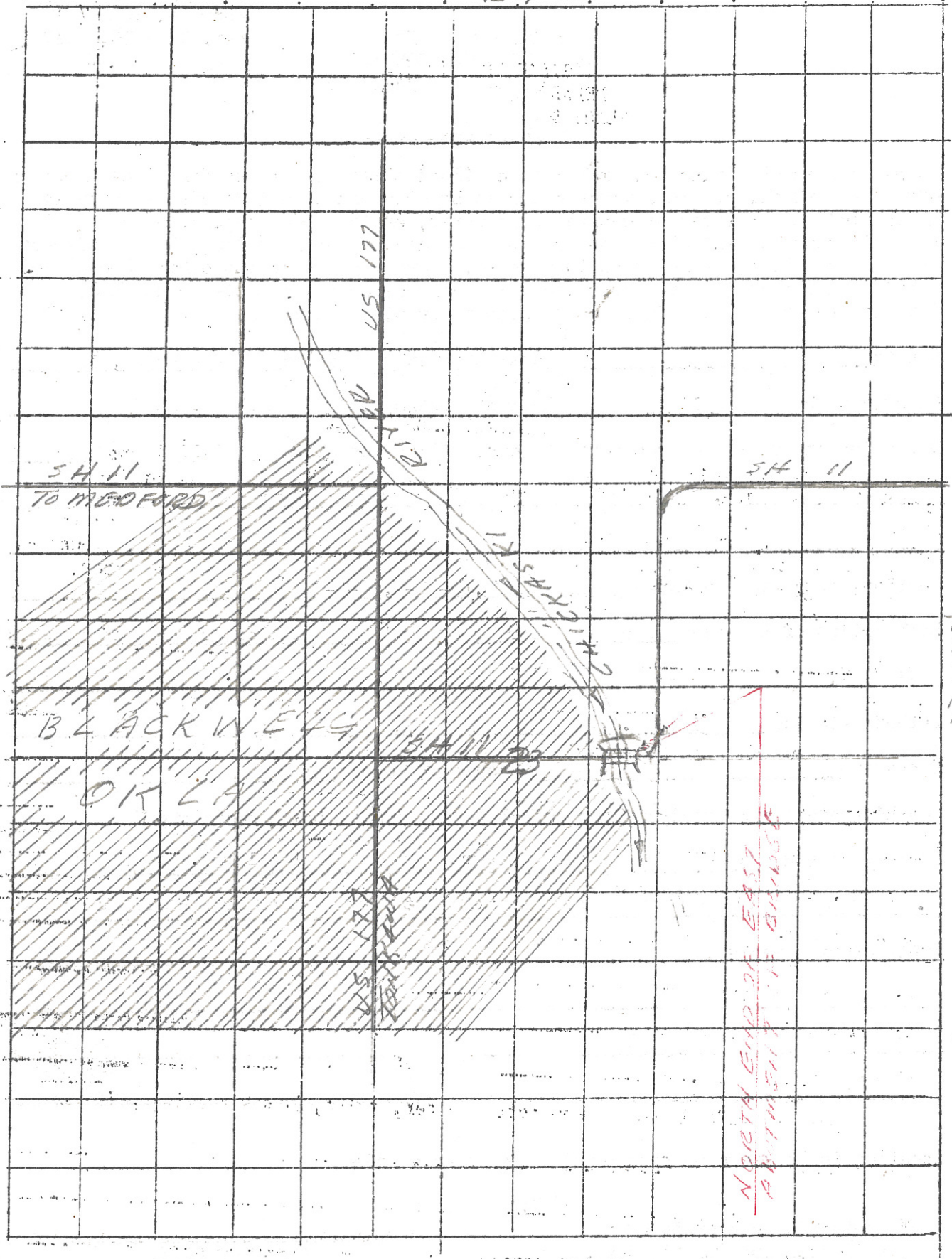
Field Note: To be sent to Engr. of Plans & Surveys (1 copy).
Office note: To be filed in Flood information by Counties.



AMIS
Chief of Party
Nov. 3, 1964
Date

Location No. 12

R-1-W



1274

NORTH END OF EAST BRIDGE