

CHICKASKIA RIVER
N BLACKWELL - 03177

Plans & Survey Dept.
Form No. 16
Rev. July 10, 1947

STATE OF OKLAHOMA
DEPARTMENT OF HIGHWAYS
PLANS AND SURVEY DEPARTMENT

FLOOD INFORMATION FORM

To be used in obtaining and transmitting flood water elevations for Plans & Survey office record files. This information to be obtained by all Chiefs of Party in their vicinity in times of unusual high water, or at any time available from a reliable source. The elevations can be recorded by level reading, by measurement from bridge floor, in relation to a house, above roadbed or any other dependable, clear manner that fits the situation, the highest order possible to be used. Separate report to be made on each crossing or place obtained.

County KAY Date highwater occurred November 17, 1964

Highway number FUTURE SIXXX
SH NO 11 Name of stream Chickaskia RIVER

Direction and distance from nearest town, village or store At East limits of
BLACKWELL and at section corner common to SECTION 13,14,23 & 24, T-27-N, R-1-W
Sta. 270/35 and Sta. 316/13.83 of S.W.O. 2299(1) survey of future SH NO 11.

Section, Township and Range Between sections 14 & 23, T-27-N, R-1-W, on sec. line

Description of Location Highwater as observed by me on center line of S.W. 2299(1)
on November 17, 1964 at 7.00 AM Sta. 270/35. (Future SH no 11)
and water marks on trees, power poles at section corner Sta. 316/13.83 of S.W. 2299(1) on November 18, 1964.

Method obtained Y-level
Station 270/35 1002.63
Elevation STA. 316/13.83 (1000.33) Source of levels S.W.O. 2299(10)

Was highwater mark obtained from actual water, drift, local resident, U. S. Engineers, etc? At sta. 270/35 actual highwater as marked by me at 7:00 AM on November 17, 1964. At. Sta. 316/13.83 from water marks on trees, power poles and water marks in yard of resident Lt. Sta. 318/00

Explanatory Remarks Highwater as recorded at gaging station located at ST & SF RR. bridge over Chickaskia River East edge of Blackwell, Elev.- 1000.49 ft. River crested at 5:30 AM on November 17, 1964 at 33.08 Ft. Gaging Station Elev. 967.41 Ft. By Corps of Engineers (1929 Level Datum)

Location to be shown on back of this sheet as a check.

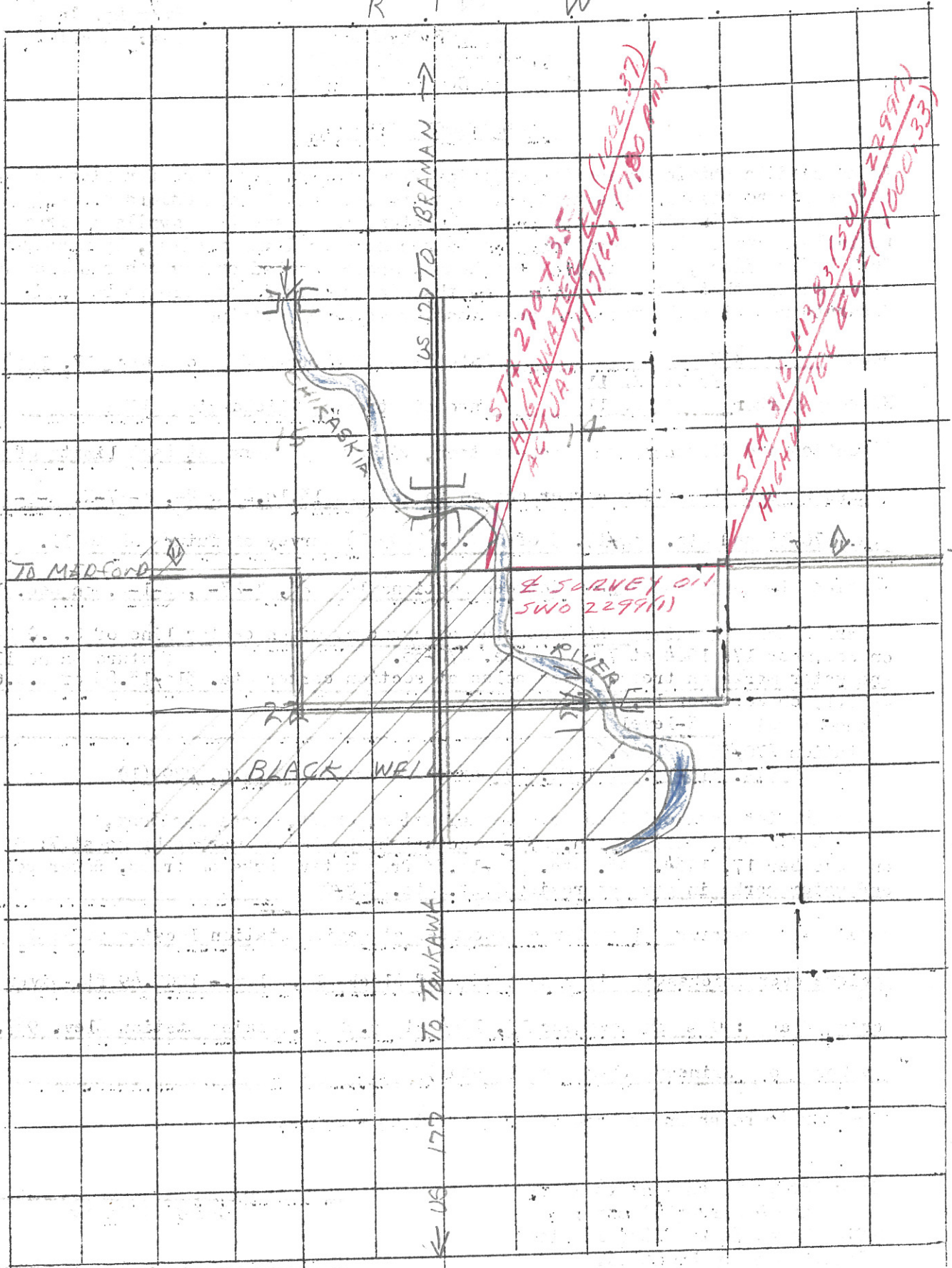
Field Note: To be sent to Engr.
of Plans & Survey (1 copy).
Office Note: To be filed in Flood
Information by Counties.

Chas. E. Blanton
Chief of Party
12/15/64
Date

Location No. 12₂

R I W

N
27
T



RM