

STATE OF OKLAHOMA
DEPARTMENT OF HIGHWAYS
PLANS AND SURVEY DEPARTMENT

FLOOD INFORMATION FORM

To be used in obtaining and transmitting flood water elevations for Plans & Survey office record files. This information to be obtained by all Chiefs of Party in their vicinity in times of unusual high water, or at any time available from a reliable source. The elevations can be recorded by level reading, by measurement from bridge floor, in relation to a house, above roadbed or any other dependable, clear manner that fits the situation, the highest order possible to be used. Separate report to be made on each crossing or place obtained.

County KAY Date highwater occurred November 18, 1964

Highway number SH No 11 Name of stream Lost Creek

Direction and distance from nearest town, village or store On SH No 11, 2.0

Miles East of intersection of US 177 and SH no 11 in Blackwell

Section, Township and Range Between sections 11 and 14, T-27-N, R-1-W

Description of Location At. lost creek bridge on SH no 11, East of Blackwell

Method obtained Y-Level

Elevation 1001.88 Source of levels S.W.O. 2299(1)

Was highwater mark obtained from actual water, drift, local resident, U. S. Engineers, etc? Water mark as observed on center line of present SH no 11

200 feet West of center line of lost creek bridge.

Explanatory Remarks A line of levels was run from BM of S.W.O. 2299(1) (X) on west end of South hdwl 13.0 rt. sta. 315+93.33 (Set BM on NW end of NW wingwall of LOST CREEK BRIDGE (ELEVATION 1003.01 Ft.))

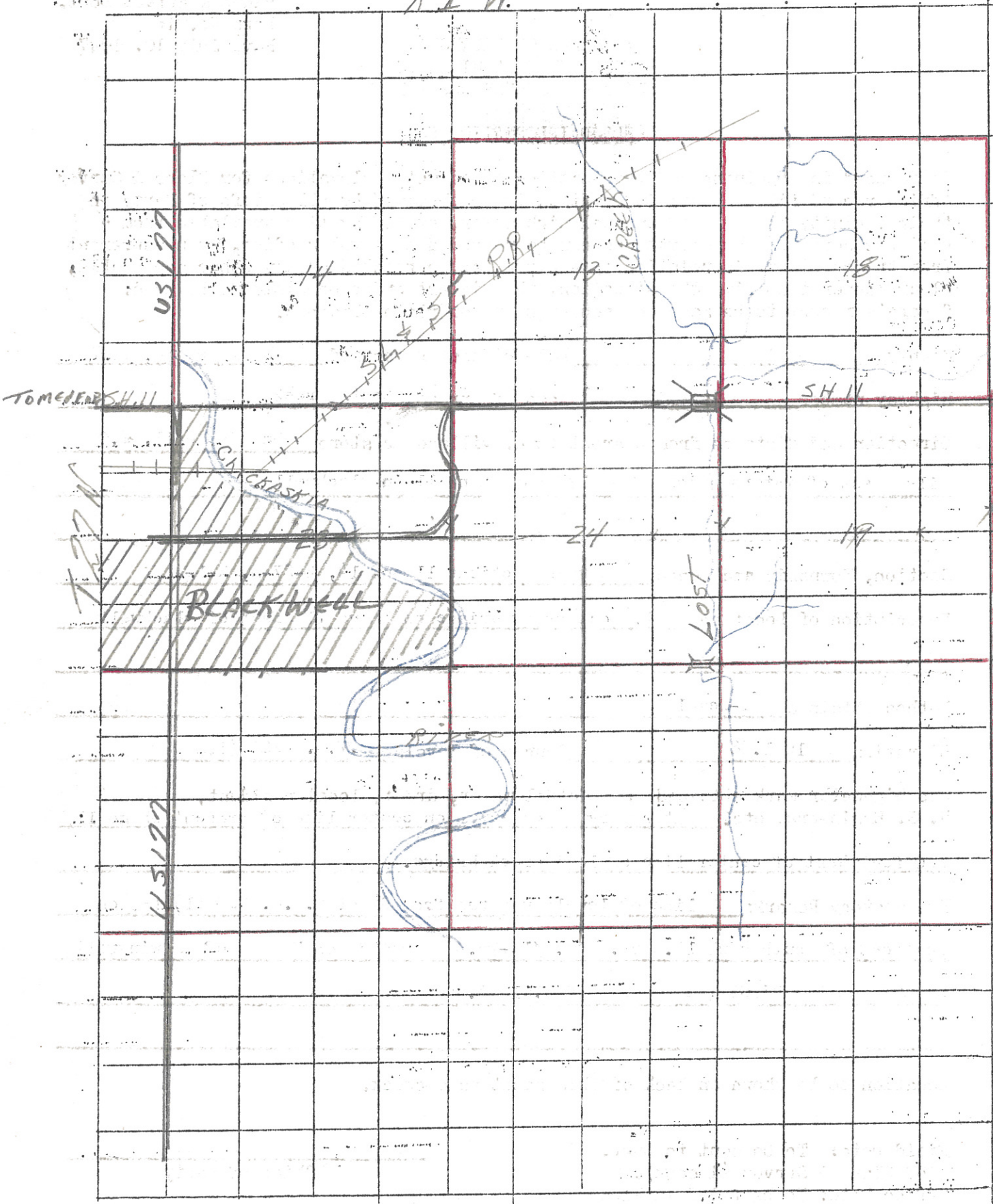
Location to be shown on back of this sheet as a check.

Field Note: To be sent to Engr.
of Plans & Survey (1 copy).
Office Note: To be filed in Flood
Information by Counties.

Chas. L. Hillis
Chief of Party

Date

RI W.



RI W.