

**RECEIVED**  
NOV 2 1981  
SURVEY DIVISION

Survey Division  
Form No. 16  
Rev. Sept. 10, 1961

STATE OF OKLAHOMA  
DEPARTMENT OF HIGHWAYS  
SURVEY DIVISION

FLOOD INFORMATION FORM

To be used in obtaining and transmitting flood water elevations for Survey Division office record files. This information to be obtained by all Chiefs of Party or others in their vicinity in times of unusual high water, or at any time available from a reliable source. The elevations can be recorded by level reading, by measurement from bridge floor, in relation to a house, above roadbed or any other dependable, clear manner that fits the situation, the highest order possible to be used. Separate report to be made on each crossing or place obtained.

County JOHNSTON Date highwater occurred OCTOBER 13, 1981

Highway number SH. 48-A Name of stream BLUE RIVER

Direction and distance from nearest town, village or store APPROX. 1 MILE NORTH OF MILBURN ON SH. 48-A AT BLUE RIVER.

Section, Township and Range SECTION 34, T-3-S, R-7-E.

Description of Location AT STATION 38+ ON RC 53 PLANS. AT BLUE RIVER BRIDGE.

Elevation 675.0 Source of levels FROM RC-53 PLANS.

Method obtained MEASURED FROM BRIDGE Date obtained OCTOBER 14, 1981

Did it appear to be  normal  medium  extreme  do not know

Was highwater mark obtained from actual water, drift, local resident, U. S. Engineers, etc.? ACTUAL WATER

Explanatory Remarks HEAVY RAIN IN AREA.

Location to be shown on back of this sheet as a check.

Field Note: To be sent to  
Survey Engineer

Oda Loy Sisk  
~~CHIEF OF PARTY~~ LOC. ENGR.

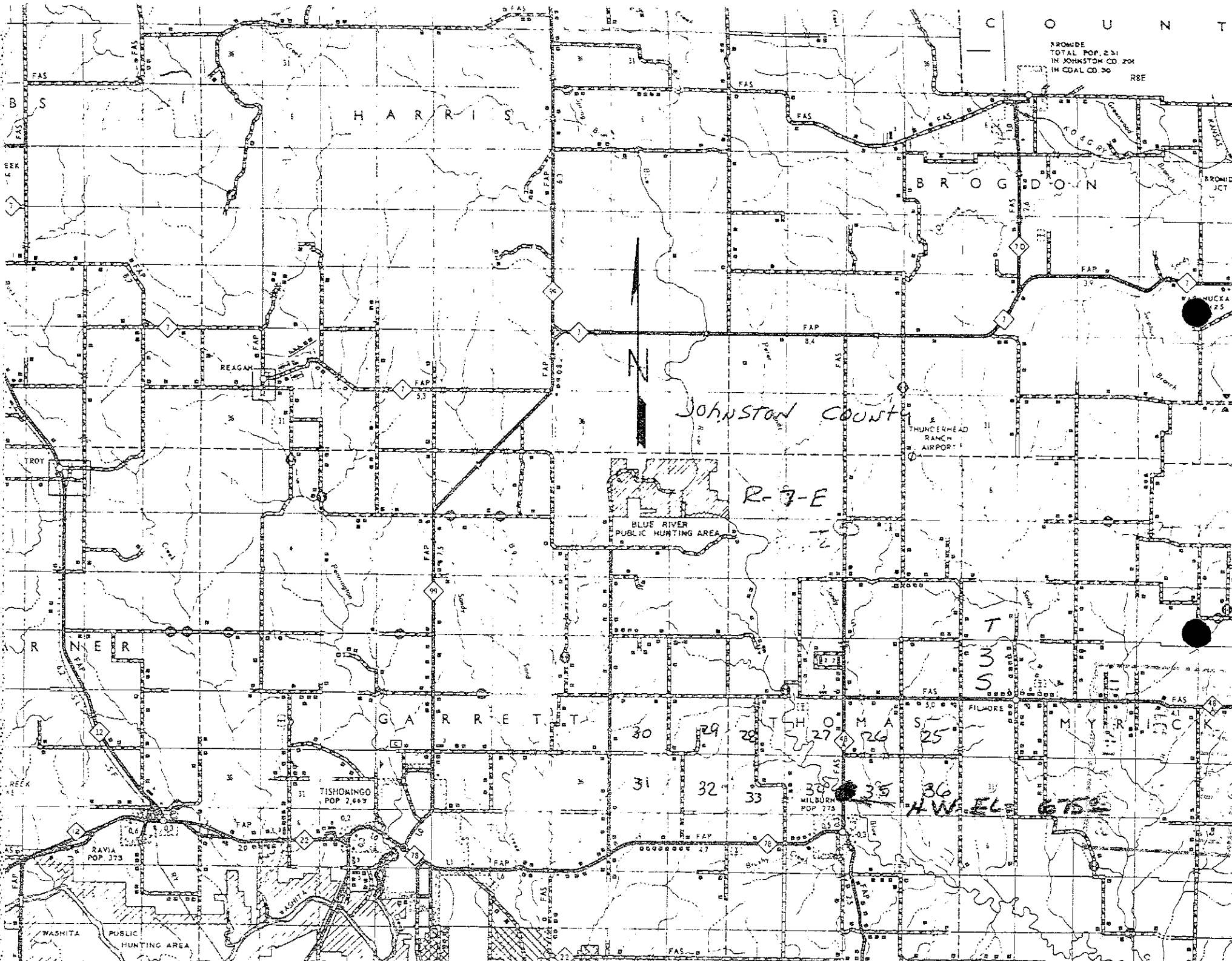
OCTOBER 22, 1981  
Date

Copy to Bridge Div. 11-A-31.

Location No. 2

FROM DE  
TOTAL POP. 2,31  
IN JOHNSTON CO. 204  
IN COAL CO. 30

R8E



Johnston County

R-7-E

BLUE RIVER  
PUBLIC HUNTING AREA

T  
3  
5

G A R R E T T

T H O M A S

M Y R I C K

TISHOMINGO  
POP. 7,667

RAVIA  
POP. 373

WILBURN  
POP. 273

H.W. EL. 675

WASHITA  
PUBLIC HUNTING AREA