

RECEIVED
 JUN 8 1967
 SURVEY DIVISION

STATE OF OKLAHOMA
 DEPARTMENT OF HIGHWAYS
 PLANS AND SURVEY DEPARTMENT

DIVISION
 Plans & Survey Dept.
 Form No. 16-67
 Rev. July 10, 1947
 OCC
 GER
 SDD
 JDW
 DP

FLOOD INFORMATION FORM

To be used in obtaining and transmitting flood water elevations for Plans & Survey office record files. This information to be obtained by all Chiefs of Party in their vicinity in times of unusual high water, or at any time available from a reliable source. The elevations can be recorded by level reading, by measurement from bridge floor, in relation to a house, above roadbed or any other dependable, clear manner that fits the situation, the highest order possible to be used. Separate report to be made on each crossing or place obtained.

County Johnston Date highwater occurred May 31, 1967

Highway number 12 Name of stream Washita River

Direction and distance from nearest town, village or store 3.5 miles Southwest of Ravia, and 2.5 miles north of Russett.

Section, Township and Range Sec. 8 T 4 S - R 5 E

Description of Location On north bank of Washita River. Approx. 1/2 mile west of present Washita River bridge, and on centerline Sta. 228+00 of FAP. F-89 (11) Plans

Method obtained X - Level

Elevation 646.0 Source of levels Mean Sea Level - USCGS

Was highwater mark obtained from actual water, drift, local resident, U. S. Engineers, etc? Information obtained from Okla. Highway Dept. Bridge

Inspector from Medill Office

Explanatory Remarks This Highwater was caused by heavy rains upstream and not by backwater

Location to be shown on back of this sheet as a check.

Field Note: To be sent to Engr. of Plans & Survey (1 copy).
 Office Note: To be filed in Flood Information by Counties.

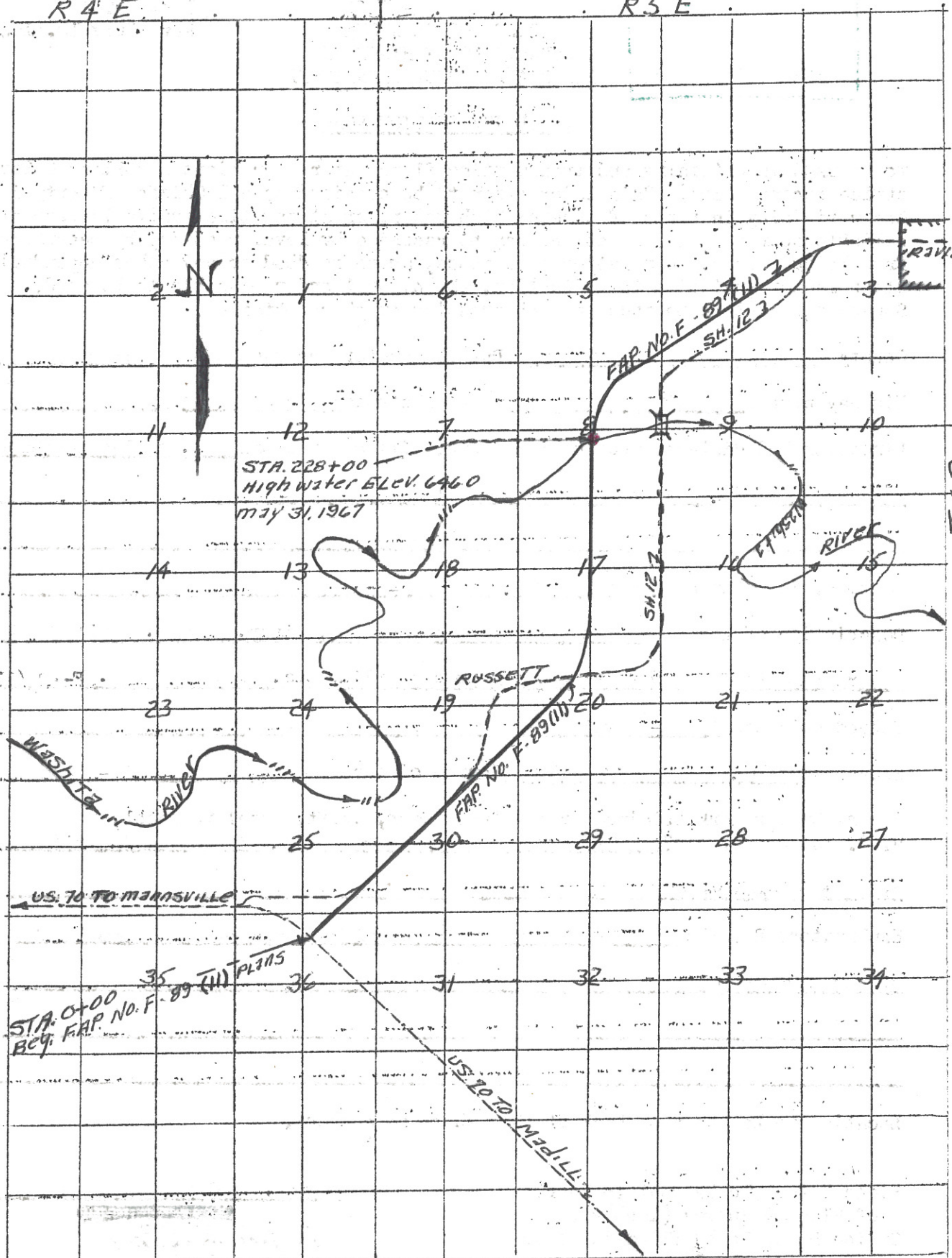
Ray N. Seeley
 Location Engineer
 BY Jack Mead Engr. I
 June 6, 1967
 Date

R4E

R5E

T4S

T4S



R4E

R5E