

RECEIVED
NOV 2 1981
SURVEY DIVISION

STATE OF OKLAHOMA
DEPARTMENT OF HIGHWAYS
SURVEY DIVISION

Survey Division
Form No. 16
Rev. Sept. 10, 1961

FLOOD INFORMATION FORM

To be used in obtaining and transmitting flood water elevations for Survey Division office record files. This information to be obtained by all Chiefs of Party or others in their vicinity in times of unusual high water, or at any time available from a reliable source. The elevations can be recorded by level reading, by measurement from bridge floor, in relation to a house, above roadbed or any other dependable, clear manner that fits the situation, the highest order possible to be used. Separate report to be made on each crossing or place obtained.

County JOHNSTON Date highwater occurred OCTOBER 13, 1981

Highway number SH. 48 Name of stream SANDY CREEK

Direction and distance from nearest town, village or store APPROX. 1/2 MILE NORTH OF WAPNUCKA, OKLA. ON SH 48.

Section, Township and Range SECTION 13 & 14, T-2-S, R-8-E.

Description of Location AT STATION 1102+70 ON FAS S-458 (7) (8) 1961 PLANS.

Elevation 605.4 Source of levels FAS S-458 (7) (8) PLANS.

Method obtained MEASURED FROM BRIDGE Date obtained OCTOBER 14, 1981

Did it appear to be normal medium extreme do not know

Was highwater mark obtained from actual water, drift, local resident, U. S. Engineers, etc.? ACTUAL WATER AND DRIFTS

Explanatory Remarks HEAVY RAIN IN AREA.

Location to be shown on back of this sheet as a check.

Field Note: To be sent to
Survey Engineer

Oda Ray Sid
CHIEF OF PARTY LOC. ENGR.

OCTOBER 22, 1981

Date

Copy to Bridge Div. 11-4-81

Location No. 7

BROMIDE
TOTAL POP 231
IN JOHNSTON CO 204
IN COAL CO 36

R8-E

B R O G D O N

H.W. EL = 605.414

WAPANUCKA
POP 425

THUNDERHEAD
RANCH
AIRPORT

Johnston
County

BLUE RIVER
PUBLIC HUNTING AREA

G A R R E T T

T H O M A S

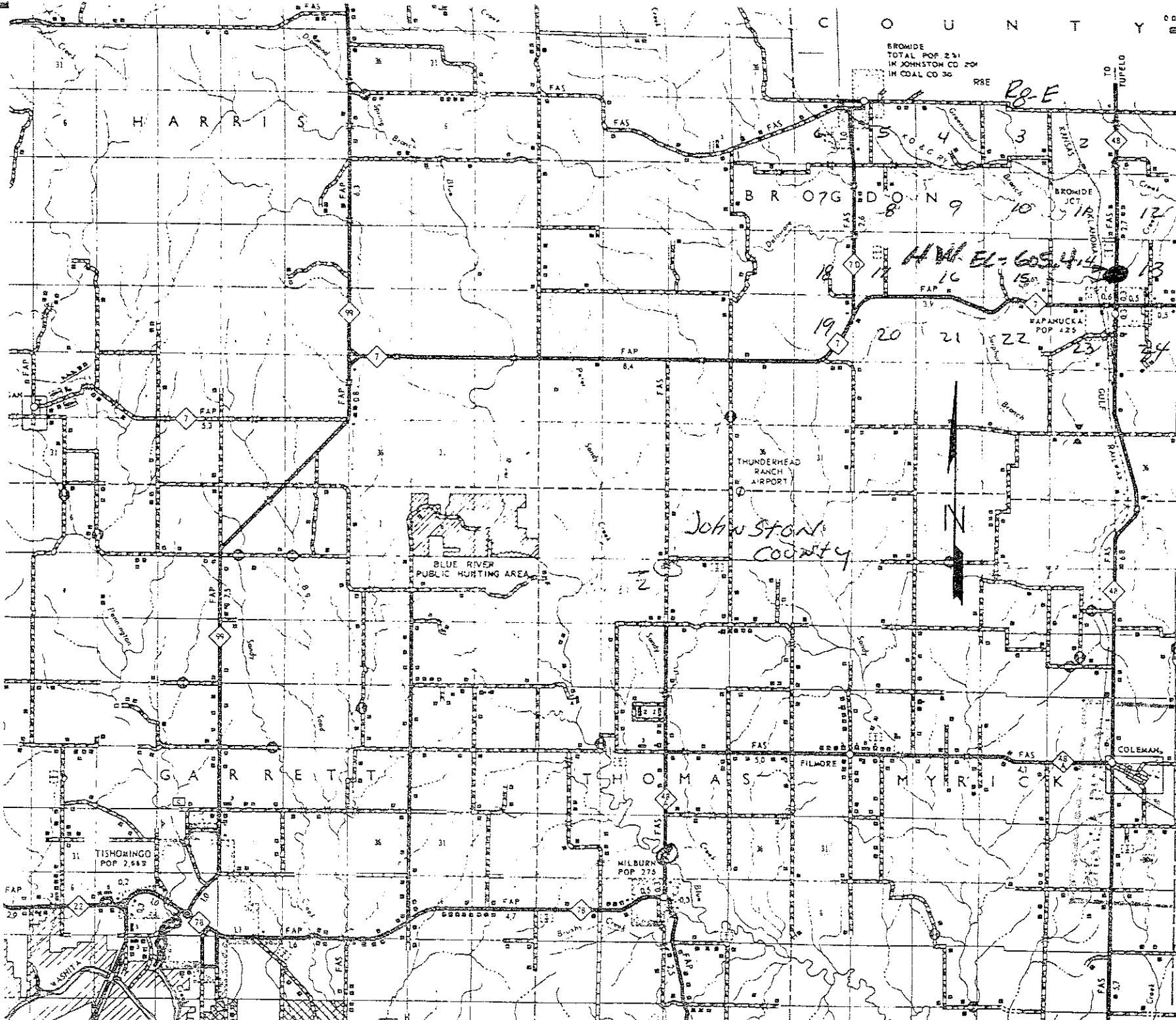
F I L M O R E

M Y R I C K

COLEMAN

TISHORINGO
POP 2,542

MILBURN
POP 275



T
S
N
T
Y
N
T
C
O
U
N
T
Y
N
O
R
T
H
C
A
R
O
L
I
N
A