

STATE OF OKLAHOMA
DEPARTMENT OF HIGHWAYS
PLANS AND SURVEY DEPARTMENT

FLOOD INFORMATION FORM

To be used in obtaining and transmitting flood water elevations for Plans & Survey office record files. This information to be obtained by all Chiefs of Party in their vicinity in times of unusual high water, or at any time available from a reliable source. The elevations can be recorded by level reading, by measurement from bridge floor, in relation to a house, above roadbed or any other dependable, clear manner that fits the situation, the highest order possible to be used. Separate report to be made on each crossing or place obtained.

County JEFFERSON Date highwater occurred May 18-19, 1951

Highway number U.S. 70 Name of stream Beaver & Cow Creek

Direction and distance from nearest town, village or store At South End of Main Street in Waurika on U.S. 70.

Section, Township and Range Sec 35 - T 45 - R 8 W.

Description of Location At Sta 408+35.08 F.A.P. 444 B Elev of. Finished Grade Br. Floor = 882.95

Method obtained Wye Level.

Elevation of the Bridge on U.S. 70 Source of levels } F.A.P. 444 B
over Beaver Creek -> Elev = 876.8
1.2' lower than the Bridge floor of the extreme East End.

Was highwater mark obtained from actual water, drift, local resident, U. S. Engineers, etc? Actual water marks on the filling station at the south end of Main St

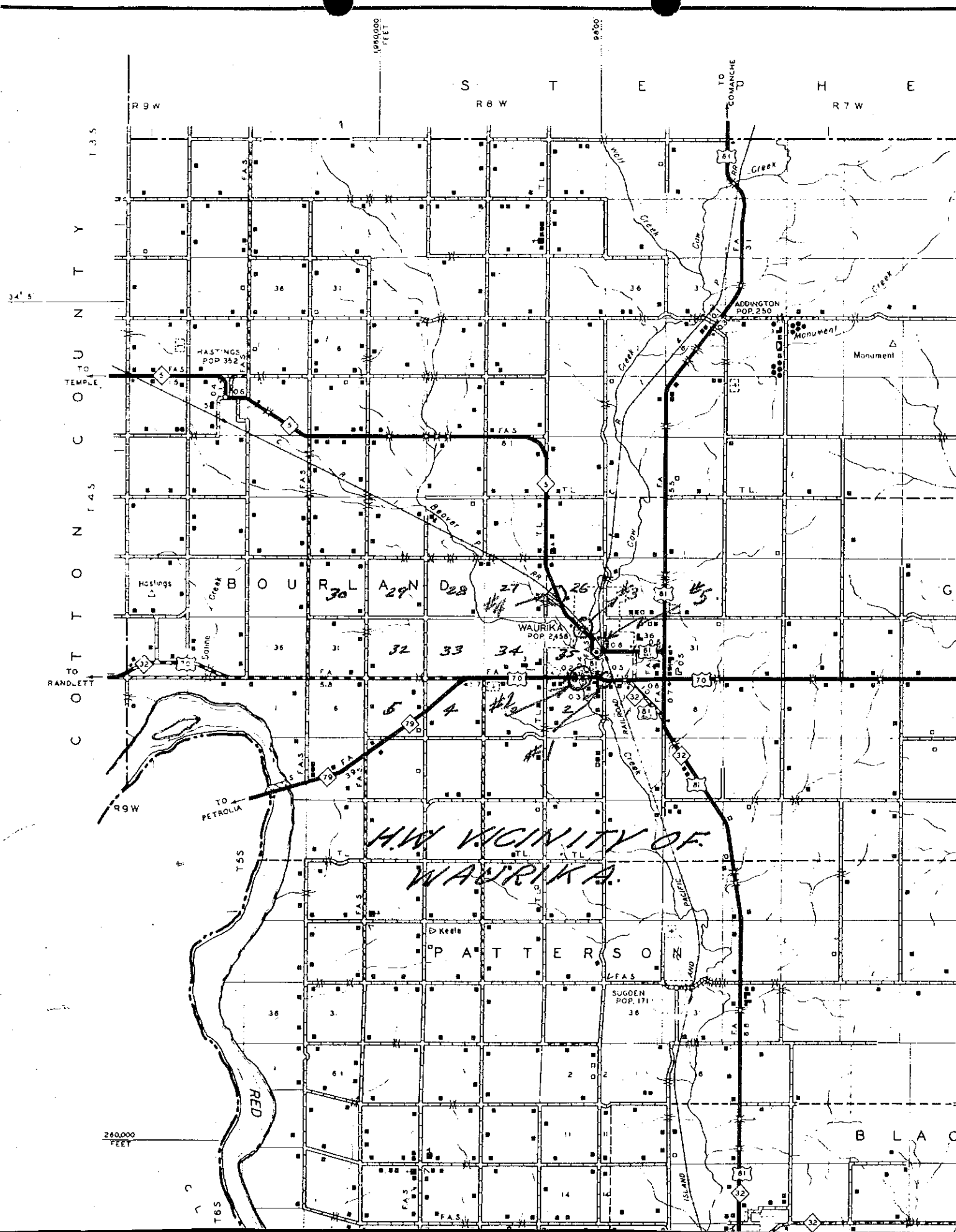
Explanatory Remarks Obtained with a wye level by A. R. Stephens and Roy Flowers

Location to be shown on back of this sheet as a check.

Field Note: To be sent to Engr. of Plans & Survey (1 copy).
Office Note: To be filed in Flood Information by Counties.

Chief of Party
Res Engineer
May 23 1951
Date

NOTE: SEE NO. 1 ATTACHED MAP FOR LOCATION



1000000 FEET

9000

S T E R 8 W R 7 W

R 9 W

T 3 S
T 4 S
T 5 S
T 6 S

TO PETROLIA

TO COMANCHE

RED RIVER

HW VICINITY OF WAURIKA.

PATTERSON

B L A C

260,000 FEET

T 6 S

32